



## CHAMPAIGN-URBANA MASS TRANSIT DISTRICT BOARD MEETING

### AGENDA

Wednesday, June 27, 2018 – 3:00 p.m.

---

Champaign City Council Chambers  
102 North Neil Street, Champaign

#### **Board of Trustees:**

Dick Barnes

Linda Bauer

Bradley Diel – Chair

Margaret Chaplan – Vice Chair

Matthew Cho

James Faron

Bruce Hannon

#### **Advisory Board:**

Lowa Mwilambwe/Brian Farber

Jacob Rajlich

	<u>Pages</u>
1. Call to Order	
2. Roll Call	
3. Approval of Agenda	
4. Public Hearing on the Budget & Appropriation Ordinance for FY2019	
5. Audience Participation	
6. Approval of Minutes	
A. Board Meeting – May 30, 2018	1-4
7. Communications	
8. Reports	
A. Managing Director	
1) Operating Notes	5-7
2) Ridership Data	8-9
3) Route Performance	10-12
4) District Operating Revenue/Expenses	13
5) Illinois Terminal Operating Revenue/Expenses	14
6) Statistical Summary	15
7) Budget Analysis	16-25
8) Accounts Payable/Check Disbursements	26-34
9) Morgan Stanley Statement	35-40
B. Board Committees	
1) Administration	
2) Facilities	
3) Service Delivery	



## CHAMPAIGN-URBANA MASS TRANSIT DISTRICT BOARD MEETING

### AGENDA

Wednesday, June 27, 2018 – 3:00 p.m.

---

Page 2

	<u>Pages</u>
9. Action Items	
A. Ordinance 2018-2 – Budget & Appropriation Ordinance for FY2019	41-47
B. Resolution 2018-2 – Ascertaining Prevailing Wages	48-56
C. Resolution 2018-3 – Division of Disability Resources and Educational Services (DRES) Intergovernmental Agreement	57-74
10. Next Meeting	
A. Regular Board of Trustees Meeting – Wednesday, July 25, 2018 – 3:00 p.m. at Champaign City Council Chambers – 102 North Neil Street, Champaign	
11. Adjournment	

*Champaign-Urbana Mass Transit District strives to provide an environment welcoming to all persons regardless of disability, race, gender, or religion. Please call Beth Brunk at 217-384-8188 to request special accommodations **at least 2 business days in advance.***



## Champaign-Urbana Mass Transit District (MTD) Board of Trustees Meeting

### MINUTES – SUBJECT TO REVIEW AND APPROVAL

DATE: Wednesday, May 30, 2018  
TIME: 3:00 p.m.  
PLACE: Champaign City Council Chambers  
102 North Neil Street, Champaign, IL

The video of this meeting can be found at:

<https://www.youtube.com/CUMTD>

#### Trustees:

Present	Absent
Dick Barnes	
Linda Bauer	
Bradley Diel (Chair)	
Margaret Chaplan (Vice-Chair)	
Matthew Cho	
James Faron	
Bruce Hannon	

#### Advisory Board:

Present	Absent
Brian Farber	
Jacob Rajlich	

#### MTD Staff:

Karl Gnadt (Managing Director), Andrew Johnson (Chief Operating Officer), Amy Snyder (Customer Service Director), Eric Broga (Maintenance Director), Jane Sullivan (Grant Manager/Sustainability Planner), Jan Kijowski (Marketing Manager), Lisa Meid (Media Manager), Jolene Gensler (Comptroller), Jennifer Bannon (Counsel), Beth Brunk (Clerk)

#### Others Present:

### MINUTES

#### 1. Call to Order

Chair Diel called the meeting to order at 3:00 p.m.

#### 2. Roll Call

A verbal roll call was taken, and a quorum was declared present.

#### 3. Approval of Agenda

Ms. Chaplan noted an error on Item #9. The next meeting date should be June 27, 2018.

**MOTION** by Ms. Chaplan to approve the agenda as amended; seconded by Ms. Bauer. Upon vote, the **MOTION CARRIED** unanimously.

#### 4. Audience Participation

None

1  
2 **5. Approval of Minutes**

3 A. *Board Meeting – April 25, 2018 – Closed Session*  
4

5 **MOTION** by Ms. Chaplan to approve the closed session minutes of the April 25, 2018 MTD Board  
6 meeting as distributed; seconded by Mr. Hannon. Upon vote, the **MOTION CARRIED** unanimously.  
7

8 B. *Board Meeting – April 25, 2018 – Open Session*  
9

10 **MOTION** by Ms. Chaplan to approve the open session minutes of the April 25, 2018 MTD Board meeting  
11 as distributed; seconded by Mr. Hannon. Upon vote, the **MOTION CARRIED** unanimously.  
12

13 **6. Communications**

14 Mr. Hannon recently received the 2018 Urbana Rotary Vocational Achievement Award.  
15

16 **7. Reports**

17 A. *Managing Director*

18 Mr. Gnadt reviewed April's statistics for the District. The kickoff for the Hydrogen Fuel Cell Project is  
19 scheduled for June 13-14. The consultants, engineers and bus manufacturer will be on-site to review the  
20 existing facilities and plan for modification needs. MTD's internal audit team for MTD2071 is working with  
21 employees to prepare for the ISO certification 9001:2015 audit in October. The legislators in Springfield  
22 seem optimistic that a state budget will be in place soon.  
23

24 The District is hiring an attorney to represent them in the Illinois Terminal Expansion Development  
25 agreements with the private developer and the City of Champaign. The Architect on the Urbana  
26 Downtown Development project continues with the pre-visualization work. MTD has released a micro-  
27 transit app RFP to be used for SafeRides, University employees on campus and direct service in southwest  
28 Champaign. Part of the RFP will be the integration with Token Transit (mobile fare app) to provide  
29 anonymous origin/destination data on passengers.  
30

31 B. *Board Committees*

32 1) **Administration** – Mr. Barnes indicated the proposed budget was included in the Board  
33 packet. Mr. Gnadt has met with all the Trustees to discuss the budget and receive input. The  
34 Budget Ordinance will be voted on at the June Board meeting.  
35

36 2) **Facilities** – No report  
37

38 3) **Service Delivery** – No report  
39

40 **8. Action Items**

41 A. Martin Hood Financial Audit Engagement Contract for FY2018

42 Ms. Gensler explained that last year, the Board approved a five-year financial audit services agreement  
43 with Martin Hood, LLC. Annually, the District is required to execute an engagement contract for the  
44 financial audit and non-audit services. This new contract with Martin Hood, LLC. for FY2018 is \$29,360 –  
45 an \$860 increase from last year.  
46

47 **MOTION** by Ms. Bauer to authorize the Managing Director to enter into an agreement with Martin Hood,  
48 LLC. for \$29,360 for FY2018 financial audit and non-audit services; seconded by Ms. Chaplan. Upon vote,  
49 the **MOTION CARRIED** unanimously.  
50

51 B. Developmental Services Center Contract

52 This is an annual contract with Developmental Services Center for ADA transportation for their client  
53 base within the District boundaries. The term of the contract is from 7/1/18 through 6/30/19.  
54

**MOTION** by Ms. Chaplan to authorize the Managing Director to enter into a contract with Developmental Services Center effective July 1, 2018 through June 30, 2019; seconded by Mr. Barnes. Upon vote, the **MOTION CARRIED** unanimously.

C. Champaign School District Unit 4 Contract

This is an annual agreement since 1977 to transport Champaign middle and high school students within MTD boundaries for the 2018-19 school year. New this year, the School District requested an expansion of service into three new neighborhoods.

**MOTION** by Ms. Chaplan to authorize the Chair of the MTD Board of Trustees to execute the Transportation Agreement between the District and Champaign Unit 4 School District in the amount of \$613,603 for the 2018-2019 school year; seconded by Ms. Bauer. Upon vote, the **MOTION CARRIED** unanimously.

D. Hydrogen Fuel Cell Project Design & Engineering Services Contract with Fiedler Group

Fiedler Group will develop modification specifications for the Maintenance Facility to accommodate hydrogen fuel cell buses. The contract with Fiedler will not exceed \$436,900. The District plans to gradually expand the hydrogen fuel cell buses in the fleet. The current estimated cost for the buses and infrastructure modifications is \$11.2 million.

**MOTION** by Mr. Hannon to authorize the Managing Director to enter into a contract with Fiedler Group in an amount not to exceed \$436,900 for professional design and engineering services with the Hydrogen Fuel Cell Project; seconded by Ms. Chaplan. Upon vote, the **MOTION CARRIED** unanimously.

E. Champaign-County Area Rural Transit System (C-CARTS) Intergovernmental Agreement

In May 2017, this Board approved an Intergovernmental Agreement (IGA) between Champaign County and MTD for rural transportation in Champaign County from FY2018 to FY2020. Most terms of this updated IGA remain the same except for increased Maintenance rates for FY2019 and FY2020 and a decreased building lease payment since the furniture has been paid off as of 6/30/18.

**MOTION** by Ms. Bauer to authorize the Managing Director to execute the revised Intergovernmental Agreement between Champaign County and MTD for Champaign-County Area Rural Transit System (C-CARTS) FY2018-FY2020; seconded by Ms. Chaplan. Upon vote, the **MOTION CARRIED** unanimously.

9. **Next Meeting**

- A. Regular Board of Trustees Meeting and Public Hearing on the FY2019 Budget & Appropriation Ordinance – Wednesday, June 27, 2018 3:00 p.m. at Champaign City Council Chambers – 102 North Neil Street, Champaign

10. **Adjournment**

**MOTION** by Ms. Chaplan to adjourn the meeting; seconded by Mr. Hannon. Upon vote, the **MOTION CARRIED** unanimously.

Mr. Diel adjourned the meeting at 3:48 p.m.

Submitted by:

\_\_\_\_\_  
Clerk

1  
2  
3  
4  
5  
6

Approved:

---

Board of Trustees Chair

## MTD MANAGING DIRECTOR OPERATING NOTES

*June, 2018*

### RIDERSHIP

#### Monthly Ridership

- FY2017
- FY2018
- 5 Year Average

↓ -7.76%

↓ -16.05%

742,253

684,678

815,539

**May**

#### Year-to-Date Ridership

- FY2017
- FY2018

↓ -4.99%

↓ -8.92%

11,674,824

11,092,392

12,179,267

**Year-to-Date**

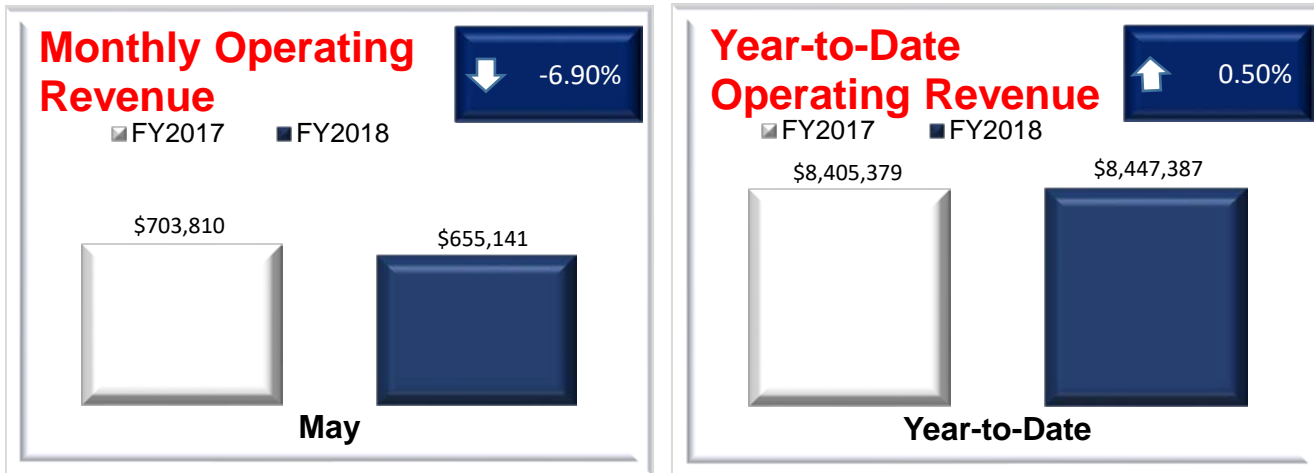
Ridership is down 7.8% from last May with the same number of days in each category except one fewer Champaign school day. We are down 5% on the YTD comparison.

Some noteworthy items are that the average temperature this May was 10 degrees warmer at 73 degrees opposed to 63 degrees last May. Also, there was much less precipitation at 3.75" vs. 5.47" last year. It was a significantly warmer and drier May this year.

The majority of the loss in ridership came from the UI students, UI Faculty/Staff and Saferides categories. These fare categories are most influenced by weather. But ridership per hour was down across almost all weekday and weekday evening routes. The weekend ridership was generally consistent with last year's.

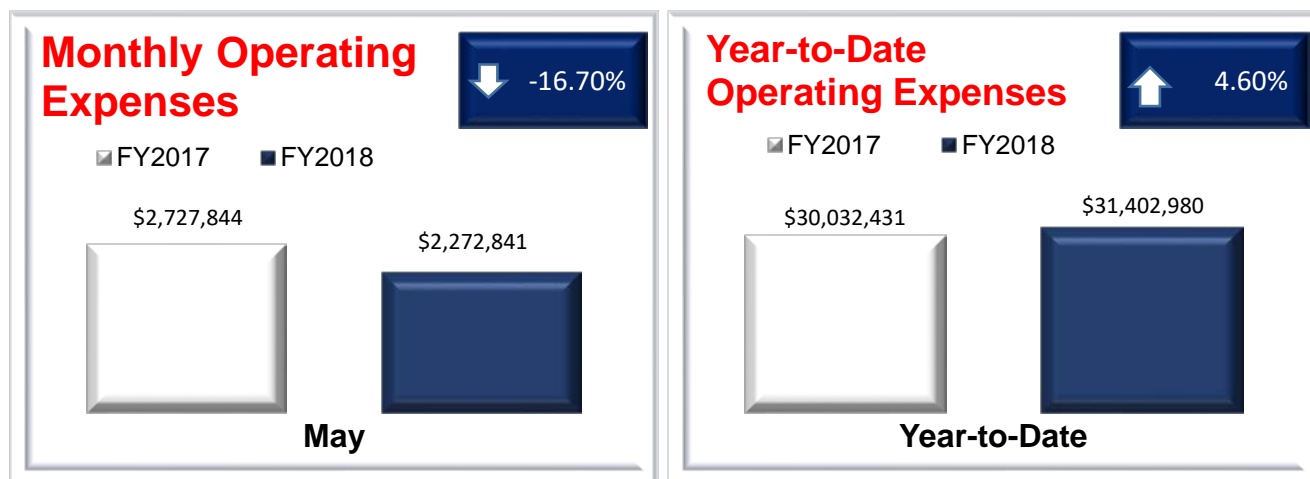
MCORE was once again in full swing, especially after Graduation weekend. White Street has been under construction for several months now. Since May 14th, Wright Street closed between Springfield and White Street causing the reroutes to be altered.

## OPERATING REVENUE



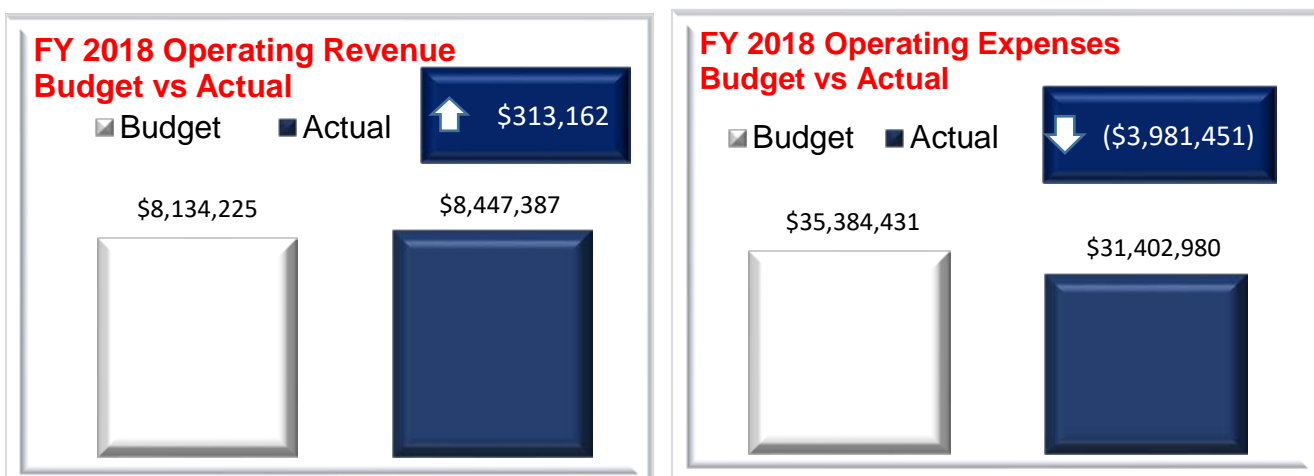
May, 2018 operating revenue was 6.9% below May, 2017, and year-to-date operating revenue was 0.5% above FY2017.

## OPERATING EXPENSES



May operating expenses were 16.7% below May, 2017. Year-to-date operating expenses were 4.6% above FY2017.

## YEAR-TO-DATE REVENUE & EXPENSES



Year-to-date operating revenues are \$313,162 above budget while operating expenses are \$3,981,451 under budget.



## MANAGING DIRECTOR'S NOTES

\* Staff had kick-off meetings with all of the involved partners for the Hydrogen Fuel Cell project. This is a super exciting direction for the District to go in! Tentatively, we'll be bidding on contractor work this fall and then it will be full steam (pun intended) ahead. We expect buses to be delivered at the tail end of CY2019 or the very beginning of CY2020.

\* In January, 2018, we started disaggregating annual and monthly pass information separately instead of all under the "Annual" umbrella. Since then, we've seen that roughly 24.5% of that fare category is paid for using a Monthly pass. This changes throughout the month, with only 16% of those riders using a monthly pass for the first three days of each month, immediately spiking up to 25% on the fourth day and then staying relatively constant for the rest of the month.

## MAJOR EFFORTS

### Development Efforts

Illinois Terminal Expansion – New work is being done to complete updated grant applications for the BUILD and 5339 Bus & Bus Facility grant programs. We are beginning discussions with the City to map out a structure regarding an Intergovernmental Agreement for the project.

Urbana Downtown Development – A meeting is pending with Farnsworth to review their preliminary findings.

### Route Analysis

We have submitted our pre-bid request for concurrence and independent cost estimate to IDOT for approval. We are awaiting on concurrence from them.

### Ridership Study

Token Transit has installed the Bluetooth beacons on all of the buses, and we are now testing them.

## ONGOING PROJECTS

Staff continues to work on:

- MCORE – Construction began again in May.
- Planning for moderate route/schedule changes in the Fall.
- RFP is out for App to accommodate demand response service in SW Champaign.
- Shelters at Round Barn, I Hotel, and Sunnycrest

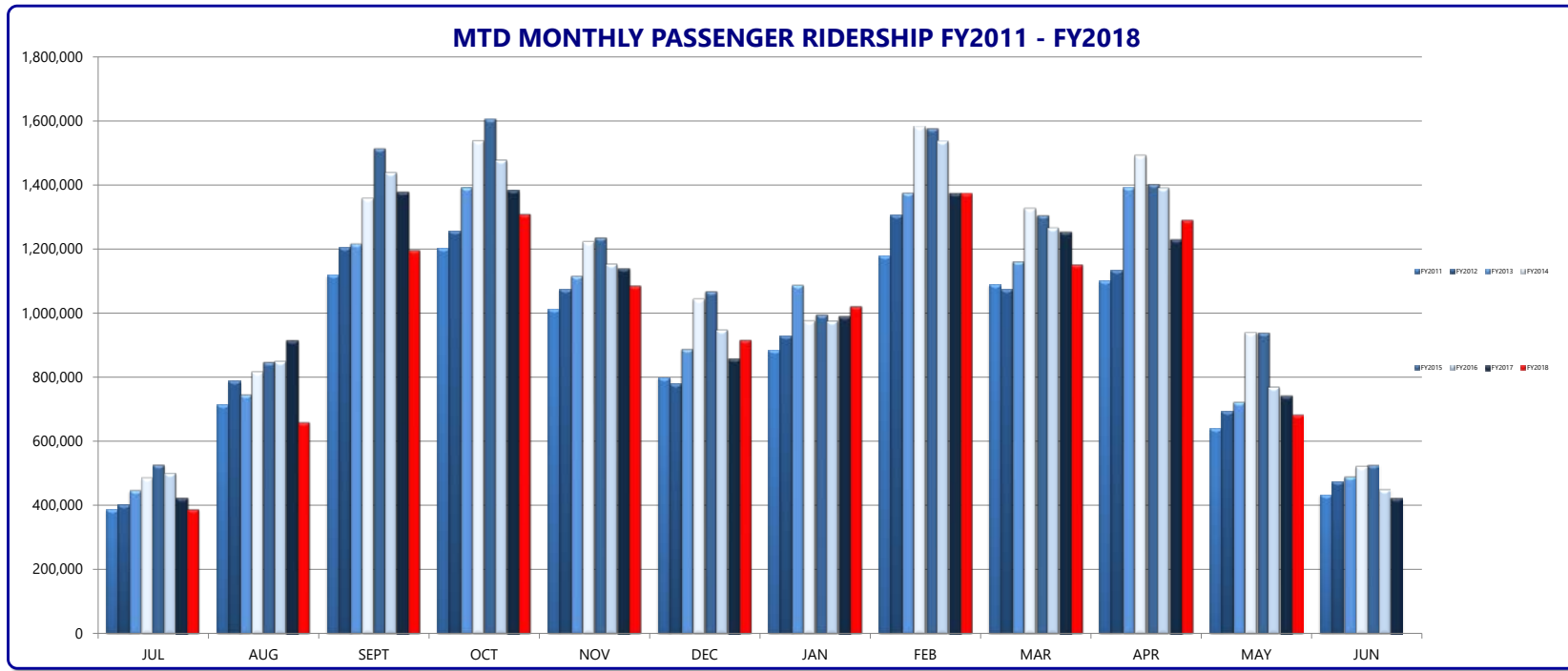
# Champaign-Urbana Mass Transit District

## Fiscal-Year-to-Date Ridership Comparison

	May-18	May-17	% Change	FY18 YTD	FY17 YTD	% Change
Adult Rides	37,317	37,946	-1.7%	438,197	472,869	-7.3%
School Rides	37,316	35,612	4.8%	401,608	391,990	2.5%
DASH/Senior - E & D Rides	52,034	52,341	-0.6%	537,462	569,315	-5.6%
U of I Faculty/Staff Rides	23,790	28,085	-15.3%	354,877	405,664	-12.5%
Annual Pass	57,064	74,184	-23.1%	707,797	903,829	-21.7%
U of I Student Rides	432,585	489,564	-11.6%	8,276,138	8,621,087	-4.0%
All Day Passes	525	553	-5.1%	6,644	8,920	-25.5%
Transfers	12,560	12,366	1.6%	132,486	155,821	-15.0%
Saferides	1,459	2,153	-32.2%	29,080	36,921	-21.2%
Monthly Pass	18,285	-	-	88,407	-	-
Veterans Pass	3,010	-	-	13,015	-	-
<b>Total Unlinked Passenger Ride:</b>	<b>675,945</b>	<b>732,804</b>	<b>-7.8%</b>	<b>10,985,711</b>	<b>11,566,416</b>	<b>-5.0%</b>
Half-Fare Cab Subsidy Rides	1,117	1,261	-11.4%	14,294	15,596	-8.3%
ADA Rides	7,616	8,188	-7.0%	92,387	92,812	-0.5%
<b>TOTAL</b>	<b>684,678</b>	<b>742,253</b>	<b>-7.8%</b>	<b>11,092,392</b>	<b>11,674,824</b>	<b>-5.0%</b>

	May-18	May-17
Weekdays	<b>22</b>	22
UI Weekdays	<b>9</b>	9
Saturdays	<b>4</b>	4
UI Saturdays	<b>1</b>	1
Sundays	<b>4</b>	4
UI Sundays	<b>1</b>	1
Champaign Schools Days	<b>18</b>	19
Urbana School Days	<b>19</b>	19
Holidays	<b>1</b>	1
Average Temperature	<b>73</b>	63
Total Precipitation	<b>3.75</b>	5.47
Average Gas Price	<b>\$2.84</b>	\$2.19

	FY2011	FY2012	FY2013	FY2014	FY2015	FY2016	FY2017	FY2018	Five Year Average
JUL	387,210	401,883	447,178	487,363	529,018	503,481	424,915	389,398	466,835
AUG	714,304	787,817	745,337	817,249	848,165	851,098	914,496	661,178	818,437
SEPT	1,117,050	1,203,512	1,215,967	1,358,928	1,514,019	1,439,491	1,375,803	1,197,928	1,377,234
OCT	1,201,806	1,254,804	1,391,576	1,538,309	1,606,340	1,478,275	1,380,990	1,310,380	1,462,859
NOV	1,011,472	1,073,953	1,115,234	1,223,026	1,236,071	1,153,897	1,137,573	1,087,343	1,167,582
DEC	797,556	777,617	887,209	1,044,064	1,068,608	949,030	857,837	917,782	967,464
JAN	881,575	927,630	1,086,962	975,863	996,469	977,223	989,700	1,022,713	992,394
FEB	1,177,828	1,305,142	1,374,653	1,582,330	1,576,687	1,537,540	1,371,778	1,375,553	1,488,778
MAR	1,089,206	1,073,789	1,160,228	1,327,336	1,305,425	1,266,676	1,251,352	1,153,015	1,260,761
APR	1,101,360	1,134,560	1,392,237	1,492,613	1,402,475	1,391,286	1,228,127	1,292,424	1,361,385
MAY	638,216	693,620	722,264	939,758	940,147	770,860	742,253	684,678	815,539
JUN	431,537	473,304	489,327	522,493	528,360	451,663	424,219		
<b>TOTAL</b>	<b>10,549,120</b>	<b>11,107,631</b>	<b>12,028,172</b>	<b>13,309,332</b>	<b>13,551,784</b>	<b>12,770,520</b>	<b>12,099,043</b>	<b>11,092,392</b>	<b>12,179,267</b>



# Champaign-Urbana Mass Transit District

June 04, 2018

## Route Performance Report

May 2018

Weekdays

	Passengers	Percent of Group Ridership *	Revenue Hours	Passengers Per Revenue Hour	Revenue Hour Performance Comparison +	Revenue Miles	Passengers Per Revenue Mile	Revenue Mile Performance Comparison +
<b>Daytime Campus Fixed Route</b>	<b>193,127</b>		<b>3,237.0</b>	<b>59.7</b>		<b>34,882.0</b>	<b>5.5</b>	
1 YELLOWhopper	28,472	14.74%	524.3	54.31	0.91	5,385.6	5.29	0.95
10 GOLDhopper	21,454	11.11%	481.8	44.53	0.75	6,195.2	3.46	0.63
12 Teal	32,060	16.60%	562.3	57.02	0.96	6,133.2	5.23	0.94
13 Silver	31,252	16.18%	486.9	64.18	1.08	5,606.7	5.57	1.01
21 Raven	3,761	1.95%	265.8	14.15	0.24	2,189.0	1.72	0.31
22 Illini	76,128	39.42%	916.0	83.11	1.39	9,372.3	8.12	1.47
<b>Daytime Community Fixed Route</b>	<b>298,514</b>		<b>11,124.3</b>	<b>26.8</b>		<b>151,616.4</b>	<b>2.0</b>	
1 Yellow	43,579	14.60%	1,034.0	42.15	1.57	13,013.4	3.35	1.70
2 Red	30,399	10.18%	1,097.1	27.71	1.03	14,022.8	2.17	1.10
3 Lavender	18,549	6.21%	574.1	32.31	1.20	7,840.0	2.37	1.20
4 Blue	10,571	3.54%	598.4	17.67	0.66	8,008.0	1.32	0.67
5 Green	46,932	15.72%	1,560.5	30.07	1.12	21,677.1	2.17	1.10
5 GREENhopper	27,979	9.37%	746.6	37.48	1.40	9,651.0	2.90	1.47
6 Orange	17,312	5.80%	719.1	24.07	0.90	8,887.7	1.95	0.99
6 ORANGEhopper	7,798	2.61%	128.7	60.59	2.26	1,522.4	5.12	2.60
7 Grey	29,905	10.02%	1,010.3	29.60	1.10	14,050.2	2.13	1.08
8 Bronze	4,338	1.45%	321.6	13.49	0.50	3,198.5	1.36	0.69
9 Brown	27,364	9.17%	1,319.4	20.74	0.77	15,589.7	1.76	0.89
10 Gold	24,590	8.24%	889.5	27.64	1.03	12,877.2	1.91	0.97
11 Ruby	688	0.23%	117.7	5.85	0.22	2,228.6	0.31	0.16
14 Navy	4,371	1.46%	456.1	9.58	0.36	9,020.0	0.48	0.25
16 Pink	4,139	1.39%	551.1	7.51	0.28	10,029.8	0.41	0.21

\* The Percent of Group Ridership shows how the ridership for the route compares to the group

+ Performance Comparison shows each Route's Passengers Per Revenue Hour or Mile compared to the Route Group's average. Routes that are continually above 1.5 or below 0.5 may need to be examined as they are not performing within the Group Standards.

Route Performance Report

May 2018

Weekdays

	Passengers	Percent of Group Ridership *	Revenue Hours	Passengers Per Revenue Hour	Revenue Hour Performance Comparison +	Revenue Miles	Passengers Per Revenue Mile	Revenue Mile Performance Comparison +
<b>Evening Campus Fixed Route</b>	<b>45,654</b>		<b>897.5</b>	<b>50.9</b>		<b>9,319.3</b>	<b>4.9</b>	
120 Teal	9,419	20.63%	249.7	37.73	0.74	2,739.3	3.44	0.70
130 Silver	6,061	13.28%	111.7	54.28	1.07	1,139.5	5.32	1.09
220 Illini	30,174	66.09%	536.2	56.27	1.11	5,440.5	5.55	1.13
<b>Evening Community Fixed Route</b>	<b>42,479</b>		<b>1,740.6</b>	<b>24.4</b>		<b>24,492.2</b>	<b>1.7</b>	
50 Green	11,784	27.74%	408.1	28.88	1.18	5,551.4	2.12	1.22
50 GREENhopper	7,384	17.38%	222.9	33.13	1.36	2,943.6	2.51	1.45
70 Grey	7,688	18.10%	300.5	25.58	1.05	4,292.2	1.79	1.03
100 Yellow	13,810	32.51%	579.7	23.82	0.98	7,391.2	1.87	1.08
110 Ruby	861	2.03%	84.7	10.17	0.42	2,134.0	0.40	0.23
180 Lime	952	2.24%	144.8	6.58	0.27	2,179.8	0.44	0.25

\* The Percent of Group Ridership shows how the ridership for the route compares to the group

+ Performance Comparison shows each Route's Passengers Per Revenue Hour or Mile compared to the Route Group's average. Routes that are continually above 1.5 or below 0.5 may need to be examined as they are not performing within the Group Standards.

## Route Performance Report

May 2018

Weekends

	Passengers	Percent of Group Ridership *	Revenue Hours	Passengers Per Revenue Hour	Revenue Hour Performance Comparison +	Revenue Miles	Passengers Per Revenue Mile	Revenue Mile Performance Comparison +
<b>Campus Fixed Route</b>	<b>21,863</b>		<b>514.8</b>	<b>42.5</b>		<b>6,210.0</b>	<b>3.5</b>	
120 Teal	6,802	31.11%	205.8	32.89	0.77	2,181.8	3.12	0.89
130 Silver	5,068	23.18%	108.8	46.17	1.09	1,159.6	4.37	1.24
220 Illini	9,993	45.71%	200.2	49.66	1.17	2,868.6	3.48	0.99
<b>Community Fixed Route</b>	<b>44,284</b>		<b>1,755.8</b>	<b>25.2</b>		<b>23,978.4</b>	<b>1.8</b>	
20 Red	2,239	5.06%	126.5	17.56	0.70	1,591.6	1.41	0.76
30 Lavender	3,195	7.21%	155.8	20.37	0.81	2,440.5	1.31	0.71
50 Green	8,650	19.53%	258.2	33.37	1.32	3,272.1	2.64	1.43
50 GREENhopper	2,009	4.54%	69.7	28.44	1.13	870.1	2.31	1.25
70 Grey	10,214	23.06%	379.2	26.86	1.07	5,084.2	2.01	1.09
100 Yellow	15,664	35.37%	499.2	31.31	1.24	6,206.6	2.52	1.37
110 Ruby	1,243	2.81%	89.2	13.78	0.55	1,822.5	0.68	0.37
180 Lime	1,070	2.42%	178.0	5.98	0.24	2,690.8	0.40	0.22

\* The Percent of Group Ridership shows how the ridership for the route compares to the group

+ Performance Comparison shows each Route's Passengers Per Revenue Hour or Mile compared to the Route Group's average. Routes that are continually above 1.5 or below 0.5 may need to be examined as they are not performing within the Group Standards.

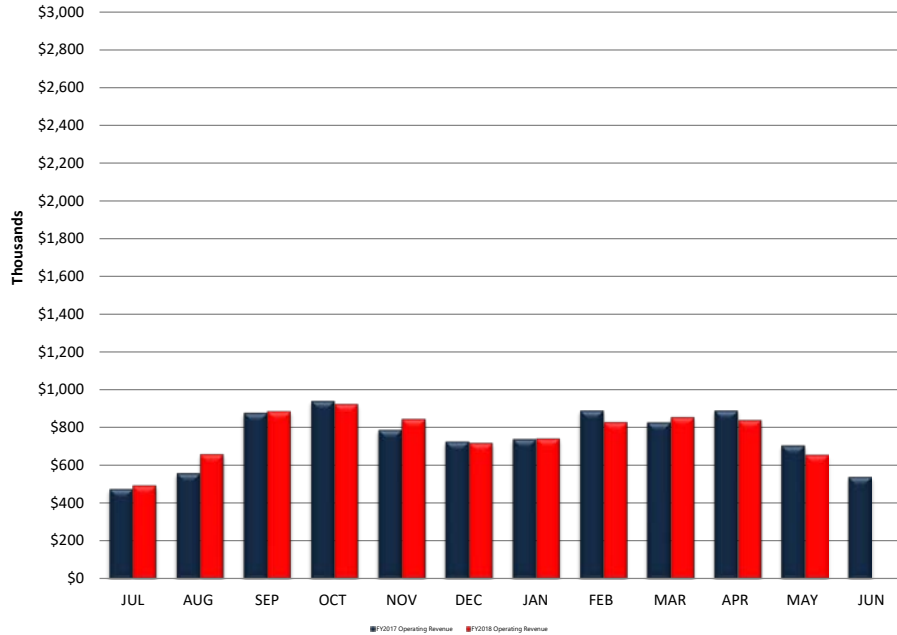
# Champaign-Urbana Mass Transit District

Comparison of FY2018 vs FY2017 Revenue and Expenses

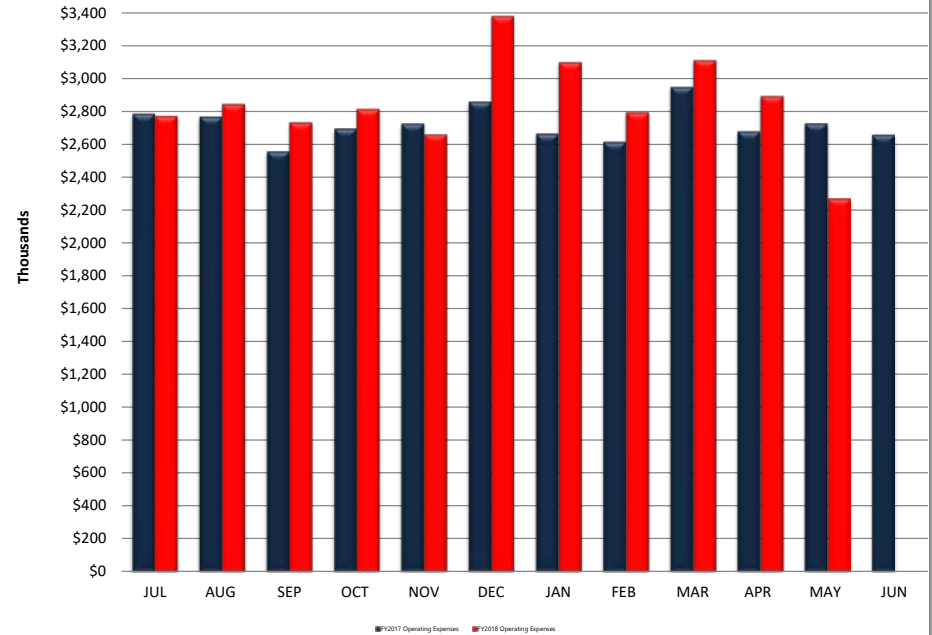
June 19, 2018

	JUL	AUG	SEP	OCT	NOV	DEC	JAN	FEB	MAR	APR	MAY	JUN
<b>FY2017 Operating Revenue</b>	\$474,927	\$558,043	\$876,551	\$938,969	\$787,082	\$725,321	\$737,305	\$889,281	\$825,409	\$888,681	\$703,810	\$539,022
<b>FY2018 Operating Revenue</b>	\$493,748	\$659,475	\$885,352	\$924,676	\$844,802	\$718,583	\$741,955	\$828,737	\$855,026	\$839,891	\$655,141	
<b>FY2017 Operating Expenses</b>	\$2,787,063	\$2,768,438	\$2,557,657	\$2,695,448	\$2,726,674	\$2,859,921	\$2,664,716	\$2,615,167	\$2,950,106	\$2,679,398	\$2,727,844	\$2,658,366
<b>FY2018 Operating Expenses</b>	\$2,775,054	\$2,847,097	\$2,736,279	\$2,816,664	\$2,662,961	\$3,383,287	\$3,102,152	\$2,797,727	\$3,114,048	\$2,894,870	\$2,272,841	
<b>FY2017 Operating Ratio</b>	17.04%	20.16%	34.27%	34.84%	28.87%	25.36%	27.67%	34.00%	27.98%	33.17%	25.80%	20.28%
<b>FY2018 Operating Ratio</b>	17.79%	23.16%	32.36%	32.83%	31.72%	21.24%	23.92%	29.62%	27.46%	29.01%	28.82%	

**Champaign-Urbana Mass Transit District  
Comparison of FY2017 vs. FY2018  
Operating Revenue**



**Champaign-Urbana Mass Transit District  
Comparison of FY2017 vs. FY2018  
Operating Expenses**



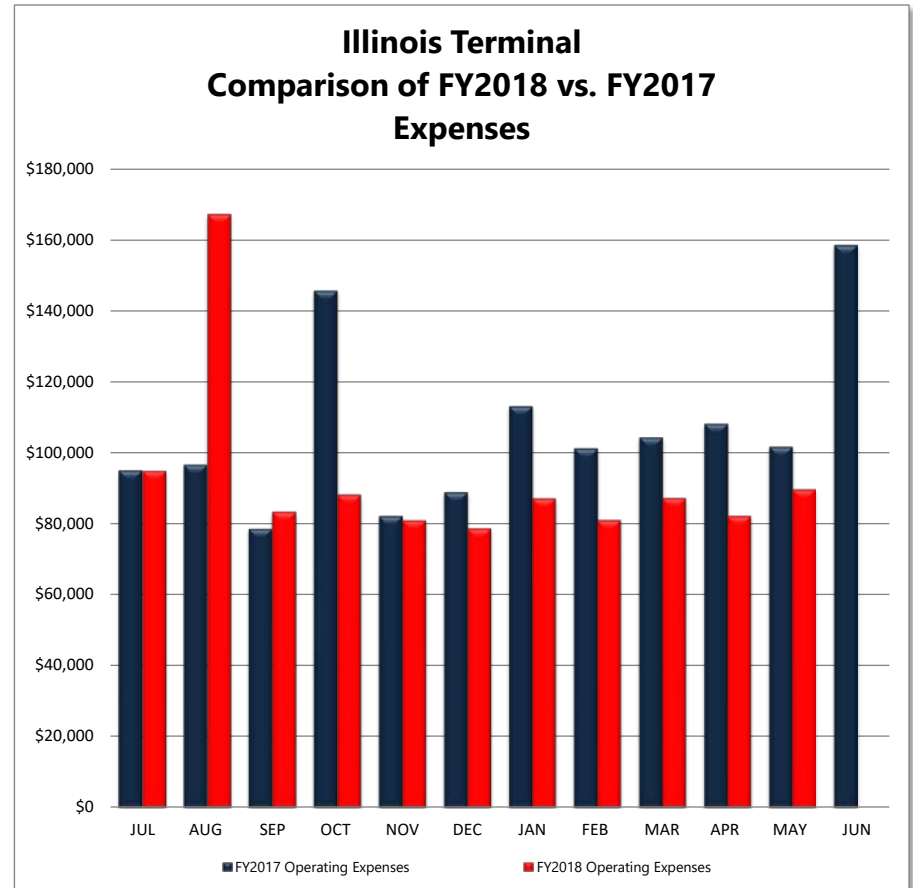
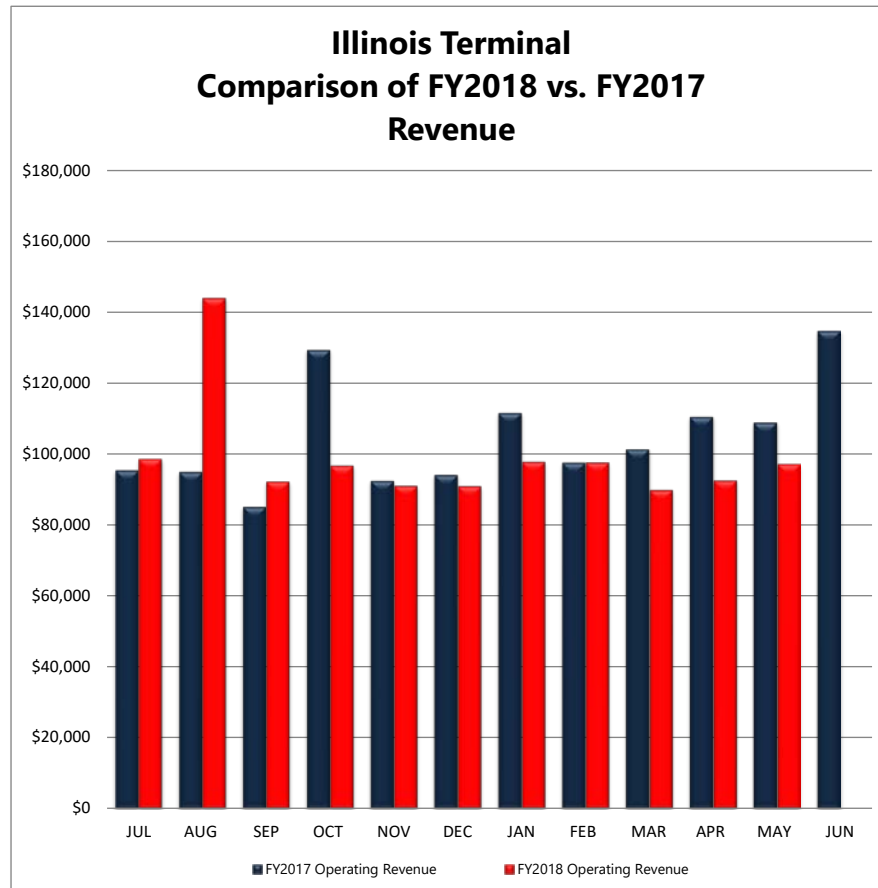
**Champaign-Urbana Mass Transit District**

Illinois Terminal

Comparison of FY2018 vs FY2017 Revenue and Expenses

June 19, 2018

	JUL	AUG	SEP	OCT	NOV	DEC	JAN	FEB	MAR	APR	MAY	JUN	Last 12 Months
<b>FY2017 Operating Revenue</b>	\$95,557	\$95,109	\$85,255	\$129,422	\$92,638	\$94,275	\$111,695	\$97,696	\$101,439	\$110,623	\$108,935	\$134,798	<b>Revenue</b>
<b>FY2018 Operating Revenue</b>	\$98,678	\$144,131	\$92,338	\$96,825	\$91,134	\$90,970	\$97,915	\$97,623	\$89,888	\$92,618	\$97,194		<b>\$1,224,113</b>
<b>FY2017 Operating Expense</b>	\$95,173	\$96,774	\$78,703	\$145,807	\$82,286	\$88,969	\$113,240	\$101,343	\$104,502	\$108,325	\$101,810	\$158,693	<b>Expenses</b>
<b>FY2018 Operating Expense</b>	\$95,062	\$167,281	\$83,524	\$88,337	\$81,114	\$78,855	\$87,254	\$81,207	\$87,387	\$82,312	\$89,792		<b>\$1,180,816</b>
<b>FY2017 Operating Ratio</b>	100.4%	98.3%	108.3%	88.8%	112.6%	106.0%	98.6%	96.4%	97.1%	102.1%	107.0%	84.9%	<b>Ratio</b>
<b>FY2018 Operating Ratio</b>	103.8%	86.2%	110.6%	109.6%	112.4%	115.4%	112.2%	120.2%	102.9%	112.5%	108.2%		<b>103.7%</b>





<b>HOURS</b>	May 2017	May 2018	% Change	FY2017 to Date	FY2018 to Date	% Change
Passenger Revenue	21,451.08	<b>21,633.87</b>	0.9%	249,973.99	<b>250,248.56</b>	0.1%
Vacation/Holiday/Earned Time	5,307.58	<b>7,349.92</b>	38.5%	65,553.14	<b>73,385.71</b>	11.9%
Non-Revenue	7,468.22	<b>6,815.40</b>	-8.7%	72,464.20	<b>68,417.00</b>	-5.6%
<b>TOTAL</b>	34,226.88	<b>35,799.19</b>	<b>4.59%</b>	387,991.33	<b>392,051.27</b>	<b>1.05%</b>

<b>REVENUE/EXPENSES</b>	May 2017	May 2018	% Change	FY2017 to Date	FY2018 to Date	% Change
Operating Revenue	\$703,810.20	<b>\$655,141.41</b>	-6.9%	\$8,405,378.61	<b>\$8,447,387.13</b>	0.5%
Operating Expenses	\$2,727,844.05	<b>\$2,272,841.32</b>	-16.7%	\$30,032,431.07	<b>\$31,402,980.10</b>	4.6%
Operating Ratio	25.80%	<b>28.82%</b>	11.7%	27.99%	<b>26.90%</b>	-3.9%
Passenger Revenue/Revenue Vehicle Hour	\$24.07	<b>\$23.13</b>	-3.9%	\$26.07	<b>\$26.09</b>	0.1%

<b>RIDERSHIP</b>	May 2017	May 2018	% Change	FY2017 to Date	FY2018 to Date	% Change
Revenue Passenger	720,438	<b>663,385</b>	-7.9%	11,410,595	<b>10,853,225</b>	-4.9%
Transfers	12,366	<b>12,560</b>	1.6%	155,821	<b>132,486</b>	-15.0%
Total Unlinked	732,804	<b>675,945</b>	-7.8%	11,566,416	<b>10,985,711</b>	-5.0%
ADA Riders	8,188	<b>7,616</b>	-7.0%	92,812	<b>92,387</b>	-0.5%
Half Fare Cab	1,261	<b>1,117</b>	-11.4%	15,596	<b>14,294</b>	-8.3%
<b>TOTAL</b>	742,253	<b>684,678</b>	-7.76%	11,674,824	<b>11,092,392</b>	-4.99%

<b>PASSENGERS/REVENUE HOUR</b>	May 2017	May 2018	% Change	FY2017 to Date	FY2018 to Date	% Change
Hour	34.16	<b>31.24</b>	-8.5%	46.27	<b>43.90</b>	-5.1%

# Champaign Urbana Mass Transit District

## Budget Analysis Report

Fiscal Year: 2018		Period 11	Division: 00 Champaign Urbana Mass Transit District					As of: 06/15/2018	
May 2018	Budget This Period	May 2017	Act/Bgt Var %		2018 YTD	July Thru May Budget YTD	2017 YTD	Act/Bgt Var %	
4000000000 ***** R E V E N U E *****									
4000000099 ** TRANSPORTATION REVENUE									
4010000000 * PASSENGER FARES									
48,979.48	61,666.67	51,398.95	-20.57%	4010100000 FULL ADULT FARES	563,459.36	678,333.37	655,140.77	-16.93%	
1,990.30	1,500.00	1,092.00	32.69%	4010300000 STUDENT FARES	13,862.30	16,500.00	13,558.00	-15.99%	
2.70	0.00	-6.00	100.00%	4010700000 FARE REFUNDS	-37.30	0.00	-141.00	-100.00%	
15,904.58	18,333.33	14,357.25	-13.25%	4010800000 ANNUAL PASS REVENUE	162,413.40	201,666.63	169,282.49	-19.46%	
5,561.75	7,750.00	6,307.37	-28.24%	4011000000 HALF FARE CAB	71,908.79	85,250.00	73,578.24	-15.65%	
3,092.00	4,291.67	3,644.00	-27.95%	4011100000 ADA TICKETS & FARES	41,072.00	47,208.37	38,379.01	-13.00%	
75,530.81	93,541.67	76,793.57	-19.25%	4019900099 * TOTAL PASSENGER FARES	852,678.55	1,028,958.37	949,797.51	-17.13%	
424,924.46	400,200.00	439,626.44	6.18%	4020300000 U OF I CAMPUS SERVICE	5,676,874.73	5,373,600.00	5,566,495.45	5.64%	
20,299.66	19,583.33	19,560.91	3.66%	4020500000 ADA - U I & DSC CONTRACTS	223,296.26	215,416.63	215,170.01	3.66%	
62,214.00	60,000.00	59,271.00	3.69%	4030100000 SCHOOL SERVICE FARES	560,041.00	540,000.00	533,604.00	3.71%	
991.77	0.00	4,824.00	100.00%	4060100000 I.T. COMMISSIONS	26,830.78	0.00	33,105.56	100.00%	
17,718.41	25,000.00	23,264.68	-29.13%	4060300000 ADVERTISING REVENUE	271,974.16	275,000.00	303,145.69	-1.10%	
601,679.11	598,325.00	623,340.60	0.56%	4069900099 ** TOTAL TRANSPORTATION REVEN	7,611,695.48	7,432,975.00	7,601,318.22	2.40%	
4070000000 ** NON - TRANSPORTATION REVENUE									
826.77	1,666.67	1,825.28	-50.39%	4070100000 SALE OF MAINTENANCE SERVICES	46,908.90	18,333.37	22,143.95	155.87%	
0.00	0.00	0.00	0.00%	4070200000 RENTAL OF REVENUE VEHICLES	0.00	0.00	0.00	0.00%	
40,533.19	35,416.67	41,110.44	14.45%	4070300000 BUILDING RENTAL - IL TERMINAL	423,660.95	389,583.37	402,839.33	8.75%	
2,699.18	20,833.33	25,856.97	-87.04%	4070300002 BUILDING RENTAL - 801 & 1101	232,394.44	229,166.63	248,124.40	1.41%	
13,126.04	5,833.33	9,098.93	125.02%	4070400000 INVESTMENT INCOME	136,570.91	64,166.63	74,930.85	112.84%	
-9,452.88	0.00	-610.23	-100.00%	4070400002 +/- FAIR VALUE OF INVESTMENT	-57,386.65	0.00	-27,110.24	-100.00%	
0.00	0.00	-19.00	0.00%	4070800000 OVER OR SHORT	46.35	0.00	-65.99	100.00%	
5,730.00	0.00	0.00	100.00%	4079800000 GAIN ON FIXED ASSET DISPOSAL	9,671.00	0.00	42,357.65	100.00%	
0.00	0.00	3,207.21	0.00%	4079900001 OTHER NONTRANS. REVENUES	43,825.75	0.00	40,840.44	100.00%	
53,462.30	63,750.00	80,469.60	-16.14%	4079900099 ** TOTAL NON - TRANSPORTATION R	835,691.65	701,250.00	804,060.39	19.17%	
655,141.41	662,075.00	703,810.20	-1.05%	4079999999 *** TOTAL TRANS & NON - TRANS RE	8,447,387.13	8,134,225.00	8,405,378.61	3.85%	

# Champaign Urbana Mass Transit District

## Budget Analysis Report

Fiscal Year: 2018		Period 11	Division: 00 Champaign Urbana Mass Transit District				As of: 06/15/2018	
May 2018	Budget This Period	May 2017	Act/Bgt Var %		2018 YTD	July Thru May Budget YTD	2017 YTD	Act/Bgt Var %
4080000000 ** TAXES LEVIED DIRECTLY								
1,006,434.72	625,000.00	642,068.45	61.03%	4080100000 PROPERTY TAX REVENUE	7,489,768.05	6,875,000.00	7,018,780.95	8.94%
0.00	0.00	0.00	0.00%	4080100001 PROPERTY TAX - UNCOLLECTIBLE R	0.00	0.00	0.00	0.00%
41,347.81	24,870.00	35,494.67	66.26%	4080600000 REPLACEMENT TAX REVENUE	156,873.75	123,090.00	193,411.37	27.45%
0.00	0.00	32,270.00	0.00%	4089900001 MISCELLANEOUS PROPERTY TAXES	16,498.51	0.00	52,017.66	100.00%
4110000000 ** STATE GRANTS & REIMBURSEMEN								
1,901,530.63	2,273,500.00	1,749,197.82	-16.36%	4110100000 OPERATING ASSISTANCE - STATE	23,135,216.65	25,008,500.00	19,706,120.94	-7.49%
0.00	0.00	-3,242,086.04	0.00%	4111000000 CAPITAL GRANTS - STATE	0.00	0.00	-2,188,774.70	0.00%
0.00	0.00	0.00	0.00%	4111000001 CAPITAL GRANTS - STATE - PASS TH	0.00	0.00	0.00	0.00%
0.00	0.00	0.00	0.00%	4112000000 COUNTY REIMBURSEMENTS	0.00	0.00	0.00	0.00%
-0.71	0.00	0.00	-100.00%	4119900000 STATE REIMBURSEMENTS	5,444.32	0.00	7,287.55	100.00%
0.00	0.00	0.00	0.00%	4119900001 STATE REIMB - PASS THRU'S	0.00	0.00	-7,287.55	0.00%
4130000000 ** FEDERAL GRANTS & REIMBURSEM								
0.00	0.00	0.00	0.00%	4130100000 OPERATING ASSISTANCE - FEDERAL	0.00	0.00	0.00	0.00%
0.00	0.00	664,523.75	0.00%	4130500000 CAPITAL GRANTS - FEDERAL	1,014,352.25	0.00	10,409,779.09	100.00%
0.00	0.00	0.00	0.00%	4130600000 FEDERAL GRANT PASS THROUGH \$'	-36,714.40	0.00	-33,503.52	-100.00%
0.00	0.00	0.00	0.00%	4139900000 FEDERAL REIMBURSEMENTS	0.00	0.00	0.00	0.00%
0.00	0.00	0.00	0.00%	4409900000 OTHER SOURCES/SUBSIDIES (PTA \$)	0.00	0.00	0.00	0.00%
3,604,453.86	3,585,445.00	585,278.85	0.53%	4999900099 **** TOTAL REVENUE ****	40,228,826.26	40,140,815.00	43,563,210.40	0.22%

# Champaign Urbana Mass Transit District

## Budget Analysis Report

Fiscal Year: 2018	Period 11	Division: 00 Champaign Urbana Mass Transit District				As of: 06/15/2018		
May 2018	Budget This Period	May 2017	Act/Bgt Var %		2018 YTD	July Thru May Budget YTD	2017 YTD	Act/Bgt Var %
5000000000 **** E X P E N S E S ***								
5010000000 ** LABOR								
721,889.70	736,030.00	701,450.80	-1.92%	5010101000 OPERATORS WAGES	8,190,379.23	8,179,100.00	7,950,819.03	0.14%
96,103.21	107,510.00	99,528.89	-10.61%	5010204000 MECHANICS WAGES - MAINT	1,044,641.49	1,195,090.00	999,659.61	-12.59%
58,734.03	57,890.00	48,152.80	1.46%	5010304000 MAINTENANCE WAGES - MAINT	612,216.96	643,510.00	539,774.98	-4.86%
89,154.43	93,416.67	83,833.21	-4.56%	5010401000 SUPERVISORS SALARIES - OPS	1,014,286.62	1,027,583.37	924,491.07	-1.29%
14,594.40	33,080.00	13,857.31	-55.88%	5010404000 SUPERVISORS SALARIES - MAINT	162,973.94	367,720.00	178,652.02	-55.68%
55,426.33	68,558.00	58,852.42	-19.15%	5010501000 OVERHEAD SALARIES - OPS	619,678.99	762,099.00	638,528.17	-18.69%
33,681.30	24,810.00	23,077.81	35.76%	5010504000 OVERHEAD SALARIES - MAINT	282,880.44	275,790.00	235,193.26	2.57%
94,965.34	100,000.00	88,735.15	-5.03%	5010516000 OVERHEAD SALARIES - G&A	1,003,935.44	1,100,000.00	860,294.23	-8.73%
4,865.42	11,833.33	7,723.17	-58.88%	5010516200 OVERHEAD SALARIES - IT	87,882.98	130,166.63	86,381.99	-32.48%
21,751.62	25,000.00	20,368.47	-12.99%	5010601000 CLERICAL WAGES - OPS	241,348.24	275,000.00	250,611.77	-12.24%
3,900.47	4,166.67	4,928.63	-6.39%	5010604000 CLERICAL WAGES - MAINT	46,149.65	45,833.37	54,856.07	0.69%
12,640.77	25,833.33	20,894.92	-51.07%	5010616000 CLERICAL WAGES - G&A	159,708.12	284,166.63	224,639.96	-43.80%
7,183.14	10,000.00	7,111.30	-28.17%	5010616200 CLERICAL WAGES - IT	79,902.12	110,000.00	74,788.21	-27.36%
9,483.49	11,666.67	11,909.47	-18.71%	5010716200 SECURITY WAGES - IT	108,057.38	128,333.37	114,506.45	-15.80%
-4,829.70	0.00	-2,816.28	-100.00%	5010801000 LABOR CREDIT - OPS	-37,828.72	0.00	-37,299.10	-100.00%
-5,264.94	0.00	-3,374.13	-100.00%	5010804000 LABOR CREDIT - MAINT	-47,579.18	0.00	-39,961.33	-100.00%
-2,084.33	0.00	-564.84	-100.00%	5010806000 LABOR CREDIT - G&A	-13,913.25	0.00	-12,197.18	-100.00%
8,034.98	11,250.00	11,334.59	-28.58%	5010816200 MAINTENANCE WAGES - IT	115,857.96	123,750.00	122,051.43	-6.38%
1,220,229.66	1,321,044.67	1,195,003.69	-7.63%	5019999000 ** TOTAL LABOR	13,670,578.41	14,648,142.37	13,165,790.64	-6.67%
5020000000 ** FRINGE BENEFITS								
79,281.97	80,633.00	76,105.31	-1.68%	5020101000 FICA - OPS	875,621.27	896,320.00	856,315.64	-2.31%
20,426.45	17,367.00	16,502.26	17.62%	5020104000 FICA - MAINT	194,611.01	193,053.00	184,621.98	0.81%
7,173.90	6,666.67	7,350.73	7.61%	5020116000 FICA - G&A	75,785.37	73,333.37	66,657.61	3.34%
2,948.76	3,308.00	2,881.92	-10.86%	5020116200 FICA - IT	32,529.38	36,772.00	30,809.31	-11.54%
127,719.89	161,265.00	126,647.61	-20.80%	5020201000 IMRF - OPS	1,559,113.16	1,792,635.00	1,571,373.86	-13.03%
25,935.01	47,553.00	25,663.97	-45.46%	5020204000 IMRF - MAINT	395,108.17	528,600.00	343,163.27	-25.25%
10,865.00	16,666.67	11,965.53	-34.81%	5020216000 IMRF - G&A	140,442.31	183,333.37	132,544.05	-23.40%
3,532.13	5,376.00	4,737.97	-34.30%	5020216200 IMRF - IT	51,815.06	59,757.00	52,186.53	-13.29%
223,981.80	234,000.00	220,809.74	-4.28%	5020301000 MEDICAL INSURANCE - OPS	2,498,832.17	2,574,000.00	2,469,892.61	-2.92%
53,153.10	54,833.33	44,995.98	-3.06%	5020304000 MEDICAL INSURANCE - MAINT	565,312.83	603,166.63	537,754.39	-6.28%
21,046.97	22,916.67	22,767.05	-8.16%	5020316000 MEDICAL INSURANCE - G&A	249,111.75	252,083.37	232,688.41	-1.18%
13,165.47	12,500.00	12,627.56	5.32%	5020316200 MEDICAL INSURANCE - IT	148,476.51	137,500.00	137,787.96	7.98%
0.00	0.00	0.00	0.00%	5020401000 DENTAL INSURANCE - OPS	0.00	0.00	0.00	0.00%

# Champaign Urbana Mass Transit District

## Budget Analysis Report

Fiscal Year: 2018	Period 11	Division: 00 Champaign Urbana Mass Transit District					As of: 06/15/2018	
May 2018	Budget This Period	May 2017	Act/Bgt Var %		2018 YTD	July Thru May Budget YTD	2017 YTD	Act/Bgt Var %
0.00	0.00	0.00	0.00%	5020404000 DENTAL INSURANCE - MAINT	0.00	0.00	0.00	0.00%
0.00	0.00	0.00	0.00%	5020416000 DENTAL INSURANCE - G&A	0.00	0.00	0.00	0.00%
749.31	3,333.33	565.85	-77.52%	5020501000 LIFE INSURANCE - OPS	25,483.34	36,666.63	26,810.85	-30.50%
164.64	1,250.00	141.00	-86.83%	5020504000 LIFE INSURANCE - MAINT	7,039.50	13,750.00	6,581.05	-48.80%
259.90	416.67	264.58	-37.62%	5020516000 LIFE INSURANCE - G&A	4,530.33	4,583.37	4,409.38	-1.16%
20.16	0.00	18.00	100.00%	5020516200 LIFE INSURANCE - IT	1,098.27	0.00	991.41	100.00%
0.00	0.00	0.00	0.00%	5020701000 UNEMPLOYMENT INSURANCE - OPS	26,655.78	37,500.00	27,146.17	-28.92%
0.00	0.00	0.00	0.00%	5020704000 UNEMPLOYMENT INSURANCE - MAIN	5,572.65	9,000.00	5,838.32	-38.08%
0.00	0.00	0.00	0.00%	5020716000 UNEMPLOYMENT INSURANCE - G&A	1,766.69	2,250.00	1,845.12	-21.48%
0.00	0.00	0.00	0.00%	5020716200 UNEMPLOYMENT INSURANCE - IT	1,254.82	2,250.00	1,209.40	-44.23%
5.88	16,666.67	7,746.31	-99.96%	5020801000 WORKERS COMP INSURANCE - OPS	78,237.75	183,333.37	108,037.42	-57.32%
5,073.11	18,750.00	10,027.08	-72.94%	5020804000 WORKERS COMP INSURANCE - MAIN	228,747.07	206,250.00	172,695.26	10.91%
-303.38	416.67	333.50	-172.81%	5020816000 WORKERS COMP INSURANCE - G&A	3,362.21	4,583.37	3,864.43	-26.64%
5,923.52	4,166.67	11,634.86	42.16%	5020816200 WORKERS COMP INSURANCE - IT	26,153.75	45,833.37	95,600.92	-42.94%
25,105.20	29,644.00	25,293.60	-15.31%	5021001000 HOLIDAYS - OPS	176,117.12	197,100.00	147,547.60	-10.65%
6,648.80	5,736.00	6,056.40	15.91%	5021004000 HOLIDAYS - MAINT	49,292.24	40,000.00	38,497.84	23.23%
0.00	0.00	0.00	0.00%	5021016000 HOLIDAYS - G&A	916.80	0.00	0.00	100.00%
502.96	574.00	637.84	-12.38%	5021016200 HOLIDAYS - IT	2,584.64	4,000.00	3,853.52	-35.38%
56,322.40	51,091.00	42,605.68	10.24%	5021101000 VACATIONS - OPS	477,351.27	517,862.00	430,531.70	-7.82%
35,256.28	14,491.00	12,715.68	143.30%	5021104000 VACATIONS - MAINT	153,766.04	146,879.00	110,885.32	4.69%
0.00	0.00	0.00	0.00%	5021116000 VACATION - G&A	916.80	0.00	356.96	100.00%
1,124.00	711.00	541.20	58.09%	5021116200 VACATIONS - IT	8,296.40	7,208.00	6,951.36	15.10%
4,722.16	3,191.67	2,953.84	47.95%	5021201000 OTHER PAID ABSENCES - OPS	38,075.23	35,108.37	93,191.79	8.45%
1,167.20	1,250.00	1,615.76	-6.62%	5021204000 OTHER PAID ABSENCES - MAINT	7,828.16	13,750.00	14,872.98	-43.07%
0.00	0.00	0.00	0.00%	5021216000 OTHER PAID ABSENCES - G&A	183.36	0.00	0.00	100.00%
113.60	0.00	0.00	100.00%	5021216200 OTHER PAID ABSENCES - IT	434.96	0.00	108.24	100.00%
2,169.61	4,083.33	3,788.73	-46.87%	5021301000 UNIFORM ALLOWANCES - OPS	30,178.55	44,916.63	25,155.89	-32.81%
1,479.01	2,583.33	804.09	-42.75%	5021304000 UNIFORM ALLOWANCES - MAINT	9,456.40	28,416.63	9,782.62	-66.72%
39.33	333.33	51.35	-88.20%	5021316200 UNIFORM ALLOWANCES - IT	1,617.48	3,666.63	1,749.70	-55.89%
399.00	1,666.67	1,123.68	-76.06%	5021401000 OTHER FRINGE BENEFITS - OPS	9,427.38	18,333.37	13,852.22	-48.58%
2,095.81	833.33	252.19	151.50%	5021404000 OTHER FRINGE BENEFITS - MAINT	9,863.80	9,166.63	8,846.23	7.61%
1,950.00	4,166.67	846.47	-53.20%	5021416000 OTHER FRINGE BENEFITS - G&A	31,869.44	45,833.37	19,128.76	-30.47%
0.00	916.67	46.97	-100.00%	5021416200 OTHER FRINGE BENEFITS - IT	564.37	10,083.37	941.67	-94.40%
117,910.03	113,504.00	122,840.68	3.88%	5021501000 EARNED TIME - OPS	1,329,281.90	1,595,183.00	1,359,574.97	-16.67%
31,072.16	14,580.00	10,563.53	113.11%	5021504000 EARNED TIME - MAINT	229,563.92	204,910.00	198,132.54	12.03%
1,970.49	518.00	1,280.63	280.40%	5021516200 EARNED TIME - IT	26,045.07	7,284.00	13,747.59	257.57%
125.00	98.00	250.00	27.55%	5021604000 TOOL ALLOWANCE - MAINT	10,123.42	8,902.00	9,864.31	13.72%
3,886.57	3,191.67	9,050.63	21.77%	5021701000 DISABILITY - OPS	42,701.07	35,108.37	58,002.23	21.63%
0.00	583.33	0.00	-100.00%	5021704000 DISABILITY - MAINT	0.00	6,416.63	6,779.34	-100.00%

# Champaign Urbana Mass Transit District

## Budget Analysis Report

Fiscal Year: 2018		Period 11	Division: 00 Champaign Urbana Mass Transit District				As of: 06/15/2018	
May 2018	Budget This Period	May 2017	Act/Bgt Var %		2018 YTD	July Thru May Budget YTD	2017 YTD	Act/Bgt Var %
0.00	0.00	0.00	0.00%	5021716200 DISABILITY - IT	0.00	0.00	243.54	0.00%
0.00	0.00	0.00	0.00%	5021801000 WORKERS COMP - PAYROLL - OPS	640.26	0.00	118.50	100.00%
0.00	0.00	0.00	0.00%	5021804000 WORKERS COMP - PAYROLL - MAINT	2,716.71	0.00	-44.35	100.00%
0.00	0.00	0.00	0.00%	5021816200 WORKERS COMP - PAYROLL - IT	0.00	0.00	0.00	0.00%
0.00	8,333.33	0.00	-100.00%	5022001000 EARLY RETIREMENT PLAN - OPS	163,687.00	91,666.63	147,558.00	78.57%
0.00	3,750.00	0.00	-100.00%	5022004000 EARLY RETIREMENT PLAN - MAINT	94,565.00	41,250.00	-108,188.00	129.25%
0.00	0.00	0.00	0.00%	5022016000 EARLY RETIREMENT PLAN - G&A	9,828.00	0.00	0.00	100.00%
0.00	0.00	0.00	0.00%	5022016200 EARLY RETIREMENT PLAN - IT	0.00	0.00	0.00	0.00%
895,183.20	973,915.68	847,105.76	-8.08%	5029999900 ** TOTAL FRINGE BENEFITS	10,114,553.94	10,989,598.48	9,682,868.42	-7.96%
5030000000 ** SERVICES								
16,703.86	58,333.33	35,882.43	-71.36%	5030316000 PROFESSIONAL SERVICES - G&A	427,812.69	641,666.63	348,703.65	-33.33%
0.00	250.00	0.00	-100.00%	5030316200 PROFESSIONAL SERVICES - IT	2,067.64	2,750.00	662.79	-24.81%
0.00	0.00	0.00	0.00%	5030316300 PROFESSIONAL SERVICES - IT - NON	0.00	0.00	90.00	0.00%
-586,056.34	0.00	10,481.15	-100.00%	5030316400 PROFESSIONAL SERVICES - G&A - N	16,273.55	0.00	106,879.86	100.00%
0.00	0.00	0.00	0.00%	5030404000 TEMPORARY HELP - MAINT	0.00	0.00	0.00	0.00%
34,580.30	0.00	0.00	100.00%	5030416000 TEMPORARY HELP - G&A	104,321.98	0.00	0.00	100.00%
339.60	0.00	0.00	100.00%	5030501000 CONTRACT MAINTENANCE - OPS	8,784.55	0.00	3,414.41	100.00%
12,131.11	10,000.00	4,874.07	21.31%	5030504000 CONTRACT MAINTENANCE - MAINT	88,651.46	110,000.00	71,508.99	-19.41%
38,065.37	37,500.00	30,914.45	1.51%	5030516000 CONTRACT MAINTENANCE - G&A	430,745.07	412,500.00	399,619.10	4.42%
1,561.32	3,333.33	2,071.42	-53.16%	5030516200 CONTRACT MAINTENANCE - IT	27,399.64	36,666.63	36,044.01	-25.27%
0.00	0.00	0.00	0.00%	5030516300 CONTRACT MAINTENANCE - IT - NON	0.00	0.00	569.20	0.00%
0.00	0.00	0.00	0.00%	5030604000 CUSTODIAL SERVICES - MAINT	0.00	0.00	1,800.00	0.00%
2,817.17	4,583.33	5,829.07	-38.53%	5030801000 PRINTING SERVICES - OPS	59,159.44	50,416.63	45,097.81	17.34%
0.00	83.33	0.00	-100.00%	5030804000 PRINTING SERVICES - MAINT	1,070.50	916.63	1,165.00	16.79%
800.00	0.00	0.00	100.00%	5030816000 PRINTING SERVICES - G&A	2,955.01	0.00	1,239.61	100.00%
150.00	0.00	0.00	100.00%	5030816200 PRINTING SERVICES - IT	461.15	0.00	0.00	100.00%
0.00	0.00	0.00	0.00%	5030816300 PRINTING SERVICES - IT - NON REIM	0.00	0.00	0.00	0.00%
1,796.73	2,333.33	1,243.58	-23.00%	5039901000 OTHER SERVICES - OPS	14,183.50	25,666.63	15,763.61	-44.74%
0.00	416.67	0.00	-100.00%	5039904000 OTHER SERVICES - MAINT	394.61	4,583.37	0.00	-91.39%
1,411.54	3,333.33	-4,422.72	-57.65%	5039916000 OTHER SERVICES - G&A	50,243.47	36,666.63	18,472.54	37.03%
455.98	583.33	217.99	-21.83%	5039916200 OTHER SERVICES - IT	3,385.83	6,416.63	2,637.89	-47.23%
246.27	0.00	456.60	100.00%	5039916300 OTHER SERVICES - IT - NON REIMB	3,464.64	0.00	5,132.57	100.00%
0.00	0.00	0.00	0.00%	5039916400 OTHER SERVICES - G&A - NON REIM	0.00	0.00	0.00	0.00%
-474,997.09	120,749.98	87,548.04	-493.37%	5039999900 ** TOTAL SERVICES	1,241,374.73	1,328,249.78	1,058,801.04	-6.54%

# Champaign Urbana Mass Transit District

## Budget Analysis Report

Fiscal Year: 2018		Period 11	Division: 00 Champaign Urbana Mass Transit District					As of: 06/15/2018	
May 2018	Budget This Period	May 2017	Act/Bgt Var %		2018 YTD	July Thru May Budget YTD	2017 YTD	Act/Bgt Var %	
5039999999 **** E X P E N S E S **									
5040000000 ** MATERIALS & SUPPLIES CONSUM									
136,225.21	212,496.00	103,298.34	-35.89%	5040101000 FUEL & LUBRICANTS - OPS	1,358,302.77	2,853,239.00	1,188,626.65	-52.39%	
10,628.40	7,792.00	9,036.01	36.40%	5040104000 FUEL & LUBRICANTS - MAINT	96,945.70	104,618.00	87,391.42	-7.33%	
12,797.32	11,583.33	12,381.46	10.48%	5040201000 TIRES & TUBES - OPS - MB DO	131,637.59	127,416.63	131,967.49	3.31%	
1,731.88	916.67	826.40	88.93%	5040204000 TIRES & TUBES - MAINT - DR DO	11,053.72	10,083.37	5,154.10	9.62%	
0.00	0.00	0.00	0.00%	5040206000 TIRES & TUBES - NON REVENUE VEH	0.00	0.00	516.99	0.00%	
3,281.45	3,333.33	6,505.79	-1.56%	5040304000 GARAGE EQUIPMENT - REPAIRS - MA	40,438.85	36,666.63	32,281.38	10.29%	
24,363.82	7,500.00	13,904.42	224.85%	5040404000 BLDG & GROUND REPAIRS - MAINT -	89,819.18	82,500.00	92,765.89	8.87%	
4,316.69	0.00	1,728.39	100.00%	5040404001 BLDG & GROUND REPAIRS - MAINT -	34,169.96	0.00	21,949.68	100.00%	
4,126.74	10,000.00	8,909.53	-58.73%	5040416200 BLDG & GROUND REPAIRS - IT	111,050.68	110,000.00	147,968.44	0.96%	
0.00	4,166.67	1,974.47	-100.00%	5040416300 BLDG & GROUND REPAIRS - IT - NON	9,381.50	45,833.37	17,062.67	-79.53%	
0.00	0.00	0.00	0.00%	5040416400 BLDG & GROUND REPAIRS - G&A - N	879.00	0.00	0.00	100.00%	
0.00	0.00	-632.02	0.00%	5040500001 REVENUE VEHICLE REPAIRS - CORE	-15,891.77	0.00	-37,225.02	-100.00%	
128,418.35	158,333.33	139,044.48	-18.89%	5040504000 REVENUE VEHICLES - REPAIRS	1,419,125.82	1,741,666.63	1,346,928.50	-18.52%	
487.52	2,083.33	1,906.83	-76.60%	5040604000 NON REVENUE VEHICLES - REPAIRS	14,094.62	22,916.63	17,646.40	-38.50%	
4,092.08	4,583.33	2,336.89	-10.72%	5040704000 SERVICE SUPPLIES - MAINT	53,590.31	50,416.63	41,794.56	6.29%	
1,890.36	2,083.33	1,562.93	-9.26%	5040716200 SERVICE SUPPLIES - IT	18,269.67	22,916.63	18,567.16	-20.28%	
664.64	3,333.33	830.40	-80.06%	5040801000 OFFICE SUPPLIES - OPS	13,964.29	36,666.63	16,322.23	-61.92%	
924.94	2,083.33	212.02	-55.60%	5040804000 OFFICE SUPPLIES - MAINT	7,131.16	22,916.63	8,128.17	-68.88%	
1,903.73	1,666.67	453.63	14.22%	5040816000 OFFICE SUPPLIES - G&A	9,194.94	18,333.37	7,352.23	-49.85%	
1,419.72	500.00	58.79	183.94%	5040816200 OFFICE SUPPLIES - IT	3,643.01	5,500.00	3,148.30	-33.76%	
796.65	0.00	885.70	100.00%	5040901000 COMPUTER & SERVER - MISC EXP'S -	10,303.93	0.00	15,105.88	100.00%	
223.00	0.00	34.42	100.00%	5040904000 COMPUTER & SERVER - MISC EXP'S -	10,077.02	0.00	5,013.42	100.00%	
3,373.35	0.00	8,755.56	100.00%	5040916000 COMPUTER & SERVER - MISC EXP'S -	28,748.73	0.00	36,000.69	100.00%	
207.75	0.00	0.00	100.00%	5040916200 COMPUTER & SERVER - MISC EXP'S -	12,718.65	0.00	547.78	100.00%	
0.00	0.00	2,500.00	0.00%	5041001000 SAFETY & TRAINING	2,784.00	0.00	26,709.70	100.00%	
417.00	0.00	0.00	100.00%	5041004000 SAFETY & TRAINING - MAINT	7,917.00	0.00	1,139.99	100.00%	
10,995.72	6,666.67	19,538.20	64.94%	5041104000 PASSENGER SHELTER - REPAIRS	46,361.76	73,333.37	77,213.31	-36.78%	
198.50	3,333.33	111.69	-94.04%	5041201000 SMALL TOOLS & EQUIP - OPS	2,248.82	36,666.63	40,519.35	-93.87%	
2,378.46	3,333.33	4,003.46	-28.65%	5041204000 SMALL TOOLS & EQUIP - MAINT	26,083.25	36,666.63	22,852.91	-28.86%	
0.00	1,666.67	111.69	-100.00%	5041216000 SMALL TOOLS & EQUIP - G&A	32,420.53	18,333.37	7,536.16	76.84%	
7,396.90	1,250.00	4,268.93	491.75%	5041216200 SMALL TOOLS & EQUIP - IT	15,220.18	13,750.00	9,968.80	10.69%	
0.00	0.00	-190.79	0.00%	5041216300 SMALL TOOLS & EQUIP - IT - NON REI	1,275.49	0.00	2,755.82	100.00%	
0.00	0.00	0.00	0.00%	5041216400 SMALL TOOLS & EQUIP - G&A - NON	0.00	0.00	0.00	0.00%	
0.00	0.00	0.00	0.00%	5041304000 FAREBOX REPAIRS	0.00	0.00	0.00	0.00%	
7,387.25	0.00	21,318.83	100.00%	5041404000 CAD/AVL,CAMERA,RADIO REPAIRS -	55,738.23	0.00	68,302.87	100.00%	
3,949.55	0.00	6.15	100.00%	5041504000 ADA VEHICLE - REPAIRS - MAINT	36,995.61	0.00	23,924.34	100.00%	

## Champaign Urbana Mass Transit District Budget Analysis Report

Fiscal Year: 2018		Period 11	Division: 00 Champaign Urbana Mass Transit District				As of: 06/15/2018	
May 2018	Budget This Period	May 2017	Act/Bgt Var %		2018 YTD	July Thru May Budget YTD	2017 YTD	Act/Bgt Var %
374,596.98	448,704.65	365,682.60	-16.52%	5049999900 ** TOTAL MATERIAL & SUPPLIES	3,695,694.20	5,470,440.15	3,485,938.26	-32.44%
29,685.17	25,833.33	21,551.75	14.91%	5050216000 ** UTILITIES - G&A	307,172.34	284,166.63	289,260.45	8.10%
7,901.04	8,750.00	5,220.28	-9.70%	5050216200 ** UTILITIES - IT	70,752.96	96,250.00	69,037.10	-26.49%
3,900.57	2,916.67	2,645.96	33.73%	5050216300 ** UTILITIES - IT - NON REIMB	34,028.05	32,083.37	33,951.40	6.06%
179.58	0.00	0.00	100.00%	5050216400 ** UTILITIES - G&A - NON REIMB	2,127.24	0.00	0.00	100.00%
41,666.36	37,500.00	29,417.99	11.11%	5059999900 **TOTAL UTILITIES	414,080.59	412,500.00	392,248.95	0.38%
				5060000000 ** CASUALTY & LIABILITY COSTS				
4,025.96	4,166.67	3,720.74	-3.38%	5060104000 PHYSICAL DAMAGE PREMIUMS - MAI	45,522.01	45,833.37	43,875.50	-0.68%
0.00	0.00	0.00	0.00%	5060116200 PHYSICAL DAMAGE PREMIUMS - IT	0.00	0.00	0.00	0.00%
-22,526.46	-2,083.33	0.00	981.27%	5060204000 PHYSICAL DAMAGE RECOVERIES - M	-85,746.15	-22,916.63	-43,257.59	274.17%
35,620.48	41,666.67	31,639.31	-14.51%	5060316000 PL & PD INSURANCE PREMIUMS - G&	382,059.20	458,333.37	349,521.21	-16.64%
0.00	0.00	0.00	0.00%	5060316200 PL & PD INSURANCE PREMIUMS - IT	0.00	0.00	0.00	0.00%
41,670.63	41,666.67	38,802.86	0.01%	5060416000 UNINSURED PL & PD PAYOUTS - G&A	440,488.13	458,333.37	414,640.64	-3.89%
2,461.46	0.00	2,274.85	100.00%	5060816000 UNINSURED PL & PD PAYOUTS - G&A	27,076.06	0.00	25,023.35	100.00%
61,252.07	85,416.68	76,437.76	-28.29%	5069999900 ** TOTAL CASUALTY & LIABILITY	809,399.25	939,583.48	789,803.11	-13.86%
				5070000000 ** TAXES				
15,551.28	0.00	-1,759.60	100.00%	5070316000 PROPERTY TAXES	27,487.47	0.00	-1,759.60	100.00%
4,010.06	0.00	0.00	100.00%	5070316400 PROPERTY TAXES - NON-REIMB	5,260.06	0.00	0.00	100.00%
0.00	0.00	1,854.00	0.00%	5070401000 VEHICLE LICENSING FEES - OPS	892.00	0.00	3,710.00	100.00%
0.00	0.00	0.00	0.00%	5070416000 VEHICLE LICENSING FEES - G&A	0.00	0.00	0.00	0.00%
2,629.19	3,750.00	3,361.84	-29.89%	5070501000 FUEL TAX	32,915.53	41,250.00	36,080.02	-20.20%
22,190.53	3,750.00	3,456.24	491.75%	5079999900 ** TOTAL TAXES	66,555.06	41,250.00	38,030.42	61.35%



# Champaign Urbana Mass Transit District

## Budget Analysis Report

Fiscal Year: 2018		Period 11	Division: 00 Champaign Urbana Mass Transit District					As of: 06/15/2018	
May 2018	Budget This Period	May 2017	Act/Bgt Var %		2018 YTD	July Thru May Budget YTD	2017 YTD	Act/Bgt Var %	
5079999999 **** E X P E N S E S ****									
5080100000 ** PURCHASED TRANSPORTATION									
11,123.50	14,583.33	12,614.74	-23.72%	5080116000 CABS	143,817.58	160,416.63	147,156.48	-10.35%	
51,257.58	50,000.00	49,146.83	2.52%	5080216000 ADA CONTRACTS	563,833.38	550,000.00	540,615.13	2.52%	
62,381.08	64,583.33	61,761.57	-3.41%	5089999900 **TOTAL PURCHASED TRANSPORTA	707,650.96	710,416.63	687,771.61	-0.39%	
5090000000 ** MISCELLANEOUS EXPENSES									
10,746.41	6,250.00	4,607.12	71.94%	5090116000 DUES & SUBSCRIPTIONS - G&A	76,247.98	68,750.00	66,251.72	10.91%	
10,183.04	7,333.33	5,331.75	38.86%	5090216000 TRAVEL & MEETINGS - G&A	75,659.80	80,666.63	56,166.65	-6.21%	
0.00	0.00	0.00	0.00%	5090716000 BAD DEBT EXPENSE	0.00	0.00	0.00	0.00%	
23,776.29	16,666.67	9,518.53	42.66%	5090816000 ADVERTISING EXPENSES - G&A	168,359.89	183,333.37	164,800.00	-8.17%	
1,540.00	0.00	0.00	100.00%	5090816200 ADVERTISING EXPENSES - IT	1,540.00	0.00	0.00	100.00%	
-250.00	666.67	0.00	-137.50%	5090916000 TRUSTEE COMPENSATION	4,750.00	7,333.37	2,050.00	-35.23%	
419.11	666.67	1,152.78	-37.13%	5091016000 POSTAGE	4,126.34	7,333.37	4,780.11	-43.73%	
0.00	0.00	0.00	0.00%	5091516000 LOSS/DISPOSAL FIXED ASSETS	0.00	0.00	0.00	0.00%	
0.00	0.00	0.00	0.00%	5091616000 ADVERTISING SERVICES EXPENSE	0.00	0.00	0.00	0.00%	
-1,284.30	0.00	1,890.00	-100.00%	5091716000 SUBSTANCE ABUSE PROGRAM	12,370.10	0.00	20,554.72	100.00%	
4,125.61	1,666.67	437.28	147.54%	5099901000 OTHER MISC EXPENSES - OPS	15,591.87	18,333.37	10,453.67	-14.95%	
661.30	833.33	129.00	-20.64%	5099904000 OTHER MISC EXPENSES - MAINT	8,879.61	9,166.63	4,527.04	-3.13%	
1,849.79	9,083.33	6,306.91	-79.64%	5099916000 OTHER MISC EXPENSES - G&A	28,060.56	99,916.63	44,799.14	-71.92%	
745.64	1,666.67	237.50	-55.26%	5099916200 OTHER MISC EXPENSES - IT	4,823.35	18,333.37	4,617.70	-73.69%	
0.00	416.67	0.00	-100.00%	5099916300 OTHER MISC EXPENSES - IT - NON R	400.00	4,583.37	913.02	-91.27%	
386.05	0.00	5,973.31	100.00%	5099916400 OTHER MISC EXPENSES - G&A - NON	4,999.04	0.00	15,279.11	100.00%	
-6,687.04	0.00	0.00	-100.00%	5099926000 UNALLOCATED EXPENSES	574.27	0.00	0.00	100.00%	
46,211.90	45,250.01	35,584.18	2.13%	5099999900 ** TOTAL MISCELLANEOUS EXPENSE	406,382.81	497,750.11	395,192.88	-18.36%	
5100000000 ** EXPENSE TRANSFERS									
0.00	0.00	0.00	0.00%	5109999900 ** TOTAL EXPENSE TRANSFERS	0.00	0.00	0.00	0.00%	

# Champaign Urbana Mass Transit District

## Budget Analysis Report

Fiscal Year: 2018		Period 11	Division: 00 Champaign Urbana Mass Transit District				As of: 06/15/2018	
May 2018	Budget This Period	May 2017	Act/Bgt Var %		2018 YTD	July Thru May Budget YTD	2017 YTD	Act/Bgt Var %
5109999999 **** E X P E N S E S ***								
5110000000 ** INTEREST EXPENSES								
0.00	0.00	0.00	0.00%	5110116000 INTEREST - LONG-TERM DEBTS	0.00	0.00	0.00	0.00%
11,535.74	0.00	3,919.03	100.00%	5110216000 INTEREST - SHORT-TERM DEBTS	143,719.39	0.00	3,919.03	100.00%
11,535.74	0.00	3,919.03	100.00%	5119999900 ** TOTAL INTEREST	143,719.39	0.00	3,919.03	100.00%
5120000000 ** LEASE & RENTALS								
0.00	12,500.00	0.00	-100.00%	5120401000 PASSENGER REVENUE VEHICLES -	0.00	137,500.00	48,083.40	-100.00%
0.00	1,916.67	978.24	-100.00%	5120516000 SERVICE VEHICLE LEASES	5,869.44	21,083.37	10,760.64	-72.16%
1,919.65	2,333.33	2,168.21	-17.73%	5120704000 GARAGE EQUIPMENT LEASES - MAIN	23,338.86	25,666.63	23,901.70	-9.07%
0.00	0.00	0.00	0.00%	5120901000 RADIO EQUIPMENT LEASES - OPS	0.00	0.00	0.00	0.00%
0.00	0.00	0.00	0.00%	5121216000 G.A. FACILITIES LEASES	0.00	0.00	0.00	0.00%
11,134.52	0.00	9,847.42	100.00%	5121301000 MISCELLANEOUS LEASES - OPS	115,067.42	0.00	84,600.81	100.00%
1,522.95	0.00	0.00	100.00%	5121304000 MISCELLANEOUS LEASES - MAINT	8,030.82	0.00	0.00	100.00%
8,667.12	14,750.00	11,013.15	-41.24%	5121316000 MISCELLANEOUS LEASES - G&A	113,193.72	162,250.00	144,290.38	-30.23%
882.39	0.00	1,839.20	100.00%	5121316200 MISCELLANEOUS LEASES - IT	11,209.89	0.00	19,348.81	100.00%
0.00	0.00	0.00	0.00%	5121316300 MISCELLANEOUS LEASES - IT - NON	0.00	0.00	2,000.00	0.00%
0.00	0.00	0.00	0.00%	5121316400 MISCELLANEOUS LEASES - G&A - NO	0.00	0.00	3,000.00	0.00%
24,126.63	31,500.00	25,846.22	-23.41%	5129999900 ** TOTAL LEASE & RENTALS	276,710.15	346,500.00	335,985.74	-20.14%
5130000000 ** DEPRECIATION								
0.00	0.00	0.00	0.00%	5130201000 PASSENGER SHELTERS DEPR	134,131.11	0.00	0.00	100.00%
0.00	0.00	0.00	0.00%	5130401000 REVENUE VEHICLE DEPRECIATION	3,108,186.24	0.00	0.00	100.00%
0.00	0.00	0.00	0.00%	5130516000 SERVICE VEHICLE DEPRECIATION	35,917.26	0.00	0.00	100.00%
0.00	0.00	0.00	0.00%	5130704000 GARAGE EQUIP. DEPRECIATION - MA	9,308.86	0.00	0.00	100.00%
0.00	0.00	0.00	0.00%	5130901000 REVENUE VEHICLE RADIO EQUIP. DE	32,533.83	0.00	0.00	100.00%
0.00	0.00	0.00	0.00%	5131016000 COMPUTER EQUIPMENT DEPRECIATI	60,074.29	0.00	0.00	100.00%
0.00	0.00	0.00	0.00%	5131116000 REVENUE COLLECTION EQUIPMENT	42,893.06	0.00	0.00	100.00%
0.00	0.00	0.00	0.00%	5131216000 G.A. FACILITIES DEPRECIATION	1,372,342.59	0.00	0.00	100.00%
0.00	0.00	0.00	0.00%	5131316000 G.A. SYSTEM DEV.DEPRECIATION	0.00	0.00	0.00	0.00%
0.00	0.00	0.00	0.00%	5131416000 MISCELLANEOUS EQUIPMENT DEPR	53,133.66	0.00	0.00	100.00%
0.00	0.00	0.00	0.00%	5131516000 OFFICE EQUIPMENT DEPR.	2,095.73	0.00	0.00	100.00%
0.00	0.00	0.00	0.00%	5139999900 ** TOTAL DEPRECIATION	4,850,616.63	0.00	0.00	100.00%

## Champaign Urbana Mass Transit District Budget Analysis Report

Fiscal Year: 2018		Period 11	Division: 00 Champaign Urbana Mass Transit District					As of: 06/15/2018	
May 2018	Budget This Period	May 2017	Act/Bgt Var %			2018 YTD	July Thru May Budget YTD	2017 YTD	Act/Bgt Var %
0.00	0.00	0.00	0.00%	5170116000	DEBT SERVICE ON EQUIPMENT & FA	0.00	0.00	0.00	0.00%
2,284,377.06	3,132,415.00	2,731,763.08	-27.07%	5999990000	**** TOTAL EXPENSES ****	36,397,316.12	35,384,431.00	30,036,350.10	2.86%
1,320,076.80	453,030.00	-2,146,484.23	191.39%	5999999800	NET SURPLUS (DEFICIT)	3,831,510.14	4,756,384.00	13,526,860.30	-19.44%

**Champaign-Urbana Mass Transit District**  
**Accounts Payable Check Disbursement List**  
**BUSEY BANK OPERATING ACCOUNT**

From Date: 05/01/2018

Thru Date: 05/31/2018

Check #	Check Date	Ref #	Name	Total Paid	C-CARTS Portion	MTD Portion	Voided
141472	03-May-18	A4804	ALPHA CONTROLS & SERVICES LLC	\$450.00		\$450.00	
141473	03-May-18	A5085	AMERENIP	\$6,445.67		\$6,445.67	
141474	03-May-18	A5108	AMERICAN DOWELL SIGN CO., INC.	\$534.35		\$534.35	
141475	03-May-18	A6775	GEMA APARICIO	\$214.10		\$214.10	
141476	03-May-18	A7370	ARENDS HOGAN WALKER LLC	\$7.92		\$7.92	
141477	03-May-18	A7910	ASSURITY LIFE INSURANCE	\$638.00		\$638.00	
141478	03-May-18	A8007	AT & T	\$1,304.50		\$1,304.50	
141479	03-May-18	B0483	LINDA A. BAUER	\$150.00		\$150.00	
141480	03-May-18	B3555	BIRKEY'S FARM STORE, INC.	\$1,365.38		\$1,365.38	
141481	03-May-18	B43301	RICHARD W. BARNES	\$100.00		\$100.00	
141482	03-May-18	B4512	RYAN BLACKMAN	\$0.00		\$0.00	X
141483	03-May-18	C0233	** CALIFORNIA STATE DISBURSEMENT UNIT	\$24.00		\$24.00	
141484	03-May-18	C0365	CARLE PHYSICIAN GROUP	\$1,460.70		\$1,460.70	
141484	03-May-18	C0365	CARLE PHYSICIAN GROUP	(\$1,460.70)		(\$1,460.70)	X
141485	03-May-18	C0410	** CAVALRY PORTFOLIO SERVICES, LLC	\$288.96		\$288.96	
141486	03-May-18	C2165	CENTRAL ILLINOIS TRUCKS	\$11,213.42		\$11,213.42	
141487	03-May-18	C3074	MARGARET A. CHAPLAN	\$300.00		\$300.00	
141488	03-May-18	C3105	CHEMICAL MAINTENANCE INC.	\$1,966.64		\$1,966.64	
141489	03-May-18	C3180	MATTHEW CHO	\$100.00		\$100.00	
141490	03-May-18	C4588	CLEAN THE UNIFORM COMPANY HIGHLAND	\$336.73		\$336.73	
141491	03-May-18	C4675	CLIFTONLARSONALLEN LLP	\$6,500.00		\$6,500.00	
141492	03-May-18	C6257	** MARSHA L. COMBS-SKINNER	\$308.31		\$308.31	
141493	03-May-18	C6258	COLUMBIA STREET ROASTERY	\$203.50		\$203.50	
141494	03-May-18	C6263	COMCAST CABLE	\$77.62		\$77.62	
141495	03-May-18	C6686	CONSTELLATION NEWENERGY - GAS DIV. LLC	\$6,539.03		\$6,539.03	
141496	03-May-18	C7363	** CREDITBOX.COM, L.L.C.	\$163.77		\$163.77	
141497	03-May-18	C7422	CRISIS NURSERY	\$65.00		\$65.00	
141498	03-May-18	C8500	CUMMINS CROSSPOINT	\$4,325.27		\$4,325.27	
141499	03-May-18	D0423	DAVE & HARRY LOCKSMITHS	\$2,214.29		\$2,214.29	
141500	03-May-18	D2848	DETAILER'S TRAINING	\$209.85		\$209.85	
141501	03-May-18	D3404	BRADLEY S. DIEL	\$350.00		\$350.00	
141502	03-May-18	D3630	DIXON GRAPHICS	\$171.00		\$171.00	
141503	03-May-18	F0309	JAMES FARON	\$150.00		\$150.00	
141504	03-May-18	F6367	FORD CITY	\$584.73		\$584.73	
141505	03-May-18	G2275	GENERAL TRUCK PARTS	\$750.00		\$750.00	
141506	03-May-18	G3102	GHR ENGINEERS & ASSOCIATES, INC.	\$133.58		\$133.58	
141507	03-May-18	G4290	GLOBAL EQUIPMENT COMPANY	\$1,499.06		\$1,499.06	
141508	03-May-18	G6300	GOODYEAR TIRE & RUBBER CO	\$12,328.31		\$12,328.31	
141509	03-May-18	H0300	BRUCE M. HANNON	\$50.00		\$50.00	
141510	03-May-18	H6115	MIKE HOFFMANN	\$4,000.00		\$4,000.00	
141511	03-May-18	I0025	** VANTAGEPOINT TRANSFER AGENTS - 301281	\$24,881.95		\$24,881.95	
141512	03-May-18	I1595	IDENTISYS INCORPORATED	\$446.27		\$446.27	
141513	03-May-18	I4747	ILLINI FS, INC.	\$16,486.18		\$16,486.18	
141514	03-May-18	I4790	ILLINOIS-AMERICAN WATER	\$1,822.77		\$1,822.77	
141515	03-May-18	I4828	ILLINOIS HOME PAGE	\$400.00		\$400.00	
141516	03-May-18	I4879	IL PUBLIC TRANSIT RISK MANAGEMENT ASOC	\$388.59		\$388.59	
141517	03-May-18	I5758	INIT INC.	\$224,981.19		\$224,981.19	
141518	03-May-18	I8235	I3 BROADBAND - CU	\$227.99		\$227.99	
141519	03-May-18	J0320	JANITOR & MAINTENANCE SUPPLIES, INC.	\$208.05		\$208.05	
141520	03-May-18	J6133	ANDREW JOHNSON	\$1,794.11		\$1,794.11	
141521	03-May-18	K2190	KEN'S OIL SERVICE, INC.	\$16,421.97		\$16,421.97	
141522	03-May-18	L3511	LIQUID WASTE REMOVAL, INC.	\$245.75		\$245.75	
141523	03-May-18	M0377	MARTIN ONE SOURCE	\$124.00		\$124.00	
141524	03-May-18	M1246	MCMASTER-CARR SUPPLY CO.	\$337.48		\$337.48	
141525	03-May-18	M2179	MENARD'S	\$302.53		\$302.53	
141526	03-May-18	M8518	MUNCIE RECLAMATION-SUPPLY	\$1,500.16		\$1,500.16	
141527	03-May-18	N0320	NAPA AUTO PARTS	\$2,494.59		\$2,494.59	
141528	03-May-18	N0350	KENNETH L. NAPPER	\$160.00		\$160.00	
141529	03-May-18	N0387	NATIONAL COATINGS & SUPPLIES	\$46.14		\$46.14	
141530	03-May-18	N2292	THE AFTERMARKET PARTS COMPANY, LLC.	\$2,738.44		\$2,738.44	
141531	03-May-18	N9686	** NYS CHILD SUPPORT PROCESSING CENTER	\$60.00		\$60.00	
141532	03-May-18	O4590	LISA OLSEN	\$120.00		\$120.00	
141533	03-May-18	P2253	TRACEY PETTIGREW	\$54.66		\$54.66	

**Champaign-Urbana Mass Transit District**  
**Accounts Payable Check Disbursement List**  
**BUSEY BANK OPERATING ACCOUNT**

From Date: 05/01/2018

Thru Date: 05/31/2018

Check #	Check Date	Ref #	Name	Total Paid	C-CARTS Portion	MTD Portion	Voided
141534	03-May-18	P2256	PETTY CASH (CHANGE FUND)	\$98.00		\$98.00	
141535	03-May-18	P4521	CYNTHIA HOYLE	\$7,995.00		\$7,995.00	
141536	03-May-18	R2175	RELIABLE PLUMBING & HEATING COMPANY	\$124.80		\$124.80	
141537	03-May-18	S0060	SAFEWORKS ILLINOIS	\$185.00		\$185.00	
141538	03-May-18	S0078	SAFETY-KLEEN CORP.	\$848.96		\$848.96	
141539	03-May-18	S0260	SAMMY'S AUTO ELECTRIC	\$2,950.00		\$2,950.00	
141540	03-May-18	S3100	SHI INTERNATIONAL CORP.	\$53.88		\$53.88	
141541	03-May-18	S3115	DANIEL J. HARTMAN	\$1,649.28		\$1,649.28	
141542	03-May-18	S5192	S.J. SMITH WELDING SUPPLY	\$15.00		\$15.00	
141543	03-May-18	T0007	TJ'S LAUNDRY & DRY CLEANING	\$110.50		\$110.50	
141544	03-May-18	T2205	TEPPER ELECTRIC SUPPLY CO	\$77.00		\$77.00	
141545	03-May-18	T2225	TERMINAL SUPPLY COMPANY	\$144.80		\$144.80	
141546	03-May-18	T3063	THERMO KING MIDWEST, INC.	\$742.03		\$742.03	
141547	03-May-18	T7510	TROPHYTIME	\$67.55		\$67.55	
141548	03-May-18	T7590	TRUCK CENTERS, INC.	\$1,014.11		\$1,014.11	
141549	03-May-18	U5421	DON UCHTMANN	\$50.00		\$50.00	
141550	03-May-18	U7357	CITY OF URBANA	\$3,373.00		\$3,373.00	
141551	03-May-18	U7359	** URBANA MUNICIPAL EMPL. CREDIT UNION	\$45,930.74		\$45,930.74	
141552	03-May-18	U7385	URBANA TRUE TIRES	\$161.68		\$161.68	
141553	03-May-18	W2157	WELLER TRUCK PARTS	\$4,496.80		\$4,496.80	
141554	03-May-18	W3123	WHITSITT & ASSOCIATES, INC.	\$2,600.00		\$2,600.00	
141555	03-May-18	W3126	TODD WHITT	\$120.00		\$120.00	
141556	03-May-18	S6666	RANDSTAD NORTH AMERICA, L.P.	\$1,045.28		\$1,045.28	
141557	04-May-18	M3375	MID ILLINOIS DEVELOPMENT, LLC	\$8,500.00		\$8,500.00	
141558	04-May-18	U5998	UNIVERSITY OF ILLINOIS	\$11,797.33		\$11,797.33	
141559	10-May-18	A0865	ABSOPURE WATER COMPANY	\$46.50		\$46.50	
141560	10-May-18	A1934	ADVANCE AUTO PARTS	\$213.16		\$213.16	
141561	10-May-18	A4804	ALPHA CONTROLS & SERVICES LLC	\$420.00		\$420.00	
141562	10-May-18	A7324	PDC/AREA COMPANIES	\$414.60		\$414.60	
141563	10-May-18	A7545	ARROW GLASS COMPANY	\$422.80		\$422.80	
141564	10-May-18	A7910	ASSURITY LIFE INSURANCE	\$286.35		\$286.35	
141565	10-May-18	A8007	AT & T	\$84.27		\$84.27	
141566	10-May-18	A8011	AT&T MOBILITY-CC	\$104.20		\$104.20	
141567	10-May-18	A8155	ATLAS CAB	\$3,766.50		\$3,766.50	
141568	10-May-18	A9010	AWARDS LTD.	\$18.10		\$18.10	
141569	10-May-18	B0427	BARBECK COMMUNICATION	\$284.76		\$284.76	
141570	10-May-18	B3555	BIRKEY'S FARM STORE, INC.	\$1,074.02		\$1,074.02	
141571	10-May-18	B4512	RYAN BLACKMAN	\$25.00		\$25.00	
141572	10-May-18	C0364	CARLE PHYSICIAN GROUP	\$2,888.00		\$2,888.00	
141573	10-May-18	C1560	CDC PAPER & JANITOR	\$543.26		\$543.26	
141574	10-May-18	C2159	CENTRAL STATES BUS SALES, INC.	\$1,267.36		\$1,267.36	
141575	10-May-18	C2165	CENTRAL ILLINOIS TRUCKS	\$2,480.76		\$2,480.76	
141576	10-May-18	C3100	CHELSEA FINANCIAL GROUP, LTD.	\$12,683.05		\$12,683.05	
141577	10-May-18	C4511	CLARKE POWER SERVICES, INC.	\$189.60		\$189.60	
141578	10-May-18	C4585	CLEAN EXHAUST SPECIALIST LLC	\$720.00		\$720.00	
141579	10-May-18	C4588	CLEAN THE UNIFORM COMPANY HIGHLAND	\$429.73		\$429.73	
141580	10-May-18	C6259	COMMERCE BANK	\$7,261.31		\$7,261.31	
141581	10-May-18	C6263	COMCAST CABLE	\$117.80		\$117.80	
141582	10-May-18	C6285	THOMAS C. CONRAD	\$40.00		\$40.00	
141583	10-May-18	D0426	DAVIS-HOUK MECHANICAL, INC	\$4,845.57		\$4,845.57	
141584	10-May-18	D2848	DETAILER'S TRAINING	\$139.90		\$139.90	
141585	10-May-18	D2850	DEVELOPMENTAL SERVICES	\$39,460.25		\$39,460.25	
141586	10-May-18	D3630	DIXON GRAPHICS	\$1,066.96		\$1,066.96	
141587	10-May-18	D8587	DUST & SON OF CHAMPAIGN COUNTY, INC	\$137.16		\$137.16	
141588	10-May-18	E0351	E.L. PRUITT COMPANY	\$313.00		\$313.00	
141589	10-May-18	E7915	ETC INSTITUTE	\$7,180.00		\$7,180.00	
141590	10-May-18	F0305	FARM & FLEET	\$116.64		\$116.64	
141591	10-May-18	F0367	FASTENERS ETC., INC.	\$161.88		\$161.88	
141592	10-May-18	F6367	FORD CITY	\$794.02		\$794.02	
141593	10-May-18	F6404	4IMPRINT, INC.	\$2,497.72		\$2,497.72	
141594	10-May-18	F6414	RANDAL FOUTS	\$40.00		\$40.00	
141595	10-May-18	G3484	GILLIG LLC	\$2,473.00		\$2,473.00	
141596	10-May-18	G4293	GLOBAL TECHNICAL SYSTEMS, INC.	\$1,576.00		\$1,576.00	

**Champaign-Urbana Mass Transit District**  
**Accounts Payable Check Disbursement List**  
**BUSEY BANK OPERATING ACCOUNT**

From Date: 05/01/2018

Thru Date: 05/31/2018

Check #	Check Date	Ref #	Name	Total Paid	C-CARTS Portion	MTD Portion	Voided
141597	10-May-18	G6445	GOVCONNECTION, INC	\$183.58		\$183.58	
141598	10-May-18	H3564	HIRERIGHT SOLUTIONS INC.	\$1,305.09		\$1,305.09	
141599	10-May-18	I5758	INIT INC.	\$175.00		\$175.00	
141600	10-May-18	I5904	INTERSTATE BATTERIES	\$215.90		\$215.90	
141601	10-May-18	I8235	I3 BROADBAND - CU	\$227.99		\$227.99	
141602	10-May-18	J0310	JANEK CORPORATION	\$1,240.00		\$1,240.00	
141603	10-May-18	J0320	JANITOR & MAINTENANCE SUPPLIES, INC.	\$236.85		\$236.85	
141604	10-May-18	J6152	LYNN E. JOHNSON	\$76.45		\$76.45	
141605	10-May-18	K2190	KEN'S OIL SERVICE, INC.	\$33,543.07		\$33,543.07	
141606	10-May-18	L3350	LAWRENCE LI, MD	\$1,245.18		\$1,245.18	
141607	10-May-18	L3395	LIFE FITNESS	\$311.76		\$311.76	
141608	10-May-18	L3504	THE LINCOLN NATIONAL LIFE INSURANCE CO.	\$2,610.36		\$2,610.36	
141609	10-May-18	L6446	LOWE'S	\$195.95		\$195.95	
141610	10-May-18	L9660	MORGAN J. LYONS	\$622.47		\$622.47	
141611	10-May-18	M0377	MARTIN ONE SOURCE	\$167.20		\$167.20	
141612	10-May-18	M1090	MCCORMICK DISTRIBUTION & SERVICE	\$201.65		\$201.65	
141613	10-May-18	M1246	MCMaster-CARR SUPPLY CO.	\$435.42		\$435.42	
141614	10-May-18	M2114	LISA MEID	\$200.00		\$200.00	
141615	10-May-18	M2179	MENARD'S	\$370.26		\$370.26	
141616	10-May-18	M2310	MEYER CAPEL	\$360.00		\$360.00	
141617	10-May-18	M3408	MIDWEST TRANSIT EQUIPMENT, INC.	\$2,632.30		\$2,632.30	
141618	10-May-18	M6162	MOHAWK MFG. & SUPPLY CO.	\$295.16		\$295.16	
141619	10-May-18	M8518	MUNCIE RECLAMATION-SUPPLY	\$1,648.96		\$1,648.96	
141620	10-May-18	M9548	MYERS TIRE SUPPLY	\$487.16		\$487.16	
141621	10-May-18	N0320	NAPA AUTO PARTS	\$505.05		\$505.05	
141622	10-May-18	N2292	THE AFTERMARKET PARTS COMPANY, LLC.	\$0.00		\$0.00	X
141623	10-May-18	N2292	THE AFTERMARKET PARTS COMPANY, LLC.	\$0.00		\$0.00	X
141624	10-May-18	N2292	THE AFTERMARKET PARTS COMPANY, LLC.	\$0.00		\$0.00	X
141625	10-May-18	N2292	THE AFTERMARKET PARTS COMPANY, LLC.	\$0.00		\$0.00	X
141626	10-May-18	N2292	THE AFTERMARKET PARTS COMPANY, LLC.	\$40,870.39		\$40,870.39	
141627	10-May-18	O7450	ORKIN EXTERMINATING CO.	\$702.53		\$702.53	
141628	10-May-18	P2180	PENNELLS FORKLIFT SERVICE, INC.	\$110.41		\$110.41	
141629	10-May-18	P2226	PERSONAL MOBILITY	\$595.00		\$595.00	
141630	10-May-18	Q8455	QUILL	\$123.35		\$123.35	
141631	10-May-18	R2015	REPUBLIC SERVICES	\$1,251.72		\$1,251.72	
141632	10-May-18	R6120	ROGARDS OFFICE PRODUCTS	\$208.87		\$208.87	
141633	10-May-18	R6384	CHISTOPIAN SERVICES, INC.	\$388.00		\$388.00	
141634	10-May-18	S0078	SAFETY-KLEEN CORP.	\$417.48		\$417.48	
141635	10-May-18	S0254	SAM'S CLUB	\$233.62		\$233.62	
141636	10-May-18	S2020	DONAVYN L. SEAY	\$40.00		\$40.00	
141637	10-May-18	S3086	SHERWIN-WILLIAMS	\$768.90		\$768.90	
141638	10-May-18	S5191	STUART SMITH	\$80.00		\$80.00	
141639	10-May-18	S5192	S.J. SMITH WELDING SUPPLY	\$75.60		\$75.60	
141640	10-May-18	S6666	RANDSTAD NORTH AMERICA, L.P.	\$739.20		\$739.20	
141641	10-May-18	S6962	SPX CORPORATION	\$327.46		\$327.46	
141642	10-May-18	T2205	TEPPER ELECTRIC SUPPLY CO	\$985.05		\$985.05	
141643	10-May-18	T2225	TERMINAL SUPPLY COMPANY	\$280.62		\$280.62	
141644	10-May-18	T3063	THERMO KING MIDWEST, INC.	\$529.58		\$529.58	
141645	10-May-18	T3190	THOMAS, MAMER & HAUGHEY	\$826.50		\$826.50	
141646	10-May-18	T7594	TRUCK TRENDS, INC.	\$1,889.94		\$1,889.94	
141647	10-May-18	U5180	UNITED PARCEL SERVICE	\$45.02		\$45.02	
141648	10-May-18	U5996	UNIVERSITY OF ILLINOIS	\$439.50		\$439.50	
141649	10-May-18	U60295	ULINE	\$84.23		\$84.23	
141650	10-May-18	U7653	US BANK VENDOR SERVICES	\$2,743.31		\$2,743.31	
141651	10-May-18	V2233	VERIZON WIRELESS	\$614.07		\$614.07	
141652	10-May-18	W3485	CHARLES A. WILSON	\$120.00		\$120.00	
141653	10-May-18	Y2150	YELLOW TRANSPORT, LTD.	\$8,611.00		\$8,611.00	
141654	10-May-18	Z2333	ZF SERVICES NORTH AMERICA, LLC	\$364.65		\$364.65	
141655	10-May-18	C2172	CMS/LGHP	\$380,558.00		\$380,558.00	
141656	10-May-18	L3350	LAWRENCE LI, MD	\$1,983.23		\$1,983.23	
141657	10-May-18	O7560	ORTHO WORKS SC	\$1,489.23		\$1,489.23	
141658	17-May-18	A0865	ABSOPURE WATER COMPANY	\$9.00		\$9.00	
141659	17-May-18	A1934	ADVANCE AUTO PARTS	\$215.59		\$215.59	

**Champaign-Urbana Mass Transit District**  
**Accounts Payable Check Disbursement List**  
**BUSEY BANK OPERATING ACCOUNT**

From Date: 05/01/2018

Thru Date: 05/31/2018

Check #	Check Date	Ref #	Name	Total Paid	C-CARTS Portion	MTD Portion	Voided
141660	17-May-18	A5085	AMERENIP	\$0.00		\$0.00	X
141661	17-May-18	A5085	AMERENIP	\$12,248.91		\$12,248.91	
141662	17-May-18	A7324	PDC/AREA COMPANIES	\$24.28		\$24.28	
141663	17-May-18	B0433	DREW BARGMANN	\$1,281.91		\$1,281.91	
141664	17-May-18	B2230	BERNS, CLANCY & ASSOC. PC	\$3,640.63		\$3,640.63	
141665	17-May-18	B3555	BIRKEY'S FARM STORE, INC.	\$769.24		\$769.24	
141666	17-May-18	B4510	BLACK & COMPANY	\$131.46		\$131.46	
141667	17-May-18	B4516	BLAKE SALES	\$360.63		\$360.63	
141668	17-May-18	B4910	JASON BLUNIER	\$40.00		\$40.00	
141669	17-May-18	B7464	ERIC M. BROGA	\$968.97		\$968.97	
141670	17-May-18	B8500	BUMPER TO BUMPER	\$261.90		\$261.90	
141671	17-May-18	C0233	** CALIFORNIA STATE DISBURSEMENT UNIT	\$48.00		\$48.00	
141672	17-May-18	C0410	** CAVALRY PORTFOLIO SERVICES, LLC	\$286.27		\$286.27	
141673	17-May-18	C1136	CCG, INC.	\$116.90		\$116.90	
141674	17-May-18	C2165	CENTRAL ILLINOIS TRUCKS	\$0.00		\$0.00	X
141675	17-May-18	C2165	CENTRAL ILLINOIS TRUCKS	\$10,585.51		\$10,585.51	
141676	17-May-18	C3045	CITY OF CHAMPAIGN	\$95.00		\$95.00	
141677	17-May-18	C3069	CHAMPAIGN CO. GIS CONSORTIUM	\$5,300.00		\$5,300.00	
141678	17-May-18	C3105	CHEMICAL MAINTENANCE INC.	\$498.00		\$498.00	
141679	17-May-18	C3512	CINTAS FIRST AID & SAFETY	\$56.68		\$56.68	
141680	17-May-18	C4511	CLARKE POWER SERVICES, INC.	\$1,548.39		\$1,548.39	
141681	17-May-18	C4588	CLEAN THE UNIFORM COMPANY HIGHLAND	\$373.81		\$373.81	
141682	17-May-18	C4675	CLIFTONLARSONALLEN LLP	\$10,751.25		\$10,751.25	
141683	17-May-18	C6257	** MARSHA L. COMBS-SKINNER	\$599.07		\$599.07	
141684	17-May-18	C6258	COLUMBIA STREET ROASTERY	\$336.25		\$336.25	
141685	17-May-18	C6263	COMCAST CABLE	\$368.42		\$368.42	
141686	17-May-18	C6284	CONSOLIDATED COMMUNICATIONS ENTERPRISE S	\$90.00		\$90.00	
141687	17-May-18	C6685	CONSTELLATION NEWENERGY, INC.	\$13,209.58		\$13,209.58	
141688	17-May-18	C7363	** CREDITBOX.COM, L.L.C.	\$172.51		\$172.51	
141689	17-May-18	D0426	DAVIS-HOUK MECHANICAL, INC	\$453.79		\$453.79	
141690	17-May-18	D2023	** DECATUR ACCEPTANCE CORP	\$18.10		\$18.10	
141691	17-May-18	D2942	DEX	\$246.27		\$246.27	
141692	17-May-18	D3590	DISH PASSIONATE CUISINE	\$299.00		\$299.00	
141693	17-May-18	D3630	DIXON GRAPHICS	\$150.00		\$150.00	
141694	17-May-18	D8587	DUST & SON OF CHAMPAIGN COUNTY, INC	\$0.00		\$0.00	X
141695	17-May-18	D8587	DUST & SON OF CHAMPAIGN COUNTY, INC	\$1,009.65		\$1,009.65	
141696	17-May-18	E3390	EIGHT 22, LLC	\$1,450.00		\$1,450.00	
141697	17-May-18	E3393	BRENDA EILBRACHT	\$40.00		\$40.00	
141698	17-May-18	E7915	ETC INSTITUTE	\$2,785.00		\$2,785.00	
141699	17-May-18	F0365	FASTENAL COMPANY	\$675.90		\$675.90	
141700	17-May-18	F0367	FASTENERS ETC., INC.	\$5.00		\$5.00	
141701	17-May-18	F6367	FORD CITY	\$1,047.51		\$1,047.51	
141702	17-May-18	F6404	4IMPRINT, INC.	\$2,396.99		\$2,396.99	
141703	17-May-18	G0300	EDGAR A. GARCIA-PAYANO	\$125.00		\$125.00	
141704	17-May-18	G0350	QUINTON GARRETT	\$164.37		\$164.37	
141705	17-May-18	G2275	GENERAL TRUCK PARTS	\$750.00		\$750.00	
141706	17-May-18	G3484	GILLIG LLC	\$231.34		\$231.34	
141707	17-May-18	G6290	ANNETTE GOODRICH	\$52.92		\$52.92	
141708	17-May-18	G7375	GRIMCO, INC	\$836.78		\$836.78	
141709	17-May-18	H2235	HERITAGE PETROLEUM, LLC	\$30,909.06		\$30,909.06	
141710	17-May-18	I0025	** VANTAGEPOINT TRANSFER AGENTS - 301281	\$24,897.81		\$24,897.81	
141711	17-May-18	I4747	ILLINI FS, INC.	\$196.00		\$196.00	
141712	17-May-18	I4828	ILLINOIS HOME PAGE	\$400.00		\$400.00	
141713	17-May-18	I5800	MIKE BIALESCHKI	\$1,604.27		\$1,604.27	
141714	17-May-18	I5904	INTERSTATE BATTERIES	\$235.90		\$235.90	
141715	17-May-18	J0320	JANITOR & MAINTENANCE SUPPLIES, INC.	\$282.68		\$282.68	
141716	17-May-18	K2190	KEN'S OIL SERVICE, INC.	\$17,711.16		\$17,711.16	
141717	17-May-18	K3461	JAN M. KJOWSKI	\$40.00		\$40.00	
141718	17-May-18	L0440	LAWSON PRODUCTS, INC.	\$468.40		\$468.40	
141719	17-May-18	L2270	LETTER PUBLICATIONS	\$349.00		\$349.00	
141720	17-May-18	L9642	LYNN A. UMBARGER	\$670.00		\$670.00	
141721	17-May-18	M0377	MARTIN ONE SOURCE	\$505.00		\$505.00	
141722	17-May-18	M1246	MCMASTER-CARR SUPPLY CO.	\$115.60		\$115.60	

**Champaign-Urbana Mass Transit District**  
**Accounts Payable Check Disbursement List**  
**BUSEY BANK OPERATING ACCOUNT**

From Date: 05/01/2018

Thru Date: 05/31/2018

Check #	Check Date	Ref #	Name	Total Paid	C-CARTS Portion	MTD Portion	Voided
141723	17-May-18	M1269	MCS OFFICE TECHNOLOGIES	\$1,526.00		\$1,526.00	
141724	17-May-18	M2114	LISA MEID	\$39.86		\$39.86	
141725	17-May-18	M2179	MENARD'S	\$219.13		\$219.13	
141726	17-May-18	M3015	MH EQUIPMENT COMPANY	\$1,449.78		\$1,449.78	
141727	17-May-18	M3408	MIDWEST TRANSIT EQUIPMENT, INC.	\$25.40		\$25.40	
141728	17-May-18	M8518	MUNCIE RECLAMATION-SUPPLY	\$431.20		\$431.20	
141729	17-May-18	M9570	CFM INTERNATIONAL	\$737.00		\$737.00	
141730	17-May-18	N0320	NAPA AUTO PARTS	\$522.88		\$522.88	
141731	17-May-18	N2292	THE AFTERMARKET PARTS COMPANY, LLC.	\$1,730.74		\$1,730.74	
141732	17-May-18	N9686	** NYS CHILD SUPPORT PROCESSING CENTER	\$60.00		\$60.00	
141733	17-May-18	P2256	PETTY CASH (CHANGE FUND)	\$196.00		\$196.00	
141734	17-May-18	P2258	PETTY CASH (WELLNESS)	\$0.00		\$0.00	X
141735	17-May-18	P4522	SHERRY HELFER	\$428.83		\$428.83	
141736	17-May-18	P7367	PREMIER PRINT GROUP	\$710.00		\$710.00	
141737	17-May-18	Q8455	QUILL	\$30.99		\$30.99	
141738	17-May-18	R0272	JOSEPH S. RANK	\$144.50		\$144.50	
141739	17-May-18	R0435	RATIO ARCHITECTS, INC.	\$4,500.00		\$4,500.00	
141740	17-May-18	R2133	CHARLES L GREENWOLD	\$4,185.00		\$4,185.00	
141741	17-May-18	R2320	REYNOLDS TOWING SERVICE	\$292.50		\$292.50	
141742	17-May-18	R3488	RILCO OF PEORIA, INC.	\$10,949.03		\$10,949.03	
141743	17-May-18	R6120	ROGARDS OFFICE PRODUCTS	\$946.50		\$946.50	
141744	17-May-18	S0060	SAFEWORKS ILLINOIS	\$730.00		\$730.00	
141745	17-May-18	S3006	ADAM C. SHANKS	\$148.66		\$148.66	
141746	17-May-18	S3100	SHI INTERNATIONAL CORP.	\$1,676.14		\$1,676.14	
141747	17-May-18	S3187	SHOE CARNIVAL, INC.	\$25.00		\$25.00	
141748	17-May-18	S5192	S.J. SMITH WELDING SUPPLY	\$25.80		\$25.80	
141749	17-May-18	S5981	AMY L. SNYDER	\$1,128.89		\$1,128.89	
141750	17-May-18	S8027	STATE FIRE MARSHALL	\$400.00		\$400.00	
141751	17-May-18	T0007	TJ'S LAUNDRY & DRY CLEANING	\$220.25		\$220.25	
141752	17-May-18	T2205	TEPPER ELECTRIC SUPPLY CO	\$420.08		\$420.08	
141753	17-May-18	T2225	TERMINAL SUPPLY COMPANY	\$68.40		\$68.40	
141754	17-May-18	T7510	TROPHYTIME	\$28.95		\$28.95	
141755	17-May-18	T7590	TRUCK CENTERS, INC.	\$66.18		\$66.18	
141756	17-May-18	U5180	UNITED PARCEL SERVICE	\$25.23		\$25.23	
141757	17-May-18	U7355	U-C SANITARY DISTRICT	\$316.27		\$316.27	
141758	17-May-18	U7359	** URBANA MUNICIPAL EMPL. CREDIT UNION	\$44,523.35		\$44,523.35	
141759	17-May-18	U7385	URBANA TRUE TIRES	\$2,961.57		\$2,961.57	
141760	17-May-18	W0003	WCIA-CHANNEL 3	\$1,835.00		\$1,835.00	
141761	17-May-18	W0005	WDWS/WHMS/WUIL RADIO	\$455.00		\$455.00	
141762	17-May-18	W3455	UIF/WILL	\$470.00		\$470.00	
141763	17-May-18	P2258	PETTY CASH (WELLNESS)	\$1,250.00		\$1,250.00	
141764	24-May-18	A4702	ALL AMERICAN AIR FILTERS, INC.	\$517.60		\$517.60	
141765	24-May-18	A5085	AMERENIP	\$37.14		\$37.14	
141766	24-May-18	A7370	ARENDS HOGAN WALKER LLC	\$473.06		\$473.06	
141767	24-May-18	A7545	ARROW GLASS COMPANY	\$466.64		\$466.64	
141768	24-May-18	A7910	ASSURITY LIFE INSURANCE	\$228.18		\$228.18	
141769	24-May-18	A8007	AT & T	\$320.02		\$320.02	
141770	24-May-18	B0427	BARBECK COMMUNICATION	\$58.87		\$58.87	
141771	24-May-18	B3555	BIRKEY'S FARM STORE, INC.	\$1,568.25		\$1,568.25	
141772	24-May-18	B7325	BRASCO INTERNATIONAL, INC.	\$10,125.00		\$10,125.00	
141773	24-May-18	B8500	BUMPER TO BUMPER	\$107.85		\$107.85	
141774	24-May-18	C1560	CDC PAPER & JANITOR	\$6,770.11		\$6,770.11	
141775	24-May-18	C2165	CENTRAL ILLINOIS TRUCKS	\$0.00		\$0.00	X
141776	24-May-18	C2165	CENTRAL ILLINOIS TRUCKS	\$9,445.49		\$9,445.49	
141777	24-May-18	C2231	CERTIFIED LABORATORIES	\$118.28		\$118.28	
141778	24-May-18	C3043	CHAMPAIGN CENTER PARTNERSHIP	\$500.00		\$500.00	
141779	24-May-18	C3051	CHAMPAIGN CO. COLLECTOR	\$9,024.42		\$9,024.42	
141780	24-May-18	C4588	CLEAN THE UNIFORM COMPANY HIGHLAND	\$380.24		\$380.24	
141781	24-May-18	C6271	COMP MC	\$0.00		\$0.00	X
141782	24-May-18	C6290	CONG CONG	\$755.00		\$755.00	
141783	24-May-18	C6685	CONSTELLATION NEWENERGY, INC.	\$2,849.11		\$2,849.11	
141784	24-May-18	C8500	CUMMINS CROSSPOINT	\$538.74		\$538.74	
141785	24-May-18	D3225	DH PACE COMPANY, INC.	\$167.00		\$167.00	



**Champaign-Urbana Mass Transit District**  
**Accounts Payable Check Disbursement List**  
**BUSEY BANK OPERATING ACCOUNT**

From Date: 05/01/2018

Thru Date: 05/31/2018

Check #	Check Date	Ref #	Name	Total Paid	C-CARTS Portion	MTD Portion	Voided
141786	24-May-18	D8587	DUST & SON OF CHAMPAIGN COUNTY, INC	\$408.16		\$408.16	
141787	24-May-18	E0350	E-CONOLIGHT LLC	\$4,819.78		\$4,819.78	
141788	24-May-18	E0351	E.L. PRUITT COMPANY	\$1,396.00		\$1,396.00	
141789	24-May-18	E4733	STEVEN F. ELLIS	\$40.00		\$40.00	
141790	24-May-18	F03081	FARNSWORTH GROUP, INC.	\$14,404.75		\$14,404.75	
141791	24-May-18	F2013	F.E. MORAN, INC.	\$181.50		\$181.50	
141792	24-May-18	F2055	FEDERAL EXPRESS CORP.	\$97.36		\$97.36	
141793	24-May-18	F6332	DAVID L. FOOTE	\$2,000.00		\$2,000.00	
141794	24-May-18	F6367	FORD CITY	\$134.49		\$134.49	
141795	24-May-18	G2275	GENERAL TRUCK PARTS	\$6,241.80		\$6,241.80	
141796	24-May-18	G2282	ADAM GENTILE	\$32.27		\$32.27	
141797	24-May-18	G3484	GILLIG LLC	\$3,847.68		\$3,847.68	
141798	24-May-18	G6445	GOVCONNECTION, INC	\$677.75		\$677.75	
141799	24-May-18	H2235	HERITAGE PETROLEUM, LLC	\$16,820.54		\$16,820.54	
141800	24-May-18	I1595	IDENTISYS INCORPORATED	\$480.55		\$480.55	
141801	24-May-18	I4790	ILLINOIS-AMERICAN WATER	\$57.67		\$57.67	
141802	24-May-18	I5904	INTERSTATE BATTERIES	\$103.95		\$103.95	
141803	24-May-18	I8235	I3 BROADBAND - CU	\$47,805.13		\$47,805.13	
141804	24-May-18	J0320	JANITOR & MAINTENANCE SUPPLIES, INC.	\$66.55		\$66.55	
141805	24-May-18	M0377	MARTIN ONE SOURCE	\$235.00		\$235.00	
141806	24-May-18	M2114	LISA MEID	\$27.98		\$27.98	
141807	24-May-18	M2149	MESIROW INSURANCE SERVICES, INC.	\$6,337.00		\$6,337.00	
141808	24-May-18	M2179	MENARD'S	\$407.10		\$407.10	
141809	24-May-18	M3408	MIDWEST TRANSIT EQUIPMENT, INC.	\$512.10		\$512.10	
141810	24-May-18	M6162	MOHAWK MFG. & SUPPLY CO.	\$247.48		\$247.48	
141811	24-May-18	M8518	MUNCIE RECLAMATION-SUPPLY	\$2,600.73		\$2,600.73	
141812	24-May-18	N0320	NAPA AUTO PARTS	\$472.28		\$472.28	
141813	24-May-18	N2292	THE AFTERMARKET PARTS COMPANY, LLC.	\$0.00		\$0.00	X
141814	24-May-18	N2292	THE AFTERMARKET PARTS COMPANY, LLC.	\$0.00		\$0.00	X
141815	24-May-18	N2292	THE AFTERMARKET PARTS COMPANY, LLC.	\$22,455.46		\$22,455.46	
141816	24-May-18	P2256	PETTY CASH (CHANGE FUND)	\$98.00		\$98.00	
141817	24-May-18	Q8455	QUILL	\$49.18		\$49.18	
141818	24-May-18	R2320	REYNOLDS TOWING SERVICE	\$220.00		\$220.00	
141819	24-May-18	R6120	ROGARDS OFFICE PRODUCTS	\$84.20		\$84.20	
141820	24-May-18	R6375	ROSS & WHITE COMPANY	\$1,294.12		\$1,294.12	
141821	24-May-18	R6482	MICHAEL JOSEPH ROYSE	\$2,250.00		\$2,250.00	
141822	24-May-18	S0078	SAFETY-KLEEN CORP.	\$667.26		\$667.26	
141823	24-May-18	S3500	SIMPLIFIED COMPUTERS	\$65.00		\$65.00	
141824	24-May-18	S4700	SLEC	\$2,755.10		\$2,755.10	
141825	24-May-18	S5192	S.J. SMITH WELDING SUPPLY	\$74.40		\$74.40	
141826	24-May-18	S8135	ROBERT W. STICKELS	\$40.00		\$40.00	
141827	24-May-18	S8506	JANE M. SULLIVAN	\$511.89		\$511.89	
141828	24-May-18	T2205	TEPPER ELECTRIC SUPPLY CO	\$239.76		\$239.76	
141829	24-May-18	T2225	TERMINAL SUPPLY COMPANY	\$149.40		\$149.40	
141830	24-May-18	T3063	THERMO KING MIDWEST, INC.	\$162.00		\$162.00	
141831	24-May-18	T7510	TROPHYTIME	\$28.95		\$28.95	
141832	24-May-18	T7585	TRUGREEN CHEMLAWN	\$285.20		\$285.20	
141833	24-May-18	T7590	TRUCK CENTERS, INC.	\$637.85		\$637.85	
141834	24-May-18	U5180	UNITED PARCEL SERVICE	\$54.17		\$54.17	
141835	24-May-18	U60295	ULINE	\$211.79		\$211.79	
141836	24-May-18	U7385	URBANA TRUE TIRES	\$1,616.80		\$1,616.80	
141837	25-May-18	M1246	MCMaster-CARR SUPPLY CO.	\$140.59		\$140.59	
141838	25-May-18	N2295	THE NEWS GAZETTE	\$979.15		\$979.15	
141839	31-May-18	A1934	ADVANCE AUTO PARTS	\$17.81		\$17.81	
141840	31-May-18	A7545	ARROW GLASS COMPANY	\$202.04		\$202.04	
141841	31-May-18	A7910	ASSURITY LIFE INSURANCE	\$98.00		\$98.00	
141842	31-May-18	B0433	DREW BARGMANN	\$320.00		\$320.00	
141843	31-May-18	B2180	BENEFIT PLANNING CONSULTANTS, INC.	\$819.00		\$819.00	
141844	31-May-18	B4510	BLACK & COMPANY	\$380.12		\$380.12	
141845	31-May-18	B8500	BUMPER TO BUMPER	\$238.98		\$238.98	
141846	31-May-18	C0005	CARL SCHNEIDER	\$324.95		\$324.95	
141847	31-May-18	C0233	** CALIFORNIA STATE DISBURSEMENT UNIT	\$24.00		\$24.00	
141848	31-May-18	C0410	** CAVALRY PORTFOLIO SERVICES, LLC	\$286.27		\$286.27	

**Champaign-Urbana Mass Transit District**  
**Accounts Payable Check Disbursement List**  
**BUSEY BANK OPERATING ACCOUNT**

From Date: 05/01/2018

Thru Date: 05/31/2018

Check #	Check Date	Ref #	Name	Total Paid	C-CARTS Portion	MTD Portion	Voided
141849	31-May-18	C1560	CDC PAPER & JANITOR	\$714.87		\$714.87	
141850	31-May-18	C2165	CENTRAL ILLINOIS TRUCKS	\$159.98		\$159.98	
141851	31-May-18	C3045	CITY OF CHAMPAIGN	\$8,494.50		\$8,494.50	
141852	31-May-18	C3100	CHELSEA FINANCIAL GROUP, LTD.	\$12,683.05		\$12,683.05	
141853	31-May-18	C3105	CHEMICAL MAINTENANCE INC.	\$2.20		\$2.20	
141854	31-May-18	C4588	CLEAN THE UNIFORM COMPANY HIGHLAND	\$417.32		\$417.32	
141855	31-May-18	C6257	** MARSHA L. COMBS-SKINNER	\$308.31		\$308.31	
141856	31-May-18	C6258	COLUMBIA STREET ROASTERY	\$186.25		\$186.25	
141857	31-May-18	C6259	COMMERCE BANK	\$8,245.81		\$8,245.81	
141858	31-May-18	C7363	** CREDITBOX.COM, L.L.C.	\$133.33		\$133.33	
141859	31-May-18	D8582	DURST CYCLE INC.	\$1,409.88		\$1,409.88	
141860	31-May-18	D8587	DUST & SON OF CHAMPAIGN COUNTY, INC	\$1,007.57		\$1,007.57	
141861	31-May-18	E0373	SNYDER PROPERTIES TRUST	\$220.35		\$220.35	
141862	31-May-18	E3393	BRENDA EILBRACHT	\$175.14		\$175.14	
141863	31-May-18	E7915	ETC INSTITUTE	\$2,000.00		\$2,000.00	
141864	31-May-18	F0365	FASTENAL COMPANY	\$295.88		\$295.88	
141865	31-May-18	F6367	FORD CITY	\$716.45		\$716.45	
141866	31-May-18	F6404	4IMPRINT, INC.	\$1,491.61		\$1,491.61	
141867	31-May-18	G3484	GILLIG LLC	\$32.15		\$32.15	
141868	31-May-18	G4290	GLOBAL EQUIPMENT COMPANY	\$293.21		\$293.21	
141869	31-May-18	G5519	KARL P. GNADT	\$748.34		\$748.34	
141870	31-May-18	G7308	GRAINGER	\$183.60		\$183.60	
141871	31-May-18	H3360	HIBU INC.	\$123.77		\$123.77	
141872	31-May-18	I0025	** VANTAGEPOINT TRANSFER AGENTS - 301281	\$24,812.01		\$24,812.01	
141873	31-May-18	I1595	IDENTISYS INCORPORATED	\$621.49		\$621.49	
141874	31-May-18	J0320	JANITOR & MAINTENANCE SUPPLIES, INC.	\$145.35		\$145.35	
141875	31-May-18	J6134	JOHNSON CONTROLS	\$812.46		\$812.46	
141875	31-May-18	J6134	JOHNSON CONTROLS	(\$812.46)		(\$812.46)	X
141876	31-May-18	L0440	LAWSON PRODUCTS, INC.	\$287.28		\$287.28	
141877	31-May-18	L3395	LIFE FITNESS	\$118.22		\$118.22	
141878	31-May-18	L6285	LOOMIS	\$248.10		\$248.10	
141879	31-May-18	M0377	MARTIN ONE SOURCE	\$800.00		\$800.00	
141880	31-May-18	M1269	MCS OFFICE TECHNOLOGIES	\$430.75		\$430.75	
141881	31-May-18	M2179	MENARD'S	\$526.71		\$526.71	
141882	31-May-18	M6018	FLEET SERVICES	\$20,441.04		\$20,441.04	
141883	31-May-18	M6162	MOHAWK MFG. & SUPPLY CO.	\$898.92		\$898.92	
141884	31-May-18	N0320	NAPA AUTO PARTS	\$417.15		\$417.15	
141885	31-May-18	N2292	THE AFTERMARKET PARTS COMPANY, LLC.	\$9,691.49		\$9,691.49	
141886	31-May-18	N9686	** NYS CHILD SUPPORT PROCESSING CENTER	\$60.00		\$60.00	
141887	31-May-18	P7585	** PRUDENTIAL INSURANCE CO.	\$13.00		\$13.00	
141888	31-May-18	R2133	SUBWAY REAL ESTATE CORP	\$18.00		\$18.00	
141889	31-May-18	R2175	RELIABLE PLUMBING & HEATING COMPANY	\$12,384.39		\$12,384.39	
141890	31-May-18	R6120	ROGARDS OFFICE PRODUCTS	\$470.19		\$470.19	
141891	31-May-18	R8487	BRIAN RULON	\$80.00		\$80.00	
141892	31-May-18	S0060	SAFEWORKS ILLINOIS	\$1,892.00		\$1,892.00	
141893	31-May-18	S0078	SAFETY-KLEEN CORP.	\$447.61		\$447.61	
141894	31-May-18	S3115	DANIEL J. HARTMAN	\$2,797.57		\$2,797.57	
141895	31-May-18	S6814	SPORTWORKS NW, INC.	\$8,648.16		\$8,648.16	
141896	31-May-18	S8165	STOCKS, INC.	\$28.00		\$28.00	
141897	31-May-18	S8506	JANE M. SULLIVAN	\$80.00		\$80.00	
141898	31-May-18	T0007	TJ'S LAUNDRY & DRY CLEANING	\$55.25		\$55.25	
141899	31-May-18	T7585	TRUGREEN CHEMLAWN	\$142.06		\$142.06	
141900	31-May-18	U5180	UNITED PARCEL SERVICE	\$62.14		\$62.14	
141901	31-May-18	U5996	UNIVERSITY OF ILLINOIS	\$1,860.00		\$1,860.00	
141902	31-May-18	U60295	ULINE	\$39.72		\$39.72	
141903	31-May-18	U6031	MOBILEVIEW	\$431.25		\$431.25	
141904	31-May-18	U7359	** URBANA MUNICIPAL EMPL. CREDIT UNION	\$44,791.24		\$44,791.24	
141905	31-May-18	U7385	URBANA TRUE TIRES	\$259.90		\$259.90	
141906	31-May-18	W3500	WIMACTEL INC.	\$12.22		\$12.22	
141907	31-May-18	W8564	WURTH USA MIDWEST, INC.	\$119.96		\$119.96	
141908	31-May-18	D9631	DYNAGRAPHICS FAST IMPRESSIONS	\$557.90		\$557.90	
5022018	02-May-18	S8030	** STATES DISBURSEMENT UNIT	\$2,118.01		\$2,118.01	
5041810	04-May-18	I5862	** INTERNAL REVENUE SERVICE	\$2,456.60	\$2,456.60	\$0.00	

**Champaign-Urbana Mass Transit District**  
**Accounts Payable Check Disbursement List**  
 BUSEY BANK OPERATING ACCOUNT

From Date: 05/01/2018

Thru Date: 05/31/2018

Check #	Check Date	Ref #	Name	Total Paid	C-CARTS Portion	MTD Portion	Voided
5042018	04-May-18	I5862	INTERNAL REVENUE SERVICE	\$155,478.05		\$155,478.05	
5051810	04-May-18	I4826	** ILLINOIS DEPT OF REVENUE	\$526.65	\$526.65	\$0.00	
5052018	04-May-18	I4826	** ILLINOIS DEPT OF REVENUE	\$28,089.35		\$28,089.35	
51010	10-May-18	I4830	** I.M.R.F.	\$3,590.23	\$3,590.23	\$0.00	
51018	10-May-18	I4830	I.M.R.F.	\$219,710.49		\$219,710.49	
5101810	10-May-18	I4820	ILLINOIS DEPARTMENT OF LABOR	\$0.00		\$0.00	X
5102018	10-May-18	I4820	ILLINOIS DEPARTMENT OF LABOR	\$0.00		\$0.00	X
5162018	16-May-18	S8030	** STATES DISBURSEMENT UNIT	\$2,118.01		\$2,118.01	
51718	17-May-18	B8584	^^ BUSEY BANK	\$394,135.12		\$394,135.12	
5181810	18-May-18	I5862	** INTERNAL REVENUE SERVICE	\$2,657.59	\$2,657.59	\$0.00	
5182018	18-May-18	I5862	INTERNAL REVENUE SERVICE	\$163,841.14		\$163,841.14	
5191810	18-May-18	I4826	** ILLINOIS DEPT OF REVENUE	\$562.23	\$562.23	\$0.00	
5192018	18-May-18	I4826	** ILLINOIS DEPT OF REVENUE	\$29,103.64		\$29,103.64	
52318	23-May-18	B8584	^^ BUSEY BANK	\$24,034.44		\$24,034.44	
				\$2,688,282.05	\$9,793.30	\$2,678,488.75	

^^ Internal Bank Transfer

**Champaign Urbana Mass Transit District**  
**Accounts Payable Check Disbursement List**

Checking Account #: 011-8189-0

FLEX CHECKING-BUSEY BANK

From Date: 5/2/2018

Thru Date: 5/31/2018

Check #	Check Date	Ref #	Name	Amount	Voided
5312018	5/31/2018	F4640	FLEX-EMPLOYEE REIMB.	\$8,716.45	
5455	5/2/2018	F4640	FLEX-EMPLOYEE REIMB.	\$46.20	
5456	5/23/2018	F4640	FLEX-EMPLOYEE REIMB.	\$1,131.10	
Total:				\$9,893.75	



## Account Summary

Basic Securities Account

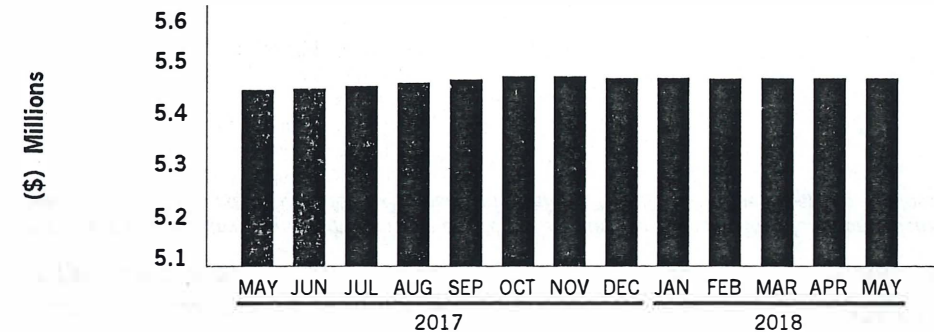
CHAMPAIGN URBANA MASS TRANSIT DIST  
C/O KARL GNADT & BRENDA E EILBRACHT

### CHANGE IN VALUE OF YOUR ACCOUNTS (includes accrued interest)

	This Period (5/1/18-5/31/18)	This Year (1/1/18-5/31/18)
<b>TOTAL BEGINNING VALUE</b>	<b>\$5,462,136.77</b>	<b>\$5,462,200.37</b>
Credits	—	—
Debits	—	—
Security Transfers	—	—
<b>Net Credits/Debits/Transfers</b>	<b>—</b>	<b>—</b>
<b>Change in Value</b>	<b>(1,001.64)</b>	<b>(1,065.24)</b>
<b>TOTAL ENDING VALUE</b>	<b>\$5,461,135.13</b>	<b>\$5,461,135.13</b>

### MARKET VALUE OVER TIME

The below chart displays the most recent thirteen months of Market Value.

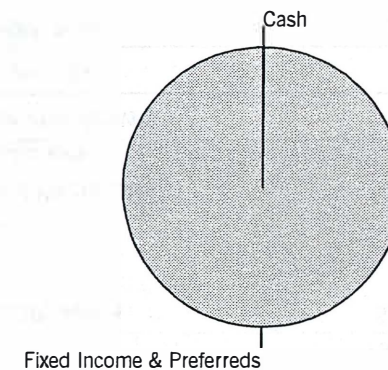


This chart does not reflect corrections to Market Value made subsequent to the dates depicted. It may exclude transactions in Annuities or positions where we are not the custodian, which could delay the reporting of Market Value.

### ASSET ALLOCATION (includes accrued interest)

	Market Value	Percentage
Cash	\$10,278.09	0.19
Fixed Income & Preferreds	5,450,857.04	99.81
<b>TOTAL VALUE</b>	<b>\$5,461,135.13</b>	<b>100.00%</b>

FDIC rules apply and Bank Deposits are eligible for FDIC insurance but are not covered by SIPC. Cash and securities (including MMFs) are eligible for SIPC coverage. See Expanded Disclosures. Values may include assets externally held, which are provided to you as a courtesy, and may not be covered by SIPC. For additional information, refer to the corresponding section of this statement.



This asset allocation represents holdings on a trade date basis, and projected settled Cash/BDP and MMF balances. These classifications do not constitute a recommendation and may differ from the classification of instruments for regulatory or tax purposes.

## Account Summary

Basic Securities Account

CHAMPAIGN URBANA MASS TRANSIT DIST  
C/O KARL GNADT & BRENDA E EILBRACHT

## BALANCE SHEET (^ includes accrued interest)

	Last Period (as of 4/30/18)	This Period (as of 5/31/18)
Cash, BDP, MMFs	\$108,959.25	\$10,278.09
Certificates of Deposit ^	5,453,177.52	5,450,857.04
Net Unsettled Purchases/Sales	(100,000.00)	—
<b>Total Assets</b>	<b>\$5,462,136.77</b>	<b>\$5,461,135.13</b>
<b>Total Liabilities</b> (outstanding balance)	—	—
<b>TOTAL VALUE</b>	<b>\$5,462,136.77</b>	<b>\$5,461,135.13</b>

## INCOME AND DISTRIBUTION SUMMARY

	This Period (5/1/18-5/31/18)	This Year (1/1/18-5/31/18)
Interest	\$1,318.84	\$39,061.45
<b>Income And Distributions</b>	<b>\$1,318.84</b>	<b>\$39,061.45</b>
<b>Tax-Exempt Income</b>	—	—
<b>TOTAL INCOME AND DISTRIBUTIONS</b>	<b>\$1,318.84</b>	<b>\$39,061.45</b>

Taxable and tax exempt income classifications are based on the characteristics of the underlying securities and not the taxable status of the account.

## ADDITIONAL ACCOUNT INFORMATION

Category	This Period (5/1/18-5/31/18)	This Year (1/1/18-5/31/18)
Accrued Interest Paid	—	\$800.00

## CASH FLOW

	This Period (5/1/18-5/31/18)	This Year (1/1/18-5/31/18)
<b>OPENING CASH, BDP, MMFs</b>	<b>\$108,959.25</b>	<b>\$21,081.18</b>
Purchases	—	(1,099,911.25)
Sales and Redemptions	—	1,050,000.00
Prior Net Unsettled Purch/Sales	(100,000.00)	N/A
Income and Distributions	1,318.84	39,108.16
<b>Total Investment Related Activity</b>	<b>\$(98,681.16)</b>	<b>\$(10,803.09)</b>
<b>Total Cash Related Activity</b>	—	—
<b>CLOSING CASH, BDP, MMFs</b>	<b>\$10,278.09</b>	<b>\$10,278.09</b>

## GAIN/(LOSS) SUMMARY

	Realized This Period (5/1/18-5/31/18)	Realized This Year (1/1/18-5/31/18)	Unrealized Inception to Date (as of 5/31/18)
Short-Term (Loss)	—	—	\$(32,469.58)
Long-Term (Loss)	—	—	(25,977.34)
<b>TOTAL GAIN/(LOSS)</b>	—	—	<b>\$(58,446.92)</b>

The Gain/(Loss) Summary, which may change due to basis adjustments, is provided for informational purposes and should not be used for tax preparation. Refer to Gain/(Loss) in the Expanded Disclosures.





## Account Detail

Basic Securities Account

CHAMPAIGN URBANA MASS TRANSIT DIST  
C/O KARL GNADT & BRENDA E EILBRACHTInvestment Objectives (in order of priority)<sup>†</sup>: Income, Aggressive Income, Capital Appreciation

Brokerage Account

<sup>†</sup> Inform us if your investment objectives, as defined in the Expanded Disclosures, change.

## HOLDINGS

This section reflects positions purchased/sold on a trade date basis. "Market Value" and "Unrealized Gain/(Loss)" may not reflect the value that could be obtained in the market. Fixed Income securities are sorted by maturity or pre-refunding date, and alphabetically within date. Estimated Annual Income a) is calculated on a pre-tax basis, b) does not include any reduction for applicable non-US withholding taxes, c) may include return of principal or capital gains which could overstate such estimates, and d) for securities that have a defined maturity date within the next 12 months, is reflected only through maturity date. Actual income or yield may be lower or higher than the estimates. Current yield reflects the income generated by an investment, and does not reflect changes in its price. Structured Investments, identified on the Position Description Details line as "Asset Class: Struct Inv," may appear in various statement product categories. When displayed, the accrued interest, annual income and current yield for those with a contingent income feature (e.g., Range Accrual Notes or Contingent Income Notes) are estimates and assume specified accrual conditions are met during the relevant period and payment in full of all contingent interest. For Floating Rate Securities, the accrued interest, annual income and current yield are estimates based on the current floating coupon rate and may not reflect historic rates within the accrual period.

## CASH, BANK DEPOSIT PROGRAM AND MONEY MARKET FUNDS

Cash, Bank Deposit Program, and Money Market Funds are generally displayed on a settlement date basis. You have the right to instruct us to liquidate your bank deposit balance(s) or shares of any money market fund balance(s) at any time and have the proceeds of such liquidation remitted to you. Estimated Annual Income, Accrued Interest, and APY% will only be displayed for fully settled positions.

Description	Market Value	7-Day Current Yield %	Est Ann Income	APY %
MORGAN STANLEY BANK N.A. #	\$10,278.09	—	\$10.00	0.100
	Market Value		Est Ann Income	
CASH, BDP, AND MMFs	\$10,278.09		\$10.00	

# Bank Deposits are held at Morgan Stanley Bank, N.A. and/or Morgan Stanley Private Bank, National Association, affiliates of Morgan Stanley Smith Barney LLC and each a national bank and FDIC member.

## CERTIFICATES OF DEPOSIT

Security Description	Trade Date	Face Value	Orig Unit Cost Adj Unit Cost	Unit Price	Orig Total Cost Adj Total Cost	Market Value	Unrealized Gain/(Loss)	Est Ann Income Accrued Interest	Current Yield %
JPM COLUMBUS OH CD	10/10/16	250,000.00	\$100.000	\$99.627	\$250,000.00			\$1,500.00	0.60
Coupon Rate 1.200%; Matures 10/19/2018; CUSIP 48126XGP4			\$100.000		\$250,000.00	\$249,067.50	\$(932.50) LT	\$346.15	
Interest Paid Quarterly Jan 19; Callable \$100.00 on 07/19/18; Yield to Maturity 2.177%; Issued 10/19/16; Maturity Value = \$250,000.00; Asset Class: FI & Pref									
Merrick Bank SOUTH JORDAN UT CD	10/12/16	250,000.00	100.000	99.623	250,000.00			1,198.00	0.48
Coupon Rate 1.150%; Matures 10/19/2018; CUSIP 59013JUF4			100.000		250,000.00	249,057.50	(942.50) LT	92.71	
Interest Paid Monthly Nov 19; Yield to Maturity 2.137%; Issued 10/19/16; Maturity Value = \$250,000.00; Asset Class: FI & Pref									
COMENITY BANK JUMBO (FORMERLY WORLD FINL NETWORK BANK) DE CD	10/14/15	200,000.00	100.000	99.834	200,000.00			1,417.00	0.71
Coupon Rate 1.700%; Matures 10/22/2018; CUSIP 20099AYI2			100.000		200,000.00	199,667.72	(332.28) LT	264.93	
Interest Paid Monthly Nov 02; Yield to Maturity 2.126%; Issued 10/21/15; Maturity Value = \$200,000.00; Asset Class: FI & Pref									

# Account Detail

Basic Securities Account

CHAMPAIGN URBANA MASS TRANSIT DIST  
C/O KARL GNADT & BRENDA E EILBRACHT

Security Description	Trade Date	Face Value	Orig Unit Cost Adj Unit Cost	Unit Price	Orig Total Cost Adj Total Cost	Market Value	Unrealized Gain/(Loss)	Est Ann Income Accrued Interest	Current Yield %
<b>First Bank PR SANTURCE PR CD</b>	10/14/15	250,000.000	100.000	99.855	250,000.00			1,615.00	0.65
Coupon Rate 1.550%; Matures 10/22/2018; CUSIP 33767AQP9			100.000		250,000.00	<b>249,637.50</b>	(362.50) LT	104.11	
<i>Interest Paid Monthly Nov 21; Yield to Maturity 1.922%; Issued 10/21/15; Maturity Value = \$250,000.00; Asset Class: FI &amp; Pref</i>									
<b>CUSTOMERS BANK PHOENIXVILLE PA CD</b>	10/10/16	250,000.000	100.000	99.586	250,000.00			1,438.00	0.58
Coupon Rate 1.150%; Matures 10/29/2018; CUSIP 23204HEL8			100.000		250,000.00	<b>248,965.00</b>	(1,035.00) LT	267.08	
<i>Int. Semi-Annually Apr/Oct 27; Yield to Maturity 2.162%; Issued 10/27/16; Maturity Value = \$250,000.00; Asset Class: FI &amp; Pref</i>									
<b>bmw SALT LAKE CITY UT CD</b>	3/15/16	250,000.000	100.000	99.419	250,000.00			3,250.00	1.31
Coupon Rate 1.300%; Matures 03/18/2019; CUSIP 05580ADW1			100.000		250,000.00	<b>248,547.50</b>	(1,452.50) LT	653.53	
<i>Int. Semi-Annually Mar/Sep 18; Yield to Maturity 2.035%; Issued 03/18/16; Maturity Value = \$250,000.00; Asset Class: FI &amp; Pref</i>									
<b>BANK NEW ENG SALEM NH CD</b>	10/12/16	250,000.000	100.000	98.964	250,000.00			2,292.00	0.93
Coupon Rate 1.100%; Matures 04/18/2019; CUSIP 063847AN7			100.000		250,000.00	<b>247,410.00</b>	(2,590.00) LT	73.87	
<i>Interest Paid Monthly Nov 21; Yield to Maturity 2.289%; Issued 10/21/16; Maturity Value = \$250,000.00; Asset Class: FI &amp; Pref</i>									
<b>WHITNEY BANK GULFPORT MS CD</b>	4/11/17	250,000.000	100.000	99.495	250,000.00			4,125.00	1.66
Coupon Rate 1.650%; Matures 04/22/2019; CUSIP 966594AY9			100.000		250,000.00	<b>248,737.50</b>	(1,262.50) LT	462.09	
<i>Int. Semi-Annually Apr/Oct 20; Yield to Maturity 2.222%; Issued 04/20/17; Maturity Value = \$250,000.00; Asset Class: FI &amp; Pref</i>									
<b>wells fargo cd SIOUX FALLS SD CD</b>	4/15/16	250,000.000	100.000	99.266	250,000.00			2,865.00	1.15
Coupon Rate 1.250%; Matures 04/22/2019; CUSIP 9497484N4			100.000		250,000.00	<b>248,165.00</b>	(1,835.00) LT	92.35	
<i>Interest Paid Monthly May 20; Yield to Maturity 2.081%; Issued 04/20/16; Maturity Value = \$250,000.00; Asset Class: FI &amp; Pref</i>									
<b>CAPITAL ONE NA MCLEAN VA CD</b>	10/14/15	250,000.000	100.000	99.400	250,000.00			4,875.00	1.96
Coupon Rate 1.950%; Matures 10/21/2019; CUSIP 14042RBA8			100.000		250,000.00	<b>248,500.00</b>	(1,500.00) LT	532.79	
<i>Int. Semi-Annually Apr/Oct 21; Yield to Maturity 2.391%; Issued 10/21/15; Maturity Value = \$250,000.00; Asset Class: FI &amp; Pref</i>									
<b>Goldman Sachs NEW YORK NY CD</b>	10/14/15	250,000.000	100.000	99.400	250,000.00			4,875.00	1.96
Coupon Rate 1.950%; Matures 10/21/2019; CUSIP 38148JU58			100.000		250,000.00	<b>248,500.00</b>	(1,500.00) LT	532.79	
<i>Int. Semi-Annually Apr/Oct 21; Yield to Maturity 2.391%; Issued 10/21/15; Maturity Value = \$250,000.00; Asset Class: FI &amp; Pref</i>									
<b>HSBC BANK USA MCLEAN VA CD</b>	4/11/17	250,000.000	100.000	98.939	250,000.00			4,250.00	1.72
Coupon Rate 1.700%; Matures 10/24/2019; CUSIP 40434YHQ3			100.000		250,000.00	<b>247,347.50</b>	(2,652.50) LT	429.64	
<i>Int. Semi-Annually Apr/Oct 24; Callable \$100.00 on 10/24/18; Yield to Maturity 2.477%; Issued 04/24/17; Maturity Value = \$250,000.00; Asset Class: FI &amp; Pref</i>									
<b>SALLIE MAE BK SALT LAKE CITY UT CD</b>	4/11/17	250,000.000	100.175	98.470	250,437.50			4,500.00	1.83
Coupon Rate 1.800%; Matures 03/23/2020; CUSIP 795450ZV0			100.109		250,272.56	<b>246,175.00</b>	(4,097.56) LT	855.98	
<i>Int. Semi-Annually Mar/Sep 22; Yield to Maturity 2.670%; Issued 03/22/17; Maturity Value = \$250,000.00; Asset Class: FI &amp; Pref</i>									
<b>discover GREENWOOD DE CD</b>	6/23/17	250,000.000	100.000	97.920	250,000.00			4,375.00	1.79
Coupon Rate 1.750%; Matures 07/06/2020; CUSIP 2546725C8			100.000		250,000.00	<b>244,800.00</b>	(5,200.00) ST	1,752.42	
<i>Int. Semi-Annually Jan/Jul 06; Yield to Maturity 2.777%; Issued 07/06/17; Maturity Value = \$250,000.00; Asset Class: FI &amp; Pref</i>									
<b>AMEX CENTURION SALT LAKE CITY UT CD</b>	4/10/18	250,000.000	99.445	98.410	248,611.25			5,500.00	2.24
Coupon Rate 2.200%; Matures 09/16/2020; CUSIP 02587DB31			99.445		248,611.25	<b>246,025.00</b>	(2,586.25) ST	1,135.87	
<i>Int. Semi-Annually Mar/Sep 16; Yield to Maturity 2.921%; Issued 09/16/15; Maturity Value = \$250,000.00; Asset Class: FI &amp; Pref</i>									





## Account Detail

Basic Securities Account

CHAMPAIGN URBANA MASS TRANSIT DIST  
C/O KARL GNADT & BRENDA E EILBRACHT

Security Description	Trade Date	Face Value	Orig Unit Cost Adj Unit Cost	Unit Price	Orig Total Cost Adj Total Cost	Market Value	Unrealized Gain/(Loss)	Est Ann Income Accrued Interest	Current Yield %
<b>CAPITAL ONE BANK GLEN ALLEN VA CD</b> Coupon Rate 2.000%; Matures 10/19/2020; CUSIP 1404205P1 <i>Int. Semi-Annually Apr/Oct 18; Yield to Maturity 2.841%; Issued 10/18/17; Maturity Value = \$250,000.00; Asset Class: FI &amp; Pref</i>	10/31/17	250,000.00	100.200 100.162	98.074	250,500.00 250,404.38	<b>245,185.00</b>	(5,219.38) ST	5,000.00 587.43	2.04
<b>CITIBANK, NA CD SIOUX FALLS SD CD</b> Coupon Rate 2.700%; Matures 03/29/2021; CUSIP 17312QH77 <i>Int. Semi-Annually Mar/Sep 29; Yield to Maturity 2.935%; Issued 03/29/18; Maturity Value = \$250,000.00; Asset Class: FI &amp; Pref</i>	4/10/18	250,000.00	100.200 100.192	99.366	250,500.00 250,479.50	<b>248,415.00</b>	(2,064.50) ST	6,750.00 1,155.57	2.72
<b>BANK BARODA NEW YORK BRH CD</b> Coupon Rate 2.150%; Matures 04/19/2021; CUSIP 06062Q3C6 <i>Int. Semi-Annually Apr/Oct 17; Yield to Maturity 2.948%; Issued 04/17/17; Maturity Value = \$250,000.00; Asset Class: FI &amp; Pref</i>	4/11/17	250,000.00	100.000 100.000	97.807	250,000.00 250,000.00	<b>244,517.50</b>	(5,482.50) LT	5,375.00 646.17	2.20
<b>ALLY BK SANDY UTAH</b> Coupon Rate 2.850%; Matures 05/03/2021; CUSIP 02007GCJ0 <i>Int. Semi-Annually May/Nov 03; Yield to Maturity 2.955%; Issued 05/03/18; Maturity Value = \$100,000.00; Asset Class: FI &amp; Pref</i>	4/24/18	100,000.00	100.000 100.000	99.707	100,000.00 100,000.00	<b>99,707.00</b>	(293.00) ST	2,850.00 216.85	2.86
<b>BARCLAYS BANK CD WILMINGTON DE CD</b> Coupon Rate 2.050%; Matures 07/26/2021; CUSIP 06740KKQ9 <i>Int. Semi-Annually Jan/Jul 26; Yield to Maturity 2.982%; Issued 07/26/17; Maturity Value = \$250,000.00; Asset Class: FI &amp; Pref</i>	7/18/17	250,000.00	100.000 100.000	97.212	250,000.00 250,000.00	<b>243,030.00</b>	(6,970.00) ST	5,125.00 1,769.68	2.11
<b>third federal CLEVELAND OH CD</b> Coupon Rate 2.050%; Matures 10/27/2021; CUSIP 88413QBT4 <i>Int. Semi-Annually Apr/Oct 27; Yield to Maturity 3.002%; Issued 10/27/17; Maturity Value = \$195,000.00; Asset Class: FI &amp; Pref</i>	10/16/17	195,000.00	100.000 100.000	96.939	195,000.00 195,000.00	<b>189,031.05</b>	(5,968.95) ST	3,997.00 371.35	2.11
<b>MS BANK CD SALT LAKE CITY UT CD</b> Coupon Rate 2.800%; Matures 03/29/2022; CUSIP 61747MR45 <i>Int. Semi-Annually Mar/Sep 29; Yield to Maturity 3.030%; Issued 03/29/18; Maturity Value = \$250,000.00; Asset Class: FI &amp; Pref</i>	3/26/18	250,000.00	100.000 100.000	99.174	250,000.00 250,000.00	<b>247,935.00</b>	(2,065.00) ST	7,000.00 1,198.37	2.82
<b>MEDALLION BK SALT LAKE CITY UT CD</b> Coupon Rate 2.800%; Matures 04/11/2022; CUSIP 58404DBP5 <i>Int. Semi-Annually Apr/Oct 09; Yield to Maturity 3.032%; Issued 04/09/18; Maturity Value = \$250,000.00; Asset Class: FI &amp; Pref</i>	3/29/18	250,000.00	100.000 100.000	99.159	250,000.00 250,000.00	<b>247,897.50</b>	(2,102.50) ST	7,000.00 994.54	2.82
		Percentage of Holdings	Face Value		Orig Total Cost Adj Total Cost	Market Value	Unrealized Gain/(Loss)	Est Ann Income Accrued Interest	Current Yield %
<b>CERTIFICATES OF DEPOSIT</b>			5,495,000.00		\$5,495,048.75 \$5,494,767.69	\$5,436,320.77	\$(25,977.34) LT \$(32,469.58) ST	\$91,172.00 \$14,536.27	1.68%
<b>TOTAL CERTIFICATES OF DEPOSIT</b> (includes accrued interest)		99.81%				\$5,450,857.04			

## Account Detail

Basic Securities Account

CHAMPAIGN URBANA MASS TRANSIT DIST  
C/O KARL GNADT & BRENDA E EILBRACHT

	Percentage of Holdings	Total Cost	Market Value	Unrealized Gain/(Loss)	Est Ann Income Accrued Interest	Current Yield %
TOTAL VALUE		\$5,494,767.69	\$5,446,598.86	\$(25,977.34) LT \$(32,469.58) ST	\$91,182.00 \$14,536.27	1.67%
TOTAL VALUE (includes accrued interest)	100.00%		\$5,461,135.13			

Unrealized Gain/(Loss) totals only reflect positions that have both cost basis and market value information available. Cash, MMF, Deposits and positions stating 'Please Provide' or 'Pending Corporate Actions' are not included.

## ALLOCATION OF ASSETS (^includes accrued interest)

	Cash	Equities	Fixed Income & Preferred Securities	Alternatives	Structured Investments	Other
Cash, BDP, MMFs	\$10,278.09	—	—	—	—	—
Certificates of Deposit ^	—	—	\$5,450,857.04	—	—	—
TOTAL ALLOCATION OF ASSETS ^	\$10,278.09	—	\$5,450,857.04	—	—	—

## ACTIVITY

## CASH FLOW ACTIVITY BY DATE

Activity Date	Settlement Date	Activity Type	Description	Comments	Quantity	Price	Credits/(Debits)
5/2		Interest Income	COMENITY BANK CD 1700 18OC22	CUSIP: 20099AYI2			\$279.45
5/21		Interest Income	First Bank PR 1550 18OC22	CUSIP: 33767AQP9			318.49
5/21		Interest Income	wells fargo cd 1250 19AP22	CUSIP: 9497484N4			256.85
5/21		Interest Income	Merrick Bank 1150 18OC19	CUSIP: 59013JUF4			236.30
5/21		Interest Income	BANK NEW ENG CD 1100 19AP18	CUSIP: 063847AN7			226.03
5/31		Interest Income	MORGAN STANLEY BANK N.A. (Period 05/01-05/31)				1.72
NET CREDITS/(DEBITS)							\$1,318.84

## MONEY MARKET FUND (MMF) AND BANK DEPOSIT PROGRAM ACTIVITY

Activity Date	Activity Type	Description	Credits/(Debits)
5/2	Automatic Investment	BANK DEPOSIT PROGRAM	\$279.45
5/3	Automatic Redemption	BANK DEPOSIT PROGRAM	(100,000.00)
5/21	Automatic Investment	BANK DEPOSIT PROGRAM	1,037.67
5/31	Automatic Investment	BANK DEPOSIT PROGRAM	1.72
NET ACTIVITY FOR PERIOD			\$(98,681.16)

ORDINANCE NO. 2018-2  
BUDGET AND APPROPRIATION ORDINANCE OF THE  
CHAMPAIGN-URBANA MASS TRANSIT DISTRICT  
CHAMPAIGN COUNTY, ILLINOIS  
FOR THE FISCAL YEAR BEGINNING JULY 1, 2018 AND ENDING JUNE 30, 2019

WHEREAS, notice of a public hearing on the Tentative Budget and Appropriation Ordinance was given in the Champaign-Urbana News-Gazette on May 24, 2018, and  
WHEREAS, a public hearing was held upon Tentative Budget and Appropriation Ordinance on the 27th day of June, 2018

BE IT ORDAINED BY THE BOARD OF TRUSTEES OF THE CHAMPAIGN-URBANA  
MASS TRANSIT DISTRICT, Champaign County, Illinois, that:

Section 1. For the fiscal year ending June 30, 2019, the following sums of money are appropriated for the corporate purposes of the Champaign-Urbana Mass Transit District, Urbana, Illinois:

		AMOUNT APPROPRIATED
1	OPERATIONS	
A	Wages	
	(1) Operators' Wages	\$9,500,000
	(2) Supervisory Wages	1,950,000
	(3) Clerical	275,000
	Total	<u>          </u> \$11,725,000
B	Benefits	
	(1) FICA	\$1,000,000
	(2) Illinois Municipal Retirement Fund	2,775,000
	(3) Employee Health Insurance	2,775,000
	(4) Worker's Compensation Insurance	151,000
	(5) Unemployment Insurance	50,000
	(6) Paid Leave (Sick Leave, Holidays, etc.)	2,410,000
	(7) Uniform Allowance	45,000
	(8) Early Retirement	100,000
	(9) Other Benefits	40,000
	Total	<u>          </u> \$9,346,000
C	Services	
	(1) Printing	\$50,000
	(2) Half Fare Cab	175,000
	(3) ADA Service	900,000
	(4) Other	30,000
	Total	<u>          </u> \$1,155,000

D	Supplies		
	(1) Fuel and Lubricants	\$2,750,000	
	(2) Fuel Tax - Urbana	40,000	
	(2) Tires and Tubes	150,000	
	(3) Small Equipment	45,000	
	(4) Other Material and Supplies	30,000	
	Total		\$3,015,000

E	Miscellaneous		
	(1) Leased Equipment	\$20,000	
	(2) Other	18,000	
	Total		\$38,000

**TOTAL -- OPERATIONS                      \$25,279,000**

## 2 MAINTENANCE

A	Wages		
	(1) Mechanics' Wages	\$1,500,000	
	(2) Service Personnel Wages	850,000	
	(3) Supervisory Wages	627,000	
	Total		\$2,977,000

B	Benefits		
	(1) FICA	\$225,000	
	(2) Illinois Municipal Retirement Fund	575,000	
	(3) Employee Health Insurance	650,000	
	(4) Worker's Compensation Insurance	226,000	
	(5) Unemployment Insurance	10,000	
	(6) Paid Leave (Sick Leave, Holidays, etc.)	447,000	
	(7) Uniform Allowance	30,000	
	(8) Tool Allowance	10,000	
	(9) Early Retirement		
	(10) Other Benefits	18,000	
	Total		\$2,191,000

C	Services		
	(1) Contract Maintenance	80,000	
	(2) Other Services	7,000	
	Total		\$87,000

D	Materials / Supplies		
	(1) Fuel and Lubricants	110,000	
	(2) Garage Equipment Repairs	40,000	
	(3) Building / Ground Repairs	160,000	
	(4) Revenue Vehicle Repairs	1,900,000	
	(5) Service Vehicle Repairs	20,000	
	(6) Service Supplies	55,000	
	(7) Shop Tools and Equipment	60,000	
	(8) Passenger Shelter Repairs	75,000	
	(9) Other Material and Supplies	30,000	
	Total		\$2,450,000
E	Miscellaneous		
	(1) Leased Equipment	54,000	
	(2) Other	12,000	
			\$66,000
TOTAL -- MAINTENANCE			<b>\$7,771,000</b>

### 3 GENERAL ADMINISTRATION

A	Wages		
	(1) Administrative Salaries	\$1,250,000	
	(2) Clerical	300,000	
	Total		\$1,550,000
B	Benefits		
	(1) FICA	\$85,000	
	(2) Illinois Municipal Retirement Fund	225,000	
	(3) Employee Health Insurance	295,000	
	(4) Worker's Compensation Insurance	5,000	
	(5) Unemployment Insurance	3,000	
	(6) Early Retirement		
	(7) Other Benefits	58,000	
	Total		\$671,000
C	Services		
	(1) Professional & Technical Services	\$650,000	
	(2) Contract Maintenance	500,000	
	(3) Printing	1,000	
	(4) Other Services	40,000	
	Total		\$1,191,000
D	Supplies		
	(1) Office Supplies	\$15,000	
	(2) Equipment	60,000	
	(3) Building / Ground Repairs	60,000	
	Total		\$135,000

E	Utilities			
	(1) Utilities		335,000	
		Total		\$335,000
F	Insurance Premiums			
	(1) Illinois Public Transit Risk Management Association Premium Assessment		530,000	
	(2) Illinois Public Transit Risk Management Association Reserve Fund Assessment		500,000	
	(3) Physical Damage		55,000	
	(4) Recovery		-25,000	
	(5) Other			
		Total		\$1,060,000
G	Miscellaneous			
	(1) Dues and Subscriptions		80,000	
	(2) Travel and Meetings		90,000	
	(3) Public Information		200,000	
	(4) Trustee Compensation		8,000	
	(5) Postage		8,000	
	(6) Advertising Services			
	(7) Other Miscellaneous		113,000	
	(8) Leased Equipment		29,000	
	(9) Interest Expense			
	(10) Ineligible Expenses		200,000	
	(11) Debt Service Equipment		14,617,000	
		Total		\$15,345,000
	TOTAL -- GENERAL ADMINISTRATION			\$20,287,000

## 4 ILLINOIS TERMINAL

A	Wages		
	(1) Clerical	\$116,000	
	(2) Security	195,000	
	(3) Maintenance	140,000	
	(4) Overhead	56,000	
	Total		\$507,000
B	Benefits		
	(1) FICA	\$40,000	
	(2) Illinois Municipal Retirement Fund	125,000	
	(3) Employee Health Insurance	165,000	
	(4) Worker's Compensation Insurance	25,000	
	(5) Unemployment Insurance	3,000	
	(6) Paid Leave (Sick Leave, Holidays, etc.)	25,000	
	(7) Other Fringes	20,000	
	Total		\$403,000

C	Services			
	(1) Contract	40,000		
	(2) Professional & Technical Services	3,000		
	(3) Other	6,000		
	Total			\$49,000
D	Materials / Supplies			
	(1) Service Supplies	25,000		
	(2) Office Supplies	15,000		
	(3) Equipment	15,000		
	(4) Building and Grounds	160,000		
	Total			\$215,000
E	Utilities			
	(1)Utilities	125,000		
	Total			\$125,000
F	Miscellaneous			
	(1) Miscellaneous	13,000		
	Total			\$13,000
	TOTAL -- ILLINOIS TERMINAL			<b>\$1,312,000</b>

## 5 CAPITAL EXPENDITURES

(1)	Architectural and Engineering --			
	803, 1101, 1207, 45 East, & Misc.	\$500,000		
(2)	Shelters, Stops & Associated Work	\$300,000		
(3)	Miscellaneous Facility Improvements	\$200,000		
(4)	MCORE Local Share	\$800,000		
	TOTAL CAPITAL			\$1,800,000
	TOTAL APPROPRIATIONS			<b>\$56,449,000</b>

Said appropriation items shall constitute the budget for the District for said fiscal period.

In support of said budget and as a part thereof, the following statement is made under Section 3 of "The Illinois Municipal Law" approved July 12, 1957, as amended:

A.	EXPECTED CASH ON HAND AT BEGINNING OF FISCAL PERIOD		\$7,500,000
B.	ESTIMATED RECEIPTS		
(1)	Cash Receipts		
	a) Operating Revenue	8,008,000	
	b) Advertising Revenue	300,000	
	c) Interest Income	100,000	
	Total		\$8,408,000
(2)	Cash Receipts -- IDOT Downstate Operating Assistance Funds		\$35,400,000
(3)	Corporate Replacement Tax		\$150,000
(4)	Capital Reserve Transfer		\$4,491,000
(5)	Estimated Receipts from Taxes to be Levied		
	a) General Levy	4,694,000	
	b) Social Security Levy	1,000,000	
	c) Illinois Municipal Retirement Fund Levy	1,675,000	
	d) Worker's Compensation	82,000	
	e) Liability Insurance and Claims Service and Claims	500,000	
	f) Unemployment Insurance	34,000	
	g) Auditing	15,000	
	Total		\$8,000,000
	TOTAL ESTIMATED RECEIPTS AND CASH ON HAND		\$63,949,000
C.	EXPECTED CASH ON HAND AT END OF YEAR		\$7,500,000



Section 2. This Ordinance shall be in full force and effect upon its passage.

Sections 3. The Secretary of the Board of Trustees is directed to file certified copy of this Ordinance with the County Clerk of Champaign County, Illinois.

This Ordinance is hereby by the affirmative vote, the "Ayes" and "Nays" being called, of a majority of the members of the Board of Trustees of the Champaign-Urbana Mass Transit District at a duly called Regular Meeting of the said Board of Trustees on the day of \_\_\_\_\_ pursuant to a roll call as follows:

AYES:

NAYS:

ABSTAIN:

ABSENT:

Approved by me this \_\_\_\_\_ day of \_\_\_\_\_.

---

Bradley Diel  
Chair-Board of Trustees

ATTEST:

---

Jack Waaler, Secretary



To: Board of Trustees  
From: Karl Gnadt  
Date: June 27, 2018  
Subject: Resolution Ascertaining Prevailing Wages

---

- A. Introduction:** This resolution approves and establishes the Illinois Department of Labor prevailing wage rates for Champaign County as the prevailing wage rate for any public works coming under the jurisdiction of the Champaign-Urbana Mass Transit District (MTD).
- B. Recommended Action:** Staff recommends that the Board authorize the Chair to execute the resolution ascertaining prevailing wages.
- C. Prior Trustee Action:** The Board annually approves the prevailing wage rates for public works projects.
- D. Requirements:** The Illinois statutes (820 ILCS 130/1 et. seq) requires all public bodies every year during the month of June to establish prevailing wage rates for “laborers, mechanics, and other workers” under contract for public works projects. All contractors on MTD public works projects are required to pay at least this wage to employees utilized on those projects. The Illinois Department of Labor most recent prevailing wage rate were effective as of September 1, 2017.

Additional information is available on the Illinois Department of Labor web page on prevailing wage rates at <https://www2.illinois.gov/idol/Laws-Rules/CONMED/Pages/2017-Rates.aspx>.

**RESOLUTION NO. 2018-2**

**A RESOLUTION ASCERTAINING PREVAILING WAGES  
(2018-2019)**

**BE IT RESOLVED BY THE BOARD OF TRUSTEES OF THE CHAMPAIGN-URBANA MASS  
TRANSIT DISTRICT OF URBANA, ILLINOIS AS FOLLOWS:**

SECTION 1: The general prevailing rate of wages in this locality for laborers, mechanics, and other workers engaged in the construction of public works coming under the jurisdiction of the Champaign-Urbana Mass Transit District is hereby ascertained to be the same as the prevailing rate of wages for construction work in the Champaign County area as determined by the Illinois Department of Labor as of September 1, 2017, as amended, a copy of that determination being attached hereto as Exhibit "A" and made a part hereof.

SECTION 2: The Secretary shall (a) publicly post or keep available for inspection by an interested party in the Administrative Offices of the Champaign-Urbana Mass Transit District at 1101 East University Avenue, Urbana, Illinois this determination of the prevailing rate of wages; (b) mail a copy of this determination to any person who requests a copy of the prevailing rate of wages; (c) promptly file a certified copy of this Resolution with the Illinois Department of Labor; and (d) cause a notice of this determination to be posted on MTD's website, along with a hyperlink to the prevailing wage schedule for Champaign County published on the official website of the Illinois Department of Labor.

ADOPTED this \_\_\_\_\_ day of \_\_\_\_\_, pursuant to a roll call vote as follows:

AYES: \_\_\_\_\_

NAYS: \_\_\_\_\_

ABSENT: \_\_\_\_\_

\_\_\_\_\_  
Bradley Diel, Chair  
Champaign-Urbana Board of Trustees

ATTEST:

\_\_\_\_\_  
Jack Waaler, Secretary

Exhibit A

<b>Prevailing Wage rates for Champaign County effective Sept. 1, 2017</b>												
<b>Trade Title</b>	<b>Region</b>	<b>Type</b>	<b>Class</b>	<b>Base Wage</b>	<b>Fore- man Wage</b>	<b>M-F OT</b>	<b>OSA</b>	<b>OSH</b>	<b>H/W</b>	<b>Pension</b>	<b>Vacation</b>	<b>Training</b>
ASBESTOS ABT-GEN	ALL	BLD		31.56	32.81	1.5	1.5	2	6.30	15.40	0.00	0.90
ASBESTOS ABT-MEC	ALL	BLD		22.40	23.40	1.5	1.5	2	6.80	6.55	0.00	0.50
BOILERMAKER	ALL	BLD		39.50	42.50	2	2	2	7.07	12.47	0.00	0.40
BRICK MASON	ALL	BLD		31.50	33.08	1.5	1.5	2	8.57	13.51	0.00	0.85
CARPENTER	ALL	BLD		36.04	38.29	1.5	1.5	2	8.45	12.35	0.00	0.54
CARPENTER	ALL	HWY		36.20	37.95	1.5	1.5	2	8.45	12.95	0.00	0.52
CEMENT MASON	ALL	BLD		32.60	34.60	1.5	1.5	2	8.57	9.84	0.00	0.50
CEMENT MASON	ALL	HWY		33.71	35.21	1.5	1.5	2	8.57	9.84	0.00	0.50
CERAMIC TILE FNSHER	ALL	BLD		30.48	30.48	1.5	1.5	2	8.57	9.94	0.00	0.10
ELECTRIC PWR EQMT OP	ALL	ALL		43.76	54.80	1.5	1.5	2	6.81	12.25	0.00	0.44
ELECTRIC PWR GRNDMAN	ALL	ALL		29.96	54.80	1.5	1.5	2	6.40	8.39	0.00	0.30
ELECTRIC PWR LINEMAN	ALL	ALL		48.61	54.80	1.5	1.5	2	6.96	13.61	0.00	0.49
ELECTRIC PWR TRK DRV	ALL	ALL		31.42	54.80	1.5	1.5	2	6.44	8.80	0.00	0.31
ELECTRICIAN	ALL	BLD		39.09	41.09	1.5	1.5	2	6.95	9.05	0.00	0.59
ELECTRONIC SYS TECH	ALL	BLD		30.83	32.83	1.5	1.5	2	6.95	8.77	0.00	0.40
ELEVATOR CONSTRUCTOR	ALL	BLD		43.43	48.86	2	2	2	15.28	15.71	3.47	0.60
FENCE ERECTOR	ALL	ALL		32.21	34.11	1.5	1.5	2	8.84	10.02	0.00	0.90
GLAZIER	ALL	BLD		35.91	37.91	1.5	1.5	2	6.25	9.16	0.00	0.68
HT/FROST INSULATOR	ALL	BLD		31.23	32.23	1.5	1.5	2	7.51	6.16	0.00	0.25
IRON WORKER	ALL	ALL		32.61	34.51	1.5	1.5	2	10.64	11.67	0.00	0.90
LABORER	ALL	BLD		29.06	30.31	1.5	1.5	2	6.30	15.40	0.00	0.80
LABORER	ALL	HWY		30.85	31.85	1.5	1.5	2	6.30	15.48	0.00	0.80
LATHER	ALL	BLD		36.04	38.29	1.5	1.5	2	8.45	12.35	0.00	0.54
MACHINIST	ALL	BLD		45.35	47.85	1.5	1.5	2	7.26	8.95	1.85	0.00
MARBLE FINISHERS	ALL	BLD		30.48	30.48	1.5	1.5	2	8.57	9.94	0.00	0.10

MARBLE MASON	ALL	BLD		31.50	33.08	1.5	1.5	2	8.57	13.51	0.00	0.85
MILLWRIGHT	ALL	BLD		31.74	33.99	1.5	1.5	2	8.45	17.11	0.00	0.54
MILLWRIGHT	ALL	HWY		33.58	35.33	1.5	1.5	2	8.20	16.67	0.00	0.52
OPERATING ENGINEER	ALL	ALL	1	40.00	42.00	1.5	1.5	2	9.00	10.35	0.00	1.00
OPERATING ENGINEER	ALL	ALL	2	25.35	42.00	1.5	1.5	2	9.00	10.35	0.00	1.00
OPERATING ENGINEER	ALL	ALL	3	41.00	42.00	1.5	1.5	2	9.00	10.35	0.00	1.00
PAINTER	ALL	ALL		35.29	36.79	1.5	1.5	2	8.57	5.33	0.00	0.60
PAINTER SIGNS	ALL	ALL		35.29	36.79	1.5	1.5	2	8.57	5.33	0.00	0.60
PILEDRIIVER	ALL	BLD		37.04	39.29	1.5	1.5	2	8.45	12.35	0.00	0.54
PILEDRIIVER	ALL	HWY		36.20	37.95	1.5	1.5	2	8.45	12.95	0.00	0.52
PIPEFITTER	ALL	BLD		41.54	44.04	1.5	1.5	2	7.10	11.45	0.00	1.99
PLASTERER	ALL	BLD		32.35	34.35	1.5	1.5	2	8.57	11.75	0.00	0.50
PLUMBER	ALL	BLD		41.54	44.04	1.5	1.5	2	7.10	11.45	0.00	1.99
ROOFER	ALL	BLD		31.05	32.55	1.5	1.5	2	9.25	8.43	1.00	0.24
SHEETMETAL WORKER	ALL	BLD		36.10	38.10	1.5	1.5	2	8.95	15.14	0.00	0.52
SPRINKLER FITTER	ALL	BLD		39.87	41.62	1.5	1.5	2	8.77	6.05	0.00	0.45
STONE MASON	ALL	BLD		31.50	33.08	1.5	1.5	2	8.57	13.51	0.00	0.85
TERRAZZO FINISHER	ALL	BLD		30.48	30.48	1.5	1.5	2	8.57	9.94	0.00	0.10
TERRAZZO MASON	ALL	BLD		31.98	31.98	1.5	1.5	2	8.57	9.94	0.00	0.10
TILE MASON	ALL	BLD		31.98	31.98	1.5	1.5	2	8.57	9.94	0.00	0.10
TRUCK DRIVER	ALL	ALL	1	36.15	40.04	1.5	1.5	2	12.16	5.89	0.00	0.25
TRUCK DRIVER	ALL	ALL	2	36.67	40.04	1.5	1.5	2	12.16	5.89	0.00	0.25
TRUCK DRIVER	ALL	ALL	3	36.91	40.04	1.5	1.5	2	12.16	5.89	0.00	0.25
TRUCK DRIVER	ALL	ALL	4	37.25	40.04	1.5	1.5	2	12.16	5.89	0.00	0.25
TRUCK DRIVER	ALL	ALL	5	38.23	40.04	1.5	1.5	2	12.16	5.89	0.00	0.25
TRUCK DRIVER	ALL	O&C	1	28.92	32.03	1.5	1.5	2	12.16	5.89	0.00	0.25
TRUCK DRIVER	ALL	O&C	2	29.34	32.03	1.5	1.5	2	12.16	5.89	0.00	0.25
TRUCK DRIVER	ALL	O&C	3	29.53	32.03	1.5	1.5	2	12.16	5.89	0.00	0.25
TRUCK DRIVER	ALL	O&C	4	29.80	32.03	1.5	1.5	2	12.16	5.89	0.00	0.25
TRUCK DRIVER	ALL	O&C	5	30.58	32.03	1.5	1.5	2	12.16	5.89	0.00	0.25
TUCKPOINTER	ALL	BLD		31.50	33.08	1.5	1.5	2	8.57	13.51	0.00	0.85

### **Legend**

**M-F OT** Unless otherwise noted, OT pay is required for any hour greater than 8 worked each day, Mon through Fri. The number listed is the multiple of the base wage.

**OSA** Overtime pay required for every hour worked on Saturdays

**OSH** Overtime pay required for every hour worked on Sundays and Holidays

**H/W** Health/Welfare benefit

### Explanations CHAMPAIGN COUNTY

The following list is considered as those days for which holiday rates of wages for work performed apply: New Years Day, Memorial Day, Fourth of July, Labor Day, Thanksgiving Day, Christmas Day and Veterans Day in some classifications/counties. Generally, any of these holidays which fall on a Sunday is celebrated on the following Monday. This then makes work performed on that Monday payable at the appropriate overtime rate for holiday pay. Common practice in a given local may alter certain days of celebration. If in doubt, please check with IDOL.

Oil and chip resealing (O&C) means the application of road oils and liquid asphalt to coat an existing road surface, followed by application of aggregate chips or gravel to coated surface, and subsequent rolling of material to seal the surface.

### EXPLANATION OF CLASSES

ASBESTOS - GENERAL - removal of asbestos material/mold and hazardous materials from any place in a building, including mechanical systems where those mechanical systems are to be removed. This includes the removal of asbestos materials/mold and hazardous materials from ductwork or pipes in a building when the building is to be demolished at the time or at some close future date.

ASBESTOS - MECHANICAL - removal of asbestos material from mechanical systems, such as pipes, ducts, and boilers, where the mechanical systems are to remain.

### CERAMIC TILE FINISHER, MARBLE FINISHER, TERRAZZO FINISHER

Assisting, helping or supporting the tile, marble and terrazzo mechanic by performing their historic and traditional work assignments required to complete the proper installation of the work covered by said crafts. The term "Ceramic" is used for naming the classification only and is in no way a limitation of the product handled. Ceramic takes into consideration most hard tiles.

### ELECTRONIC SYSTEMS TECHNICIAN

Installation, service and maintenance of low-voltage systems which utilizes the transmission and/or transference of voice, sound, vision, or digital for commercial, education, security and entertainment purposes for the following: TV monitoring and surveillance, background/foreground music, intercom and telephone interconnect, field programming, inventory control systems, microwave transmission, multi-media, multiplex, radio page, school, intercom and sound burglar alarms and low voltage master clock systems.

Excluded from this classification are energy management systems, life safety systems, supervisory controls and data acquisition systems not intrinsic with the above listed systems, fire alarm systems, nurse call systems and raceways exceeding fifteen feet in length.

TRUCK DRIVER - BUILDING, HEAVY AND HIGHWAY CONSTRUCTION Class 1. Drivers on 2 axle trucks hauling less than 9 ton. Air compressor and welding machines and brooms, including those pulled by separate units, truck driver helpers, warehouse employees, mechanic helpers, greasers and tiremen, pickup trucks when hauling materials, tools, or workers to and from and on-the-job site, and fork lifts up to 6,000 lb. capacity.

Class 2. Two or three axle trucks hauling more than 9 ton but hauling less than 16 ton. A-frame winch trucks, hydrolift trucks, vactor trucks or similar equipment when used for transportation purposes. Fork lifts over 6,000 lb. capacity, winch trucks, four axle combination units, and ticket writers.

Class 3. Two, three or four axle trucks hauling 16 ton or more. Drivers on water pulls, articulated dump trucks, mechanics and working forepersons, and dispatchers. Five axle or more combination units.

Class 4. Low Boy and Oil Distributors.

Class 5. Drivers who require special protective clothing while employed on hazardous waste work.

TRUCK DRIVER - OIL AND CHIP RESEALING ONLY.

This shall encompass laborers, workers and mechanics who drive contractor or subcontractor owned, leased, or hired pickup, dump, service, or oil distributor trucks. The work includes transporting materials and equipment (including but not limited to, oils, aggregate supplies, parts, machinery and tools) to or from the job site; distributing oil or liquid asphalt and aggregate; stock piling material when in connection with the actual oil and chip contract. The Truck Driver (Oil & Chip Resealing) wage classification does not include supplier delivered materials.

OPERATING ENGINEERS - BUILDING, HEAVY AND HIGHWAY CONSTRUCTION Class 1. Draglines, Derricks, Shovels, Gradalls, Mechanics, Tractor Highlift, Tournadozer, Concrete Mixers with Skip, Tournamixer, Two Drum Machine, One Drum Hoist with Tower or Boom, Cableways, Tower Machines, Motor Patrol, Boom Tractor, Boom or Winch Truck, Winch or Hydraulic Boom Truck, Tournapull, Tractor Operating Scoops, Bulldozer, Push Tractor, Asphalt Planer, Finishing Machine on Asphalt, Large Rollers on Earth, Rollers on Asphalt Mix, Ross Carrier or similar Machine, Gravel Processing Machine, Asphalt Plant Engineer, Paver Operator, Dredging Equipment, or Dredge Engineer, or Dredge Operator, Central Mix Plant Engineer, CMI or similar type machine, Concrete Pump, Truck or Skid Mounted, Engineer or Rock Crusher Plant, Concrete Plant Engineer,



Ditching Machine with dual attachment, Tractor Mounted Loaders, Hydro Crane, Standard or Dinkey Locomotives, Scoopmobiles, Euclid Loader, Soil Cement Machine, Back Filler, Elevating Machine, Power Blade, Drilling Machine, including Well Testing, Caissons, Shaft or any similar type drilling machines, Motor Driven Paint Machine, Pipe Cleaning Machine, Pipe Wrapping Machine, Pipe Bending Machine, Apsco Paver, Boring Machine, (Head Equipment Greaser), Barber-Greene Loaders, Formless Paver, (Well Point System), Concrete Spreader, Hydra Ax, Span Saw, Marine Scoops, Brush Mulcher, Brush Burner, Mesh Placer, Tree Mover, Helicopter Crew (3), Piledriver-Skid or Crawler, Stump Remover, Root Rake, Tug Boat Operator, Refrigerating Machine, Freezing Operator, Chair Cart- Self-Propelled, Hydra Seeder, Straw Blower, Power Sub Grader, Bull Float, Finishing Machine, Self-Propelled Pavement Breaker, Lull (or similar type Machine), Two Air Compressors, Compressors hooked in Manifold, Chip Spreader, Mud Cat, Sull-Air, Fork Lifts (except when used for landscaping work), Soil Stabilizer (Seaman Tiller, Bo Mag, Rago Gator, and similar types of equipment), Tube Float, Spray Machine, Curing Machine, Concrete or Asphalt Milling Machine, Snooper Truck-Operator, Backhoe, Farm Tractors (with attachments), 4 Point Lift System (Power Lift or similar type), Skid-Steer (Bob Cat or similar type), Wrecking Shears, Water Blaster.

Class 2. Concrete Mixers without Skips, Rock Crusher, Ditching Machine under 6', Curbing Machine, One Drum Machines without Tower or Boom, Air Tugger, Self-Propelled Concrete Saw, Machine Mounted Post Hole Digger, two to four Generators, Water Pumps or Welding Machines, within 400 feet, Air Compressor 600 cu. ft. and under, Rollers on Aggregate and Seal Coat Surfaces, Fork Lift (when used for landscaping work), Concrete and Blacktop Curb Machine, One Water Pump, Oilers, Air Valves or Steam Valves, One Welding Machine, Truck Jack, Mud Jack, Gunnite Machine, House Elevators when used for hoisting material, Engine Tenders, Fireman, Wagon Drill, Flex Plane, Conveyor, Siphons and Pulsometer, Switchman, Fireman on Paint Pots, Fireman on Asphalt Plants, Distributor Operator on Trucks, Tampers, Self-Propelled Power Broom, Striping Machine (motor driven), Form Tamper, Bulk Cement Plant, Equipment Greaser, Deck Hands, Truck Crane Oiler-Driver, Cement Blimps, Form Grader, Temporary Heat, Throttle Valve, Super Sucker (and similar type of equipment).

Class 3. Power Cranes, Truck or Crawler Crane, Rough Terrain Crane (Cherry Picker), Tower Crane, Overhead Crane.

#### Other Classifications of Work:

For definitions of classifications not otherwise set out, the Department generally has on file such definitions which are available. If a task to be performed is not subject to one of the classifications of pay set out, the Department will upon being contacted state which neighboring county has such a classification and provide such rate, such rate being deemed to exist by reference in this document. If no neighboring county rate applies to the task, the Department shall undertake a special determination, such special determination being then deemed to have existed under this determination. If a project requires these, or any classification not listed, please contact IDOL at 217-782-1710 for wage rates or clarifications.

#### LANDSCAPING

Landscaping work falls under the existing classifications for laborer, operating engineer and truck driver. The work performed by landscape plantsman and landscape laborer is covered by the existing classification of laborer. The work performed by landscape operators (regardless of equipment used or its size) is covered by the classifications of operating engineer. The work performed by landscape truck drivers (regardless of size of truck driven) is covered by the classifications of truck driver.



To: Board of Trustees  
From: Karl Gnadt, Managing Director  
Date: 6/27/2018  
Subject: DRES Special Services Agreement

---

- A. Introduction** – This Agreement is for transportation services for University of Illinois students with disabilities going to and from locations on and within Campus.
- B. Recommended Action** – Staff recommends that the Board of Trustees authorize the Chair of the Board of Trustees to execute the agreement between the District and the University in the amount of \$382,623.
- C. Prior Trustee Action** – MTD has had an agreement with DRES since 1994.
- D. Advantages/Disadvantages** – Having DRES perform the transportation services directly for the University of Illinois students with disabilities allows those customers to receive a much greater degree of personalized service. DRES knows their students and their needs better than the District ever could.
- E. Summary** – MTD is able to use Downstate Operating funds to pay for 65% of the total DRES special services transportation. This benefits the University as they are reimbursed the full 65% amount. It also allows for the higher level of service for the students that they receive via DRES. And finally, it allows the District to be in full compliance with DOT and ADA regulations.

RESOLUTION NO. 2018-3

A RESOLUTION  
APPROVING AN INTERGOVERNMENTAL AGREEMENT BETWEEN THE BOARD OF TRUSTEES OF  
THE UNIVERSITY OF ILLINOIS FOR THE UNIVERSITY OF ILLINOIS AT URBANA CHAMPAIGN  
DIVISION OF DISABILITY RESOURCES AND EDUCATIONAL SERVICES AND  
THE CHAMPAIGN-URBANA MASS TRANSIT DISTRICT

BE IT RESOLVED by the Board of Trustees of the Champaign-Urbana Mass Transit District  
as follows:

Section 1. That the agreement attached hereto entitled "Intergovernmental  
Agreement" between the Champaign-Urbana Mass Transit District and The Board of Trustees of  
the University of Illinois is hereby approved.

Section 2. That the Managing Director, or the Managing Director's designee, is hereby  
authorized to execute the agreement in substantially the same form as approved in Section 1  
above.

This Resolution is hereby passed by the affirmative vote, the "Ayes" and "Nays" being  
called, of a majority of the members of the Board of Trustees of the Champaign-Urbana Mass  
Transit District at a duly called regular meeting of the said Board of Trustees on the \_\_\_\_ day of  
\_\_\_\_\_, 2018.

"Ayes" \_\_\_\_\_

"Nays" \_\_\_\_\_

CHAMPAIGN-URBANA MASS TRANSIT  
DISTRICT,

BY: \_\_\_\_\_  
Bradley Diel, Chair

APPROVED by the Board of Trustees of the Champaign-Urbana Mass Transit District

this \_\_\_\_\_ day of \_\_\_\_\_, 2018.

CHAMPAIGN-URBANA MASS  
TRANSIT DISTRICT,

BY: \_\_\_\_\_  
Jack Waaler, Secretary

## **INTERGOVERNMENTAL AGREEMENT**

This Intergovernmental Agreement (“Agreement”) is between **The Board of Trustees of the University of Illinois**, a body corporate and politic of the State of Illinois, for the University of Illinois at Urbana Champaign Division of Disability Resources and Educational Services (“Illinois”), and **the Champaign-Urbana Mass Transit District**, an Illinois municipal corporation (“MTD”).

### **BACKGROUND AND PURPOSE**

- A.** The Americans with Disabilities Act of 1990 and its companion regulations prohibit entities from discriminating against individuals with disabilities in the provision of transportation. (49 CFR part 37)
- B.** MTD is a local mass transit district and municipal corporation created under authority of the Local Mass Transit District Act (70 ILCS 3610/3) to serve the mass transportation needs of the Urbana and Champaign communities.
- C.** Illinois, through its Disability Resources and Education Services (“DRES”), provides bus services to students with disabilities at the University of Illinois at Urbana-Champaign.
- D.** The General Assembly has encouraged the development of cooperative programs among government entities in the use of equipment and services to serve the transportation needs in public service programs. (20 ILCS 2705/2705-215)
- E.** Since 1994, the parties have cooperated by intergovernmental agreement to provide transportation services to mobility-limited individuals with disabilities in the Illinois campus area in a manner that qualifies for operating assistance through the Downstate Public Transportation Act, 30 ILCS 740, and its companion regulations at 92 Ill. Adm. Code 653 (“Downstate Grant”).
- F.** This Agreement terminates and replaces the parties’ 1994 Intergovernmental Agreement and is made under authority of the Illinois Intergovernmental Cooperation Act (5 ILCS 220/5).

### **TERMS OF AGREEMENT**

#### **1.0 PROVISION OF BUS SERVICE**

1.1 MTD will offer regular bus service on the Illinois campus for persons with disabilities, and Illinois, acting as MTD’s subcontractor, will provide the bus service as further described below.

1.2 MTD will establish the bus routes in consultation with Illinois. The specific routes and schedules are available on the DRES website at <http://www.disability.illinois.edu/getting-around/buses>. MTD and Illinois shall discuss any schedule or route revisions prior to implementation, provided that MTD shall have sole authority to approve such revisions.

1.3 Illinois shall provide MTD a monthly report documenting the ridership/usage of DRES buses by the 15th day of the month following the reporting period. Illinois will supply to the MTD any other relevant information requested by the MTD to facilitate successful completion of grant applications related to the provision of the bus services, including but not limited to the Downstate Grant, for which MTD shall apply annually in accordance with the program regulations.

1.4 Illinois shall purchase the equipment and employ the necessary labor to operate the buses necessary to service the routes. The number of buses employed shall be at the sole discretion of DRES and shall be based upon DRES operations, trends, and number of student riders. Drivers of DRES buses shall be Illinois employees and not MTD employees. All drivers shall be subject to Illinois' supervision and control.

1.5 Illinois will comply with its Random Drug and Alcohol Testing Protocol, attached as **Exhibit B**, and with federal and state laws relating to drug and alcohol use and procedures for DOT random drug and sobriety checks.

1.6 Illinois may collect fares from riders on DRES buses. The total of such fares collected shall be reported to MTD as further described in Article 4.0.

## **2.0 BUS STORAGE AND MAINTENANCE**

2.1 MTD shall provide to Illinois indoor four 35-foot parking spaces, to be designated by MTD, in MTD's principal garage facility located at 803 East University Avenue, Urbana, IL 61802, for the storage and parking of DRES buses.

2.2. Illinois shall be responsible for the delivery and parking of the buses in and retrieval from the designated indoor spaces on the property of the MTD in accordance with MTD standards and instructions.

2.3 MTD shall perform maintenance on DRES buses in accordance with the Intergovernmental Agreement for the Maintenance and Repair Services of University-owned Vehicles entered into December 16, 2016 and attached as **Exhibit C**.

## **3.0 TERM AND TERMINATION**

This Agreement is effective on signature date of the last party to sign ("Effective Date") and will continue in effect until terminated. Either party may terminate this Agreement

with 30 days' advance written notice to the other. In the case of a dispute or alleged breach of this Agreement, the parties shall use good faith efforts to timely resolve their differences. If a resolution is not reached within 30 days after notice of dispute or alleged breach, then the matter shall be escalated to the Chair of the MTD Board of Trustees and the University of Illinois Chancellor for resolution. Failing resolution after a reasonable period, and upon notice from one party to the other, the parties shall submit the matter to non-binding mediation, with expenses to be shared equally, or else provide six months' notice of termination. The parties may resort to litigation only upon exhaustion of these administrative measures, and during any dispute, the parties will continue to perform the Agreement as written so as not to disrupt the services.

#### **4.0 COMPENSATION AND PAYMENT SCHEDULE**

4.1 Exhibit A to this Agreement sets forth the operating expenses eligible for payment under the Downstate Grant program. Each year, as part of the Downstate Grant application process, the parties shall review and revise, as needed, the operating expenses utilizing form **Exhibit A-1** to this Agreement. The Managing Director of MTD and Director of DRES are authorized to approve the new Exhibit from year to year.

4.2 Illinois shall compensate MTD:

- (a) for access to MTD's specialized bus services for persons with disabilities, an annual amount equal to 35 percent of the system costs set forth in Exhibit A. If Illinois collects any fares pursuant to Section 1.6, Illinois will report to MTD the total fares collected and apply the fares toward the amount due under this Section 4.1(a);
- (b) \$9,221 annually for four indoor parking spaces described in Section 2.1; and
- (c) the cost of all maintenance performed on DRES buses per Section 2.3.

4.2 MTD shall compensate Illinois the total costs set forth in Exhibit A in consideration for the subcontracting services provided by Illinois.

4.3 MTD will pay Illinois the amount described in 4.2 in monthly installments calculated by dividing the total costs by 12, less 1/12 of the amounts in 4.1(a) and (b) and less (c) the cost of maintenance performed on DRES buses in the previous month.

#### **5.0 INSURANCE**

Illinois shall provide a Certificate of Insurance naming the MTD and its Board of Trustees as an additional insured under the general liability and auto liability provided by an insurance company with a current Best's Rating of B+:IV or better, or that is approved by the University of Illinois Office of Risk Management. This Certificate of Insurance must be



received and approved by MTD before commencement of operations. The Certificate must evidence the following minimum limits of coverage during the term of this Agreement:

- 5.1 Workmen's Compensation (including Occupational Disease) the statutory amount;
- 5.2 Employer's Liability: \$1,000,000;
- 5.3 General Liability: \$1,000,000 per occurrence, \$2,000,000 aggregate; and
- 5.4 Automobile Liability: \$5,000,000 per occurrence

Subcontractors, if approved by MTD, must comply with the same insurance coverage requirements as Illinois. Certificates of Insurance should be sent to: Champaign-Urbana Mass Transit District, 1101 E. University Ave., Urbana, IL 61801.

## **6.0 GENERAL PROVISIONS**

### **6.1. Non-exclusivity**

This Agreement is nonexclusive. Either party may, without notice to the other, offer other services of the same or similar nature.

### **6.2. Amendment**

No proposed amendment to this Agreement shall be valid unless made in a writing properly executed by the parties.

### **6.3. Assignment/Subcontracting**

Neither party may subcontract or assign its rights or obligations under this Agreement without the express written consent of the other. Any attempt to do so without consent shall be void.

### **6.4. Waiver**

Either party's failure in any one or more instances to insist upon strict performance of any provision of this Agreement or to exercise any right shall not be construed as a waiver. Any express waiver of a provision of this Agreement shall not be effective unless made in a writing properly executed by the waiving party.

### **6.5 Severability**

The invalidity or unenforceability of any provision of this Agreement shall not affect the validity of the remaining provisions. Any invalid or unenforceable provision shall be deemed severed from this Agreement to the extent of its invalidity or unenforceability.

### **6.6 Use of Names**

Neither party will use the name of the other party in any form of advertising or publicity without the express written permission of the other party. MTD must seek permission from Illinois by submitting the proposed use, well in advance of any deadline, to the Associate Chancellor for Public Affairs, University of Illinois, 501 East Green Street,

Champaign, IL 61820, [publicaffairs@illinois.edu](mailto:publicaffairs@illinois.edu). Illinois shall seek permission from MTD by submitting the proposed use, well in advance of any deadline, to the Marketing Manager, Champaign-Urbana Mass Transit District, 1101 East University Avenue, Urbana, IL 61801; fax (217) 384-8215.

#### **6.7 Nondiscrimination**

Neither party will engage in discrimination or harassment against any person because of race, color, religion, sex, national origin, ancestry, age, marital status, disability, sexual orientation, unfavorable discharge from the military, or status as a disabled veteran or a veteran of the Vietnam era and will comply with all applicable nondiscrimination, equal opportunity, and affirmative action laws. This Agreement incorporates the Equal Employment Opportunity Clause at 44 Ill. Adm. Code Section 750, Appx. A.

#### **6.8 Counterparts/Facsimile Signatures**

The parties may sign this Agreement in one or more counterparts, each of which constitutes an original and all of which together constitute the Agreement. Facsimile signatures constitute original signatures for all purposes.

#### **6.9 Notices**

All notices and other correspondence contemplated or required by this Agreement shall be directed to the parties at the following addresses and shall be valid upon actual receipt:

MTD:	Karl Gnadt, Managing Director MTD 1101 East University Avenue Urbana, IL 61802 ManagingDirector@cumtd.com
Illinois:	Patricia Malik, Director Disability Resources and Educational Services University of Illinois at Urbana-Champaign 1207 South Oak Street Champaign, IL 61820 pmalik@illinois.edu
With a copy to:	Contract Services Office 3d Floor Coble Hall 801 South Wright Street Champaign, IL 61820 UrbanaCSO@uillinois.edu

#### **6.10 Ambiguities**

Any rule of construction to the effect that ambiguities are resolved against the drafting party shall not apply in interpreting this Agreement.

#### **6.11 Integration**

This Agreement with all exhibits, attachments, amendments, and documents incorporated by reference shall constitute the entire agreement between the parties and supersedes all prior communications and writings concerning the same subject matter. The “Background and Purposes” section of this document forms a part of the terms of agreement.

#### **6.12 Authorized Signatories**

The individuals signing this Agreement on a party’s behalf represent that they have the requisite authority and intent to bind that party to this Agreement.

**THE BOARD OF TRUSTEES  
OF THE UNIVERSITY OF ILLINOIS**

**CHAMPAIGN-URBANA MASS  
TRANSIT DISTRICT**

By: \_\_\_\_\_  
Avijit Ghosh, Comptroller

By: \_\_\_\_\_  
Karl Gnadt, Managing Director

Date: \_\_\_\_\_

Date: \_\_\_\_\_

**EXHIBIT A**  
**Estimated Cost Breakdown for FY19**

<b>Personnel</b>	<b>FY19</b>
AP Salary	\$ 61,297
Director (5%)	\$ 5,670
Accounting Associate (10%)	\$ 5,031
Staff Salary	\$ 200,077
<b>Total Personnel</b>	<b>\$ 272,057</b>
<b>Materials/Supplies</b>	
Office Supplies	\$0
IT Supplies	\$0
Equipment	\$0
<b>Total Materials/Supplies</b>	<b>\$0</b>
<b>Services</b>	
Mail	\$0
Repairs	\$0
Gas/Oil/Antifreeze	\$ 5,752
Marketing	\$0
Bus Storage	\$ 9,221
Pager Charges	\$ 242
Video Services	\$0
Software	\$0
Insurance	\$ 9,221
Inspections	\$ 207
Other General Services	\$0
Operating Fees (MTD ADA)	\$ 82,396
Printing	\$0
Communications	\$ 106
<b>Total Services Equipment</b>	<b>\$ 110,556</b>
Buses	\$0
<b>Total Equipment</b>	<b>\$0</b>
<b>TOTAL EXPENSES</b>	<b>\$ 382,623</b>

**EXHIBIT A-1**  
**Estimated Cost Breakdown for FY\_\_**

<b>Personnel</b>	<b>FY__</b>
AP Salary	
Director (5%)	
Accounting Associate (10%)	
Staff Salary	
<b>Total Personnel</b>	
<b>Materials/Supplies</b>	
Office Supplies	
IT Supplies	
Equipment	
<b>Total Materials/Supplies</b>	
<b>Services</b>	
Mail	
Repairs	
Gas/Oil/Antifreeze	
Marketing	
Bus Storage	\$ 9,221
Pager Charges	
Video Services	
Software	
Insurance	
Inspections	
Other General Services	
Operating Fees (MTD ADA)	
Printing	
Communications	
<b>Total Services Equipment</b>	
Buses	
<b>Total Equipment</b>	\$0
<b>TOTAL EXPENSES</b>	

**DISABILITY RESOURCES & EDUCATIONAL SERVICES**

By: \_\_\_\_\_

Name: \_\_\_\_\_

Title: Director

Date: \_\_\_\_\_

**CU MASS TRANSIT DISTRICT**

By: \_\_\_\_\_

Name: \_\_\_\_\_

Title: Managing Director

Date: \_\_\_\_\_

# EXHIBIT B

## **University of Illinois Division of Disability Resources and Educational Services Random Drug & Alcohol Testing Protocol**

Effective February 1, 2008 DRES Disability Transportation Specialist employees will be included in the CUMTD random testing pool. The DRES program manager will provide the necessary information on all DRES employees that are considered safety-sensitive to CUMTD for the purpose of including DRES employees into the CUMTD random computer pool.

1. Carle Occupational Medicine is the testing site for DRES and CUMTD employees.
2. Carle Occupational Medicine generates the random monthly testing dates for the CUMTD program manager.
3. CUMTD Accounting Department (senior and junior comptrollers) using the "Fleetnet" payroll computer system at CUMTD makes random selections of the updated DRES/CUMTD random pool per orders from the CUMTD program manager.
4. Should CUMTD program manager be selected for random testing, a non-selection random list will be sent to the program manager and the actual random selection list with the program manager's name on it at the top of the list will be sent to the CUMTD alternate program manager for scheduling.
5. The CUMTD program manager will issue an "Order-to-Test" form for a CUMTD or DRES employee selected for random testing.
6. CUMTD employees are escorted to the testing site by a supervisor and picked up following the test to return to work.
7. DRES employees will drive their bus to the CUMTD bus barn and will be escorted to the testing site by a CUMTD supervisor and picked up by a CUMTD supervisor who will escort them to the CUMTD bus barn following the test to return to work.
8. CUMTD or DRES employees, selected for random testing at the top of the random selection list, will be tested on the random date selected by Carle Occupational Medicine during the CUMTD or DRES employee's work shift.

Should the CUMTD or DRES employee be legitimately unavailable for testing on the random test date (i.e., sick, excused, vacation, etc...), the CUMTD program manager will select the nearest date following the original random selection date to test the employee.

Should the CUMTD or DRES employee be legitimately unavailable for testing on the random test date and for the remainder of the testing period (month), the CUMTD program manager will then go to the "Next-on-the-list" of the random selection.

9. CUMTD/DRES is testing at 25% of the total workforce per year for Drug abuse and 10% of the total work force per year for Alcohol misuse. The CUMTD program manager will follow the FTA regulations for testing rates which will be re-evaluated on an annual basis. Any changes to the testing rate will require immediate notification to DRES program manager.

10. The DRES program manager will designate an alternate program manager to be made known to the CUMTD program manager.

11. The CUMTD program manager will contact the DRES program manager during regular office hours (Monday through Friday, 7:30am-4:30pm), for DRES employees that are selected for testing. During non-office hours, the CUMTD program manager will contact the Head Disability Transportation Specialist for DRES employees that are selected for testing.

12. The CUMTD program manager will contact the alternate program manager during regular DRES office hours, if the DRES program manager is not available.

13. The CUMTD program manager will maintain a master log of all random testing for CUMTD and DRES employees.

14. Carle Occupational Medicine will send copies of all testing of DRES employees to the CUMTD program manager and the DRES program manager.

15. CUMTD and DRES employees are subject to unannounced and unpredictable random testing during all hours of service.

CUMTD DAPM Signature: James S. Dixon

Date of Approval: 02-11-2008

DRES DAPM Signature: Mylinh E. Q

Date of Approval: 2/8/08

Effective Date of Implementation: 02/18/2008

**EXHIBIT C**

**Intergovernmental Agreement between Board of Trustees of the University of Illinois  
and CUMTD for the Maintenance and Repair Services of University-owned Vehicles.**



## Champaign Urbana Mass Transit District (CUMTD)

### INTERGOVERNMENTAL AGREEMENT between the Board of Trustees of the University of Illinois and CUMTD for the Maintenance and Repair Services of University-owned Vehicles.

This Agreement is made by and between the Board of Trustees of the University of Illinois, a body corporate and politic of the State of Illinois, through its Disability Resources and Educational Services ("DRES" and collectively "University"), and the Champaign-Urbana Mass Transit District with offices at 1101 East University, Urbana, Illinois ("CUMTD") (collectively the "Parties").

WHEREAS, DRES provides bus services to mobility-limited disabled students of the Urbana-Champaign campus at the University on a regular and continuing basis;

WHEREAS, since on or about 1994, the University, through DRES, provides regular bus service for disabled mobility-limited persons over routes established by the CUMTD on the Urbana-Champaign University campus pursuant to an intergovernmental agreement executed between the Parties on August 5, 1994;

WHEREAS, such University DRES vehicles ("DRES Vehicles") need preventative and regular maintenance services and CUMTD possesses the qualifications and materials to perform such services, as further provided in this Agreement;

NOW, THEREFORE, the Parties agree as follows:

1. CUMTD agrees to provide to University certain services as requested and agreed to by University, through DRES, in accordance with the "Work Order" in the form, attached hereto and incorporated here in as "Exhibit A," and the terms and conditions set forth below. Any additional or changed services will need to be mutually agreed to by the Parties pursuant to Section 13 of this Agreement.
2. CUMTD agrees to provide the services at the rates set forth in Exhibit A. All prices are F.O.B. job site. Labor associated with the services in Exhibit A reflects normal standard working hours. Non-standard hours quoted upon request. The Parties acknowledge that the rates set forth in Exhibit A are premised on the current level of support provided to CUMTD by the State of Illinois as set forth in the Downstate Public Transportation Act (30 ILCS 740/1-1 et. seq.) ("the Act"). If at any time after the execution of this Agreement state reimbursement to CUMTD is reduced from its current 65% level contained in the Act, CUMTD shall immediately notify University in writing and, unless University decides to terminate this Agreement pursuant to Section 10, the rates in Exhibit A shall be increased in proportion to the decreased funding per the act, as illustrated in Exhibit A, Paragraph B. The Parties shall execute an amendment to this Agreement to memorialize the new rates as provided in Section 13 of this Agreement.
3. CUMTD is a recipient of funds through the Federal Transit Administration for the purpose of providing public transportation. This Agreement is incidental to that purpose and shall not detract from CUMTD's ability to provide maintenance for CUMTD operations. University agrees that CUMTD shall, at its sole discretion, determine scheduling of repairs and that maintenance of CUMTD vehicles will take priority over University DRES Vehicles. Specifically, CUMTD shall prioritize all services under this Agreement as follows: CUMTD, C-CARTS, DRES, Danville Mass Transit, CRIS. If DRES Vehicles requires emergency maintenance and CUMTD is unable to perform repairs within three working days, Illinois

reserves the right to obtain servicing from a third party. CUMTD agrees to only use Arboc brand products on DRES Vehicles.

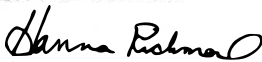
4. CUMTD shall invoice DRES directly for services and not through any other University of Illinois Department and no other Department will be responsible for paying invoices. DRES shall pay CUMTD within thirty days of the date of DRES' receipt of CUMTD's invoice. Delinquent accounts will bear interest at the highest rate allowable by law or 1.5% per month, whichever is greater.
5. CUMTD shall maintain records of services provided to University for three years from the date of service and will provide a copy to University on request.
6. CUMTD shall not be responsible for failure to render any of the services set forth in Exhibit A due to causes beyond its control, including without limitation labor strikes, labor disputes, and acts of God.
7. The warranty on any part or product used in the performance of CUMTD's services under this Agreement is limited to the warranty provided by the manufacturer. CUMTD EXPRESSLY DISCLAIMS ALL WARRANTIES, WHETHER EXPRESS OR IMPLIED, INCLUDING ANY IMPLIED WARRANTY OF MERCHANTABILITY OR FITNESS FOR A PARTICULAR PURPOSE regarding parts or products used in the performance of services pursuant to this Agreement. Notwithstanding the foregoing, CUMTD warrants that all services performed under this Agreement shall be free from defects in workmanship and conform to the requirements of the Agreement.
8. Except as provided in Section 7, NEITHER CUMTD NOR UNIVERSITY MAKES ANY REPRESENTATION OR WARRANTY OF ANY KIND, ORAL OR WRITTEN, EXPRESS OR IMPLIED, WITH RESPECT TO THE DRES VEHICLES SERVICED HEREUNDER, ITS CONDITION OR ITS FITNESS FOR A PARTICULAR PURPOSE. THERE ARE NO WARRANTIES OR GUARANTEES AS TO THE AVAILABILITY OF OR LOSS OF THE USE OF THE DRES VEHICLES SERVICED UNDER THIS AGREEMENT. NEITHER UNIVERSITY NOR CUMTD IS LIABLE FOR LOSS OF USE, DOWN-TIME, OR ANY SPECIAL, INDIRECT, INCIDENTAL, PUNITIVE OR CONSEQUENTIAL DAMAGES, INCLUDING LOSS OF USE OR PROFITS, ARISING UNDER THIS AGREEMENT.
9. This Agreement may not be assigned without the written consent of the other party.
10. Term and Termination. Unless terminated earlier as provided herein, the term of this Agreement commences on the last date of signature of the parties ("Effective Date") and shall terminate twenty-four months thereafter. Either Party may terminate this Agreement upon thirty days' advance written notice to the other Party, except for the material breach by one Party, in which case this Agreement shall immediately terminate thirty days from the other Party's notice of breach unless cured by the breaching Party prior to the end of such thirty day notice period.
11. Amendments and Modifications. Any amendments or modifications to the services to be performed under this Agreement or the applicable rates for such services shall only be effective through a written amendment to Exhibit A of this Agreement.
12. CUMTD and University are entitled to all of the immunities and defenses provided by law as they respectively apply to the parties, including those provided in (745 ILCS 10/) Local



Governmental and Governmental Employees Tort Immunity Act, and Court of Claims Act (705 ILCS 505) as they relate to any action arising under this Agreement.

13. Neither Party to this Agreement shall be legally liable for any negligence or wrongful acts, either of commission or omission, chargeable to the other, unless such liability is imposed by law. This Agreement shall not be construed as seeking to either enlarge or diminish any obligation or duty owed by one party against the other or against third parties.
14. Insurance. CUMTD acknowledges and agrees that CUMTD maintains insurance in conformance with the requirements set forth in Section 4.1 of the agreement titled "Agreement Between Champaign-Urbana Mass Transit District and The University of Illinois at Urbana-Champaign for Student Transit Services and Campus Circulator Services" executed by the Parties on June 20, 2016 ("Transit Services Agreement"). The Transit Services Agreement is incorporated herein by reference for purposes of incorporating CUMTD's insurance requirements pursuant to Section 4.1 of such agreement.
15. Governing Law. This Agreement shall be governed by and construed in accordance it the law of the State of Illinois, excluding its conflict of laws provisions.
16. Party Status. Neither Party is agent, employee, legal representative, partner or joint venture of the other. Neither party has the power or right to bind or commit the other.
17. This Agreement regarding the services performed under this Agreement for DRES Vehicles contains the entire agreement between the Parties and supersedes all previous communications between the Parties. The terms of this Agreement are contractual and not a mere recital. No modification shall be binding on any of the Parties hereto unless it has been agreed to by all the Parties in writing, signed by them and identified as an amendment to this Agreement.
18. The unenforceability of invalidity of any provision of this Agreement shall not affect the enforceability or validity of any other provision of this Agreement.
19. This Agreement may be executed in multiple counterparts, each of which shall be recognized as an original signature.
20. This Agreement may be executed with signatures delivered by either facsimile or scanned email and copies of such signatures so delivered shall be deemed as originals.

BOARD OF TRUSTEES OF THE  
UNIVERSITY OF ILLINOIS

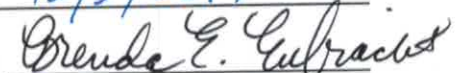
By:   
Walter K. Knorr  
Walter K. Knorr, Comptroller

Date: December 16, 2016

CHAMPAIGN-URBANA MASS  
TRANSIT DISTRICT

By:   
Karl Gnadt, Managing Director

Date: 12/9/2016

Attest:   
Chief Administrative Officer

**EXHIBIT A**

Work Order  
to  
Intergovernmental Agreement dated \_\_\_\_\_, 2016  
between  
Champaign-Urbana Mass Transit District  
and  
The Board of Trustees of the University of Illinois, on behalf of its Disability Resources and Educational  
Services ("University")

DRES Contact: \_\_\_\_\_  
Telephone Number: \_\_\_\_\_  
E-Mail: \_\_\_\_\_

**A. Champaign Urbana Mass Transit District shall perform the following services:**

1. CUMTD will perform all preventative maintenance requested by University at the actual hourly rate of \$45.64.
2. CUMTD will charge the cost of any required parts at current pricing.
3. CUMTD will perform all mechanical repair work requested by University at the hourly of \$45.64.
4. CUMTD will perform any body shop repair work requested by University at the hourly rate of \$45.64.
5. CUMTD will perform any road calls requested by the University at the hourly rate of \$45.64.
6. CUMTD will fuel University vehicles as requested by University. The cost per gallon will be calculated as a monthly average based on overall CUMTD fuel purchases.
7. CUMTD will wash, sweep, and empty the trash of each University vehicle every time it is fueled. Each wash will be charged at \$3.00 per vehicle.

**B. In the event rates must increase in proportion to the decrease of state funds pursuant to the Act, the following table illustrates how such rates will be calculated:**

FY2015-FY2016 Audited Fully Allocated Cost Per Hour	Level of State Reimbursement	Local Share = Cost To Customer	Hourly Rate Charged to Customer
\$127.22	65%	35%	\$44.53
\$127.22	60%	40%	\$50.89
\$127.22	55%	45%	\$57.25