



## CHAMPAIGN-URBANA MASS TRANSIT DISTRICT BOARD MEETING

### AGENDA

Wednesday, July 25, 2018 – 3:00 p.m.

---

Champaign City Council Chambers  
102 North Neil Street, Champaign

#### **Board of Trustees:**

Dick Barnes

Linda Bauer

Bradley Diel – Chair

Margaret Chaplan – Vice Chair

Matthew Cho

James Faron

Bruce Hannon

#### **Advisory Board:**

Lowa Mwilambwe/Brian Farber

Jacob Rajlich

	<u>Pages</u>
1. Call to Order	
2. Roll Call	
3. Approval of Agenda	
4. Audience Participation	
5. Approval of Minutes	
A. Board Meeting – June 27, 2018	1-3
6. Communications	
7. Reports	
A. Managing Director	
1) Operating Notes	4-6
2) Ridership Data	7-8
3) Route Performance	9-11
4) District Operating Revenue/Expenses	12
5) Illinois Terminal Operating Revenue/Expenses	13
6) Statistical Summary	14
7) Budget Analysis	15-25
8) Accounts Payable/Check Disbursements	26-33
9) C-CARTS Quarterly Report	34
10) Morgan Stanley Statement	36-41
B. Board Committees	
1) Administration	
2) Facilities	
3) Service Delivery	



## CHAMPAIGN-URBANA MASS TRANSIT DISTRICT BOARD MEETING

### AGENDA

Wednesday, July 25, 2018 – 3:00 p.m.

---

Page 2

	<u>Pages</u>
8. Action Items	
A. Semi-Annual Review of Closed Session Minutes	42-46
9. Next Meeting	
A. Regular Board of Trustees Meeting – Wednesday, August 29, 2018 – 3:00 p.m. at Champaign City Council Chambers – 102 North Neil Street, Champaign	
10. Adjournment	

*Champaign-Urbana Mass Transit District strives to provide an environment welcoming to all persons regardless of disability, race, gender, or religion. Please call Beth Brunk at 217-384-8188 to request special accommodations **at least 2 business days in advance.***



## Champaign-Urbana Mass Transit District (MTD) Board of Trustees Meeting

### MINUTES – SUBJECT TO REVIEW AND APPROVAL

DATE: Wednesday, June 27, 2018  
TIME: 3:00 p.m.  
PLACE: Champaign City Council Chambers  
102 North Neil Street, Champaign, IL

The video of this meeting can be found at:

<https://www.youtube.com/CUMTD>

#### Trustees:

Present	Absent
Dick Barnes	
Linda Bauer	
Bradley Diel (Chair)	
Margaret Chaplan (Vice-Chair)	
Matthew Cho	
James Faron	
Bruce Hannon	

#### Advisory Board:

Present	Absent
	Brian Farber
Jacob Rajlich	

**MTD Staff:** Karl Gnadt (Managing Director), Amy Snyder (Customer Service Director), Eric Broga (Maintenance Director), Jane Sullivan (Grant Manager/Sustainability Planner), Lisa Meid (Media Manager), Jolene Gensler (Comptroller), Kirk Kirkland (Facilities Director), Fred Stavins (Counsel), Beth Brunk (Clerk)

#### Others Present:

### MINUTES

#### 1. Call to Order

Chair Diel called the meeting to order at 3:00 p.m.

#### 2. Roll Call

A verbal roll call was taken, and a quorum was declared present.

#### 3. Approval of Agenda

**MOTION** by Ms. Chaplan to approve the agenda as distributed; seconded by Ms. Bauer. Upon vote, the **MOTION CARRIED** unanimously.

#### 4. Public Hearing on the Budget and Appropriation Ordinance for FY2019

Mr. Diel asked for public input on the Tentative Budget and Appropriation Ordinance for the period from July 1, 2018 to June 30, 2019. Beginning on May 24, 2018, the proposed Budget was available for public

inspection on MTD's website and at the Administrative Offices at 1101 East University Avenue in Urbana. Notice of this Public Hearing was posted in *The News Gazette* on May 24, 2018. Mr. Diel opened the floor for public comment. There was no public input.

**MOTION** by Ms. Chaplan to close the Public Hearing on the Budget and Appropriation Ordinance for FY2019; seconded by Ms. Bauer. Upon vote, the **MOTION CARRIED** unanimously.

## 5. Audience Participation

None

## 6. Approval of Minutes

### A. Board Meeting – May 30, 2018

**MOTION** by Ms. Chaplan to approve the minutes of the May 30, 2018 MTD Board meeting as distributed; seconded by Mr. Barnes. Upon vote, the **MOTION CARRIED** unanimously.

## 7. Communications

Rabbi Schachter and Rabbi Tiechtel expressed their appreciation via email for MTD's assistance in moving a bus stop sign for an Eruv – a community shared space.

## 8. Reports

### A. Managing Director

Mr. Gnadt reviewed May's statistics for the District. Ridership was down 7.8% from May 2017. The Federal Transit Administration (FTA) has released the Notice of Funding Opportunity for the BUILD (replaced TIGER) and 5339 Bus & Bus Facilities grants. The District will be applying for both of these grants for the Illinois Terminal Expansion Project. The District is still waiting on IDOT concurrence for the Route Analysis Study.

### B. Board Committees

1) **Administration** – No report.

2) **Facilities** – No report

3) **Service Delivery** – No report

## 9. Action Items

### A. Ordinance 2018-2 – Budget & Appropriation Ordinance for FY2019

**MOTION** by Mr. Hannon to approve Ordinance 2018-2 – Budget and Appropriation Ordinance for the Champaign-Urbana Mass Transit District for fiscal year beginning July 1, 2018 and ending June 30, 2019; seconded by Ms. Chaplan.

Upon vote:

Aye (7) – Barnes, Bauer, Chaplan, Cho, Diel, Faron, Hannon

Nay (0)

**MOTION CARRIED.**

### B. Resolution 2018-2 – Ascertaining Prevailing Wages 2018-2019

This resolution approves and establishes the Illinois Department of Labor prevailing wage rates for Champaign County as the prevailing wage rate for any public works project coming under the jurisdiction of the District. The most current Illinois Department of Labor prevailing wage rates for Champaign County are dated September 1, 2017 and can be found at <https://www2.illinois.gov/idol/Laws-Rules/CONMED/Pages/2017-Rates.aspx>.

**MOTION** by Ms. Chaplan to adopt Resolution 2018-2, a Resolution Ascertaining Prevailing Wages for 2018-2019 using the Illinois Department of Labor prevailing wages for Champaign County as of September 1, 2017; seconded by Ms. Bauer.

Roll Call vote:

Aye (7) – Barnes, Bauer, Chaplan, Cho, Diel, Faron, Hannon

Nay (0)

**MOTION CARRIED.**

C. Resolution 2018-3 – Division of Disability Resources and Educational Services (DRES) Intergovernmental Agreement

This Intergovernmental Agreement is for curb-to-curb paratransit specialized service for students with disabilities on campus.

**MOTION** by Ms. Chaplan to authorize the Managing Director to execute the Intergovernmental Agreement between the District and the Board of Trustees of the University of Illinois in the amount of \$382,623 for paratransit service on campus; seconded by Ms. Bauer. Upon vote, the **MOTION CARRIED** unanimously.

Roll Call vote:

Aye (7) – Barnes, Bauer, Chaplan, Cho, Diel, Faron, Hannon

Nay (0)

**MOTION CARRIED.**

**10. Next Meeting**

- A. Regular Board of Trustees Meeting – Wednesday, July 25, 2018 3:00 p.m. at Champaign City Council Chambers – 102 North Neil Street, Champaign

**11. Adjournment**

**MOTION** by Ms. Chaplan to adjourn the meeting; seconded by Mr. Hannon. Upon vote, the **MOTION CARRIED** unanimously.

Mr. Diel adjourned the meeting at 3:20 p.m.

Submitted by:

\_\_\_\_\_  
Clerk

Approved:

\_\_\_\_\_  
Board of Trustees Chair

## MTD MANAGING DIRECTOR OPERATING NOTES

July, 2018

### RIDERSHIP

#### Monthly Ridership

■ FY2017  
■ FY2018  
■ 5 Year Average

424,219

435,993

472,546

June

↑ 2.78%  
↓ -7.74%

#### Year-to-Date Ridership

■ FY2017  
■ FY2018

12,099,043

11,528,385

12,651,813

Year-to-Date

↓ -4.72%  
↓ -8.88%

Ridership is up 2.8% from last June with one fewer weekday and one additional Saturday. Therefore, ridership would have been up more than that had there been the same number of days from this June to last June (maybe about 4.9% increase all things being equal). However, since ridership in June is low the real difference between this and last June was only 11,744 rides.

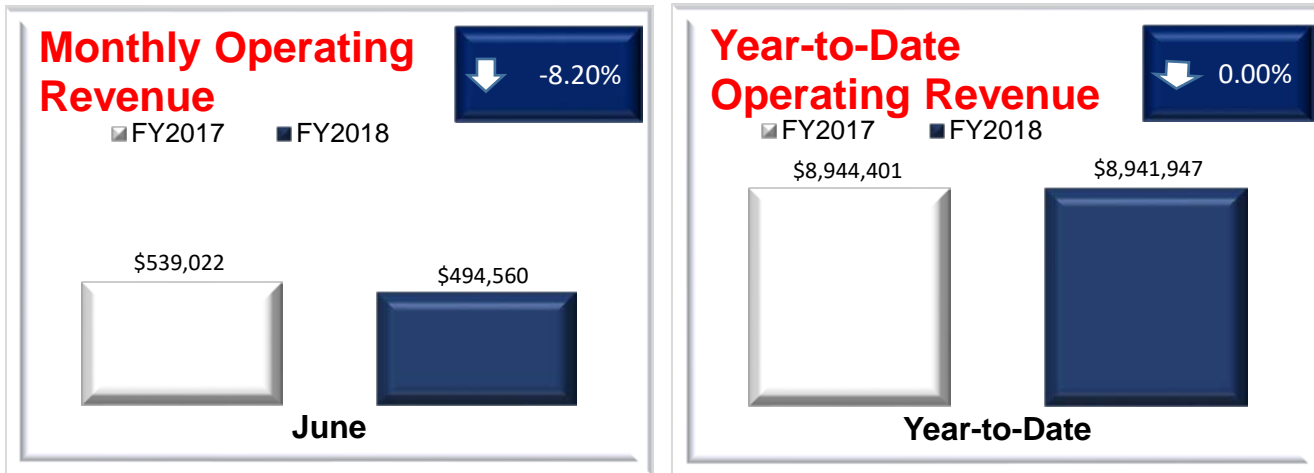
The work on MCORE continues so White Street, part of Wright Street and part of Green Street and the routes that serve those streets are still affected. Still, ridership has been up across all route categories, if just slightly.

This marks the end of FY2018 and the ridership totals have us down 4.7% at 11,528,385 compared to 12,099,043 last year. All fare categories were down except school rides which was up 2.3%. The largest portion of loss was with UI students at 343,000 of -3.9%, but of course that's the category most tightly linked to MCORE reroutes.

We had three fewer weekdays, one more Saturday and two more Sundays than in FY2017. This is mostly a result of the holiday schedule. Of course, this doesn't make up for all of the ridership loss, but it is worth a mention.

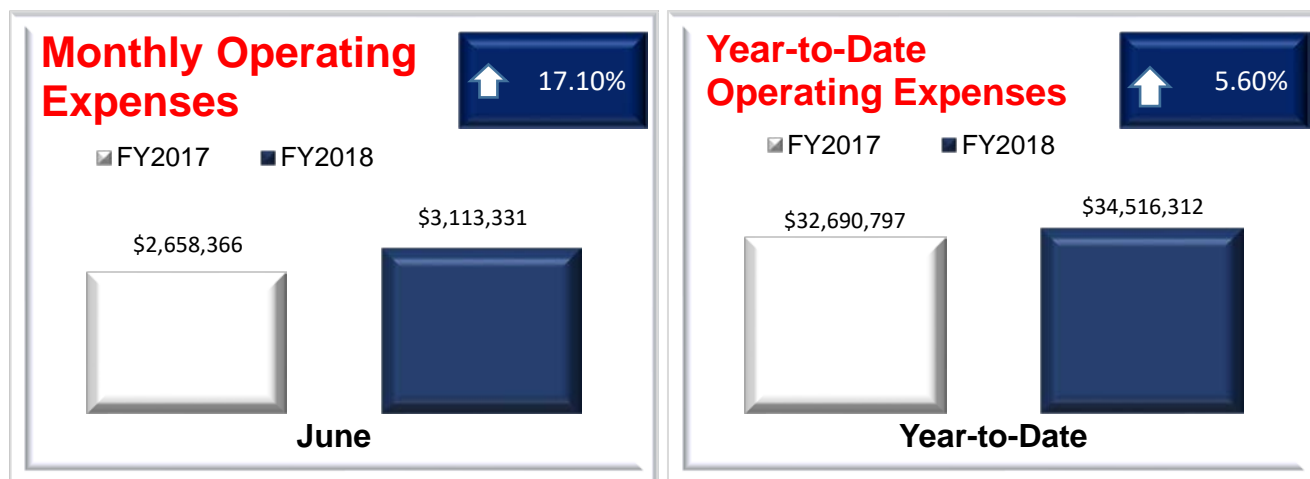
The overview of the year is that the ridership decline is still happening, in part due to MCORE which is in full swing, the introduction of designated stops system-wide in August, and the Navy was changed in Mid-February to accommodate Carle at the Fields.

## OPERATING REVENUE



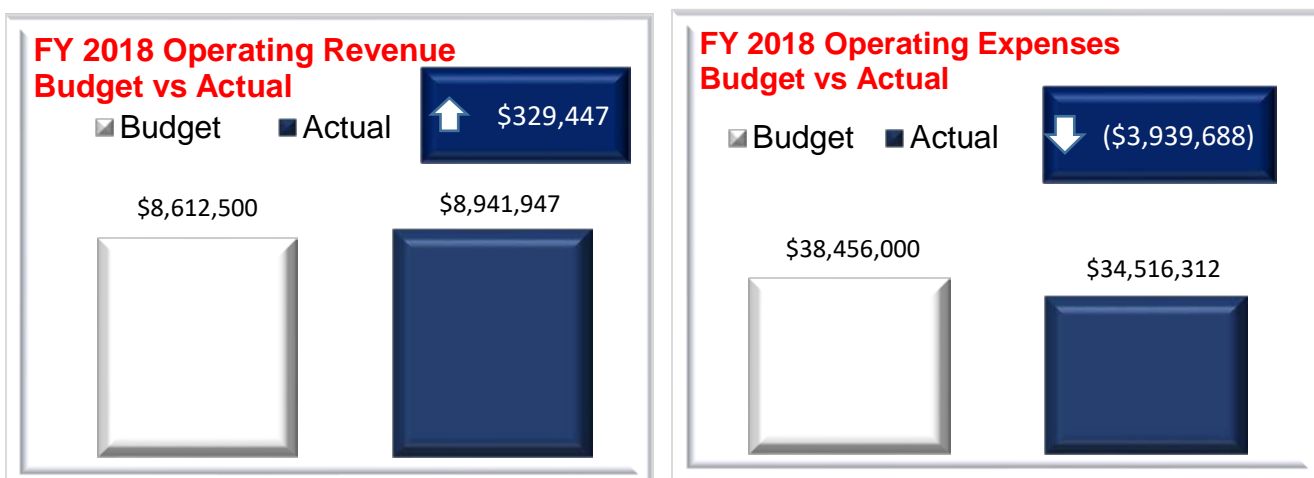
June, 2018 operating revenue was 8.2% below June, 2017, and year-to-date operating revenue was nearly identical to FY2017.

## OPERATING EXPENSES



June operating expenses were 17.1% above June, 2017. Year-to-date operating expenses were 5.6% above FY2017.

## YEAR-TO-DATE REVENUE & EXPENSES



Year-to-date operating revenues are \$329,447 above budget while operating expenses are \$3,939,688 under budget.

## MANAGING DIRECTOR'S NOTES

\*Proposals were opened on July 20, 2018 for the Microtransit/Demand Response app to be used with SafeRides and On-Demand service in SW Champaign. Proposals will be evaluated and select bidder demonstrations will be done over the next three weeks. Plans are to bring a contract for your approval to the August 29, 2018 board meeting.

\* IDOT has not been able to fulfill its promises to complete the grant execution regarding the route analysis. We continue to wait for their signatures so that we can get pre-bid concurrences. Then we will be able to issue the RFP after that.

## MAJOR EFFORTS

### Development Efforts

Illinois Terminal Expansion – The BUILD grant application was submitted on Thursday, July 19, 2018. We're very excited about it and the 5339 Bus & Bus Facility grant application that will be submitted very soon. We have begun discussions with the City to map out a structure regarding an Intergovernmental Agreement for the project, and we have begun to target the Development Agreement next.

Urbana Downtown Development – meetings are scheduled with Farnsworth and potential partners to review preliminary sketches.

### Route Analysis

As stated above, we are in a mode of waiting on IDOT.

### Ridership Study

Token Transit has installed the Bluetooth beacons on all of the buses, and we are now testing them.

## ONGOING PROJECTS

Staff continues to work on:

- MCORE – Construction and reroutes began again in June.
- Planning for moderate route/schedule changes in the Fall.
- Preparation of RFPs to bid out work for the H<sub>2</sub> Fuel Cell Project.



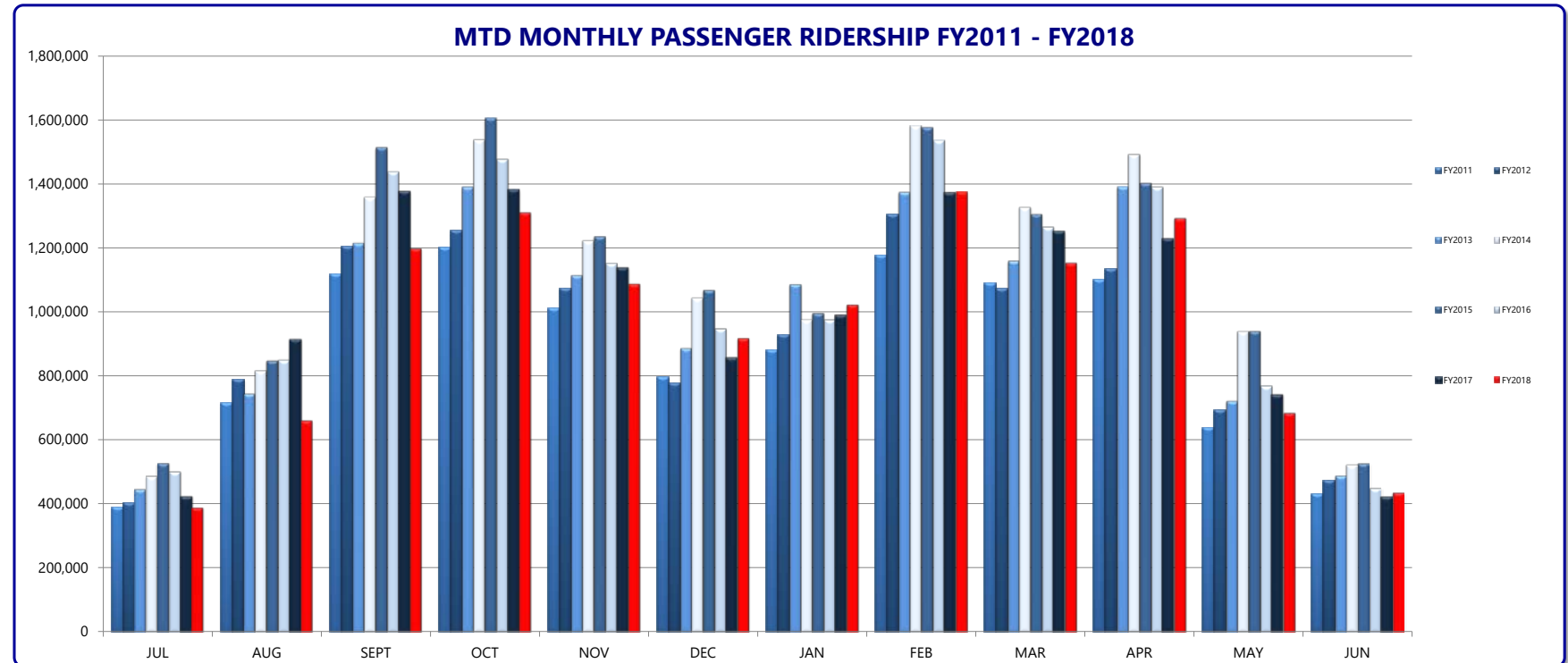
# Champaign-Urbana Mass Transit District

## Fiscal-Year-to-Date Ridership Comparison

	Jun-18	Jun-17	% Change	FY18 YTD	FY17 YTD	% Change
Adult Rides	39,299	32,867	19.6%	477,496	505,736	-5.6%
School Rides	3,547	4,207	-15.7%	405,155	396,197	2.3%
DASH/Senior - E & D Rides	49,085	49,522	-0.9%	586,547	618,837	-5.2%
U of I Faculty/Staff Rides	19,518	21,941	-11.0%	374,395	427,605	-12.4%
Annual Pass	51,376	66,081	-22.3%	759,173	969,910	-21.7%
U of I Student Rides	230,838	228,889	0.9%	8,506,976	8,849,976	-3.9%
All Day Passes	623	413	50.8%	7,267	9,333	-22.1%
Transfers	11,877	12,248	-3.0%	144,363	168,069	-14.1%
Saferides	0	0	0.0%	29,080	36,921	-21.2%
Monthly Pass	18,558	-	-	106,965	-	-
Veterans Pass	3,020	-	-	16,035	-	-
<b>Total Unlinked Passenger Ride:</b>	<b>427,741</b>	<b>416,168</b>	<b>2.8%</b>	<b>11,413,452</b>	<b>11,982,584</b>	<b>-4.7%</b>
Half-Fare Cab Subsidy Rides	1,173	1,344	-12.7%	15,467	16,940	-8.7%
ADA Rides	7,079	6,707	5.5%	99,466	99,519	-0.1%
<b>TOTAL</b>	<b>435,993</b>	<b>424,219</b>	<b>2.8%</b>	<b>11,528,385</b>	<b>12,099,043</b>	<b>-4.7%</b>

	Jun-18	Jun-17
Weekdays	21	22
UI Weekdays	0	0
Saturdays	5	4
UI Saturdays	0	0
Sundays	4	4
UI Sundays	0	0
Champaign Schools Days	0	0
Urbana School Days	0	0
Holidays	0	0
Average Temperature	76	74
Total Precipitation	6.99	1.56
Average Gas Price	\$2.82	\$2.09

	FY2011	FY2012	FY2013	FY2014	FY2015	FY2016	FY2017	FY2018
JUL	387,210	401,883	447,178	487,363	529,018	503,481	424,915	389,398
AUG	714,304	787,817	745,337	817,249	848,165	851,098	914,496	661,178
SEPT	1,117,050	1,203,512	1,215,967	1,358,928	1,514,019	1,439,491	1,375,803	1,197,928
OCT	1,201,806	1,254,804	1,391,576	1,538,309	1,606,340	1,478,275	1,380,990	1,310,380
NOV	1,011,472	1,073,953	1,115,234	1,223,026	1,236,071	1,153,897	1,137,573	1,087,343
DEC	797,556	777,617	887,209	1,044,064	1,068,608	949,030	857,837	917,782
JAN	881,575	927,630	1,086,962	975,863	996,469	977,223	989,700	1,022,713
FEB	1,177,828	1,305,142	1,374,653	1,582,330	1,576,687	1,537,540	1,371,778	1,375,553
MAR	1,089,206	1,073,789	1,160,228	1,327,336	1,305,425	1,266,676	1,251,352	1,153,015
APR	1,101,360	1,134,560	1,392,237	1,492,613	1,402,475	1,391,286	1,228,127	1,292,424
MAY	638,216	693,620	722,264	939,758	940,147	770,860	742,253	684,678
JUN	431,537	473,304	489,327	522,493	528,360	451,663	424,219	435,993
<b>TOTAL</b>	<b>10,549,120</b>	<b>11,107,631</b>	<b>12,028,172</b>	<b>13,309,332</b>	<b>13,551,784</b>	<b>12,770,520</b>	<b>12,099,043</b>	<b>11,528,385</b>



# Champaign-Urbana Mass Transit District

July 16, 2018

## Route Performance Report

June 2018

Weekdays

	Passengers	Percent of Group Ridership *	Revenue Hours	Passengers Per Revenue Hour	Revenue Hour Performance Comparison +	Revenue Miles	Passengers Per Revenue Mile	Revenue Mile Performance Comparison +
<b>Daytime Campus Fixed Route</b>	<b>85,787</b>		<b>2,218.0</b>	<b>38.7</b>		<b>24,257.1</b>	<b>3.5</b>	
1 YELLOWhopper	26,777	31.21%	500.4	53.51	1.38	5,140.8	5.21	1.47
10 GOLDhopper	17,625	20.55%	459.9	38.32	0.99	5,913.6	2.98	0.84
12 Teal	16,422	19.14%	482.6	34.03	0.88	5,285.7	3.11	0.88
13 Silver	9,080	10.58%	303.5	29.92	0.77	3,452.4	2.63	0.74
21 Raven	2,593	3.02%	253.7	10.22	0.26	2,089.5	1.24	0.35
22 Illini	13,290	15.49%	218.0	60.97	1.58	2,375.1	5.60	1.58
<b>Daytime Community Fixed Route</b>	<b>240,142</b>		<b>10,149.1</b>	<b>23.7</b>		<b>140,060.3</b>	<b>1.7</b>	
1 Yellow	39,396	16.41%	987.0	39.91	1.69	12,436.2	3.17	1.85
2 Red	24,862	10.35%	1,047.3	23.74	1.00	13,385.4	1.86	1.08
3 Lavender	12,199	5.08%	503.4	24.23	1.02	6,774.6	1.80	1.05
4 Blue	8,440	3.51%	571.2	14.78	0.62	7,644.0	1.10	0.64
5 Green	34,536	14.38%	1,383.9	24.96	1.05	19,529.0	1.77	1.03
5 GREENhopper	23,733	9.88%	717.8	33.06	1.40	9,244.2	2.57	1.50
6 Orange	14,317	5.96%	667.8	21.44	0.91	8,217.3	1.74	1.02
6 ORANGEhopper	7,661	3.19%	122.9	62.36	2.64	1,453.2	5.27	3.07
7 Grey	23,102	9.62%	908.5	25.43	1.07	12,604.2	1.83	1.07
8 Bronze	3,604	1.50%	302.0	11.93	0.50	2,125.2	1.70	0.99
9 Brown	19,500	8.12%	1,032.6	18.88	0.80	14,357.5	1.36	0.79
10 Gold	20,766	8.65%	831.2	24.98	1.06	11,978.4	1.73	1.01
11 Ruby	645	0.27%	112.4	5.74	0.24	2,127.3	0.30	0.18
14 Navy	4,000	1.67%	435.3	9.19	0.39	8,610.0	0.46	0.27
16 Pink	3,381	1.41%	526.1	6.43	0.27	9,573.9	0.35	0.21

\* The Percent of Group Ridership shows how the ridership for the route compares to the group

+ Performance Comparison shows each Route's Passengers Per Revenue Hour or Mile compared to the Route Group's average  
Routes that are continually above 1.5 or below 0.5 may need to be examined as they are not performing within the Group Standards.

# Champaign-Urbana Mass Transit District

July 16, 2018

## Route Performance Report

June 2018

Weekdays

	Passengers	Percent of Group Ridership *	Revenue Hours	Passengers Per Revenue Hour	Revenue Hour Performance Comparison +	Revenue Miles	Passengers Per Revenue Mile	Revenue Mile Performance Comparison +
<b>Evening Campus Fixed Route</b>	<b>9,140</b>		<b>401.3</b>	<b>22.8</b>		<b>4,144.4</b>	<b>2.2</b>	
120 Teal	4,025	44.04%	202.7	19.86	0.87	2,148.3	1.87	0.85
130 Silver	1,827	19.99%	101.4	18.01	0.79	891.5	2.05	0.93
220 Illini	3,288	35.97%	97.2	33.82	1.48	1,104.6	2.98	1.35

<b>Evening Community Fixed Route</b>	<b>32,190</b>		<b>1,570.6</b>	<b>20.5</b>		<b>22,150.8</b>	<b>1.5</b>	
50 Green	8,170	25.38%	349.0	23.41	1.14	4,758.6	1.72	1.18
50 GREENhopper	5,758	17.89%	212.7	27.07	1.32	2,809.8	2.05	1.41
70 Grey	7,061	21.94%	286.9	24.61	1.20	4,097.1	1.72	1.19
100 Yellow	9,512	29.55%	503.0	18.91	0.92	6,367.2	1.49	1.03
110 Ruby	814	2.53%	80.9	10.07	0.49	2,037.0	0.40	0.27
180 Lime	875	2.72%	138.2	6.33	0.31	2,081.1	0.42	0.29

\* The Percent of Group Ridership shows how the ridership for the route compares to the group

+ Performance Comparison shows each Route's Passengers Per Revenue Hour or Mile compared to the Route Group's average  
Routes that are continually above 1.5 or below 0.5 may need to be examined as they are not performing within the Group Standards.

## Route Performance Report

June 2018

Weekends

	Passengers	Percent of Group Ridership *	Revenue Hours	Passengers Per Revenue Hour	Revenue Hour Performance Comparison +	Revenue Miles	Passengers Per Revenue Mile	Revenue Mile Performance Comparison +
<b>Campus Fixed Route</b>	<b>8,520</b>		<b>403.3</b>	<b>21.1</b>		<b>4,411.6</b>	<b>1.9</b>	
120 Teal	4,270	50.12%	234.0	18.17	0.86	2,476.0	1.72	0.89
130 Silver	1,858	21.81%	90.0	20.42	0.97	950.5	1.95	1.01
220 Illini	2,392	28.08%	79.4	29.75	1.41	985.1	2.43	1.26
<b>Community Fixed Route</b>	<b>47,061</b>		<b>2,050.5</b>	<b>23.0</b>		<b>27,775.7</b>	<b>1.7</b>	
20 Red	2,583	5.49%	158.2	16.23	0.71	1,989.5	1.30	0.77
30 Lavender	3,393	7.21%	177.4	19.02	0.83	2,810.5	1.21	0.71
50 Green	10,139	21.54%	314.4	32.15	1.40	3,998.7	2.53	1.50
50 GREENhopper	2,224	4.73%	99.5	22.13	0.96	1,243.0	1.79	1.06
70 Grey	12,007	25.51%	440.5	27.20	1.19	5,912.4	2.03	1.20
100 Yellow	13,905	29.55%	552.7	25.11	1.09	6,817.7	2.04	1.20
110 Ruby	1,351	2.87%	100.8	13.28	0.58	1,870.7	0.72	0.43
180 Lime	1,459	3.10%	207.2	7.01	0.31	3,133.2	0.47	0.27

\* The Percent of Group Ridership shows how the ridership for the route compares to the group

+ Performance Comparison shows each Route's Passengers Per Revenue Hour or Mile compared to the Route Group's average. Routes that are continually above 1.5 or below 0.5 may need to be examined as they are not performing within the Group Standards.

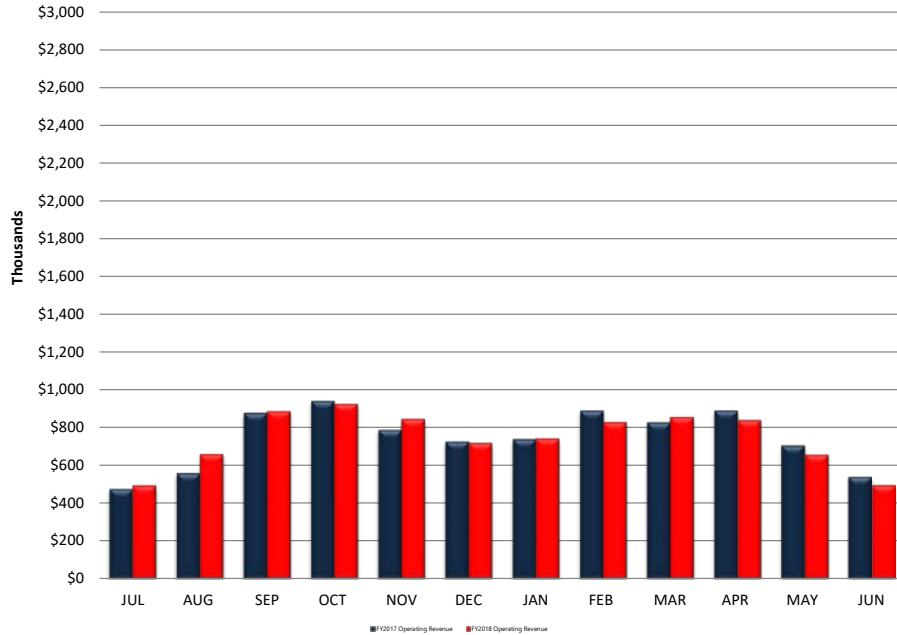
# Champaign-Urbana Mass Transit District

Comparison of FY2018 vs FY2017 Revenue and Expenses

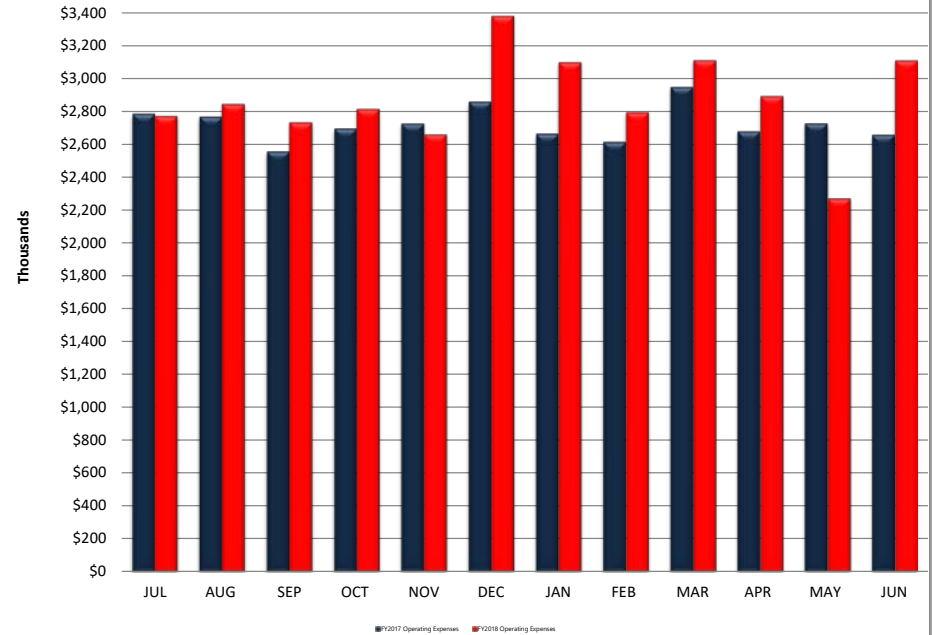
July 18, 2018

	JUL	AUG	SEP	OCT	NOV	DEC	JAN	FEB	MAR	APR	MAY	JUN
<b>FY2017 Operating Revenue</b>	\$474,927	\$558,043	\$876,551	\$938,969	\$787,082	\$725,321	\$737,305	\$889,281	\$825,409	\$888,681	\$703,810	\$539,022
<b>FY2018 Operating Revenue</b>	\$493,748	\$659,475	\$885,352	\$924,676	\$844,802	\$718,583	\$741,955	\$828,737	\$855,026	\$839,891	\$655,141	\$494,560
<b>FY2017 Operating Expenses</b>	\$2,787,063	\$2,768,438	\$2,557,657	\$2,695,448	\$2,726,674	\$2,859,921	\$2,664,716	\$2,615,167	\$2,950,106	\$2,679,398	\$2,727,844	\$2,658,366
<b>FY2018 Operating Expenses</b>	\$2,775,054	\$2,847,097	\$2,736,279	\$2,816,664	\$2,662,961	\$3,383,287	\$3,102,152	\$2,797,727	\$3,114,048	\$2,894,870	\$2,272,841	\$3,113,331
<b>FY2017 Operating Ratio</b>	17.04%	20.16%	34.27%	34.84%	28.87%	25.36%	27.67%	34.00%	27.98%	33.17%	25.80%	20.28%
<b>FY2018 Operating Ratio</b>	17.79%	23.16%	32.36%	32.83%	31.72%	21.24%	23.92%	29.62%	27.46%	29.01%	28.82%	15.89%

**Champaign-Urbana Mass Transit District  
Comparison of FY2017 vs. FY2018  
Operating Revenue**



**Champaign-Urbana Mass Transit District  
Comparison of FY2017 vs. FY2018  
Operating Expenses**



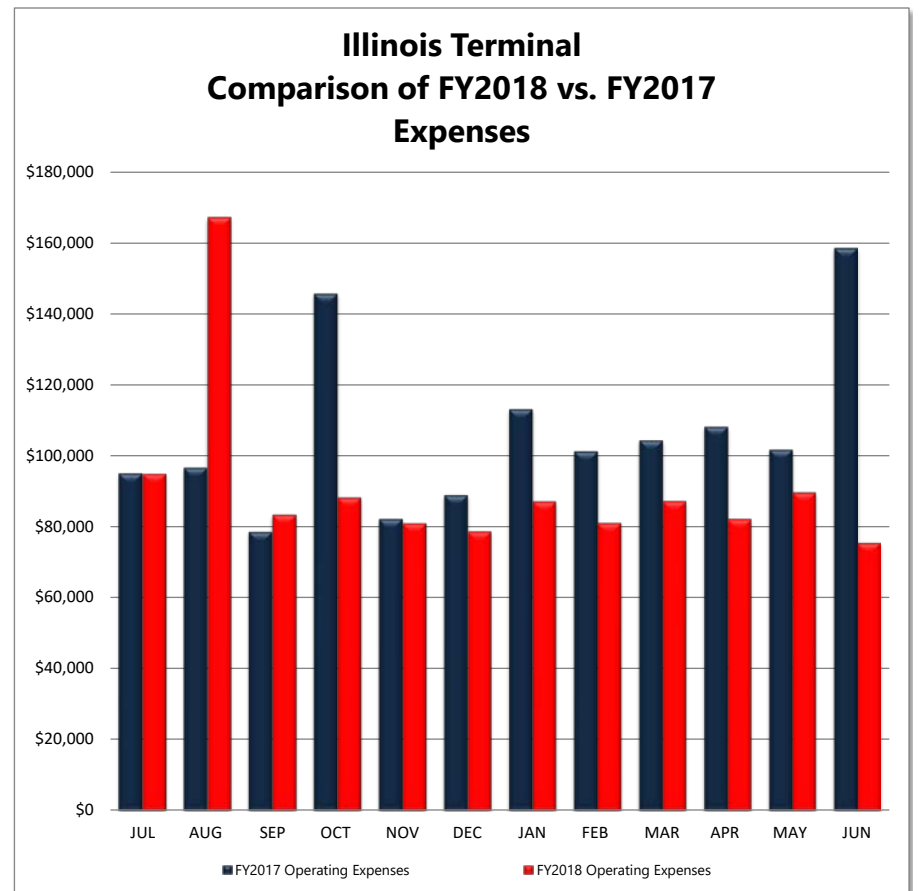
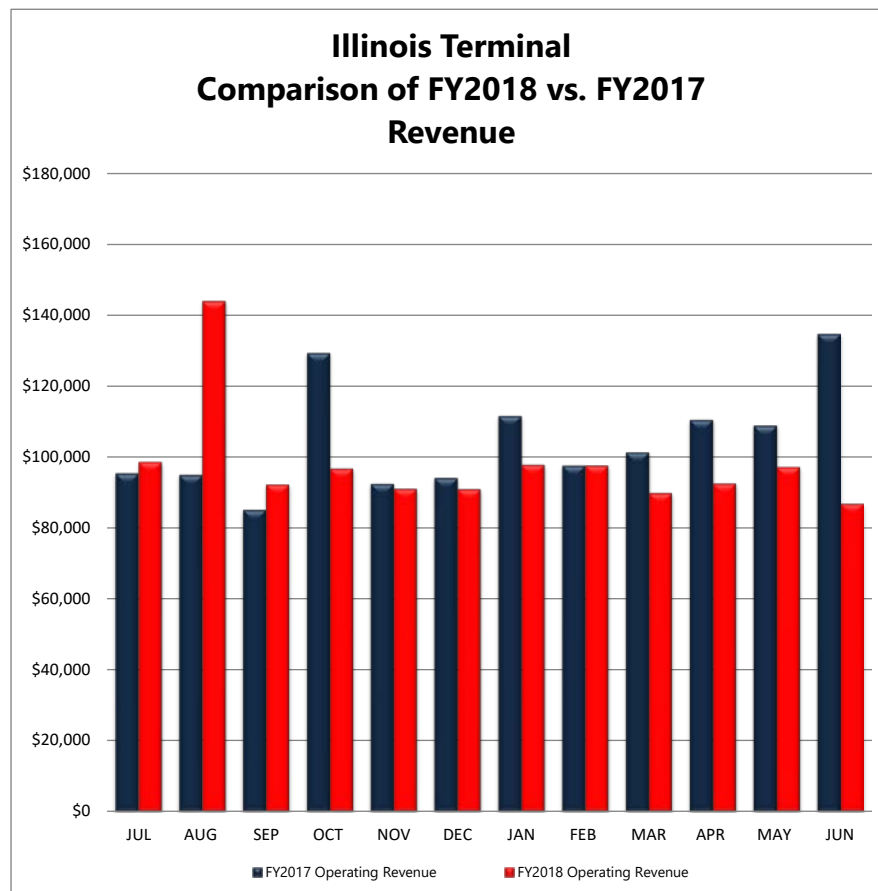
**Champaign-Urbana Mass Transit District**

Illinois Terminal

Comparison of FY2018 vs FY2017 Revenue and Expenses

July 18, 2018

	JUL	AUG	SEP	OCT	NOV	DEC	JAN	FEB	MAR	APR	MAY	JUN	Last 12 Months
<b>FY2017 Operating Revenue</b>	\$95,557	\$95,109	\$85,255	\$129,422	\$92,638	\$94,275	\$111,695	\$97,696	\$101,439	\$110,623	\$108,935	\$134,798	<b>Revenue</b>
<b>FY2018 Operating Revenue</b>	\$98,678	\$144,131	\$92,338	\$96,825	\$91,134	\$90,970	\$97,915	\$97,623	\$89,888	\$92,618	\$97,194	\$86,863	<b>\$1,176,177</b>
<b>FY2017 Operating Expense</b>	\$95,173	\$96,774	\$78,703	\$145,807	\$82,286	\$88,969	\$113,240	\$101,343	\$104,502	\$108,325	\$101,810	\$158,693	<b>Expenses</b>
<b>FY2018 Operating Expense</b>	\$95,062	\$167,281	\$83,524	\$88,337	\$81,114	\$78,855	\$87,254	\$81,207	\$87,387	\$82,312	\$89,792	\$75,562	<b>\$1,097,685</b>
<b>FY2017 Operating Ratio</b>	100.4%	98.3%	108.3%	88.8%	112.6%	106.0%	98.6%	96.4%	97.1%	102.1%	107.0%	84.9%	<b>Ratio</b>
<b>FY2018 Operating Ratio</b>	103.8%	86.2%	110.6%	109.6%	112.4%	115.4%	112.2%	120.2%	102.9%	112.5%	108.2%	115.0%	<b>107.2%</b>



<b>HOURS</b>	Jun 2017	Jun 2018	% Change	FY2017 to Date	FY2018 to Date	% Change
Passenger Revenue	18,287.81	<b>18,332.66</b>	0.2%	268,261.80	<b>268,581.22</b>	0.1%
Vacation/Holiday/Earned Time	8,220.81	<b>8,187.03</b>	-0.4%	73,773.95	<b>81,572.74</b>	10.6%
Non-Revenue	7,217.76	<b>5,768.72</b>	-20.1%	79,681.96	<b>74,185.72</b>	-6.9%
<b>TOTAL</b>	33,726.38	<b>32,288.41</b>	<b>-4.26%</b>	421,717.71	<b>424,339.68</b>	<b>0.62%</b>

<b>REVENUE/EXPENSES</b>	Jun 2017	Jun 2018	% Change	FY2017 to Date	FY2018 to Date	% Change
Operating Revenue	\$539,022.17	<b>\$494,559.74</b>	-8.2%	\$8,944,400.78	<b>\$8,941,946.87</b>	0.0%
Operating Expenses	\$2,658,366.41	<b>\$3,113,331.45</b>	17.1%	\$32,690,797.48	<b>\$34,516,311.55</b>	5.6%
Operating Ratio	20.28%	<b>15.89%</b>	-21.7%	27.36%	<b>25.91%</b>	-5.3%
Passenger Revenue/Revenue Vehicle Hour	\$21.24	<b>\$20.54</b>	-3.3%	\$25.74	<b>\$25.71</b>	-0.1%

<b>RIDERSHIP</b>	Jun 2017	Jun 2018	% Change	FY2017 to Date	FY2018 to Date	% Change
Revenue Passenger	403,920	<b>415,864</b>	3.0%	11,814,515	<b>11,269,089</b>	-4.6%
Transfers	12,248	<b>11,877</b>	-3.0%	168,069	<b>144,363</b>	-14.1%
Total Unlinked	416,168	<b>427,741</b>	2.8%	11,982,584	<b>11,413,452</b>	-4.7%
ADA Riders	6,707	<b>7,079</b>	5.5%	99,519	<b>99,466</b>	-0.1%
Half Fare Cab	1,344	<b>1,173</b>	-12.7%	16,940	<b>15,467</b>	-8.7%
<b>TOTAL</b>	424,219	<b>435,993</b>	2.78%	12,099,043	<b>11,528,385</b>	-4.72%

<b>PASSENGERS/REVENUE HOUR</b>	Jun 2017	Jun 2018	% Change	FY2017 to Date	FY2018 to Date	% Change
Hour	22.76	<b>23.33</b>	2.5%	44.67	<b>42.50</b>	-4.9%



# Champaign Urbana Mass Transit District

## Budget Analysis Report

From Fiscal Year: 2018 Thru Fiscal Year: 2018		From Period 12 Thru Period 12		Division: 00 Champaign Urbana Mass Transit District			As of: 7/17/2018	
Jun-2018	Budget This Period	Jun-2017	Act/Bgt Var %		Actual Ytd	Jul-2017 thru Jun-2018 Budget Ytd	Last Ytd	Act/Bgt Var %
4000000000 **** R E V E N U E ****								
4000000099 ** TRANSPORTATION REVENUE								
4010000000 * PASSENGER FARES								
51,306.83	61,666.63	49,425.38	-16.80%	4010100000 FULL ADULT FARES	614,766.19	740,000.00	704,566.15	-16.92%
2,979.70	1,500.00	3,597.00	98.65%	4010300000 STUDENT FARES	16,842.00	18,000.00	17,155.00	-6.43%
-36.27	0.00	0.00	-100.00%	4010700000 FARE REFUNDS	-73.57	0.00	-141.00	-100.00%
16,179.25	18,333.37	16,011.09	-11.75%	4010800000 ANNUAL PASS REVENUE	178,592.65	220,000.00	185,293.58	-18.82%
5,661.75	7,750.00	6,819.87	-26.95%	4011000000 HALF FARE CAB	77,570.54	93,000.00	80,398.11	-16.59%
3,468.00	4,291.63	2,961.00	-19.19%	4011100000 ADA TICKETS & FARES	44,540.00	51,500.00	41,340.01	-13.51%
79,559.26	93,541.63	78,814.34	-14.95%	4019900099 * TOTAL PASSENGER FARES	932,237.81	1,122,500.00	1,028,611.85	-16.95%
296,980.28	276,400.00	309,565.52	7.45%	4020300000 U OF I CAMPUS SERVICE	5,973,855.01	5,650,000.00	5,876,060.97	5.73%
25,511.67	19,583.37	20,299.66	30.27%	4020500000 ADA - U I & DSC CONTRACTS	248,807.93	235,000.00	235,469.67	5.88%
0.00	0.00	0.00	0.00%	4030100000 SCHOOL SERVICE FARES	560,041.00	540,000.00	533,604.00	3.71%
3,355.30	0.00	3,280.16	100.00%	4060100000 I.T. COMMISSIONS	30,186.08	0.00	36,385.72	100.00%
31,235.37	25,000.00	27,371.75	24.94%	4060300000 ADVERTISING REVENUE	303,209.53	300,000.00	330,517.44	1.07%
436,641.88	414,525.00	439,331.43	5.34%	4069900099 ** TOTAL TRANSPORTATION REVEN	8,048,337.36	7,847,500.00	8,040,649.65	2.56%
4070000000 ** NON - TRANSPORTATION REVENUE								
1,360.90	1,666.63	3,164.13	-18.34%	4070100000 SALE OF MAINTENANCE SERVICES	48,269.80	20,000.00	25,308.08	141.35%
0.00	0.00	0.00	0.00%	4070200000 RENTAL OF REVENUE VEHICLES	0.00	0.00	0.00	0.00%
37,158.72	35,416.63	31,637.77	4.92%	4070300000 BUILDING RENTAL - IL TERMINAL	460,819.67	425,000.00	434,477.10	8.43%
2,699.18	20,833.37	23,157.79	-87.04%	4070300002 BUILDING RENTAL - 801 & 1101	235,093.62	250,000.00	271,282.19	-5.96%
13,395.35	5,833.37	8,972.95	129.63%	4070400000 INVESTMENT INCOME	149,966.26	70,000.00	83,903.80	114.24%
-1,321.39	0.00	-2,718.65	-100.00%	4070400002 +/- FAIR VALUE OF INVESTMENT	-58,708.04	0.00	-29,828.89	-100.00%
-4.00	0.00	-17.00	-100.00%	4070800000 OVER OR SHORT	42.35	0.00	-82.99	100.00%
0.00	0.00	26,140.00	0.00%	4079800000 GAIN ON FIXED ASSET DISPOSAL	9,671.00	0.00	68,497.65	100.00%
4,629.10	0.00	9,353.75	100.00%	4079900001 OTHER NONTRANS. REVENUES	48,454.85	0.00	50,194.19	100.00%
57,917.86	63,750.00	99,690.74	-9.15%	4079900099 ** TOTAL NON - TRANSPORTATION R	893,609.51	765,000.00	903,751.13	16.81%
494,559.74	478,275.00	539,022.17	3.40%	4079999999 *** TOTAL TRANS & NON - TRANS RE	8,941,946.87	8,612,500.00	8,944,400.78	3.83%

# Champaign Urbana Mass Transit District

## Budget Analysis Report

From Fiscal Year: 2018		From Period 12		Division: 00 Champaign Urbana Mass Transit District				As of: 7/17/2018	
Thru Fiscal Year: 2018		Thru Period 12							
Jun-2018	Budget This Period	Jun-2017	Act/Bgt Var %	Jul-2017 thru Jun-2018					
				Actual Ytd	Budget Ytd	Last Ytd	Act/Bgt Var %		
4080000000 ** TAXES LEVIED DIRECTLY									
983,333.34	625,000.00	637,671.25	57.33%	4080100000 PROPERTY TAX REVENUE	8,473,101.39	7,500,000.00	7,656,452.20	12.97%	
-169,224.35	0.00	0.00	-100.00%	4080100001 PROPERTY TAX - UNCOLLECTIBLE R	-169,224.35	0.00	0.00	-100.00%	
32,218.76	26,910.00	36,296.12	19.73%	4080600000 REPLACEMENT TAX REVENUE	189,092.51	150,000.00	229,707.49	26.06%	
0.00	0.00	0.00	0.00%	4089900001 MISCELLANEOUS PROPERTY TAXES	16,498.51	0.00	52,017.66	100.00%	
4110000000 ** STATE GRANTS & REIMBURSEMEN									
2,014,755.65	2,273,500.00	1,748,230.32	-11.38%	4110100000 OPERATING ASSISTANCE - STATE	25,149,972.30	27,282,000.00	21,454,351.26	-7.81%	
0.00	0.00	1,621,043.02	0.00%	4111000000 CAPITAL GRANTS - STATE	0.00	0.00	-567,731.68	0.00%	
0.00	0.00	0.00	0.00%	4111000001 CAPITAL GRANTS - STATE - PASS TH	0.00	0.00	0.00	0.00%	
0.00	0.00	0.00	0.00%	4112000000 COUNTY REIMBURSEMENTS	0.00	0.00	0.00	0.00%	
0.00	0.00	151,531.71	0.00%	4119900000 STATE REIMBURSEMENTS	5,444.32	0.00	158,819.26	100.00%	
0.00	0.00	0.00	0.00%	4119900001 STATE REIMB - PASS THRU'S	0.00	0.00	-7,287.55	0.00%	
4130000000 ** FEDERAL GRANTS & REIMBURSEM									
0.00	0.00	0.00	0.00%	4130100000 OPERATING ASSISTANCE - FEDERAL	0.00	0.00	0.00	0.00%	
0.00	0.00	-659,716.75	0.00%	4130500000 CAPITAL GRANTS - FEDERAL	1,014,352.25	0.00	9,750,062.34	100.00%	
0.00	0.00	0.00	0.00%	4130600000 FEDERAL GRANT PASS THROUGH \$'	-36,714.40	0.00	-33,503.52	-100.00%	
0.00	0.00	0.00	0.00%	4139900000 FEDERAL REIMBURSEMENTS	0.00	0.00	0.00	0.00%	
0.00	0.00	0.00	0.00%	4409900000 OTHER SOURCES/SUBSIDIES (PTA \$)	0.00	0.00	0.00	0.00%	
3,355,643.14	3,403,685.00	4,074,077.84	-1.41%	4999900099 **** TOTAL REVENUE ****	43,584,469.40	43,544,500.00	47,637,288.24	0.09%	

# Champaign Urbana Mass Transit District

## Budget Analysis Report

From Fiscal Year: 2018 Thru Fiscal Year: 2018		From Period 12 Thru Period 12		Division: 00 Champaign Urbana Mass Transit District			As of: 7/17/2018	
Jun-2018	Budget This Period	Jun-2017	Act/Bgt Var %		Actual Ytd	Jul-2017 thru Jun-2018 Budget Ytd	Last Ytd	Act/Bgt Var %
5000000000 **** E X P E N S E S ***								
5010000000 ** LABOR								
602,149.37	720,900.00	613,868.46	-16.47%	5010101000 OPERATORS WAGES	8,792,528.60	8,900,000.00	8,564,687.49	-1.21%
90,259.58	104,910.00	94,023.43	-13.96%	5010204000 MECHANICS WAGES - MAINT	1,134,901.07	1,300,000.00	1,093,683.04	-12.70%
61,279.81	56,490.00	50,554.86	8.48%	5010304000 MAINTENANCE WAGES - MAINT	673,496.77	700,000.00	590,329.84	-3.79%
87,972.49	93,416.63	80,521.31	-5.83%	5010401000 SUPERVISORS SALARIES - OPS	1,102,259.11	1,121,000.00	1,005,012.38	-1.67%
15,878.58	32,280.00	13,857.32	-50.81%	5010404000 SUPERVISORS SALARIES - MAINT	178,852.52	400,000.00	192,509.34	-55.29%
52,223.94	66,901.00	55,778.63	-21.94%	5010501000 OVERHEAD SALARIES - OPS	671,902.93	829,000.00	694,306.80	-18.95%
28,702.29	24,210.00	20,500.92	18.56%	5010504000 OVERHEAD SALARIES - MAINT	311,582.73	300,000.00	255,694.18	3.86%
98,126.10	100,000.00	85,437.60	-1.87%	5010516000 OVERHEAD SALARIES - G&A	1,102,061.54	1,200,000.00	945,731.83	-8.16%
4,442.34	11,833.37	7,387.38	-62.46%	5010516200 OVERHEAD SALARIES - IT	92,325.32	142,000.00	93,769.37	-34.98%
19,611.47	25,000.00	20,521.72	-21.55%	5010601000 CLERICAL WAGES - OPS	260,959.71	300,000.00	271,133.49	-13.01%
4,486.87	4,166.63	6,139.99	7.69%	5010604000 CLERICAL WAGES - MAINT	50,636.52	50,000.00	60,996.06	1.27%
11,989.96	25,833.37	20,454.18	-53.59%	5010616000 CLERICAL WAGES - G&A	171,698.08	310,000.00	245,094.14	-44.61%
7,267.23	10,000.00	6,935.17	-27.33%	5010616200 CLERICAL WAGES - IT	87,169.35	120,000.00	81,723.38	-27.36%
11,144.78	11,666.63	11,883.37	-4.47%	5010716200 SECURITY WAGES - IT	119,202.16	140,000.00	126,389.82	-14.86%
-4,696.23	0.00	-2,215.22	-100.00%	5010801000 LABOR CREDIT - OPS	-42,524.95	0.00	-39,514.32	-100.00%
-3,625.96	0.00	-4,124.53	-100.00%	5010804000 LABOR CREDIT - MAINT	-51,205.14	0.00	-44,085.86	-100.00%
-1,160.89	0.00	-366.45	-100.00%	5010806000 LABOR CREDIT - G&A	-15,074.14	0.00	-12,563.63	-100.00%
7,195.60	11,250.00	10,318.88	-36.04%	5010816200 MAINTENANCE WAGES - IT	123,053.56	135,000.00	132,370.31	-8.85%
1,093,247.33	1,298,857.63	1,091,477.02	-15.83%	5019999000 ** TOTAL LABOR	14,763,825.74	15,947,000.00	14,257,267.66	-7.42%
5020000000 ** FRINGE BENEFITS								
64,567.42	78,680.00	72,561.18	-17.94%	5020101000 FICA - OPS	940,188.69	975,000.00	928,876.82	-3.57%
20,342.73	16,947.00	16,399.79	20.04%	5020104000 FICA - MAINT	214,953.74	210,000.00	201,021.77	2.36%
27,176.30	6,666.63	7,047.57	307.65%	5020116000 FICA - G&A	102,961.67	80,000.00	73,705.18	28.70%
1,536.44	3,228.00	2,889.51	-52.40%	5020116200 FICA - IT	34,065.82	40,000.00	33,698.82	-14.84%
166,117.67	157,365.00	178,093.34	5.56%	5020201000 IMRF - OPS	1,725,230.83	1,950,000.00	1,749,467.20	-11.53%
42,853.23	46,400.00	37,743.69	-7.64%	5020204000 IMRF - MAINT	437,961.40	575,000.00	380,906.96	-23.83%
16,125.83	16,666.63	17,858.53	-3.24%	5020216000 IMRF - G&A	156,568.14	200,000.00	150,402.58	-21.72%
5,216.50	5,243.00	7,006.81	-0.51%	5020216200 IMRF - IT	57,031.56	65,000.00	59,193.34	-12.26%
245,717.25	234,000.00	233,008.79	5.01%	5020301000 MEDICAL INSURANCE - OPS	2,744,549.42	2,808,000.00	2,702,901.40	-2.26%
58,538.69	54,833.37	48,674.18	6.76%	5020304000 MEDICAL INSURANCE - MAINT	623,851.52	658,000.00	586,428.57	-5.19%
21,241.89	22,916.63	25,143.54	-7.31%	5020316000 MEDICAL INSURANCE - G&A	270,353.64	275,000.00	257,831.95	-1.69%
11,519.87	12,500.00	13,521.02	-7.84%	5020316200 MEDICAL INSURANCE - IT	159,996.38	150,000.00	151,308.98	6.66%

# Champaign Urbana Mass Transit District

## Budget Analysis Report

From Fiscal Year: 2018		From Period 12		Division: 00 Champaign Urbana Mass Transit District				As of: 7/17/2018	
Thru Fiscal Year: 2018		Thru Period 12							
Jun-2018	Budget This Period	Jun-2017	Act/Bgt Var %		Actual Ytd	Jul-2017 thru Jun-2018 Budget Ytd	Last Ytd	Act/Bgt Var %	
0.00	0.00	0.00	0.00%	5020401000 DENTAL INSURANCE - OPS	0.00	0.00	0.00	0.00%	
0.00	0.00	0.00	0.00%	5020404000 DENTAL INSURANCE - MAINT	0.00	0.00	0.00	0.00%	
0.00	0.00	0.00	0.00%	5020416000 DENTAL INSURANCE - G&A	0.00	0.00	0.00	0.00%	
1,870.90	3,333.37	1,464.49	-43.87%	5020501000 LIFE INSURANCE - OPS	27,354.24	40,000.00	28,275.34	-31.61%	
-978.22	1,250.00	141.00	-178.26%	5020504000 LIFE INSURANCE - MAINT	6,061.28	15,000.00	6,722.05	-59.59%	
3,287.40	416.63	489.58	689.05%	5020516000 LIFE INSURANCE - G&A	7,817.73	5,000.00	4,898.96	56.35%	
27.80	0.00	18.00	100.00%	5020516200 LIFE INSURANCE - IT	1,126.07	0.00	1,009.41	100.00%	
5,325.89	12,500.00	5,298.78	-57.39%	5020701000 UNEMPLOYMENT INSURANCE - OPS	31,981.67	50,000.00	32,444.95	-36.04%	
1,138.18	3,000.00	1,076.99	-62.06%	5020704000 UNEMPLOYMENT INSURANCE - MAIN	6,710.83	12,000.00	6,915.31	-44.08%	
225.43	750.00	498.99	-69.94%	5020716000 UNEMPLOYMENT INSURANCE - G&A	1,992.12	3,000.00	2,344.11	-33.60%	
669.90	750.00	684.80	-10.68%	5020716200 UNEMPLOYMENT INSURANCE - IT	1,924.72	3,000.00	1,894.20	-35.84%	
8,562.70	16,666.63	6,310.10	-48.62%	5020801000 WORKERS COMP INSURANCE - OPS	86,800.45	200,000.00	114,347.52	-56.60%	
131,938.42	18,750.00	9,441.02	603.67%	5020804000 WORKERS COMP INSURANCE - MAIN	360,685.49	225,000.00	182,136.28	60.30%	
800.42	416.63	333.50	92.12%	5020816000 WORKERS COMP INSURANCE - G&A	4,162.63	5,000.00	4,197.93	-16.75%	
-934.87	4,166.63	7,424.15	-122.44%	5020816200 WORKERS COMP INSURANCE - IT	25,218.88	50,000.00	103,025.07	-49.56%	
0.00	0.00	0.00	0.00%	5021001000 HOLIDAYS - OPS	176,117.12	197,100.00	147,547.60	-10.65%	
0.00	0.00	0.00	0.00%	5021004000 HOLIDAYS - MAINT	49,292.24	40,000.00	38,497.84	23.23%	
0.00	0.00	0.00	0.00%	5021016000 HOLIDAYS - G&A	916.80	0.00	0.00	100.00%	
0.00	0.00	0.00	0.00%	5021016200 HOLIDAYS - IT	2,584.64	4,000.00	3,853.52	-35.38%	
95,112.64	56,838.00	97,117.36	67.34%	5021101000 VACATIONS - OPS	572,463.91	574,700.00	527,649.06	-0.39%	
15,645.20	16,121.00	10,346.32	-2.95%	5021104000 VACATIONS - MAINT	169,411.24	163,000.00	121,231.64	3.93%	
0.00	0.00	0.00	0.00%	5021116000 VACATION - G&A	916.80	0.00	356.96	100.00%	
1,071.20	792.00	1,062.40	35.25%	5021116200 VACATIONS - IT	9,367.60	8,000.00	8,013.76	17.10%	
6,748.80	3,191.63	3,394.40	111.45%	5021201000 OTHER PAID ABSENCES - OPS	44,824.03	38,300.00	96,586.19	17.03%	
1,079.28	1,250.00	1,978.80	-13.66%	5021204000 OTHER PAID ABSENCES - MAINT	8,907.44	15,000.00	16,851.78	-40.62%	
0.00	0.00	0.00	0.00%	5021216000 OTHER PAID ABSENCES - G&A	183.36	0.00	0.00	100.00%	
107.12	0.00	252.56	100.00%	5021216200 OTHER PAID ABSENCES - IT	542.08	0.00	360.80	100.00%	
302.93	4,083.37	570.40	-92.58%	5021301000 UNIFORM ALLOWANCES - OPS	30,481.48	49,000.00	25,726.29	-37.79%	
764.41	2,583.37	1,944.20	-70.41%	5021304000 UNIFORM ALLOWANCES - MAINT	10,220.81	31,000.00	11,726.82	-67.03%	
58.08	333.37	636.17	-82.58%	5021316200 UNIFORM ALLOWANCES - IT	1,675.56	4,000.00	2,385.87	-58.11%	
273.00	1,666.63	1,102.68	-83.62%	5021401000 OTHER FRINGE BENEFITS - OPS	9,700.38	20,000.00	14,954.90	-51.50%	
3,427.00	833.37	757.08	311.22%	5021404000 OTHER FRINGE BENEFITS - MAINT	13,290.80	10,000.00	9,603.31	32.91%	
2,838.00	4,166.63	875.41	-31.89%	5021416000 OTHER FRINGE BENEFITS - G&A	34,707.44	50,000.00	20,004.17	-30.59%	
0.00	916.63	46.97	-100.00%	5021416200 OTHER FRINGE BENEFITS - IT	564.37	11,000.00	988.64	-94.87%	
116,265.98	156,417.00	115,706.26	-25.67%	5021501000 EARNED TIME - OPS	1,445,547.88	1,751,600.00	1,475,281.23	-17.47%	
12,750.26	20,090.00	18,631.21	-36.53%	5021504000 EARNED TIME - MAINT	242,314.18	225,000.00	216,763.75	7.70%	
1,619.00	716.00	1,302.88	126.12%	5021516200 EARNED TIME - IT	27,664.07	8,000.00	15,050.47	245.80%	
750.00	98.00	500.00	665.31%	5021604000 TOOL ALLOWANCE - MAINT	10,873.42	9,000.00	10,364.31	20.82%	

# Champaign Urbana Mass Transit District

## Budget Analysis Report

From Fiscal Year: 2018 Thru Fiscal Year: 2018		From Period 12 Thru Period 12		Division: 00 Champaign Urbana Mass Transit District			As of: 7/17/2018	
Jun-2018	Budget This Period	Jun-2017	Act/Bgt Var %		Actual Ytd	Jul-2017 thru Jun-2018 Budget Ytd	Last Ytd	Act/Bgt Var %
3,712.14	3,191.63	4,622.16	16.31%	5021701000 DISABILITY - OPS	46,413.21	38,300.00	62,624.39	21.18%
0.00	583.37	0.00	-100.00%	5021704000 DISABILITY - MAINT	0.00	7,000.00	6,779.34	-100.00%
0.00	0.00	0.00	0.00%	5021716200 DISABILITY - IT	0.00	0.00	243.54	0.00%
0.00	0.00	342.90	0.00%	5021801000 WORKERS COMP - PAYROLL - OPS	640.26	0.00	461.40	100.00%
0.00	0.00	0.00	0.00%	5021804000 WORKERS COMP - PAYROLL - MAINT	2,716.71	0.00	-44.35	100.00%
0.00	0.00	0.00	0.00%	5021816200 WORKERS COMP - PAYROLL - IT	0.00	0.00	0.00	0.00%
0.00	8,333.37	-108,882.00	-100.00%	5022001000 EARLY RETIREMENT PLAN - OPS	163,687.00	100,000.00	38,676.00	63.69%
0.00	3,750.00	0.00	-100.00%	5022004000 EARLY RETIREMENT PLAN - MAINT	94,565.00	45,000.00	-108,188.00	110.14%
0.00	0.00	0.00	0.00%	5022016000 EARLY RETIREMENT PLAN - G&A	9,828.00	0.00	0.00	100.00%
0.00	0.00	57,758.00	0.00%	5022016200 EARLY RETIREMENT PLAN - IT	0.00	0.00	57,758.00	0.00%
1,095,412.81	1,003,401.52	903,195.51	9.17%	5029999900 ** TOTAL FRINGE BENEFITS	11,209,966.75	11,993,000.00	10,586,063.93	-6.53%
5030000000 ** SERVICES								
83,908.17	58,333.37	49,821.38	43.84%	5030316000 PROFESSIONAL SERVICES - G&A	511,720.86	700,000.00	398,525.03	-26.90%
0.00	250.00	0.00	-100.00%	5030316200 PROFESSIONAL SERVICES - IT	2,067.64	3,000.00	662.79	-31.08%
0.00	0.00	0.00	0.00%	5030316300 PROFESSIONAL SERVICES - IT - NON	0.00	0.00	90.00	0.00%
5,000.00	0.00	0.00	100.00%	5030316400 PROFESSIONAL SERVICES - G&A - N	21,273.55	0.00	106,879.86	100.00%
0.00	0.00	0.00	0.00%	5030404000 TEMPORARY HELP - MAINT	0.00	0.00	0.00	0.00%
16,028.70	0.00	0.00	100.00%	5030416000 TEMPORARY HELP - G&A	120,350.68	0.00	0.00	100.00%
5,439.41	0.00	271.63	100.00%	5030501000 CONTRACT MAINTENANCE - OPS	14,223.96	0.00	3,686.04	100.00%
13,040.46	10,000.00	9,901.16	30.40%	5030504000 CONTRACT MAINTENANCE - MAINT	101,691.92	120,000.00	81,410.15	-15.26%
47,820.23	37,500.00	35,263.99	27.52%	5030516000 CONTRACT MAINTENANCE - G&A	478,565.30	450,000.00	434,883.09	6.35%
4,003.48	3,333.37	2,091.91	20.10%	5030516200 CONTRACT MAINTENANCE - IT	31,403.12	40,000.00	38,135.92	-21.49%
0.00	0.00	0.00	0.00%	5030516300 CONTRACT MAINTENANCE - IT - NON	0.00	0.00	569.20	0.00%
0.00	0.00	0.00	0.00%	5030604000 CUSTODIAL SERVICES - MAINT	0.00	0.00	1,800.00	0.00%
3,741.17	4,583.37	4,465.07	-18.38%	5030801000 PRINTING SERVICES - OPS	62,900.61	55,000.00	49,562.88	14.36%
0.00	83.37	0.00	-100.00%	5030804000 PRINTING SERVICES - MAINT	1,070.50	1,000.00	1,165.00	7.05%
589.82	0.00	0.00	100.00%	5030816000 PRINTING SERVICES - G&A	3,544.83	0.00	1,239.61	100.00%
0.00	0.00	0.00	0.00%	5030816200 PRINTING SERVICES - IT	461.15	0.00	0.00	100.00%
0.00	0.00	0.00	0.00%	5030816300 PRINTING SERVICES - IT - NON REIM	0.00	0.00	0.00	0.00%
613.13	2,333.37	1,147.28	-73.72%	5039901000 OTHER SERVICES - OPS	14,796.63	28,000.00	16,910.89	-47.15%
0.00	416.63	0.00	-100.00%	5039904000 OTHER SERVICES - MAINT	394.61	5,000.00	0.00	-92.11%
5,200.79	3,333.37	875.34	56.02%	5039916000 OTHER SERVICES - G&A	55,444.26	40,000.00	19,347.88	38.61%
801.39	583.37	242.99	37.37%	5039916200 OTHER SERVICES - IT	4,187.22	7,000.00	2,880.88	-40.18%
0.00	0.00	456.60	0.00%	5039916300 OTHER SERVICES - IT - NON REIMB	3,464.64	0.00	5,589.17	100.00%
0.00	0.00	0.00	0.00%	5039916400 OTHER SERVICES - G&A - NON REIM	0.00	0.00	0.00	0.00%

## Champaign Urbana Mass Transit District Budget Analysis Report

From Fiscal Year: 2018		From Period 12		Division: 00 Champaign Urbana Mass Transit District				As of: 7/17/2018	
Thru Fiscal Year: 2018		Thru Period 12							

# Champaign Urbana Mass Transit District

## Budget Analysis Report

From Fiscal Year: 2018		From Period 12		Division: 00 Champaign Urbana Mass Transit District			As of: 7/17/2018	
Thru Fiscal Year: 2018		Thru Period 12						
Jun-2018	Budget This Period	Jun-2017	Act/Bgt Var %		Actual Ytd	Jul-2017 thru Jun-2018 Budget Ytd	Last Ytd	Act/Bgt Var %
5039999999 ***** E X P E N S E S *****								
5040000000 ** MATERIALS & SUPPLIES CONSUM								
114,658.90	146,761.00	85,633.17	-21.87%	5040101000 FUEL & LUBRICANTS - OPS	1,472,961.67	3,000,000.00	1,274,259.82	-50.90%
9,913.65	5,382.00	7,250.52	84.20%	5040104000 FUEL & LUBRICANTS - MAINT	106,859.35	110,000.00	94,641.94	-2.86%
11,390.97	11,583.37	11,557.25	-1.66%	5040201000 TIRES & TUBES - OPS - MB DO	143,028.56	139,000.00	143,524.74	2.90%
598.34	916.63	161.68	-34.72%	5040204000 TIRES & TUBES - MAINT - DR DO	11,652.06	11,000.00	5,315.78	5.93%
0.00	0.00	0.00	0.00%	5040206000 TIRES & TUBES - NON REVENUE VEH	0.00	0.00	516.99	0.00%
4,267.17	3,333.37	514.33	28.01%	5040304000 GARAGE EQUIPMENT - REPAIRS - MA	44,706.02	40,000.00	32,795.71	11.77%
23,610.82	7,500.00	8,098.67	214.81%	5040404000 BLDG & GROUND REPAIRS - MAINT -	113,430.00	90,000.00	100,864.56	26.03%
3,165.00	0.00	-515.31	100.00%	5040404001 BLDG & GROUND REPAIRS - MAINT -	37,334.96	0.00	21,434.37	100.00%
4,261.22	10,000.00	5,005.95	-57.39%	5040416200 BLDG & GROUND REPAIRS - IT	115,311.90	120,000.00	152,974.39	-3.91%
935.00	4,166.63	0.00	-77.56%	5040416300 BLDG & GROUND REPAIRS - IT - NON	10,316.50	50,000.00	17,062.67	-79.37%
0.00	0.00	0.00	0.00%	5040416400 BLDG & GROUND REPAIRS - G&A - N	879.00	0.00	0.00	100.00%
0.00	0.00	-2,253.33	0.00%	5040500001 REVENUE VEHICLE REPAIRS - CORE	-15,891.77	0.00	-39,478.35	-100.00%
234,683.94	158,333.37	156,277.51	48.22%	5040504000 REVENUE VEHICLES - REPAIRS	1,653,809.76	1,900,000.00	1,503,206.01	-12.96%
2,808.26	2,083.37	605.20	34.79%	5040604000 NON REVENUE VEHICLES - REPAIRS	16,902.88	25,000.00	18,251.60	-32.39%
5,246.65	4,583.37	5,163.09	14.47%	5040704000 SERVICE SUPPLIES - MAINT	58,836.96	55,000.00	46,957.65	6.98%
2,249.15	2,083.37	1,496.93	7.96%	5040716200 SERVICE SUPPLIES - IT	20,518.82	25,000.00	20,064.09	-17.92%
14.14	3,333.37	2,176.84	-99.58%	5040801000 OFFICE SUPPLIES - OPS	13,978.43	40,000.00	18,499.07	-65.05%
274.85	2,083.37	375.58	-86.81%	5040804000 OFFICE SUPPLIES - MAINT	7,406.01	25,000.00	8,503.75	-70.38%
605.76	1,666.63	472.63	-63.65%	5040816000 OFFICE SUPPLIES - G&A	9,800.70	20,000.00	7,824.86	-51.00%
28.00	500.00	236.84	-94.40%	5040816200 OFFICE SUPPLIES - IT	3,671.01	6,000.00	3,385.14	-38.82%
6,301.08	0.00	119.98	100.00%	5040901000 COMPUTER & SERVER - MISC EXP'S -	16,605.01	0.00	15,225.86	100.00%
5,171.05	0.00	317.50	100.00%	5040904000 COMPUTER & SERVER - MISC EXP'S -	15,248.07	0.00	5,330.92	100.00%
391.75	0.00	6,237.30	100.00%	5040916000 COMPUTER & SERVER - MISC EXP'S -	29,140.48	0.00	42,237.99	100.00%
0.00	0.00	0.00	0.00%	5040916200 COMPUTER & SERVER - MISC EXP'S -	12,718.65	0.00	547.78	100.00%
0.00	0.00	121.94	0.00%	5041001000 SAFETY & TRAINING	2,784.00	0.00	26,831.64	100.00%
0.00	0.00	0.00	0.00%	5041004000 SAFETY & TRAINING - MAINT	7,917.00	0.00	1,139.99	100.00%
1,258.95	6,666.63	395.47	-81.12%	5041104000 PASSENGER SHELTER - REPAIRS	47,620.71	80,000.00	77,608.78	-40.47%
1,555.30	3,333.37	1,051.49	-53.34%	5041201000 SMALL TOOLS & EQUIP - OPS	3,804.12	40,000.00	41,570.84	-90.49%
1,807.87	3,333.37	210.64	-45.76%	5041204000 SMALL TOOLS & EQUIP - MAINT	27,891.12	40,000.00	23,063.55	-30.27%
323.37	1,666.63	300.00	-80.60%	5041216000 SMALL TOOLS & EQUIP - G&A	32,743.90	20,000.00	7,836.16	63.72%
470.39	1,250.00	3,350.00	-62.37%	5041216200 SMALL TOOLS & EQUIP - IT	15,690.57	15,000.00	13,318.80	4.60%
0.00	0.00	0.00	0.00%	5041216300 SMALL TOOLS & EQUIP - IT - NON REI	1,275.49	0.00	2,755.82	100.00%
0.00	0.00	0.00	0.00%	5041216400 SMALL TOOLS & EQUIP - G&A - NON	0.00	0.00	0.00	0.00%
0.00	0.00	0.00	0.00%	5041304000 FAREBOX REPAIRS	0.00	0.00	0.00	0.00%
3,001.22	0.00	1,576.00	100.00%	5041404000 CAD/AVL,CAMERA,RADIO REPAIRS -	58,739.45	0.00	69,878.87	100.00%

## Champaign Urbana Mass Transit District Budget Analysis Report

From Fiscal Year: 2018 Thru Fiscal Year: 2018		From Period 12 Thru Period 12		Division: 00 Champaign Urbana Mass Transit District			As of: 7/17/2018	
Jun-2018	Budget This Period	Jun-2017	Act/Bgt Var %		Actual Ytd	Jul-2017 thru Jun-2018 Budget Ytd	Last Ytd	Act/Bgt Var %
3,646.36	0.00	102.34	100.00%	5041504000 ADA VEHICLE - REPAIRS - MAINT	40,641.97	0.00	24,026.68	100.00%
442,639.16	380,559.85	296,040.21	16.31%	5049999900 ** TOTAL MATERIAL & SUPPLIES	4,138,333.36	5,851,000.00	3,781,978.47	-29.27%
38,634.75	25,833.37	19,184.10	49.55%	5050216000 ** UTILITIES - G&A	345,807.09	310,000.00	308,444.55	11.55%
6,190.50	8,750.00	8,693.57	-29.25%	5050216200 ** UTILITIES - IT	76,943.46	105,000.00	77,730.67	-26.72%
3,093.69	2,916.63	4,526.66	6.07%	5050216300 ** UTILITIES - IT - NON REIMB	37,121.74	35,000.00	38,478.06	6.06%
226.64	0.00	0.00	100.00%	5050216400 ** UTILITIES - G&A - NON REIMB	2,353.88	0.00	0.00	100.00%
48,145.58	37,500.00	32,404.33	28.39%	5059999900 **TOTAL UTILITIES	462,226.17	450,000.00	424,653.28	2.72%
				5060000000 ** CASUALTY & LIABILITY COSTS				
4,282.23	4,166.63	3,720.74	2.77%	5060104000 PHYSICAL DAMAGE PREMIUMS - MAI	49,804.24	50,000.00	47,596.24	-0.39%
0.00	0.00	0.00	0.00%	5060116200 PHYSICAL DAMAGE PREMIUMS - IT	0.00	0.00	0.00	0.00%
19,980.00	-2,083.37	-4,522.64	<-999.99%	5060204000 PHYSICAL DAMAGE RECOVERIES - M	-65,766.15	-25,000.00	-47,780.23	163.06%
34,718.08	41,666.63	31,639.31	-16.68%	5060316000 PL & PD INSURANCE PREMIUMS - G&	416,777.28	500,000.00	381,160.52	-16.64%
0.00	0.00	0.00	0.00%	5060316200 PL & PD INSURANCE PREMIUMS - IT	0.00	0.00	0.00	0.00%
41,131.07	41,666.63	37,028.82	-1.29%	5060416000 UNINSURED PL & PD PAYOUTS - G&A	481,619.20	500,000.00	451,669.46	-3.68%
2,461.46	0.00	2,274.85	100.00%	5060816000 UNINSURED PL & PD PAYOUTS - G&A	29,537.52	0.00	27,298.20	100.00%
102,572.84	85,416.52	70,141.08	20.09%	5069999900 ** TOTAL CASUALTY & LIABILITY	911,972.09	1,025,000.00	859,944.19	-11.03%
				5070000000 ** TAXES				
1,200.00	0.00	7,136.19	100.00%	5070316000 PROPERTY TAXES	28,687.47	0.00	5,376.59	100.00%
312.50	0.00	0.00	100.00%	5070316400 PROPERTY TAXES - NON-REIMB	5,572.56	0.00	0.00	100.00%
0.00	0.00	0.00	0.00%	5070401000 VEHICLE LICENSING FEES - OPS	892.00	0.00	3,710.00	100.00%
0.00	0.00	0.00	0.00%	5070416000 VEHICLE LICENSING FEES - G&A	0.00	0.00	0.00	0.00%
5,249.23	3,750.00	2,594.84	39.98%	5070501000 FUEL TAX	38,164.76	45,000.00	38,674.86	-15.19%



# Champaign Urbana Mass Transit District

## Budget Analysis Report

From Fiscal Year: 2018 Thru Fiscal Year: 2018		From Period 12 Thru Period 12		Division: 00 Champaign Urbana Mass Transit District				As of: 7/17/2018	
Jun-2018	Budget This Period	Jun-2017	Act/Bgt Var %		Actual Ytd	Jul-2017 thru Jun-2018 Budget Ytd	Last Ytd	Act/Bgt Var %	
6,761.73	3,750.00	9,731.03	80.31%	5079999900 ** TOTAL TAXES	73,316.79	45,000.00	47,761.45	62.93%	
5079999999 **** E X P E N S E S ****									
5080100000 ** PURCHASED TRANSPORTATION									
18,220.00	14,583.37	13,639.74	24.94%	5080116000 CABS	162,037.58	175,000.00	160,796.22	-7.41%	
51,257.58	50,000.00	49,146.83	2.52%	5080216000 ADA CONTRACTS	615,090.96	600,000.00	589,761.96	2.52%	
69,477.58	64,583.37	62,786.57	7.58%	5089999900 **TOTAL PURCHASED TRANSPORTA	777,128.54	775,000.00	750,558.18	0.27%	
5090000000 ** MISCELLANEOUS EXPENSES									
4,127.41	6,250.00	8,045.80	-33.96%	5090116000 DUES & SUBSCRIPTIONS - G&A	80,375.39	75,000.00	74,297.52	7.17%	
10,353.16	7,333.37	13,401.16	41.18%	5090216000 TRAVEL & MEETINGS - G&A	86,012.96	88,000.00	69,567.81	-2.26%	
0.00	0.00	0.00	0.00%	5090716000 BAD DEBT EXPENSE	0.00	0.00	0.00	0.00%	
9,615.33	16,666.63	19,456.05	-42.31%	5090816000 ADVERTISING EXPENSES - G&A	177,975.22	200,000.00	184,256.05	-11.01%	
0.00	0.00	0.00	0.00%	5090816200 ADVERTISING EXPENSES - IT	1,540.00	0.00	0.00	100.00%	
0.00	666.63	5,800.00	-100.00%	5090916000 TRUSTEE COMPENSATION	4,750.00	8,000.00	7,850.00	-40.63%	
812.63	666.63	61.50	21.90%	5091016000 POSTAGE	4,938.97	8,000.00	4,841.61	-38.26%	
0.00	0.00	0.00	0.00%	5091516000 LOSS/DISPOSAL FIXED ASSETS	0.00	0.00	0.00	0.00%	
0.00	0.00	0.00	0.00%	5091616000 ADVERTISING SERVICES EXPENSE	0.00	0.00	0.00	0.00%	
-177.30	0.00	1,145.00	-100.00%	5091716000 SUBSTANCE ABUSE PROGRAM	12,192.80	0.00	21,699.72	100.00%	
3,714.80	1,666.63	2,015.31	122.89%	5099901000 OTHER MISC EXPENSES - OPS	19,306.67	20,000.00	12,468.98	-3.47%	
1,792.98	833.37	435.99	115.15%	5099904000 OTHER MISC EXPENSES - MAINT	10,672.59	10,000.00	4,963.03	6.73%	
8,681.01	9,083.37	1,953.47	-4.43%	5099916000 OTHER MISC EXPENSES - G&A	36,741.57	109,000.00	46,752.61	-66.29%	
278.20	1,666.63	2,032.30	-83.31%	5099916200 OTHER MISC EXPENSES - IT	5,101.55	20,000.00	6,650.00	-74.49%	
227.02	416.63	47.42	-45.51%	5099916300 OTHER MISC EXPENSES - IT - NON R	627.02	5,000.00	960.44	-87.46%	
7,601.81	0.00	9,688.46	100.00%	5099916400 OTHER MISC EXPENSES - G&A - NON	12,600.85	0.00	24,967.57	100.00%	
-3,390.41	0.00	0.00	-100.00%	5099926000 UNALLOCATED EXPENSES	-2,816.14	0.00	0.00	-100.00%	
43,636.64	45,249.89	64,082.46	-3.57%	5099999900 ** TOTAL MISCELLANEOUS EXPENSE	450,019.45	543,000.00	459,275.34	-17.12%	
5100000000 ** EXPENSE TRANSFERS									
0.00	0.00	0.00	0.00%	5109999900 ** TOTAL EXPENSE TRANSFERS	0.00	0.00	0.00	0.00%	

# Champaign Urbana Mass Transit District

## Budget Analysis Report

From Fiscal Year: 2018 Thru Fiscal Year: 2018		From Period 12 Thru Period 12		Division: 00 Champaign Urbana Mass Transit District				As of: 7/17/2018	
Jun-2018	Budget This Period	Jun-2017	Act/Bgt Var %		Actual Ytd	Jul-2017 thru Jun-2018 Budget Ytd	Last Ytd	Act/Bgt Var %	
5109999999 **** E X P E N S E S ****									
5110000000 ** INTEREST EXPENSES									
0.00	0.00	0.00	0.00%	5110116000 INTEREST - LONG-TERM DEBTS	0.00	0.00	0.00	0.00%	
11,920.25	0.00	25,066.39	100.00%	5110216000 INTEREST - SHORT-TERM DEBTS	155,639.64	0.00	28,985.42	100.00%	
11,920.25	0.00	25,066.39	100.00%	5119999900 ** TOTAL INTEREST	155,639.64	0.00	28,985.42	100.00%	
5120000000 ** LEASE & RENTALS									
0.00	12,500.00	0.00	-100.00%	5120401000 PASSENGER REVENUE VEHICLES -	0.00	150,000.00	48,083.40	-100.00%	
0.00	1,916.63	978.24	-100.00%	5120516000 SERVICE VEHICLE LEASES	5,869.44	23,000.00	11,738.88	-74.48%	
1,919.65	2,333.37	2,168.21	-17.73%	5120704000 GARAGE EQUIPMENT LEASES - MAIN	25,258.51	28,000.00	26,069.91	-9.79%	
0.00	0.00	0.00	0.00%	5120901000 RADIO EQUIPMENT LEASES - OPS	0.00	0.00	0.00	0.00%	
0.00	0.00	0.00	0.00%	5121216000 G.A. FACILITIES LEASES	0.00	0.00	0.00	0.00%	
11,102.65	0.00	9,988.85	100.00%	5121301000 MISCELLANEOUS LEASES - OPS	126,170.07	0.00	94,589.66	100.00%	
1,516.88	0.00	327.36	100.00%	5121304000 MISCELLANEOUS LEASES - MAINT	9,547.70	0.00	327.36	100.00%	
8,629.37	14,750.00	9,124.60	-41.50%	5121316000 MISCELLANEOUS LEASES - G&A	121,823.09	177,000.00	153,414.98	-31.17%	
2,082.48	0.00	1,383.59	100.00%	5121316200 MISCELLANEOUS LEASES - IT	13,292.37	0.00	20,732.40	100.00%	
0.00	0.00	0.00	0.00%	5121316300 MISCELLANEOUS LEASES - IT - NON	0.00	0.00	2,000.00	0.00%	
0.00	0.00	0.00	0.00%	5121316400 MISCELLANEOUS LEASES - G&A - NO	0.00	0.00	3,000.00	0.00%	
25,251.03	31,500.00	23,970.85	-19.84%	5129999900 ** TOTAL LEASE & RENTALS	301,961.18	378,000.00	359,956.59	-20.12%	
5130000000 ** DEPRECIATION									
44,166.71	0.00	0.00	100.00%	5130201000 PASSENGER SHELTERS DEPR	178,297.82	0.00	0.00	100.00%	
1,076,259.34	0.00	0.00	100.00%	5130401000 REVENUE VEHICLE DEPRECIATION	4,184,445.58	0.00	0.00	100.00%	
11,972.41	0.00	0.00	100.00%	5130516000 SERVICE VEHICLE DEPRECIATION	47,889.67	0.00	0.00	100.00%	
3,102.95	0.00	0.00	100.00%	5130704000 GARAGE EQUIP. DEPRECIATION - MA	12,411.81	0.00	0.00	100.00%	
10,844.60	0.00	0.00	100.00%	5130901000 REVENUE VEHICLE RADIO EQUIP. DE	43,378.43	0.00	0.00	100.00%	
18,707.42	0.00	0.00	100.00%	5131016000 COMPUTER EQUIPMENT DEPRECIATI	78,781.71	0.00	0.00	100.00%	
14,297.69	0.00	0.00	100.00%	5131116000 REVENUE COLLECTION EQUIPMENT	57,190.75	0.00	0.00	100.00%	
311,754.02	0.00	0.00	100.00%	5131216000 G.A. FACILITIES DEPRECIATION	1,684,096.61	0.00	0.00	100.00%	
0.00	0.00	0.00	0.00%	5131316000 G.A. SYSTEM DEV.DEPRECIATION	0.00	0.00	0.00	0.00%	
17,711.22	0.00	0.00	100.00%	5131416000 MISCELLANEOUS EQUIPMENT DEPR	70,844.88	0.00	0.00	100.00%	
698.54	0.00	0.00	100.00%	5131516000 OFFICE EQUIPMENT DEPR.	2,794.27	0.00	0.00	100.00%	

# Champaign Urbana Mass Transit District

## Budget Analysis Report

From Fiscal Year: 2018		From Period 12		Division: 00 Champaign Urbana Mass Transit District				As of: 7/17/2018	
Thru Fiscal Year: 2018		Thru Period 12							
Jun-2018	Budget This Period	Jun-2017	Act/Bgt Var %			Actual Ytd	Jul-2017 thru Jun-2018 Budget Ytd	Last Ytd	Act/Bgt Var %
1,509,514.90	0.00	0.00	100.00%	5139999900	** TOTAL DEPRECIATION	6,360,131.53	0.00	0.00	100.00%
0.00	2,818,500.00	0.00	-100.00%	5170116000	DEBT SERVICE ON EQUIPMENT & FA	0.00	2,818,500.00	0.00	-100.00%
4,634,766.60	5,890,069.00	2,683,432.80	-21.31%	5999990000	**** TOTAL EXPENSES ****	41,032,082.72	41,274,500.00	32,719,782.90	-0.59%
-1,279,123.46	-2,486,384.00	1,390,645.04	-48.55%	5999999800	NET SURPLUS (DEFICIT)	2,552,386.68	2,270,000.00	14,917,505.34	12.44%

**Champaign-Urbana Mass Transit District**  
**Accounts Payable Check Disbursement List**  
**BUSEY BANK OPERATING ACCOUNT**

From Date: 06/01/2018

Thru Date: 06/30/2018

Check #	Check Date	Ref #	Name	Total Paid	C-CARTS Portion	MTD Portion	Voided
141909	07-Jun-18	A1934	ADVANCE AUTO PARTS	\$5.23		\$5.23	
141910	07-Jun-18	A2487	** AFLAC	\$18,639.90		\$18,639.90	
141911	07-Jun-18	A4804	ALPHA CONTROLS & SERVICES LLC	\$2,900.00		\$2,900.00	
141912	07-Jun-18	A5002	AMAZON	\$99.47		\$99.47	
141913	07-Jun-18	A5085	AMERENIP	\$6,561.03		\$6,561.03	
141914	07-Jun-18	A7545	ARROW GLASS COMPANY	\$202.04		\$202.04	
141915	07-Jun-18	A8007	AT & T	\$1,356.34		\$1,356.34	
141916	07-Jun-18	A8011	AT&T MOBILITY-CC	\$104.20		\$104.20	
141917	07-Jun-18	A8130	ATIS ELEVATOR INSPECTIONS, LLC	\$442.50		\$442.50	
141918	07-Jun-18	A8155	ATLAS CAB	\$4,227.00		\$4,227.00	
141919	07-Jun-18	B0427	BARBECK COMMUNICATION	\$902.24	\$252.00	\$650.24	
141920	07-Jun-18	B3555	BIRKEY'S FARM STORE, INC.	\$698.75		\$698.75	
141921	07-Jun-18	B8500	BUMPER TO BUMPER	\$0.00		\$0.00	X
141922	07-Jun-18	C1560	CDC PAPER & JANITOR	\$247.66		\$247.66	
141923	07-Jun-18	C2159	CENTRAL STATES BUS SALES, INC.	\$1,025.26		\$1,025.26	
141924	07-Jun-18	C2165	CENTRAL ILLINOIS TRUCKS	\$0.00		\$0.00	X
141925	07-Jun-18	C2165	CENTRAL ILLINOIS TRUCKS	\$6,912.41		\$6,912.41	
141926	07-Jun-18	C3105	CHEMICAL MAINTENANCE INC.	\$8.00		\$8.00	
141927	07-Jun-18	C3108	CHEMSTATION OF INDIANA	\$1,594.10		\$1,594.10	
141928	07-Jun-18	C4511	CLARKE POWER SERVICES, INC.	\$6,263.09		\$6,263.09	
141929	07-Jun-18	C4585	CLEAN EXHAUST SPECIALIST LLC	\$2,460.00		\$2,460.00	
141930	07-Jun-18	C4592	RON WHITE	\$2,830.45		\$2,830.45	
141931	07-Jun-18	C6263	COMCAST CABLE	\$117.80		\$117.80	
141932	07-Jun-18	C6284	CONSOLIDATED COMMUNICATIONS ENTERPRISE S	\$135.00		\$135.00	
141933	07-Jun-18	C6686	CONSTELLATION NEWENERGY - GAS DIV. LLC	\$3,907.14		\$3,907.14	
141934	07-Jun-18	C8500	CUMMINS CROSSPOINT	\$53.01		\$53.01	
141935	07-Jun-18	C8515	MARK L. CUNNINGHAM	\$40.00		\$40.00	
141936	07-Jun-18	D2848	DETAILER'S TRAINING	\$224.01		\$224.01	
141937	07-Jun-18	D3225	DH PACE COMPANY, INC.	\$936.00		\$936.00	
141938	07-Jun-18	D3590	DISH PASSIONATE CUISINE	\$54.00		\$54.00	
141939	07-Jun-18	D8587	DUST & SON OF CHAMPAIGN COUNTY, INC	\$15.00		\$15.00	
141940	07-Jun-18	F0305	FARM & FLEET	\$222.11		\$222.11	
141941	07-Jun-18	F0365	FASTENAL COMPANY	\$769.39		\$769.39	
141942	07-Jun-18	F0367	FASTENERS ETC., INC.	\$106.05		\$106.05	
141943	07-Jun-18	F6332	DAVID L. FOOTE	\$5,648.01		\$5,648.01	
141944	07-Jun-18	F6367	FORD CITY	\$1,059.69		\$1,059.69	
141945	07-Jun-18	G2320	GETZ FIRE EQUIPMENT CO.	\$144.70		\$144.70	
141946	07-Jun-18	G3484	GILLIG LLC	\$2,072.51		\$2,072.51	
141947	07-Jun-18	G6300	GOODYEAR TIRE & RUBBER CO	\$12,797.32		\$12,797.32	
141948	07-Jun-18	G7341	SUSAN GREER	\$40.00		\$40.00	
141949	07-Jun-18	I4747	ILLINI FS, INC.	\$34,911.42		\$34,911.42	
141950	07-Jun-18	I4761	ILLINI MEDIA	\$860.00		\$860.00	
141951	07-Jun-18	I4790	ILLINOIS-AMERICAN WATER	\$0.00		\$0.00	X
141952	07-Jun-18	I4790	ILLINOIS-AMERICAN WATER	\$3,124.22		\$3,124.22	
141953	07-Jun-18	I4840	ILLINOIS OIL MARKETING	\$1,030.00		\$1,030.00	
141954	07-Jun-18	I4970	ILLINOIS STATE FIRE MARSHAL	\$150.00		\$150.00	
141955	07-Jun-18	I5562	INDIANA STANDARDS LABORATORY	\$230.00		\$230.00	
141956	07-Jun-18	J0320	JANITOR & MAINTENANCE SUPPLIES, INC.	\$429.65		\$429.65	
141957	07-Jun-18	K2000	KECdesign	\$426.00		\$426.00	
141958	07-Jun-18	K2190	KEN'S OIL SERVICE, INC.	\$53,365.20		\$53,365.20	
141959	07-Jun-18	L0580	LB MEDWASTE SERVICES INC	\$181.14		\$181.14	
141960	07-Jun-18	L6446	LOWE'S	\$254.47		\$254.47	
141961	07-Jun-18	L8500	LUMINATOR MASS TRANSIT LLC	\$1,603.28		\$1,603.28	
141962	07-Jun-18	M0368	MARK'S RADIATOR SHOP	\$5,110.00		\$5,110.00	
141963	07-Jun-18	M2179	MENARD'S	\$233.66		\$233.66	
141964	07-Jun-18	M3408	MIDWEST TRANSIT EQUIPMENT, INC.	\$1,743.21		\$1,743.21	
141965	07-Jun-18	M8518	MUNCIE RECLAMATION-SUPPLY	\$177.84		\$177.84	
141966	07-Jun-18	N0320	NAPA AUTO PARTS	\$134.15		\$134.15	
141967	07-Jun-18	N2292	THE AFTERMARKET PARTS COMPANY, LLC.	\$0.00		\$0.00	X
141968	07-Jun-18	N2292	THE AFTERMARKET PARTS COMPANY, LLC.	\$0.00		\$0.00	X
141969	07-Jun-18	N2292	THE AFTERMARKET PARTS COMPANY, LLC.	\$0.00		\$0.00	X
141970	07-Jun-18	N2292	THE AFTERMARKET PARTS COMPANY, LLC.	\$26,005.13		\$26,005.13	
141971	07-Jun-18	P2253	TRACEY PETTIGREW	\$40.00		\$40.00	

**Champaign-Urbana Mass Transit District**  
**Accounts Payable Check Disbursement List**  
**BUSEY BANK OPERATING ACCOUNT**

From Date: 06/01/2018

Thru Date: 06/30/2018

Check #	Check Date	Ref #	Name	Total Paid	C-CARTS Portion	MTD Portion	Voided
141972	07-Jun-18	P4522	SHERRY HELFER	\$428.83		\$428.83	
141973	07-Jun-18	R2015	REPUBLIC SERVICES	\$1,270.50		\$1,270.50	
141974	07-Jun-18	R3488	RILCO OF PEORIA, INC.	\$4,738.34		\$4,738.34	
141975	07-Jun-18	R6120	ROGARDS OFFICE PRODUCTS	\$12.98		\$12.98	
141976	07-Jun-18	S0275	PATCHES A. SAPP	\$120.00		\$120.00	
141977	07-Jun-18	S3006	ADAM C. SHANKS	\$80.00		\$80.00	
141978	07-Jun-18	S8508	SULLIVAN-PARKHILL	\$448.60		\$448.60	
141979	07-Jun-18	S8560	SURFACE 51	\$1,540.00		\$1,540.00	
141980	07-Jun-18	T0007	TJ'S LAUNDRY & DRY CLEANING	\$110.00		\$110.00	
141981	07-Jun-18	T2225	TERMINAL SUPPLY COMPANY	\$824.31		\$824.31	
141982	07-Jun-18	T3063	THERMO KING MIDWEST, INC.	\$71.81		\$71.81	
141983	07-Jun-18	T7590	TRUCK CENTERS, INC.	\$5,744.38		\$5,744.38	
141984	07-Jun-18	U5180	UNITED PARCEL SERVICE	\$115.79		\$115.79	
141985	07-Jun-18	U60295	ULINE	\$3,076.24		\$3,076.24	
141986	07-Jun-18	U7355	U-C SANITARY DISTRICT	\$702.46		\$702.46	
141987	07-Jun-18	U7385	URBANA TRUE TIRES	\$2,315.28		\$2,315.28	
141988	07-Jun-18	V2233	VERIZON WIRELESS	\$1,261.20		\$1,261.20	
141989	07-Jun-18	Z2000	ZEBRA	\$2,500.00		\$2,500.00	
141990	08-Jun-18	A3571	AJ'S STATION 3	\$569.81		\$569.81	
141991	08-Jun-18	B4780	BNA	\$3,685.00		\$3,685.00	
141992	08-Jun-18	B8500	BUMPER TO BUMPER	\$199.89		\$199.89	
141993	08-Jun-18	B8501	BUMPER TO BUMPER	\$238.61		\$238.61	
141994	08-Jun-18	B8588	BUSINESS & LEGAL RESOURCES	\$417.00		\$417.00	
141995	08-Jun-18	C2172	CMS/LGHP	\$385,616.00	\$1,952.00	\$383,664.00	
141996	08-Jun-18	C3059	CHAMPAIGN PARK DISTRICT	\$25.00		\$25.00	
141997	08-Jun-18	C4675	CLIFTONLARSONALLEN LLP	\$23,829.05		\$23,829.05	
141998	08-Jun-18	C6272	COMMERCIAL COLLISION OF CHAMPAIGN, INC	\$2,792.84		\$2,792.84	
141999	08-Jun-18	C6290	CONG CONG	\$385.00		\$385.00	
142000	08-Jun-18	C8450	CU HARDWARE COMPANY	\$55.17		\$55.17	
142001	08-Jun-18	D2850	DEVELOPMENTAL SERVICES	\$39,460.25		\$39,460.25	
142002	08-Jun-18	D3225	DH PACE COMPANY, INC.	\$5,221.00		\$5,221.00	
142003	08-Jun-18	D3590	DISH PASSIONATE CUISINE	\$6,146.05		\$6,146.05	
142004	08-Jun-18	D3630	DIXON GRAPHICS	\$275.00	\$275.00	\$0.00	
142005	08-Jun-18	E3393	BRENDA EILBRACHT	\$40.00		\$40.00	
142006	08-Jun-18	E4733	STEVEN F. ELLIS	\$200.00		\$200.00	
142007	08-Jun-18	E4733	STEVEN F. ELLIS	\$40.00		\$40.00	
142008	08-Jun-18	F4595	FLEET-NET CORPORATION	\$2,235.00		\$2,235.00	
142009	08-Jun-18	G6445	GOVCONNECTION, INC	\$118.90		\$118.90	
142010	08-Jun-18	H2150	LARRY HELM	\$40.00		\$40.00	
142011	08-Jun-18	H6115	MIKE HOFFMANN	\$5,000.00		\$5,000.00	
142012	08-Jun-18	I4828	ILLINOIS HOME PAGE	\$400.00		\$400.00	
142013	08-Jun-18	I5562	INDIANA STANDARDS LABORATORY	\$3.00		\$3.00	
142014	08-Jun-18	I8235	I3 BROADBAND - CU	\$227.99		\$227.99	
142015	08-Jun-18	J6133	ANDREW JOHNSON	\$2,213.46		\$2,213.46	
142016	08-Jun-18	M3375	MID ILLINOIS DEVELOPMENT, LLC	\$8,500.00		\$8,500.00	
142017	08-Jun-18	N2295	THE NEWS GAZETTE	\$615.94		\$615.94	
142018	08-Jun-18	N2296	CORPORATE VIDEO LLC	\$1,000.00		\$1,000.00	
142019	08-Jun-18	O7450	ORKIN EXTERMINATING CO.	\$735.30		\$735.30	
142020	08-Jun-18	P4521	CYNTHIA HOYLE	\$4,940.00		\$4,940.00	
142021	08-Jun-18	P7372	PRESCRIPTION PARTNERS LLC	\$3,564.63		\$3,564.63	
142022	08-Jun-18	R2133	WILLIAM C WILSON	\$1,062.00		\$1,062.00	
142023	08-Jun-18	R6120	ROGARDS OFFICE PRODUCTS	\$1,100.97	\$13.98	\$1,086.99	
142024	08-Jun-18	R8487	BRIAN RULON	\$40.00		\$40.00	
142025	08-Jun-18	S2201	SEON DESIGN (USA) CORP.	\$6,042.50		\$6,042.50	
142026	08-Jun-18	S3115	DANIEL J. HARTMAN	\$801.15		\$801.15	
142027	08-Jun-18	S3187	SHOE CARNIVAL, INC.	\$84.97		\$84.97	
142028	08-Jun-18	S4675	ELIZABETH SKYLES	\$4,849.00		\$4,849.00	
142029	08-Jun-18	T3190	THOMAS, MAMER & HAUGHEY	\$3,079.24		\$3,079.24	
142030	08-Jun-18	U5998	UNIVERSITY OF ILLINOIS	\$11,797.33		\$11,797.33	
142031	08-Jun-18	U7357	CITY OF URBANA	\$0.00		\$0.00	X
142032	08-Jun-18	U7653	US BANK VENDOR SERVICES	\$3,043.99	\$100.41	\$2,943.58	
142033	08-Jun-18	W0003	WCIA-CHANNEL 3	\$1,450.00		\$1,450.00	
142034	11-Jun-18	A5002	AMAZON	\$1,658.49		\$1,658.49	

**Champaign-Urbana Mass Transit District**  
**Accounts Payable Check Disbursement List**  
**BUSEY BANK OPERATING ACCOUNT**

From Date: 06/01/2018

Thru Date: 06/30/2018

Check #	Check Date	Ref #	Name	Total Paid	C-CARTS Portion	MTD Portion	Voided
142035	14-Jun-18	R6000	ROBBINS, SCHWARTZ, NICHOLAS, LIFTON & TA	\$6,500.00		\$6,500.00	
142036	14-Jun-18	A0865	ABSOPURE WATER COMPANY	\$9.00		\$9.00	
142037	14-Jun-18	A4804	ALPHA CONTROLS & SERVICES LLC	\$6,699.54		\$6,699.54	
142038	14-Jun-18	A5085	AMERENIP	\$249.10		\$249.10	
142039	14-Jun-18	B2227	BERG TANKS	\$740.00		\$740.00	
142040	14-Jun-18	B2230	BERNS, CLANCY & ASSOC. PC	\$2,641.07		\$2,641.07	
142041	14-Jun-18	C0233	** CALIFORNIA STATE DISBURSEMENT UNIT	\$24.00		\$24.00	
142042	14-Jun-18	C0410	** CAVALRY PORTFOLIO SERVICES, LLC	\$303.27		\$303.27	
142043	14-Jun-18	C1560	CDC PAPER & JANITOR	\$533.26		\$533.26	
142044	14-Jun-18	C2159	CENTRAL STATES BUS SALES, INC.	\$50.84		\$50.84	
142045	14-Jun-18	C2165	CENTRAL ILLINOIS TRUCKS	\$1,765.80		\$1,765.80	
142046	14-Jun-18	C3045	CITY OF CHAMPAIGN	\$77.50		\$77.50	
142047	14-Jun-18	C3072	VILAIVONE GRIMM	\$80.00		\$80.00	
142048	14-Jun-18	C3105	CHEMICAL MAINTENANCE INC.	\$155.55		\$155.55	
142049	14-Jun-18	C3512	CINTAS FIRST AID & SAFETY	\$62.11		\$62.11	
142050	14-Jun-18	C4511	CLARKE POWER SERVICES, INC.	\$50,873.50		\$50,873.50	
142051	14-Jun-18	C4588	CLEAN THE UNIFORM COMPANY HIGHLAND	\$666.64		\$666.64	
142052	14-Jun-18	C6257	** MARSHA L. COMBS-SKINNER	\$308.31		\$308.31	
142053	14-Jun-18	C6258	COLUMBIA STREET ROASTERY	\$222.25		\$222.25	
142054	14-Jun-18	C6285	THOMAS C. CONRAD	\$40.00		\$40.00	
142055	14-Jun-18	C8450	CU HARDWARE COMPANY	\$147.57		\$147.57	
142056	14-Jun-18	D0271	** DANVILLE MASS TRANSIT	\$2,423.00		\$2,423.00	
142057	14-Jun-18	D2012	DEAN'S GRAPHICS	\$1,228.13		\$1,228.13	
142058	14-Jun-18	D2851	ROBERT L. DEVAULT	\$174.40		\$174.40	
142059	14-Jun-18	D3590	DISH PASSIONATE CUISINE	\$20.00		\$20.00	
142060	14-Jun-18	D8587	DUST & SON OF CHAMPAIGN COUNTY, INC	\$311.63		\$311.63	
142061	14-Jun-18	E3390	EIGHT 22, LLC	\$1,950.00		\$1,950.00	
142062	14-Jun-18	E5110	EMERGENCY VEHICLE LIGHTING, LLC	\$392.93		\$392.93	
142063	14-Jun-18	F6414	RANDAL FOUTS	\$40.00		\$40.00	
142064	14-Jun-18	G4290	GLOBAL EQUIPMENT COMPANY	\$58.62		\$58.62	
142065	14-Jun-18	G4293	GLOBAL TECHNICAL SYSTEMS, INC.	\$913.50		\$913.50	
142066	14-Jun-18	G6290	ANNETTE GOODRICH	\$80.00		\$80.00	
142067	14-Jun-18	G7308	GRAINGER	\$503.00		\$503.00	
142068	14-Jun-18	G73301	GRAYBAR ELECTRIC COMPANY	\$8.78		\$8.78	
142069	14-Jun-18	H3564	HIRERIGHT SOLUTIONS INC.	\$1,472.65		\$1,472.65	
142070	14-Jun-18	I0025	** VANTAGEPOINT TRANSFER AGENTS - 301281	\$26,251.37		\$26,251.37	
142071	14-Jun-18	I4747	ILLINI FS, INC.	\$140.00		\$140.00	
142072	14-Jun-18	I4750	ILLINI FIRE EQUIPMENT CO.	\$243.25		\$243.25	
142073	14-Jun-18	I5758	INIT INC.	\$112.00		\$112.00	
142074	14-Jun-18	I5800	NATIONAL GENERAL INSURANCE	\$733.13		\$733.13	
142075	14-Jun-18	I5801	CORD HACKETT	\$331.58		\$331.58	
142076	14-Jun-18	J0005	J & R USED TIRE SERVICE, INC.	\$203.00		\$203.00	
142077	14-Jun-18	K2166	KEMPER INDUSTRIAL EQUIP.	\$350.00		\$350.00	
142078	14-Jun-18	K2190	KEN'S OIL SERVICE, INC.	\$17,371.78		\$17,371.78	
142079	14-Jun-18	L0440	LAWSON PRODUCTS, INC.	\$1,315.20		\$1,315.20	
142080	14-Jun-18	M0377	MARTIN ONE SOURCE	\$120.00		\$120.00	
142081	14-Jun-18	M1090	MCCORMICK DISTRIBUTION & SERVICE	\$92.00		\$92.00	
142082	14-Jun-18	M1269	MCS OFFICE TECHNOLOGIES	\$67.50		\$67.50	
142083	14-Jun-18	M2114	LISA MEID	\$40.00		\$40.00	
142084	14-Jun-18	M2179	MENARD'S	\$324.34		\$324.34	
142085	14-Jun-18	M3408	MIDWEST TRANSIT EQUIPMENT, INC.	\$54.73		\$54.73	
142086	14-Jun-18	N0387	NATIONAL COATINGS & SUPPLIES	\$128.33		\$128.33	
142087	14-Jun-18	N2292	THE AFTERMARKET PARTS COMPANY, LLC.	\$0.00		\$0.00	
142088	14-Jun-18	N2292	THE AFTERMARKET PARTS COMPANY, LLC.	\$7,813.80		\$7,813.80	
142089	14-Jun-18	N9686	** NYS CHILD SUPPORT PROCESSING CENTER	\$60.00		\$60.00	
142090	14-Jun-18	Q8400	JESSICA AMANDA NICHOLAS	\$247.90		\$247.90	
142091	14-Jun-18	R2133	WILLIAM C WILSON	\$350.00		\$350.00	
142092	14-Jun-18	R3488	RILCO OF PEORIA, INC.	\$7,292.68		\$7,292.68	
142093	14-Jun-18	R6120	ROGARDS OFFICE PRODUCTS	\$195.14		\$195.14	
142094	14-Jun-18	R6482	MICHAEL JOSEPH ROYSE	\$2,250.00		\$2,250.00	
142095	14-Jun-18	S0254	SAM'S CLUB	\$5,798.24		\$5,798.24	
142096	14-Jun-18	S1143	SCHINDLER ELEVATOR CORP.	\$1,667.28		\$1,667.28	
142097	14-Jun-18	S2020	DONAVYN L. SEAY	\$40.00		\$40.00	

X

**Champaign-Urbana Mass Transit District**  
**Accounts Payable Check Disbursement List**  
**BUSEY BANK OPERATING ACCOUNT**

From Date: 06/01/2018

Thru Date: 06/30/2018

Check #	Check Date	Ref #	Name	Total Paid	C-CARTS Portion	MTD Portion	Voided
142098	14-Jun-18	S3006	ADAM C. SHANKS	\$160.00		\$160.00	
142099	14-Jun-18	S3187	SHOE CARNIVAL, INC.	\$214.96		\$214.96	
142100	14-Jun-18	S3487	SILVER MACHINE SHOP	\$240.00		\$240.00	
142101	14-Jun-18	S5192	S.J. SMITH WELDING SUPPLY	\$562.81		\$562.81	
142102	14-Jun-18	S8034	** STARK EXCAVATING, INC	\$19,980.00		\$19,980.00	
142103	14-Jun-18	S8135	ROBERT W. STICKELS	\$40.00		\$40.00	
142104	14-Jun-18	T0007	TJ'S LAUNDRY & DRY CLEANING	\$165.75		\$165.75	
142105	14-Jun-18	T2064	TEE JAY CENTRAL, INC.	\$1,045.95		\$1,045.95	
142106	14-Jun-18	T2205	TEPPER ELECTRIC SUPPLY CO	\$233.50		\$233.50	
142107	14-Jun-18	T3063	THERMO KING MIDWEST, INC.	\$336.00		\$336.00	
142108	14-Jun-18	T7510	TROPHYTIME	\$1,474.10		\$1,474.10	
142109	14-Jun-18	T7590	TRUCK CENTERS, INC.	\$70.86		\$70.86	
142110	14-Jun-18	U7357	CITY OF URBANA	\$5.00		\$5.00	
142111	14-Jun-18	U7359	** URBANA MUNICIPAL EMPL. CREDIT UNION	\$44,846.56		\$44,846.56	
142112	14-Jun-18	U7385	URBANA TRUE TIRES	\$1,903.39		\$1,903.39	
142113	14-Jun-18	W0005	WDWS/WHMS/WUIL RADIO	\$455.00		\$455.00	
142114	14-Jun-18	W0078	CAROL WADE	\$425.00		\$425.00	
142115	14-Jun-18	W0159	** WALINSKI & ASSOCIATES, P.C.	\$35.67		\$35.67	
142116	14-Jun-18	W3455	UIF/WILL	\$470.00		\$470.00	
142117	14-Jun-18	W8564	WURTH USA MIDWEST, INC.	\$322.28		\$322.28	
142118	14-Jun-18	Y2150	YELLOW TRANSPORT, LTD.	\$6,896.50		\$6,896.50	
142119	15-Jun-18	J6136	JOHNSON CONTROLS FIRE PROTECTION LP	\$812.46		\$812.46	
142120	15-Jun-18	K6269	KONE INC.	\$2,990.71		\$2,990.71	
142121	15-Jun-18	U5996	UNIVERSITY OF ILLINOIS	\$60.00		\$60.00	
142122	15-Jun-18	U7357	CITY OF URBANA	\$2,629.19		\$2,629.19	
142123	21-Jun-18	A19330	ADVANCED AUDIO & LIGHTING	\$5,920.00		\$5,920.00	
142124	21-Jun-18	A1934	ADVANCE AUTO PARTS	\$60.14		\$60.14	
142125	21-Jun-18	A3065	AHEAD OF OUR TIME PUBLISHING, INC.	\$500.00		\$500.00	
142126	21-Jun-18	A4804	ALPHA CONTROLS & SERVICES LLC	\$1,565.00		\$1,565.00	
142127	21-Jun-18	A4820	AlphaVu	\$10,000.00		\$10,000.00	
142128	21-Jun-18	A5002	AMAZON	\$1,757.96		\$1,757.96	
142129	21-Jun-18	A5085	AMERENIP	\$4,667.63		\$4,667.63	
142130	21-Jun-18	A5115	AMERICAN PUBLIC TRANSIT	\$35,500.00		\$35,500.00	
142131	21-Jun-18	A7324	PDC/AREA COMPANIES	\$1,356.38		\$1,356.38	
142132	21-Jun-18	A8007	AT & T	\$164.41		\$164.41	
142133	21-Jun-18	B0427	BARBECK COMMUNICATION	\$119.53		\$119.53	
142134	21-Jun-18	B2180	BENEFIT PLANNING CONSULTANTS, INC.	\$819.00		\$819.00	
142135	21-Jun-18	B3555	BIRKEY'S FARM STORE, INC.	\$835.08		\$835.08	
142136	21-Jun-18	B4788	BLOSSOM BASKET FLORIST	\$70.00		\$70.00	
142137	21-Jun-18	B4910	JASON BLUNIER	\$40.00		\$40.00	
142138	21-Jun-18	C03650	CARLE HEALTHCARE INCORPORATED	\$116.98		\$116.98	
142139	21-Jun-18	C0366	CHRISTOPHER CARLSON	\$375.00		\$375.00	
142140	21-Jun-18	C1136	CGG, INC.	\$116.90		\$116.90	
142141	21-Jun-18	C1560	CDC PAPER & JANITOR	\$314.58		\$314.58	
142142	21-Jun-18	C2165	CENTRAL ILLINOIS TRUCKS	\$72,664.70		\$72,664.70	
142143	21-Jun-18	C3100	CHELSEA FINANCIAL GROUP, LTD.	\$12,683.05		\$12,683.05	
142144	21-Jun-18	C3105	CHEMICAL MAINTENANCE INC.	\$704.00		\$704.00	
142145	21-Jun-18	C4588	CLEAN THE UNIFORM COMPANY HIGHLAND	\$522.40		\$522.40	
142146	21-Jun-18	C6263	COMCAST CABLE	\$368.42		\$368.42	
142147	21-Jun-18	C6271	COMP MC	\$17.50		\$17.50	
142148	21-Jun-18	C6284	CONSOLIDATED COMMUNICATIONS ENTERPRISE S	\$7,097.95		\$7,097.95	
142149	21-Jun-18	C8500	CUMMINS CROSSPOINT	\$1,650.97		\$1,650.97	
142150	21-Jun-18	D0423	DAVE & HARRY LOCKSMITHS	\$60.00		\$60.00	
142151	21-Jun-18	D6450	MICHAEL G DOWNEN	\$375.00		\$375.00	
142152	21-Jun-18	D8520	DUNCAN SUPPLY CO. INC.	\$123.36		\$123.36	
142153	21-Jun-18	D8587	DUST & SON OF CHAMPAIGN COUNTY, INC	\$395.60		\$395.60	
142154	21-Jun-18	F0365	FASTENAL COMPANY	\$623.53		\$623.53	
142155	21-Jun-18	F2055	FEDERAL EXPRESS CORP.	\$46.87		\$46.87	
142156	21-Jun-18	F6367	FORD CITY	\$68.13		\$68.13	
142157	21-Jun-18	G2275	GENERAL TRUCK PARTS	\$750.00		\$750.00	
142158	21-Jun-18	G2320	GETZ FIRE EQUIPMENT CO.	\$413.50		\$413.50	
142159	21-Jun-18	G3484	GILLIG LLC	\$991.37		\$991.37	
142160	21-Jun-18	G4293	GLOBAL TECHNICAL SYSTEMS, INC.	\$2,503.72		\$2,503.72	

**Champaign-Urbana Mass Transit District**  
**Accounts Payable Check Disbursement List**  
**BUSEY BANK OPERATING ACCOUNT**

From Date: 06/01/2018

Thru Date: 06/30/2018

Check #	Check Date	Ref #	Name	Total Paid	C-CARTS Portion	MTD Portion	Voided
142161	21-Jun-18	G6445	GOVCONNECTION, INC	\$273.29		\$273.29	
142162	21-Jun-18	H3360	HIBU INC.	\$17.61		\$17.61	
142163	21-Jun-18	I0025	** VANTAGEPOINT TRANSFER AGENTS - 301281	\$902.43		\$902.43	
142164	21-Jun-18	I4790	ILLINOIS-AMERICAN WATER	\$564.44		\$564.44	
142165	21-Jun-18	I4879	IL PUBLIC TRANSIT RISK MANAGEMENT ASOC	\$1,019,234.35		\$1,019,234.35	
142166	21-Jun-18	J0320	JANITOR & MAINTENANCE SUPPLIES, INC.	\$107.85		\$107.85	
142167	21-Jun-18	K2190	KEN'S OIL SERVICE, INC.	\$33,822.29		\$33,822.29	
142168	21-Jun-18	K3461	JAN M. KIJOWSKI	\$40.00		\$40.00	
142169	21-Jun-18	K8564	KURLAND STEEL COMPANY	\$66.95		\$66.95	
142170	21-Jun-18	L3504	THE LINCOLN NATIONAL LIFE INSURANCE CO.	\$1,128.66	\$3.36	\$1,125.30	
142171	21-Jun-18	L9642	LYNN A. UMBARGER	\$1,405.00		\$1,405.00	
142172	21-Jun-18	M0368	MARK'S RADIATOR SHOP	\$2,555.00		\$2,555.00	
142173	21-Jun-18	M2179	MENARD'S	\$253.97		\$253.97	
142174	21-Jun-18	M3015	MH EQUIPMENT COMPANY	\$1,449.78		\$1,449.78	
142175	21-Jun-18	M3375	MID ILLINOIS DEVELOPMENT, LLC	\$8,500.00		\$8,500.00	
142176	21-Jun-18	M3408	MIDWEST TRANSIT EQUIPMENT, INC.	\$53.82		\$53.82	
142177	21-Jun-18	M6162	MOHAWK MFG. & SUPPLY CO.	\$4,411.22		\$4,411.22	
142178	21-Jun-18	N0320	NAPA AUTO PARTS	\$17.41		\$17.41	
142179	21-Jun-18	N2292	THE AFTERMARKET PARTS COMPANY, LLC.	\$2,351.42		\$2,351.42	
142180	21-Jun-18	O5750	ONTARIO INVESTMENTS, INC.	\$1,720.70		\$1,720.70	
142181	21-Jun-18	P0990	PCM SALES, INC.	\$615.39		\$615.39	
142182	21-Jun-18	P2256	PETTY CASH (CHANGE FUND)	\$98.00		\$98.00	
142183	21-Jun-18	P2259	PETTY CASH (IL TERMINAL)	\$269.02		\$269.02	
142184	21-Jun-18	P6436	POWDER COATING & CUSTOM CHROME	\$1,300.00		\$1,300.00	
142185	21-Jun-18	P7367	PREMIER PRINT GROUP	\$1,444.00		\$1,444.00	
142186	21-Jun-18	Q8455	QUILL	\$34.06		\$34.06	
142187	21-Jun-18	R0272	JOSEPH S. RANK	\$40.00		\$40.00	
142188	21-Jun-18	R2133	U OF I COLLEGE OF ENGINEERING	\$300.00		\$300.00	
142188	21-Jun-18	R2133	U OF I COLLEGE OF ENGINEERING	(\$300.00)		(\$300.00)	X
142189	21-Jun-18	R6482	MICHAEL JOSEPH ROYSE	\$2,250.00		\$2,250.00	
142190	21-Jun-18	S0060	SAFEWORKS ILLINOIS	\$1,139.50		\$1,139.50	
142191	21-Jun-18	S0078	SAFETY-KLEEN CORP.	\$976.24		\$976.24	
142192	21-Jun-18	S3115	DANIEL J. HARTMAN	\$2,162.72		\$2,162.72	
142193	21-Jun-18	S3187	SHOE CARNIVAL, INC.	\$228.69		\$228.69	
142194	21-Jun-18	S5191	STUART SMITH	\$80.00		\$80.00	
142195	21-Jun-18	S8506	JANE M. SULLIVAN	\$24.58		\$24.58	
142196	21-Jun-18	T0474	TAYLOR & BLACKBURN	\$691.53		\$691.53	
142197	21-Jun-18	T2225	TERMINAL SUPPLY COMPANY	\$29.00		\$29.00	
142198	21-Jun-18	T7510	TROPHYTIME	\$9.40		\$9.40	
142199	21-Jun-18	T7590	TRUCK CENTERS, INC.	\$1,032.72		\$1,032.72	
142200	21-Jun-18	U5180	UNITED PARCEL SERVICE	\$156.25		\$156.25	
142201	21-Jun-18	U5996	UNIVERSITY OF ILLINOIS	\$433.00		\$433.00	
142202	21-Jun-18	U5998	UNIVERSITY OF ILLINOIS	\$11,797.33		\$11,797.33	
142203	21-Jun-18	U60295	ULINE	\$58.07		\$58.07	
142204	21-Jun-18	U7355	U-C SANITARY DISTRICT	\$2,337.26		\$2,337.26	
142205	21-Jun-18	U7357	CITY OF URBANA	\$149.50		\$149.50	
142206	21-Jun-18	U7385	URBANA TRUE TIRES	\$161.68		\$161.68	
142207	21-Jun-18	W8564	WURTH USA MIDWEST, INC.	\$531.80		\$531.80	
142208	26-Jun-18	S80310	STATE FARM INSURANCE COMPANIES	\$5,270.00		\$5,270.00	
142209	26-Jun-18	U7767	USI INSURANCE SERVICES NATIONAL (CHP)	\$6,423.00	\$105.90	\$6,317.10	
142210	27-Jun-18	W7422	JEFFERY WRIGHT & ATTY MICHAEL WOJTAS	\$130,128.00		\$130,128.00	
142211	28-Jun-18	A0005	A & D ELECTRICAL SUPPLY, INC.	\$77.61		\$77.61	
142212	28-Jun-18	A1934	ADVANCE AUTO PARTS	\$61.01		\$61.01	
142213	28-Jun-18	A4710	ALLDATA CORPORATION	\$1,500.00		\$1,500.00	
142214	28-Jun-18	A4804	ALPHA CONTROLS & SERVICES LLC	\$600.00		\$600.00	
142215	28-Jun-18	A5085	AMERENIP	\$37.76		\$37.76	
142216	28-Jun-18	A5117	AMERICAN BUSINESS FORMS	\$589.82		\$589.82	
142217	28-Jun-18	A7910	ASSURITY LIFE INSURANCE	\$130.00		\$130.00	
142218	28-Jun-18	A8007	AT & T	\$155.61		\$155.61	
142219	28-Jun-18	A8011	AT&T MOBILITY-CC	\$104.20		\$104.20	
142220	28-Jun-18	B3555	BIRKEY'S FARM STORE, INC.	\$758.22		\$758.22	
142221	28-Jun-18	B4510	BLACK & COMPANY	\$274.68		\$274.68	
142222	28-Jun-18	B4788	BLOSSOM BASKET FLORIST	\$60.00		\$60.00	



**Champaign-Urbana Mass Transit District**  
**Accounts Payable Check Disbursement List**  
**BUSEY BANK OPERATING ACCOUNT**

From Date: 06/01/2018

Thru Date: 06/30/2018

Check #	Check Date	Ref #	Name	Total Paid	C-CARTS Portion	MTD Portion	Voided
142223	28-Jun-18	B8501	BUMPER TO BUMPER	\$123.04		\$123.04	
142224	28-Jun-18	C0233	** CALIFORNIA STATE DISBURSEMENT UNIT	\$24.00		\$24.00	
142225	28-Jun-18	C0410	** CAVALRY PORTFOLIO SERVICES, LLC	\$286.27		\$286.27	
142226	28-Jun-18	C1560	CDC PAPER & JANITOR	\$526.77		\$526.77	
142227	28-Jun-18	C2165	CENTRAL ILLINOIS TRUCKS	\$0.00		\$0.00	X
142228	28-Jun-18	C2165	CENTRAL ILLINOIS TRUCKS	\$17,426.95		\$17,426.95	
142229	28-Jun-18	C3105	CHEMICAL MAINTENANCE INC.	\$316.00		\$316.00	
142230	28-Jun-18	C4511	CLARKE POWER SERVICES, INC.	\$2,362.52		\$2,362.52	
142231	28-Jun-18	C4585	CLEAN EXHAUST SPECIALIST LLC	\$6,326.00		\$6,326.00	
142232	28-Jun-18	C4588	CLEAN THE UNIFORM COMPANY HIGHLAND	\$354.32		\$354.32	
142233	28-Jun-18	C6257	** MARSHA L. COMBS-SKINNER	\$308.31		\$308.31	
142234	28-Jun-18	C6258	COLUMBIA STREET ROASTERY	\$125.00		\$125.00	
142235	28-Jun-18	C6408	COUNTRY ARBORS NURSERY, INC.	\$188.80		\$188.80	
142236	28-Jun-18	C8500	CUMMINS CROSSPOINT	\$520.29		\$520.29	
142237	28-Jun-18	D2014	DEAN'S SUPERIOR BLUEPRINT	\$970.00		\$970.00	
142238	28-Jun-18	D2848	DETAILER'S TRAINING	\$209.85		\$209.85	
142239	28-Jun-18	D8587	DUST & SON OF CHAMPAIGN COUNTY, INC	\$836.70		\$836.70	
142240	28-Jun-18	F0367	FASTENERS ETC., INC.	\$47.61		\$47.61	
142241	28-Jun-18	F2013	F.E. MORAN, INC.	\$257.98		\$257.98	
142242	28-Jun-18	F4595	FLEET-NET CORPORATION	\$2,235.00		\$2,235.00	
142243	28-Jun-18	G6300	GOODYEAR TIRE & RUBBER CO	\$165.00		\$165.00	
142244	28-Jun-18	G73301	GRAYBAR ELECTRIC COMPANY	\$17.56		\$17.56	
142245	28-Jun-18	H0325	DENNIS E. HARPER	\$160.00		\$160.00	
142246	28-Jun-18	H2150	LARRY HELM	\$40.00		\$40.00	
142247	28-Jun-18	H8390	HUDSON TECHNOLOGIES, INC.	\$5,037.50		\$5,037.50	
142248	28-Jun-18	I0025	** VANTAGEPOINT TRANSFER AGENTS - 301281	\$25,496.90		\$25,496.90	
142249	28-Jun-18	I4747	ILLINI FS, INC.	\$236.98		\$236.98	
142250	28-Jun-18	I4750	ILLINI FIRE EQUIPMENT CO.	\$223.25		\$223.25	
142251	28-Jun-18	I4805	IBC - CENTRAL IL	\$701.17		\$701.17	
142252	28-Jun-18	I4879	IL PUBLIC TRANSIT RISK MANAGEMENT ASOC	\$256.27		\$256.27	
142253	28-Jun-18	I5766	INNOVA DESIGN & DISTRIBUTING, INC.	\$215.50		\$215.50	
142254	28-Jun-18	I5904	INTERSTATE BATTERIES	\$221.90		\$221.90	
142255	28-Jun-18	J0320	JANITOR & MAINTENANCE SUPPLIES, INC.	\$324.48		\$324.48	
142256	28-Jun-18	J0375	JASPER ENGINES & TRANSMISSIONS	\$3,116.00		\$3,116.00	
142257	28-Jun-18	J6133	ANDREW JOHNSON	\$583.57		\$583.57	
142258	28-Jun-18	K2190	KEN'S OIL SERVICE, INC.	\$16,758.00		\$16,758.00	
142259	28-Jun-18	K3575	KIRK'S AUTOMOTIVE	\$1,900.00		\$1,900.00	
142260	28-Jun-18	L0440	LAWSON PRODUCTS, INC.	\$145.40		\$145.40	
142261	28-Jun-18	L6285	LOOMIS	\$287.91		\$287.91	
142262	28-Jun-18	L8500	LUMINATOR MASS TRANSIT LLC	\$790.22		\$790.22	
142263	28-Jun-18	M0377	MARTIN ONE SOURCE	\$100.00		\$100.00	
142264	28-Jun-18	M1090	MCCORMICK DISTRIBUTION & SERVICE	\$759.40		\$759.40	
142265	28-Jun-18	M1269	MCS OFFICE TECHNOLOGIES	\$1,257.75		\$1,257.75	
142266	28-Jun-18	M2179	MENARD'S	\$157.97		\$157.97	
142267	28-Jun-18	M8518	MUNCIE RECLAMATION-SUPPLY	\$290.85		\$290.85	
142268	28-Jun-18	N0320	NAPA AUTO PARTS	\$123.23		\$123.23	
142269	28-Jun-18	N2292	THE AFTERMARKET PARTS COMPANY, LLC.	\$0.00		\$0.00	X
142270	28-Jun-18	N2292	THE AFTERMARKET PARTS COMPANY, LLC.	\$0.00		\$0.00	X
142271	28-Jun-18	N2292	THE AFTERMARKET PARTS COMPANY, LLC.	\$19,559.32		\$19,559.32	
142272	28-Jun-18	N9686	** NYS CHILD SUPPORT PROCESSING CENTER	\$60.00		\$60.00	
142273	28-Jun-18	P2255	PETTY CASH (GENERAL FUND)	\$704.42		\$704.42	
142274	28-Jun-18	P7585	** PRUDENTIAL INSURANCE CO.	\$13.00		\$13.00	
142275	28-Jun-18	R2133	SHAWN R ODOM-CHAPMAN	\$283.80		\$283.80	
142276	28-Jun-18	R2320	REYNOLDS TOWING SERVICE	\$60.00		\$60.00	
142277	28-Jun-18	R6120	ROGARDS OFFICE PRODUCTS	\$58.02		\$58.02	
142278	28-Jun-18	R6130	ROGERS SUPPLY COMPANY INC	\$43.41		\$43.41	
142279	28-Jun-18	R6375	ROSS & WHITE COMPANY	\$698.29		\$698.29	
142280	28-Jun-18	S0060	SAFEWORKS ILLINOIS	\$2,496.50	\$177.00	\$2,319.50	
142281	28-Jun-18	S3187	SHOE CARNIVAL, INC.	\$259.92		\$259.92	
142282	28-Jun-18	S3500	SIMPLIFIED COMPUTERS	\$28.00		\$28.00	
142283	28-Jun-18	S5981	AMY L. SNYDER	\$140.00		\$140.00	
142284	28-Jun-18	T0007	TJ'S LAUNDRY & DRY CLEANING	\$110.25		\$110.25	
142285	28-Jun-18	T0474	TAYLOR & BLACKBURN	\$1,841.50		\$1,841.50	

**Champaign-Urbana Mass Transit District**  
**Accounts Payable Check Disbursement List**  
**BUSEY BANK OPERATING ACCOUNT**

From Date: 06/01/2018

Thru Date: 06/30/2018

Check #	Check Date	Ref #	Name	Total Paid	C-CARTS Portion	MTD Portion	Voided
142286	28-Jun-18	T2225	TERMINAL SUPPLY COMPANY	\$248.00		\$248.00	
142287	28-Jun-18	T3063	THERMO KING MIDWEST, INC.	\$2,625.00		\$2,625.00	
142288	28-Jun-18	T7510	TROPHYTIME	\$865.80		\$865.80	
142289	28-Jun-18	T7585	TRUGREEN CHEMLAWN	\$538.33		\$538.33	
142290	28-Jun-18	T7590	TRUCK CENTERS, INC.	\$4,979.20		\$4,979.20	
142291	28-Jun-18	U60295	ULINE	\$674.02		\$674.02	
142292	28-Jun-18	U7357	CITY OF URBANA	\$492.00		\$492.00	
142293	28-Jun-18	U7359	** URBANA MUNICIPAL EMPL. CREDIT UNION	\$43,932.96		\$43,932.96	
142294	28-Jun-18	U7385	URBANA TRUE TIRES	\$1,108.43		\$1,108.43	
142295	28-Jun-18	V2233	VERIZON WIRELESS	\$2,506.06		\$2,506.06	
142296	28-Jun-18	W3126	TODD WHITT	\$80.00		\$80.00	
142297	28-Jun-18	Z2333	ZF SERVICES NORTH AMERICA, LLC	\$201.33		\$201.33	
142298	28-Jun-18	A1934	ADVANCE AUTO PARTS	\$24.79		\$24.79	
142299	28-Jun-18	B3555	BIRKEY'S FARM STORE, INC.	\$62.28		\$62.28	
142300	28-Jun-18	C6262	** COMBINED CHARITABLE CAMPAIGN	\$6,104.61		\$6,104.61	
142301	28-Jun-18	C6263	COMCAST CABLE	\$218.81		\$218.81	
142302	28-Jun-18	D8587	DUST & SON OF CHAMPAIGN COUNTY, INC	\$113.89		\$113.89	
142303	28-Jun-18	F2013	F.E. MORAN, INC.	\$210.00		\$210.00	
142304	28-Jun-18	G3484	GILLIG LLC	\$542.80		\$542.80	
142305	28-Jun-18	G6300	GOODYEAR TIRE & RUBBER CO	\$11,225.97		\$11,225.97	
142306	28-Jun-18	I4790	ILLINOIS-AMERICAN WATER	\$1,579.60		\$1,579.60	
142307	28-Jun-18	K0272	MARK KANTNER	\$65.40		\$65.40	
142308	28-Jun-18	M0368	MARK'S RADIATOR SHOP	\$2,555.00		\$2,555.00	
142309	28-Jun-18	N0320	NAPA AUTO PARTS	\$1,396.17		\$1,396.17	
142310	28-Jun-18	N2292	THE AFTERMARKET PARTS COMPANY, LLC.	\$0.00		\$0.00	X
142311	28-Jun-18	N2292	THE AFTERMARKET PARTS COMPANY, LLC.	\$7,701.88		\$7,701.88	
142312	28-Jun-18	R2015	REPUBLIC SERVICES	\$1,251.72		\$1,251.72	
142313	28-Jun-18	R6120	ROGARDS OFFICE PRODUCTS	\$37.95	\$37.95	\$0.00	
142314	28-Jun-18	T0007	TJ'S LAUNDRY & DRY CLEANING	\$55.25		\$55.25	
142315	28-Jun-18	W2155	WELCH SYSTEMS, INC.	\$603.00		\$603.00	
142337	28-Jun-18	C6259	COMMERCE BANK	\$11,161.16		\$11,161.16	
142338	29-Jun-18	Q8400	ILLINOIS OFFICE OF ATHLETIC DEVELOPMENT	\$10,000.00		\$10,000.00	
6011810	01-Jun-18	I5862	INTERNAL REVENUE SERVICE	\$2,425.73	\$2,425.73	\$0.00	
6012018	01-Jun-18	I5862	INTERNAL REVENUE SERVICE	\$165,082.88		\$165,082.88	
6021810	01-Jun-18	I4826	** ILLINOIS DEPT OF REVENUE	\$514.12	\$514.12	\$0.00	
6022018	01-Jun-18	I4826	** ILLINOIS DEPT OF REVENUE	\$28,576.48		\$28,576.48	
6101810	18-Jun-18	I4830	I.M.R.F.	\$3,763.47	\$3,763.47	\$0.00	
6102018	08-Jun-18	I4830	I.M.R.F.	\$223,132.48		\$223,132.48	
6132018	13-Jun-18	S8030	** STATES DISBURSEMENT UNIT	\$2,138.01		\$2,138.01	
61418	14-Jun-18	I4830	I.M.R.F.	\$6,619.98		\$6,619.98	
6151810	15-Jun-18	I5862	INTERNAL REVENUE SERVICE	\$2,169.97	\$2,169.97	\$0.00	
6152018	15-Jun-18	I5862	INTERNAL REVENUE SERVICE	\$145,840.67		\$145,840.67	
6161810	15-Jun-18	I4826	** ILLINOIS DEPT OF REVENUE	\$469.49	\$469.49	\$0.00	
6162018	15-Jun-18	I4826	** ILLINOIS DEPT OF REVENUE	\$26,464.89		\$26,464.89	
6272018	23-Jun-18	S8030	** STATES DISBURSEMENT UNIT	\$1,707.23		\$1,707.23	
62818	28-Jun-18	B8584	^^ BUSEY BANK	\$390,424.87		\$390,424.87	
6291810	29-Jun-18	I5862	INTERNAL REVENUE SERVICE	\$2,581.01	\$2,581.01	\$0.00	
6292018	29-Jun-18	I5862	INTERNAL REVENUE SERVICE	\$150,179.71		\$150,179.71	
6301810	29-Jun-18	I4826	** ILLINOIS DEPT OF REVENUE	\$538.47	\$538.47	\$0.00	
6302018	29-Jun-18	I4826	** ILLINOIS DEPT OF REVENUE	\$27,058.55		\$27,058.55	
				\$3,848,158.49	\$15,379.86	\$3,832,778.63	

^^ Internal Bank Transfer

**Champaign Urbana Mass Transit District**  
**Accounts Payable Check Disbursement List**

Checking Account #: 011-8189-0

FLEX CHECKING-BUSEY BANK

From Date: 6/6/2018

Thru Date: 6/30/2018

Check #	Check Date	Ref #	Name	Amount	Voided
5457	6/6/2018	F4640	FLEX-EMPLOYEE REIMB.	\$75.67	
5458	6/13/2018	F4640	FLEX-EMPLOYEE REIMB.	\$261.48	
5459	6/20/2018	F4640	FLEX-EMPLOYEE REIMB.	\$56.91	
5460	6/27/2018	F4640	FLEX-EMPLOYEE REIMB.	\$76.92	
6302018	6/30/2018	F4640	FLEX-EMPLOYEE REIMB.	\$10,481.40	
Total:				\$10,952.38	



Financial Information	Fiscal Year 2018				
	1st Quarter	2nd Quarter	3rd Quarter	4th Quarter	Fiscal Year to Date
	Actual	Actual	Actual	Actual	Actual
Total Expenses (-)	\$165,333.68	\$166,294.64	\$167,999.29	\$178,018.34	\$677,645.95
Passenger Revenue (+)	\$38,480.70	\$43,332.68	\$41,849.25	\$43,911.19	\$167,573.82
IDOT Reimbursement (+) (DOAP & 5311 Funding)	\$126,852.98	\$122,961.96	\$126,150.04	\$134,107.15	\$510,072.13
Balance	\$0.00	\$0.00	\$0.00	\$0.00	\$0.00

Other Information	Fiscal Year 2018				
	1st Quarter	2nd Quarter	3rd Quarter	4th Quarter	Fiscal Year to Date
CUMTD G&A Hours	362	338	311	404	1,415
CUMTD G&A Cost	\$15,003.63	\$14,678.38	\$14,500.10	\$19,792.85	\$63,974.96
Ridership	5,554	6,259	7,096	7,225	26,134
Revenue Miles	96,367	94,887	102,021	95,927	389,202
Revenue Hours	4,205	4,245	4,387	4,246	17,083

## Account Summary

Basic Securities Account

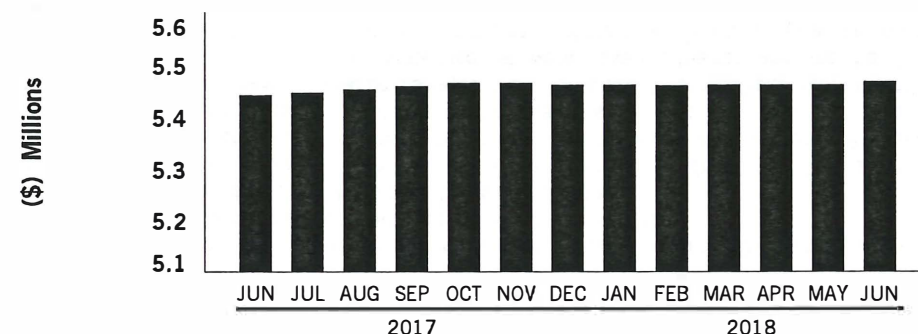
CHAMPAIGN URBANA MASS TRANSIT DIST  
C/O KARL GNADT & BRENDA E EILBRACHT

### CHANGE IN VALUE OF YOUR ACCOUNTS (includes accrued interest)

	This Period (6/1/18-6/30/18)	This Year (1/1/18-6/30/18)
<b>TOTAL BEGINNING VALUE</b>	<b>\$5,461,135.13</b>	<b>\$5,462,200.37</b>
Credits	—	—
Debits	—	—
Security Transfers	—	—
<b>Net Credits/Debits/Transfers</b>	<b>—</b>	<b>—</b>
<b>Change in Value</b>	<b>7,126.22</b>	<b>6,060.98</b>
<b>TOTAL ENDING VALUE</b>	<b>\$5,468,261.35</b>	<b>\$5,468,261.35</b>

### MARKET VALUE OVER TIME

The below chart displays the most recent thirteen months of Market Value.

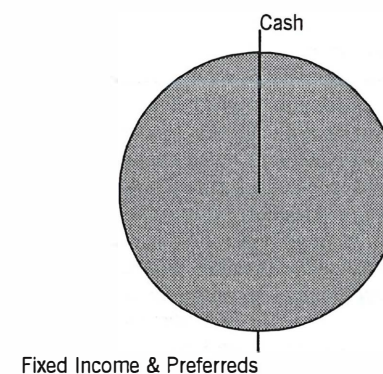


This chart does not reflect corrections to Market Value made subsequent to the dates depicted. It may exclude transactions in Annuities or positions where we are not the custodian, which could delay the reporting of Market Value.

### ASSET ALLOCATION (includes accrued interest)

	Market Value	Percentage
Cash	\$11,640.05	0.21
Fixed Income & Preferreds	5,456,621.30	99.79
<b>TOTAL VALUE</b>	<b>\$5,468,261.35</b>	<b>100.00%</b>

FDIC rules apply and Bank Deposits are eligible for FDIC insurance but are not covered by SIPC. Cash and securities (including MMFs) are eligible for SIPC coverage. See Expanded Disclosures. Values may include assets externally held, which are provided to you as a courtesy, and may not be covered by SIPC. For additional information, refer to the corresponding section of this statement.



This asset allocation represents holdings on a trade date basis, and projected settled Cash/BDP and MMF balances. These classifications do not constitute a recommendation and may differ from the classification of instruments for regulatory or tax purposes.



## Account Summary

Basic Securities Account

CHAMPAIGN URBANA MASS TRANSIT DIST  
C/O KARL GNADT & BRENDA E EILBRACHT

## BALANCE SHEET (^ includes accrued interest)

	Last Period (as of 5/31/18)	This Period (as of 6/30/18)
Cash, BDP, MMFs	\$10,278.09	\$11,640.05
Certificates of Deposit ^	5,450,857.04	5,456,621.30
<b>Total Assets</b>	<b>\$5,461,135.13</b>	<b>\$5,468,261.35</b>
<b>Total Liabilities</b> (outstanding balance)	—	—
<b>TOTAL VALUE</b>	<b>\$5,461,135.13</b>	<b>\$5,468,261.35</b>

## INCOME AND DISTRIBUTION SUMMARY

	This Period (6/1/18-6/30/18)	This Year (1/1/18-6/30/18)
Interest	\$1,361.96	\$40,423.41
<b>Income And Distributions</b>	<b>\$1,361.96</b>	<b>\$40,423.41</b>
<b>Tax-Exempt Income</b>	—	—
<b>TOTAL INCOME AND DISTRIBUTIONS</b>	<b>\$1,361.96</b>	<b>\$40,423.41</b>

Taxable and tax exempt income classifications are based on the characteristics of the underlying securities and not the taxable status of the account.

## ADDITIONAL ACCOUNT INFORMATION

Category	This Period (6/1/18-6/30/18)	This Year (1/1/18-6/30/18)
Accrued Interest Paid	—	\$800.00

## CASH FLOW

	This Period (6/1/18-6/30/18)	This Year (1/1/18-6/30/18)
<b>OPENING CASH, BDP, MMFs</b>	<b>\$10,278.09</b>	<b>\$21,081.18</b>
Purchases	—	(1,099,911.25)
Sales and Redemptions	—	1,050,000.00
Income and Distributions	1,361.96	40,470.12
<b>Total Investment Related Activity</b>	<b>\$1,361.96</b>	<b>\$(9,441.13)</b>
<b>Total Cash Related Activity</b>	—	—
<b>CLOSING CASH, BDP, MMFs</b>	<b>\$11,640.05</b>	<b>\$11,640.05</b>

## GAIN/(LOSS) SUMMARY

	Realized This Period (6/1/18-6/30/18)	Realized This Year (1/1/18-6/30/18)	Unrealized Inception to Date (as of 6/30/18)
Short-Term (Loss)	—	—	\$(28,617.12)
Long-Term (Loss)	—	—	(30,944.03)
<b>TOTAL GAIN/(LOSS)</b>	—	—	<b>\$(59,561.15)</b>

The Gain/(Loss) Summary, which may change due to basis adjustments, is provided for informational purposes and should not be used for tax preparation. Refer to Gain/(Loss) in the Expanded Disclosures.



## Account Detail

Basic Securities Account

CHAMPAIGN URBANA MASS TRANSIT DIST  
C/O KARL GNADT & BRENDA E EILBRACHT

Investment Objectives (in order of priority)†: Income, Aggressive Income, Capital Appreciation

Brokerage Account

† Inform us if your investment objectives, as defined in the Expanded Disclosures, change.

## HOLDINGS

This section reflects positions purchased/sold on a trade date basis. "Market Value" and "Unrealized Gain/(Loss)" may not reflect the value that could be obtained in the market. Fixed Income securities are sorted by maturity or pre-refunding date, and alphabetically within date. Estimated Annual Income a) is calculated on a pre-tax basis, b) does not include any reduction for applicable non-US withholding taxes, c) may include return of principal or capital gains which could overstate such estimates, and d) for securities that have a defined maturity date within the next 12 months, is reflected only through maturity date. Actual income or yield may be lower or higher than the estimates. Current yield reflects the income generated by an investment, and does not reflect changes in its price. Structured Investments, identified on the Position Description Details line as "Asset Class: Struct Inv," may appear in various statement product categories. When displayed, the accrued interest, annual income and current yield for those with a contingent income feature (e.g., Range Accrual Notes or Contingent Income Notes) are estimates and assume specified accrual conditions are met during the relevant period and payment in full of all contingent interest. For Floating Rate Securities, the accrued interest, annual income and current yield are estimates based on the current floating coupon rate and may not reflect historic rates within the accrual period.

## CASH, BANK DEPOSIT PROGRAM AND MONEY MARKET FUNDS

Cash, Bank Deposit Program, and Money Market Funds are generally displayed on a settlement date basis. You have the right to instruct us to liquidate your bank deposit balance(s) or shares of any money market fund balance(s) at any time and have the proceeds of such liquidation remitted to you. Estimated Annual Income, Accrued Interest, and APY% will only be displayed for fully settled positions.

Description	Market Value	7-Day Current Yield %	Est Ann Income	APY %
MORGAN STANLEY BANK N.A. #	\$11,640.05	—	\$17.00	0.150

	Percentage of Holdings	Market Value	Est Ann Income
CASH, BDP, AND MMFs	0.21%	\$11,640.05	\$17.00

# Bank Deposits are held at Morgan Stanley Bank, N.A. and/or Morgan Stanley Private Bank, National Association, affiliates of Morgan Stanley Smith Barney LLC and each a national bank and FDIC member.

## CERTIFICATES OF DEPOSIT

Security Description	Trade Date	Face Value	Orig Unit Cost Adj Unit Cost	Unit Price	Orig Total Cost Adj Total Cost	Market Value	Unrealized Gain/(Loss)	Est Ann Income Accrued Interest	Current Yield %
JPM COLUMBUS OH CD	10/10/16	250,000.00	\$100.000	\$99.675	\$250,000.00			\$1,500.00	0.60
Coupon Rate 1.200%; Matures 10/19/2018; CUSIP 48126XGP4			\$100.000		\$250,000.00	\$249,187.50	\$(812.50) LT	\$593.41	
Interest Paid Quarterly Jan 19; Callable \$100.00 on 07/19/18; Yield to Maturity 2.277%; Issued 10/19/16; Maturity Value = \$250,000.00; Asset Class: FI & Pref									
Merrick Bank SOUTH JORDAN UT CD	10/12/16	250,000.00	100.000	99.671	250,000.00			958.00	0.38
Coupon Rate 1.150%; Matures 10/19/2018; CUSIP 59013JUF4			100.000		250,000.00	249,177.50	(822.50) LT	87.82	
Interest Paid Monthly Nov 19; Yield to Maturity 2.240%; Issued 10/19/16; Maturity Value = \$250,000.00; Asset Class: FI & Pref									
COMENITY BANK JUMBO (FORMERLY WORLD FINL NETWORK BANK) DE CD	10/14/15	200,000.00	100.000	99.813	200,000.00			1,133.00	0.57
Coupon Rate 1.700%; Matures 10/22/2018; CUSIP 20099AYI2			100.000		200,000.00	199,626.43	(373.57) LT	264.32	
Interest Paid Monthly Nov 02; Yield to Maturity 2.302%; Issued 10/21/15; Maturity Value = \$200,000.00; Asset Class: FI & Pref									



## Account Detail

Basic Securities Account

CHAMPAIGN URBANA MASS TRANSIT DIST  
C/O KARL GNADT & BRENDA E EILBRACHT

Security Description	Trade Date	Face Value	Orig Unit Cost Adj Unit Cost	Unit Price	Orig Total Cost Adj Total Cost	Market Value	Unrealized Gain/(Loss)	Est Ann Income Accrued Interest	Current Yield %
<b>First Bank PR SANTURCE PR CD</b>	10/14/15	250,000.000	100.000	99.855	250,000.00			1,292.00	0.52
Coupon Rate 1.550%; Matures 10/22/2018; CUSIP 33767AQP9			100.000		250,000.00	249,637.50	(362.50) LT	96.83	
<i>Interest Paid Monthly Nov 21; Yield to Maturity 2.017%; Issued 10/21/15; Maturity Value = \$250,000.00; Asset Class: FI &amp; Pref</i>									
<b>CUSTOMERS BANK PHOENIXVILLE PA CD</b>	10/10/16	250,000.000	100.000	99.635	250,000.00			1,438.00	0.58
Coupon Rate 1.150%; Matures 10/29/2018; CUSIP 23204HEL8			100.000		250,000.00	249,087.50	(912.50) LT	502.73	
<i>Int. Semi-Annually Apr/Oct 27; Yield to Maturity 2.259%; Issued 10/27/16; Maturity Value = \$250,000.00; Asset Class: FI &amp; Pref</i>									
<b>bmw SALT LAKE CITY UT CD</b>	3/15/16	250,000.000	100.000	99.407	250,000.00			3,250.00	1.31
Coupon Rate 1.300%; Matures 03/18/2019; CUSIP 05580ADW1			100.000		250,000.00	248,517.50	(1,482.50) LT	918.48	
<i>Int. Semi-Annually Mar/Sep 18; Yield to Maturity 2.134%; Issued 03/18/16; Maturity Value = \$250,000.00; Asset Class: FI &amp; Pref</i>									
<b>BANK NEW ENG SALEM NH CD</b>	10/12/16	250,000.000	100.000	98.989	250,000.00			2,063.00	0.83
Coupon Rate 1.100%; Matures 04/18/2019; CUSIP 063847AN7			100.000		250,000.00	247,472.50	(2,527.50) LT	68.70	
<i>Interest Paid Monthly Nov 21; Yield to Maturity 2.376%; Issued 10/21/16; Maturity Value = \$250,000.00; Asset Class: FI &amp; Pref</i>									
<b>WHITNEY BANK GULFPORT MS CD</b>	4/11/17	250,000.000	100.000	99.472	250,000.00			4,125.00	1.66
Coupon Rate 1.650%; Matures 04/22/2019; CUSIP 966594AY9			100.000		250,000.00	248,680.00	(1,320.00) LT	800.20	
<i>Int. Semi-Annually Apr/Oct 20; Yield to Maturity 2.307%; Issued 04/20/17; Maturity Value = \$250,000.00; Asset Class: FI &amp; Pref</i>									
<b>wells fargo cd SIOUX FALLS SD CD</b>	4/15/16	250,000.000	100.000	99.264	250,000.00			2,604.00	1.05
Coupon Rate 1.250%; Matures 04/22/2019; CUSIP 9497484N4			100.000		250,000.00	248,160.00	(1,840.00) LT	86.75	
<i>Interest Paid Monthly May 20; Yield to Maturity 2.166%; Issued 04/20/16; Maturity Value = \$250,000.00; Asset Class: FI &amp; Pref</i>									
<b>CAPITAL ONE NA MCLEAN VA CD</b>	10/14/15	250,000.000	100.000	99.372	250,000.00			4,875.00	1.96
Coupon Rate 1.950%; Matures 10/21/2019; CUSIP 14042RBA8			100.000		250,000.00	248,430.00	(1,570.00) LT	932.38	
<i>Int. Semi-Annually Apr/Oct 21; Yield to Maturity 2.439%; Issued 10/21/15; Maturity Value = \$250,000.00; Asset Class: FI &amp; Pref</i>									
<b>Goldman Sachs NEW YORK NY CD</b>	10/14/15	250,000.000	100.000	99.372	250,000.00			4,875.00	1.96
Coupon Rate 1.950%; Matures 10/21/2019; CUSIP 38148JU58			100.000		250,000.00	248,430.00	(1,570.00) LT	932.38	
<i>Int. Semi-Annually Apr/Oct 21; Yield to Maturity 2.439%; Issued 10/21/15; Maturity Value = \$250,000.00; Asset Class: FI &amp; Pref</i>									
<b>HSBC BANK USA MCLEAN VA CD</b>	4/11/17	250,000.000	100.000	98.937	250,000.00			4,250.00	1.72
Coupon Rate 1.700%; Matures 10/24/2019; CUSIP 40434YHQ3			100.000		250,000.00	247,342.50	(2,657.50) LT	778.01	
<i>Int. Semi-Annually Apr/Oct 24; Callable \$100.00 on 10/24/18; Yield to Maturity 2.525%; Issued 04/24/17; Maturity Value = \$250,000.00; Asset Class: FI &amp; Pref</i>									
<b>SALLIE MAE BK SALT LAKE CITY UT CD</b>	4/11/17	250,000.000	100.175	98.485	250,437.50			4,500.00	1.83
Coupon Rate 1.800%; Matures 03/23/2020; CUSIP 795450ZV0			100.104		250,260.46	246,212.50	(4,047.96) LT	1,222.83	
<i>Int. Semi-Annually Mar/Sep 22; Yield to Maturity 2.701%; Issued 03/22/17; Maturity Value = \$250,000.00; Asset Class: FI &amp; Pref</i>									
<b>discover GREENWOOD DE CD</b>	6/23/17	250,000.000	100.000	97.922	250,000.00			4,375.00	1.79
Coupon Rate 1.750%; Matures 07/06/2020; CUSIP 2546725C8			100.000		250,000.00	244,805.00	(5,195.00) LT	2,114.99	
<i>Int. Semi-Annually Jan/Jul 06; Yield to Maturity 2.817%; Issued 07/06/17; Maturity Value = \$250,000.00; Asset Class: FI &amp; Pref</i>									
<b>AMEX CENTURION SALT LAKE CITY UT CD</b>	4/10/18	250,000.000	99.445	98.393	248,611.25			5,500.00	2.24
Coupon Rate 2.200%; Matures 09/16/2020; CUSIP 02587DB31			99.445		248,611.25	245,982.50	(2,628.75) ST	1,584.24	
<i>Int. Semi-Annually Mar/Sep 16; Yield to Maturity 2.955%; Issued 09/16/15; Maturity Value = \$250,000.00; Asset Class: FI &amp; Pref</i>									



## Account Detail

## Basic Securities Account

CHAMPAIGN URBANA MASS TRANSIT DIST  
C/O KARL GNADT & BRENDA E EILBRACHT

Security Description	Trade Date	Face Value	Orig Unit Cost Adj Unit Cost	Unit Price	Orig Total Cost Adj Total Cost	Market Value	Unrealized Gain/(Loss)	Est Ann Income Accrued Interest	Current Yield %
<b>CAPITAL ONE BANK GLEN ALLEN VA CD</b> Coupon Rate 2.000%; Matures 10/19/2020; CUSIP 1404205P1 <i>Int. Semi-Annually Apr/Oct 18; Yield to Maturity 2.873%; Issued 10/18/17; Maturity Value = \$250,000.00; Asset Class: FI &amp; Pref</i>	10/31/17	250,000.00	100.200 100.156	98.067	250,500.00 250,390.74	<b>245,167.50</b>	(5,223.24) ST	5,000.00 997.27	2.04
<b>CITIBANK, NA CD SIOUX FALLS SD CD</b> Coupon Rate 2.700%; Matures 03/29/2021; CUSIP 17312QH77 <i>Int. Semi-Annually Mar/Sep 29; Yield to Maturity 2.953%; Issued 03/29/18; Maturity Value = \$250,000.00; Asset Class: FI &amp; Pref</i>	4/10/18	250,000.00	100.200 100.186	99.334	250,500.00 250,466.13	<b>248,335.00</b>	(2,131.13) ST	6,750.00 1,705.84	2.72
<b>BANK BARODA NEW YORK BRH CD</b> Coupon Rate 2.150%; Matures 04/19/2021; CUSIP 06062Q3C6 <i>Int. Semi-Annually Apr/Oct 17; Yield to Maturity 2.966%; Issued 04/17/17; Maturity Value = \$250,000.00; Asset Class: FI &amp; Pref</i>	4/11/17	250,000.00	100.000 100.000	97.820	250,000.00 250,000.00	<b>244,550.00</b>	(5,450.00) LT	5,375.00 1,086.75	2.20
<b>ALLY BK SANDY UTAH</b> Coupon Rate 2.850%; Matures 05/03/2021; CUSIP 02007GCJ0 <i>Int. Semi-Annually May/Nov 03; Yield to Maturity 2.971%; Issued 05/03/18; Maturity Value = \$100,000.00; Asset Class: FI &amp; Pref</i>	4/24/18	100,000.00	100.000 100.000	99.670	100,000.00 100,000.00	<b>99,670.00</b>	(330.00) ST	2,850.00 449.18	2.86
<b>BARCLAYS BANK CD WILMINGTON DE CD</b> Coupon Rate 2.050%; Matures 07/26/2021; CUSIP 06740KKQ9 <i>Int. Semi-Annually Jan/Jul 26; Yield to Maturity 3.010%; Issued 07/26/17; Maturity Value = \$250,000.00; Asset Class: FI &amp; Pref</i>	7/18/17	250,000.00	100.000 100.000	97.202	250,000.00 250,000.00	<b>243,005.00</b>	(6,995.00) ST	5,125.00 2,194.41	2.11
<b>third federal CLEVELAND OH CD</b> Coupon Rate 2.050%; Matures 10/27/2021; CUSIP 88413QBT4 <i>Int. Semi-Annually Apr/Oct 27; Yield to Maturity 3.043%; Issued 10/27/17; Maturity Value = \$195,000.00; Asset Class: FI &amp; Pref</i>	10/16/17	195,000.00	100.000 100.000	96.880	195,000.00 195,000.00	<b>188,916.00</b>	(6,084.00) ST	3,997.00 699.02	2.12
<b>MS BANK CD SALT LAKE CITY UT CD</b> Coupon Rate 2.800%; Matures 03/29/2022; CUSIP 61747MR45 <i>Int. Semi-Annually Mar/Sep 29; Yield to Maturity 3.093%; Issued 03/29/18; Maturity Value = \$250,000.00; Asset Class: FI &amp; Pref</i>	3/26/18	250,000.00	100.000 100.000	98.967	250,000.00 250,000.00	<b>247,417.50</b>	(2,582.50) ST	7,000.00 1,769.02	2.83
<b>MEDALLION BK SALT LAKE CITY UT CD</b> Coupon Rate 2.800%; Matures 04/11/2022; CUSIP 58404DBP5 <i>Int. Semi-Annually Apr/Oct 09; Yield to Maturity 3.098%; Issued 04/09/18; Maturity Value = \$250,000.00; Asset Class: FI &amp; Pref</i>	3/29/18	250,000.00	100.000 100.000	98.943	250,000.00 250,000.00	<b>247,357.50</b>	(2,642.50) ST	7,000.00 1,568.31	2.83
	Percentage of Holdings	Face Value			Orig Total Cost Adj Total Cost	Market Value	Unrealized Gain/(Loss)	Est Ann Income Accrued Interest	Current Yield %
<b>CERTIFICATES OF DEPOSIT</b>		<b>5,495,000.000</b>			<b>\$5,495,048.75</b> <b>\$5,494,728.58</b>	<b>\$5,435,167.43</b>	<b>\$(30,944.03) LT</b> <b>\$(28,617.12) ST</b>	<b>\$89,835.00</b> <b>\$21,453.87</b>	<b>1.65%</b>
<b>TOTAL CERTIFICATES OF DEPOSIT</b> (includes accrued interest)	<b>99.79%</b>					<b>\$5,456,621.30</b>			



## Account Detail

Basic Securities Account

CHAMPAIGN URBANA MASS TRANSIT DIST  
C/O KARL GNADT & BRENDA E EILBRACHT

	Percentage of Holdings	Total Cost	Market Value	Unrealized Gain/(Loss)	Est Ann Income Accrued Interest	Current Yield %
TOTAL VALUE		\$5,494,728.58	\$5,446,807.48	\$(30,944.03) LT \$(28,617.12) ST	\$89,852.00 \$21,453.87	1.64%
TOTAL VALUE (includes accrued interest)	100.00%		\$5,468,261.35			

Unrealized Gain/(Loss) totals only reflect positions that have both cost basis and market value information available. Cash, MMF, Deposits and positions stating 'Please Provide' or 'Pending Corporate Actions' are not included.

## ALLOCATION OF ASSETS (^includes accrued interest)

	Cash	Equities	Fixed Income & Preferred Securities	Alternatives	Structured Investments	Other
Cash, BDP, MMFs	\$11,640.05	—	—	—	—	—
Certificates of Deposit ^	—	—	\$5,456,621.30	—	—	—
TOTAL ALLOCATION OF ASSETS ^	\$11,640.05	—	\$5,456,621.30	—	—	—

## ACTIVITY

## CASH FLOW ACTIVITY BY DATE

Activity Date	Settlement Date	Activity Type	Description	Comments	Quantity	Price	Credits/(Debits)
6/4		Interest Income	COMENITY BANK CD 1700 180C22	CUSIP: 20099AYI2			\$288.77
6/19		Interest Income	Merrick Bank 1150 180C19	CUSIP: 59013JUF4			244.18
6/20		Interest Income	wells fargo cd 1250 19AP22	CUSIP: 9497484N4			265.41
6/21		Interest Income	First Bank PR 1550 180C22	CUSIP: 33767AQP9			329.11
6/21		Interest Income	BANK NEW ENG CD 1100 19AP18	CUSIP: 063847AN7			233.56
6/29		Interest Income	MORGAN STANLEY BANK N.A. (Period 06/01-06/30)				0.93

NET CREDITS/(DEBITS)

\$1,361.96

## MONEY MARKET FUND (MMF) AND BANK DEPOSIT PROGRAM ACTIVITY

Activity Date	Activity Type	Description	Credits/(Debits)
6/4	Automatic Investment	BANK DEPOSIT PROGRAM	\$288.77
6/19	Automatic Investment	BANK DEPOSIT PROGRAM	244.18
6/20	Automatic Investment	BANK DEPOSIT PROGRAM	265.41
6/21	Automatic Investment	BANK DEPOSIT PROGRAM	562.67
6/29	Automatic Investment	BANK DEPOSIT PROGRAM	0.93

Account Detail

Basic Securities Account      CHAMPAIGN URBANA MASS TRANSIT DIST  
C/O KARL GNADT & BRENDA E EILBRACHT

MONEY MARKET FUND (MMF) AND BANK DEPOSIT PROGRAM ACTIVITY (CONTINUED)

Activity			Credits/(Debits)
Date	Activity Type	Description	
NET ACTIVITY FOR PERIOD			\$1,361.96

MESSAGES

Senior Investor Helpline

For any inquiries or comments or potential concerns, senior investors or someone acting on their behalf may contact our Firm by calling (800) 280-4534.

# Law Office of Jack Waaler

1104 Scovill Street  
Urbana, IL 61801-6855

Phone: 217/384-2464  
Fax: 217/384-2460

## MEMORANDUM

TO: Board of Directors  
Champaign-Urbana Mass Transit District

FROM: Jack Waaler, Attorney at Law

DATE: July 25, 2018

RE: Review of Minutes of Closed Sessions

The Open Meetings Act requires that the minutes of closed sessions be reviewed semiannually to determine if “the need for confidentiality still exists.” The last review by the Board was January 25, 2018. The attachment lists all closed session minutes that have not been released together with my recommendation.

Most of those minutes recommended to remain confidential out of privacy concerns because they relate to worker’s compensation cases that are less than 20 years old.

The statutes permit the destruction of verbatim recordings of closed sessions if they are not less than 18 months old and the written minutes have been approved. Attached is a list of those closed meetings that meet that test and should be destroyed. (Attachment 3)

I attach a suggested motion for the Board’s action.

All of the unreleased minutes are available for your inspection in Beth’s office.

---

Jack Waaler, Attorney at Law

JW/ml

### **SUGGESTED WRITTEN MOTION**

The Board of Trustees hereby determines as follows:

- A. That the minutes, or portions thereof, of the closed session meetings of the Board listed on "Attachment 1" marked "Release" no longer require confidential treatment and are ordered released.
- B. That the need for confidentiality still exists as to the minutes, or portion thereof, of the closed session meetings of the Board listed on "Attachment 2" marked "Remain Confidential".
- C. That the verbatim recordings of the following listed closed session minutes, "Attachment 3", all of which are not less than 18 months old and the written minutes of which have been approved are authorized to be destroyed.

**ATTACHMENT 1 - RELEASE**

January 25, 2018

## **ATTACHMENT 2 – REMAIN CONFIDENTIAL**

May 1, 1996  
November 3, 2004  
September 28, 2005  
November 29, 2006  
May 30, 2007  
June 25, 2008  
February 29, 2012  
September 26, 2012  
December 5, 2012  
January 30, 2013  
January 29, 2014  
October 29, 2014  
December 10, 2014  
May 31, 2017  
April 25, 2018

**ATTACHMENT 3 – VERBATIM RECORDINGS TO BE DESTROYED**

July 5, 2016

July 27, 2016

August 31, 2016

September 28, 2016

October 26, 2016

December 7, 2016