



CHAMPAIGN-URBANA MASS TRANSIT DISTRICT BOARD MEETING AGENDA

Wednesday, April 26, 2023 – 3:00 p.m.

North Banquet Rm, 4th Floor, Illinois Terminal
45 East University Avenue, Champaign

Board of Trustees:

Dick Barnes
Margaret Chaplan – Vice Chair
Tomas Delgado
Bradley Diel - Chair

Phil Fiscella
Bruce Hannon
Alan Nudo

Advisory Board:

Lowa Mwilambwe/Marty Paulins
Briana Barr

| | <u>Pages</u> |
|--|--------------|
| 1. Call to Order | |
| 2. Roll Call | |
| 3. Approval of Agenda | |
| 4. Audience Participation | |
| 5. Approval of Minutes | |
| A. Board Meeting (Open Session) – March 29, 2023 | 1-4 |
| 6. Communications | |
| 7. Community Resources Presentation by Operations | |
| 8. Reports | |
| A. Managing Director | |
| 1) Operating Notes | 5-8 |
| 2) Ridership Data | 9-10 |
| 3) Route Performance | 11-14 |
| 4) District Operating Revenue/Expenses | 15 |
| 5) Statistical Summary | 16 |
| 6) Budget Analysis | 17-26 |
| 7) Accounts Payable/Check Disbursements | 27-35 |
| 8) C-CARTS Quarterly Report | 36 |
| 9) Bank & Investment Balances | 37 |
| 9. Action Items | |
| A. Bus Wash Improvements Contract | 38-40 |
| B. Administration and Operations Building Server Room Cooling Contract | 41-43 |
| C. Bus Tires Leasing Contract | 44-64 |
| 10. Next Meeting | |
| A. Regular Board of Trustees Meeting – Wednesday, May 31, 2023 – 3:00 p.m. – at Illinois Terminal, 45 East University, Champaign | |



CHAMPAIGN-URBANA MASS TRANSIT DISTRICT BOARD MEETING

AGENDA

Wednesday, April 26, 2023 – 3:00 p.m.

Page 2

11. Closed Session

- To Consider the Appointment, Employment, Compensation, Discipline, Performance, or Dismissal of Specific Employees of the District, and
- To Consider Litigation which is Probable or Imminent against the District followed by Adjournment



Champaign-Urbana Mass Transit District (MTD) Board of Trustees Meeting

MINUTES – SUBJECT TO REVIEW AND APPROVAL

DATE: Wednesday, March 29, 2023
TIME: 3:00 p.m.
PLACE: Illinois Terminal, 45 East University Avenue, Champaign, IL

The video of this meeting can be found at:
<https://www.youtube.com/CUMTD>

Trustees:

| Present | Absent |
|-------------------------------|-------------|
| | Dick Barnes |
| Margaret Chaplan (Vice-Chair) | |
| Tomas Delgado | |
| Bradley Diel (Chair) | |
| Phil Fiscella | |
| Bruce Hannon | |
| | Alan Nudo |

Advisory Board:

| Present | Absent |
|-------------|---------------|
| | Marty Paulins |
| Briana Barr | |

MTD Staff: Karl Gnadt (Managing Director), Amy Snyder (Chief of Staff), Michelle Wright (Finance Director), Jay Rank (Operations Director), Jacinda Crawmer (Human Resources Director), Josh Berbaum (Maintenance & Facilities Director), Brendan Sennett (Safety & Training Director), Josh Dhom (Illinois Terminal Director), Beth Brunk (Clerk)

Others Present:

MINUTES

1. Call to Order
Chair Diel called the meeting to order at 3:00 p.m.
2. Roll Call
Present (5) – Chaplan, Delgado, Diel, Fiscella, Hannon
Absent (2) – Barnes, Nudo

A quorum was declared present.
3. Approval of Agenda

MOTION by Ms. Chaplan to approve the agenda as distributed; seconded by Mr. Fiscella. Upon vote, the MOTION CARRIED.
4. Audience Participation
None
5. Approval of Minutes
A. Board Meeting (Open Session) – February 22, 2023

1
2 MOTION by Mr. Fiscella to approve the open session minutes of the February 22, 2023 MTD Board meeting
3 as distributed; seconded by Ms. Chaplan. Upon vote, the MOTION CARRIED.
4

5 B. Board Meeting (Closed Session) – January 25, 2023
6

7 MOTION by Mr. Hannon to approve the closed session minutes of the January 25, 2023 MTD Board
8 meeting as distributed; seconded by Ms. Chaplan. Upon vote, the MOTION CARRIED.
9

10 6. Communications

11 None
12

13 7. Reports

14 A. Managing Director

15 Mr. Gnadt reviewed the statistics for February 2023. February 2023 ridership has rebounded to
16 approximately 70% of pre-COVID numbers. Monthly operating revenue was strong – up 8% from February
17 2022. At April’s Board meeting, Operations will present a plan for a community team response to passengers
18 who are in crisis due to mental illness, substance use, or homelessness. On March 2, 2023, a fire broke out
19 at the Urbana School District 116 (USD 116) leased portion of the building at 1101 East University. The
20 Urbana Fire Department quickly had the fire under control, but USD 116’s lobby had extensive damage. MTD
21 is working with the insurance adjustors to get USD 116 back in their space as soon as possible.
22

23 8. Action Items

24 A. Update to Policies and Procedures No. 11 – Travel Reimbursement

25 The District maintains a Travel Reimbursement Policy (#11) to comply with the Local Government Travel
26 Expense Control Act (50 ILCS 150/10). The update included allowing MTD employees to keep and use
27 travel/reward miles/points earned on MTD business and requiring employees to book MTD travel expenses
28 on an MTD credit card only.
29

30 MOTION by Mr. Hannon to approve the Policies and Procedures No. 11 – Travel Reimbursement update;
31 seconded by Ms. Chaplan. Upon vote, the MOTION CARRIED.
32

33 B. Budget Revision for Hydraulic Elevator Modernization at Illinois Terminal

34 Due to the age and frequent use, the two elevators at Illinois Terminal have frequent mechanical break downs
35 that negatively impact access to the building for the tenants and visitors. Both elevators need extensive
36 modernization to improve performance and reliability. The original timeline for this project was FY2024;
37 however because of the urgency of the situation, Staff has requested a budget revision in the amount of
38 \$273,438 for Schindler Elevator Corporation to do the work as soon as possible so the elevators can remain
39 functional ensuring ADA compliance. This project will be 100% federally funded through the American
40 Rescue Plan Act of 2021 (ARPA) with sole source procurement justification as a result of the public exigency
41 of the repairs.
42

43 MOTION by Mr. Hannon to approve a budget revision so the Managing Director can execute a contract with
44 Schindler Elevator Corporation in the amount of \$273,438 to upgrade both elevators at Illinois Terminal;
45 seconded by Ms. Chaplan. Upon vote, the MOTION CARRIED.
46

47 C. Solar Array Operations and Maintenance Contract

48 MTD needs operations and maintenance services for its solar arrays located at 803 East University Avenue
49 and 1100 East University Avenue. The services will include optimizing the performance of the arrays and
50 establishing and maintaining native grasses and wildflowers around the ground-mounted array. An
51 Evaluation Committee reviewed the competitive bid proposals and selected Current Solutions of the Midwest
52 as being the best responsible and responsive bidder. The contract stipulated \$115,000 per year for three
53 years with an optional two-year extension. This contract will be funded with 65% (\$74,750) state funding and
54 35% (\$40,250) local funding.
55

56 MOTION by Mr. Hannon to authorize the Managing Director to execute a contract with Current Solutions of
57 the Midwest in the amount of \$115,000 per year for three years with the option of a two-year extension to
58 operate and maintain MTD’s solar arrays; seconded by Ms. Chaplan. Upon vote, the MOTION CARRIED.

1
2 **D. Zero Emission Transition Plan Update 2023**

3 In April 2022, MTD developed a Zero Emission Transition Plan to address the long-term fleet and
4 infrastructure management plan considering cost, availability of resources, policy and legislation, existing
5 and future facilities, partnerships, and workforce impact. The Plan update reflected recent changes in the
6 industry for zero-emission transit vehicles and revised federal guidance encouraging transit agencies to plan
7 for a completely zero-emission fleet. The updated Zero-Emission Transition Plan is a requirement to apply
8 for the Federal Transit Administration's (FTA's) Low or No Emission and Bus and Bus Facilities Grant
9 Programs. Within the Plan, the District planned to utilize battery electric buses in 2035 when battery electric
10 technology may be improved for transit applications. Mr. Fiscella suggested communicating with Ameren
11 now about the power needs ten years down the road when battery electric buses will need to pull power from
12 the grid in a limited timeframe at night to recharge.

13
14 MOTION by Mr. Fiscella to approve the Zero Emission Transition Plan dated March 2023; seconded by Ms.
15 Chaplan. Upon vote, the MOTION CARRIED.

16
17 **E. Resolution No. 2023-1 Low or No Emission Grant and Bus and Bus Facilities Grant for the Purchase of**
18 **Six 40' Hydrogen Fuel Cell Electric Buses and the Hydrogen Station Expansion**

19 A Board resolution is required to apply for the purchase of six 40' hydrogen fuel cell electric buses and
20 expanding the Hydrogen Station through FTA's Low or No Emission and Bus and Bus Facilities Grant
21 Programs. With this funding, the District plans to expand the hydrogen storage capacity to accept the
22 delivery of hydrogen to fuel 60-70 additional hydrogen fuel cell electric buses. Staff estimated the project
23 cost at \$18,883,000: \$16,385,650 federal funding and \$2,497,350 local funding.

24
25 MOTION by Mr. Hannon to authorize Resolution No. 2023-1 committing MTD to a 15% local match of
26 approximately \$2,497,350 for the submission of FTA's Low or No Emission/Bus and Bus Facilities grant
27 application; seconded by Ms. Chaplan. Upon vote, the MOTION CARRIED. Mr. Fiscella abstained from the
28 vote.

29
30 **F. Resolution No. 2023-2 Low or No Emission Grant for the Purchase of Ten 40' Hybrid Electric Buses**

31 A Board resolution is required to apply for the purchase of ten 40' hybrid electric buses through FTA's Low
32 or No Emission Grant Program. Under New Flyer's current contract, MTD can buy 40' and 60' hybrid buses
33 through March 2026. Staff estimated the project cost at \$7,000,000: \$5,950,000 federal funding and
34 \$1,050,000 local funding.

35
36 MOTION by Mr. Hannon to authorize Resolution No. 2023-2 committing MTD to a 15% local match of
37 approximately \$1,050,000 for the submission of FTA's Low or No Emission grant application; seconded by
38 Mr. Fiscella. Upon vote, the MOTION CARRIED.

39
40 **G. Resolution No. 2023-3 Bus and Bus Facilities Grant for the Construction of a Body Shop and Storage**
41 **Facility at 1209, 1211, and 1213 East University in Urbana**

42 A Board resolution is required to apply for the construction of a building to house the body shop and a
43 maintenance storage facility from the FTA's Bus and Bus Facilities grant program. In February 2023, the
44 District purchased the property located at 1209, 1211, and 1213 East University Avenue in Urbana. Staff
45 estimated the project cost at \$25,775,000: \$20,620,000 federal funding and \$5,155,000 local funding.

46
47 MOTION by Mr. Fiscella to authorize Resolution No. 2023-3 committing MTD to a 20% local match of
48 approximately \$5,155,000 for the submission of FTA's Bus and Bus Facilities grant application;
49 seconded by Ms. Chaplan. Upon vote, the MOTION CARRIED.

50
51 **9. Next Meeting**

- 52 A. Regular Board of Trustees Meeting – Wednesday, April 26, 2023 – 3:00 p.m. at Illinois Terminal –
53 45 East University Avenue, Champaign

54
55 **10. Adjournment**

56 MOTION by Mr. Hannon to adjourn; seconded by Mr. Diel. Upon vote, the MOTION CARRIED.

57
58 Mr. Diel adjourned the meeting at 3:45 p.m.

1
2
3
4
5
6
7
8
9
10
11
12
13
14
15

Submitted by:

Clerk

Approved:

Board of Trustees Chair



Champaign-Urbana Mass Transit District

MTD MISSION

Leading the way to greater mobility

MTD VISION

MTD goes beyond traditional boundaries to promote excellence in transportation.

MTD MANAGING DIRECTOR OPERATING NOTES

April, 2023

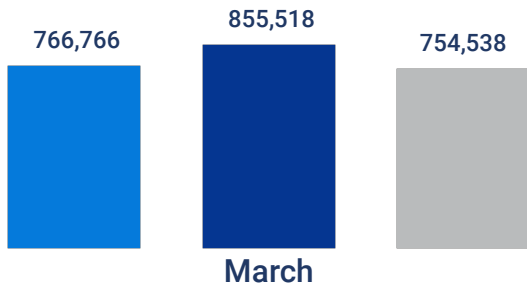
RIDERSHIP

Monthly Ridership

- FY2022
- FY2023
- 5 Year Average

↑ 11.57%

↑ 13.38%

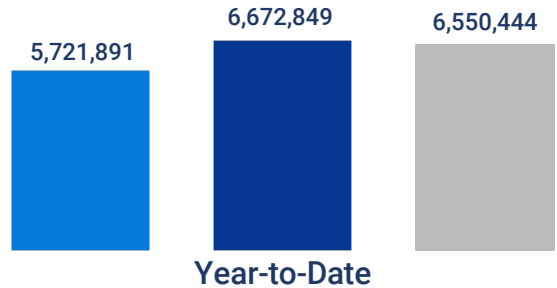


Year-to-Date Ridership

- FY2022
- FY2023
- 5 Year Average

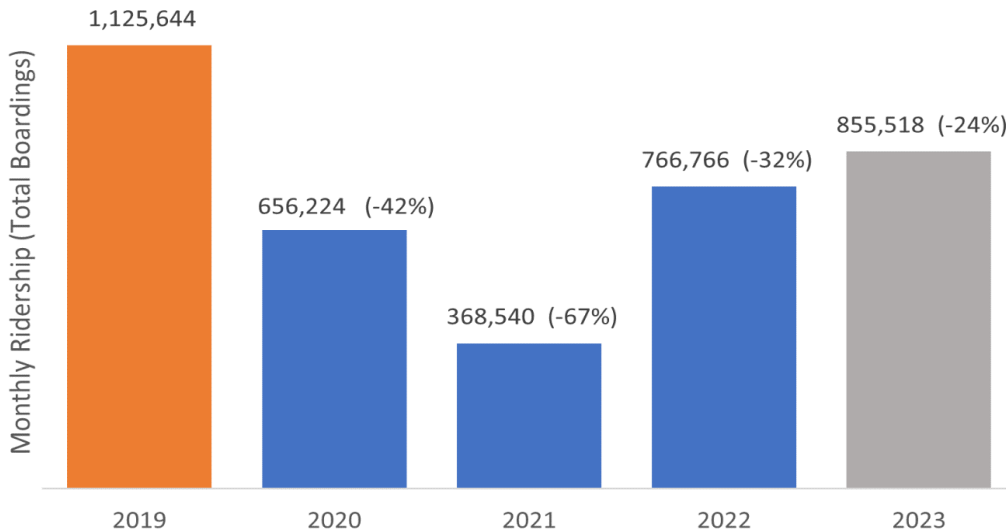
↑ 16.62%

↑ 1.87%

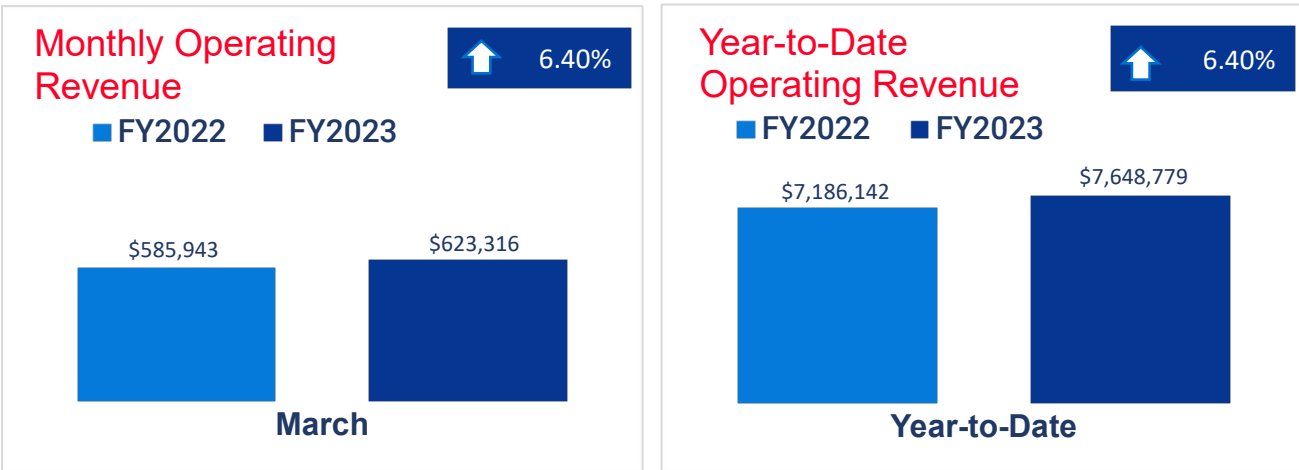


There were 855,518 rides this March. That is 12% more (~89,000 rides) than last March but 24% (~270,000 rides) less than March 2019. Ridership historically tends to fall from February to March (Spring Break) then rise slightly in April (no UI breaks).

March Ridership by Year

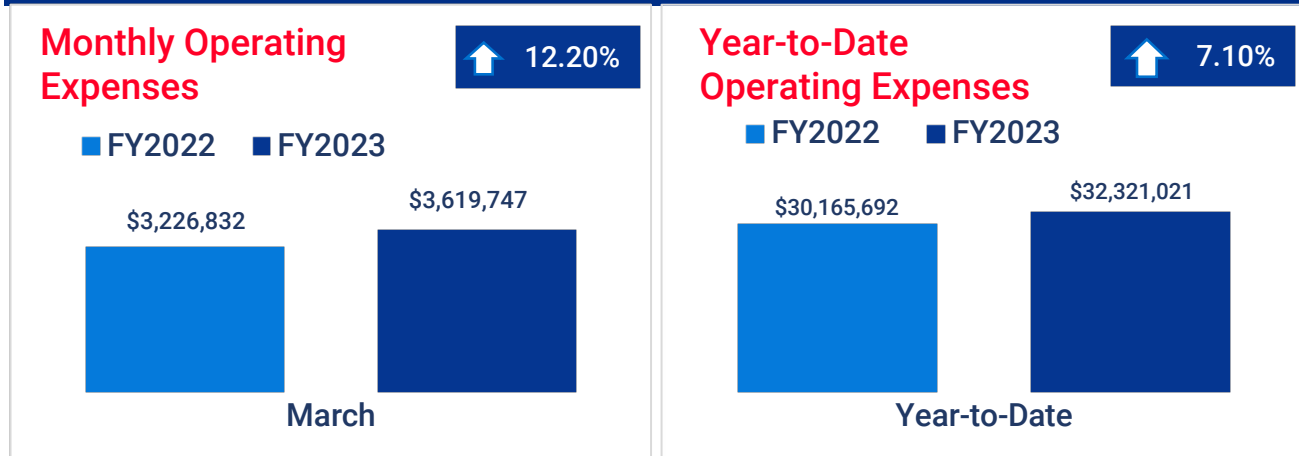


OPERATING REVENUE



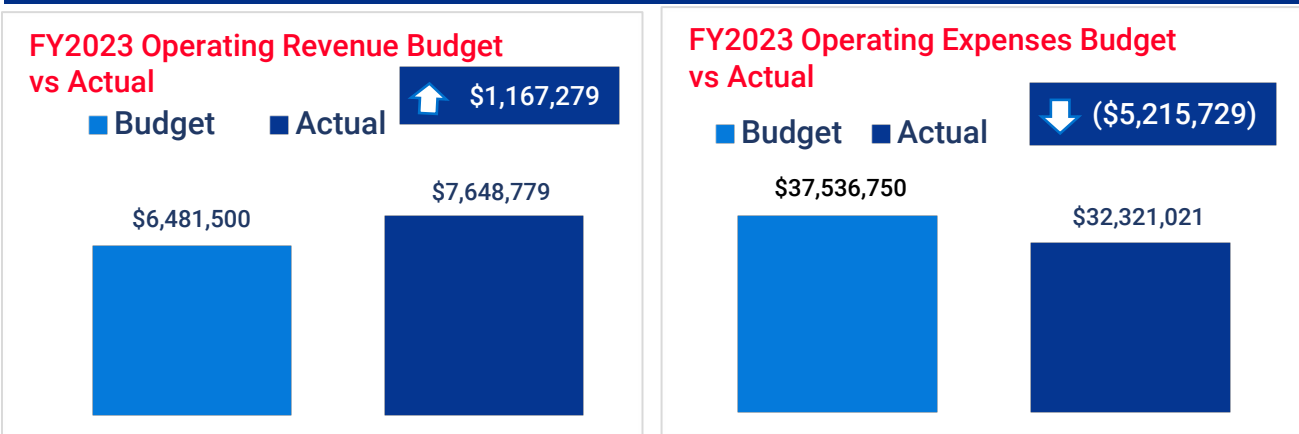
March 2023 operating revenue was 6.40% above March 2022, and year-to-date operating revenue was 6.40% above FY2022.

OPERATING EXPENSES



March operating expenses were 12.20% above March 2022. Year-to-date operating expenses were 7.10% above FY2022.

YEAR-TO-DATE REVENUE & EXPENSES



Year-to-date operating revenues were \$1,167,279 above budget while operating expenses were \$5,215,729 below budget.

MANAGING DIRECTOR'S NOTES

- 1) At the May 29, 2023 Board Meeting, Trustees approved a new policy awarding service credit for past experience. Within the two weeks following approval, 32 employees (across Operations, Maintenance, and Customer Service) submitted employment verification forms from previous jobs in the hopes to receive a raise due to the new Experience Credit policy. For 28 of them, that will literally pay off. Eight are receiving one year of credit on the wage scale for a 5% raise and the other 20 will get two years of credit for 10% raises. The raises happened immediately on their next paycheck. Verification forms and the worksheets that Human Resources used to calculate the level of credit due are all loaded electronically in an employee's Paycom account to access from their own devices at any time. Having these forms loaded into Paycom represents the start of building each employee's personnel file electronically and slowly moving away from hard copy files.
-

- 2) Sneak Peak for Fall 2023 Service Changes

The 14 Navy normally operates between Illinois Terminal and Carle at the Fields / YMCA in southwest Champaign. For the first few trips in the morning and last few in the evening, the Navy also runs on Mullikin in the Ironwood and Trails at Brittany subdivisions. These trips serve commuters heading to downtown Champaign. The current schedule for these trips serves Carle at the Fields, then Ironwood/Trails at Brittany, then Carle at the Fields again, then returns to regular route towards Illinois Terminal. This provides decent access to Carle at the Fields for Ironwood/Trails at Brittany but causes the Navy to run late in the morning and evening, affecting many passengers. After reviewing ridership and arrival time data, Planning is proposing a few modifications, the largest modifies these Navy trips to serve Carle at the Fields, then Mullikin, then enter back to the YMCA and turnaround for Illinois Terminal. This will save time on route and minimize the impact on total number of passengers. Hopefully this time next year the Navy will have much better schedule adherence in the morning and afternoon!

The 30 Lavender operates on Saturday and Sunday every 30 minutes whereas the weekday Lavender has a 35-minute trip time. This is done to allow transfers to other routes at Illinois Terminal, all of which serve Illinois Terminal every 30 minutes on weekends. The tighter schedule is doable in the morning and early evening on weekends, however afternoon traffic and midday ridership force the Lavender to run late in the afternoons. The run is not favored by our Operators because there is no time to use the bathroom, and both passengers and Operators can become frustrated by lateness. However, rescheduling the weekend Lavender to a 35-minute trip time would break scheduled transfers to other routes at Illinois Terminal. Planning reviewed arrival times by time of day to see where the Lavender was running late and why, we conducted an onboard passenger survey to get passenger thoughts on how the route could be improved, and we reviewed average arrival times vs scheduled arrival times at Illinois Terminal. These showed that the Lavender did not have enough recovery time at the end of its trips in the afternoon, that passengers preferred reliability over speed, and that lateness was breaking many of the scheduled transfers with other routes in the afternoon. For next year, Planning has proposed a Saturday and Sunday schedule that expands running time to ~33-minutes and will allow recovery time and bathroom breaks during the afternoon. This will break some of the current scheduled transfers (such as to Urbana) but create others (such as to west Champaign and from Savoy).

- 3) Last month, Dan Saphiere and Dave Goldenbaum – our Planners – presented to U of I Urban and Regional Planning students of UP 437, Public Transportation Planning. The 34 students were a mix of graduate and undergraduate students and are instructed by Sharif Ullah, a Transportation Engineer who previously worked at the Champaign County Regional Planning Commission. The class was split into two equal sized groups receiving a presentation, and then a tour of our Control Facility at our Administration & Operations Facility.

Dan presented an overview of MTD's service including the makeup of our ridership, our hub-and-spoke route design, and our environmentally friendly fleet. He showed GIS-based maps of population and ridership and discussed how our routing is designed to serve these populations during different times and days. Dan also

demonstrated how we monitor schedule adherence and overloading and how these issues can affect our service delivery and influence changes.

Dave talked to the students about how service is scheduled from its inception to its ultimate provision in the community. He used an example route (the 22 Illini) and followed how one coach assigned to a part of this service is broken into duties and ultimately selected by Operators on our work boards. The students asked very thoughtful, intelligent questions and were engaged throughout the process. Sharif commented afterwards that our presentations tracked very well with what the class had been studying and that they all enjoyed seeing these ideas applied in real-life.

- 4) We've expanded to a new module in our new payroll and learning management system, Paycom – Talent Management. One of the features of this module is to monitor the performance of employees which includes the documentation of discipline infractions. As a way to dip our toes into this feature and test the water, we've started using it to track all infractions related to the new attendance policy. Human Resources built electronic form templates in the system that have the necessary language, text boxes for additional comments, and a built-in workflow so that the form will notify the employee automatically as soon as it is approved.

For example, if an employee gets their third Tardy in a 12-month period, the Supervisor only needs to select the "Tardy #3" form in the system, add the date of the tardy and any additional notes if needed, and then sign and approve the form. The form will go to the employee's account (with a notification in their email and/or on their phone) and the employee can open it up, add their own comments, and then sign and approve the form. The form then goes back to the Supervisor for review. Once completed, the form will be housed in the employee's electronic personnel file in Paycom. This electronic process will not take the place of in-person meetings, however. Supervisors will still have face-to-face meetings with employees every time there is an infraction. This will simply replace the hard copy letterhead forms that Supervisors would have to prepare and carry for those meetings, making the documentation part of the process simpler, efficient, and environmentally friendly.

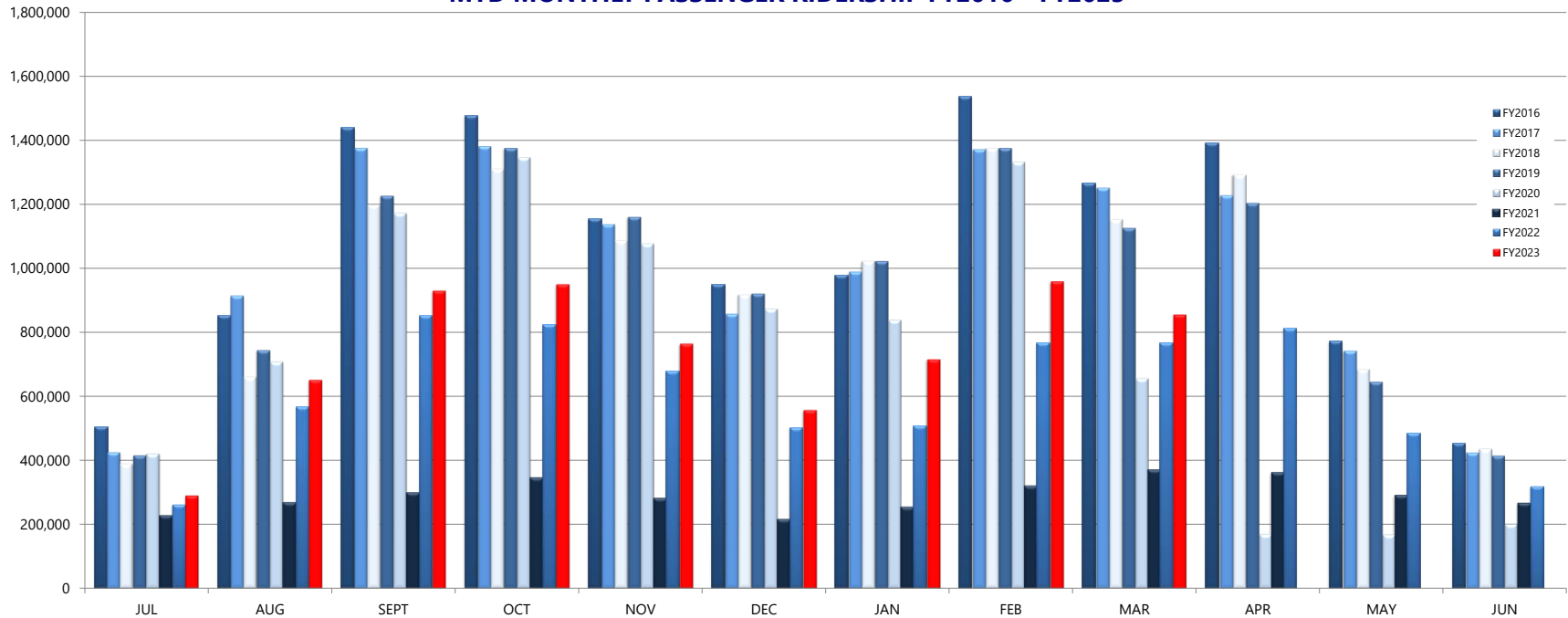
Champaign-Urbana Mass Transit District
 Fiscal-Year-to-Date Ridership Comparison

| | Mar-23 | Mar-22 | % Change | FY23 YTD | FY22 YTD | % Change |
|---------------------------------------|----------------|----------------|-----------------|------------------|------------------|-----------------|
| Adult Rides | 18,704 | 18,184 | 2.9% | 163,225 | 158,947 | 2.7% |
| School Rides | 35,964 | 31,930 | 12.6% | 284,412 | 239,381 | 18.8% |
| DASH/Senior - E & D Rides | 30,444 | 28,761 | 5.9% | 267,925 | 212,220 | 26.2% |
| U of I Faculty/Staff Rides | 31,868 | 30,663 | 3.9% | 264,149 | 183,300 | 44.1% |
| Annual Pass | 38,049 | 39,276 | -3.1% | 332,345 | 244,482 | 35.9% |
| U of I Student Rides | 670,671 | 592,191 | 13.3% | 5,118,687 | 4,502,437 | 13.7% |
| All Day Passes | 113 | 210 | -46.2% | 1,481 | 4,357 | -66.0% |
| Transfers | 5,845 | 6,194 | -5.6% | 53,456 | 43,813 | 22.0% |
| Saferides Connect | 3,320 | 3,846 | -13.7% | 20,030 | 17,530 | 14.3% |
| West Connect | 0 | 0 | - | 0 | 528 | -100.0% |
| Monthly Pass | 6,718 | 5,240 | 28.2% | 63,144 | 44,126 | 43.1% |
| Veterans Pass | 2,461 | 2,356 | 4.5% | 21,658 | 16,533 | 31.0% |
| Total Unlinked Passenger Rides | 844,157 | 758,851 | 11.2% | 6,590,512 | 5,667,654 | 16.3% |
| Half-Fare Cab Subsidy Rides | 78 | 146 | -46.6% | 1,093 | 1,244 | -12.1% |
| ADA Rides | 11,283 | 7,769 | 45.2% | 81,244 | 52,993 | 53.3% |
| TOTAL | 855,518 | 766,766 | 11.6% | 6,672,849 | 5,721,891 | 16.6% |

| | Mar-23 | Mar-22 |
|------------------------|---------------|---------------|
| Weekdays | 23 | 23 |
| UI Weekdays | 18 | 18 |
| Saturdays | 4 | 4 |
| UI Saturdays | 2 | 2 |
| Sundays | 4 | 4 |
| UI Sundays | 3 | 3 |
| Champaign Schools Days | 18 | 16 |
| Urbana School Days | 16 | 17 |
| Holidays | 0 | 0 |
| Average Temperature | 40.1 | 42.4 |
| Total Precipitation | 3.78 | 4.69 |
| Average Gas Price | \$3.57 | \$4.39 |

| | FY2015 | FY2016 | FY2017 | FY2018 | FY2019 | FY2020 | FY2021 | FY2022 | FY2023 |
|--------------|-------------------|-------------------|-------------------|-------------------|-------------------|------------------|------------------|------------------|------------------|
| JUL | 529,018 | 503,481 | 424,915 | 389,398 | 415,476 | 420,729 | 226,004 | 260,815 | 290,301 |
| AUG | 848,165 | 851,098 | 914,496 | 661,178 | 743,728 | 708,465 | 266,497 | 567,618 | 651,458 |
| SEPT | 1,514,019 | 1,439,491 | 1,375,803 | 1,197,928 | 1,226,527 | 1,172,335 | 297,090 | 850,842 | 929,906 |
| OCT | 1,606,340 | 1,478,275 | 1,380,990 | 1,310,380 | 1,375,516 | 1,346,402 | 343,765 | 822,915 | 949,844 |
| NOV | 1,236,071 | 1,153,897 | 1,137,573 | 1,087,343 | 1,160,184 | 1,076,993 | 279,977 | 678,231 | 764,340 |
| DEC | 1,068,608 | 949,030 | 857,837 | 917,782 | 920,718 | 873,429 | 214,183 | 501,741 | 556,970 |
| JAN | 996,469 | 977,223 | 989,700 | 1,022,713 | 1,022,403 | 838,969 | 252,336 | 506,560 | 715,390 |
| FEB | 1,576,687 | 1,537,540 | 1,371,778 | 1,375,553 | 1,375,560 | 1,331,716 | 318,071 | 766,403 | 959,122 |
| MAR | 1,305,425 | 1,266,676 | 1,251,352 | 1,153,015 | 1,125,644 | 656,224 | 368,540 | 766,766 | 855,518 |
| APR | 1,402,475 | 1,391,286 | 1,228,127 | 1,292,424 | 1,203,603 | 169,747 | 360,134 | 813,280 | |
| MAY | 940,147 | 770,860 | 742,253 | 684,678 | 645,383 | 168,484 | 289,030 | 485,172 | |
| JUN | 528,360 | 451,663 | 424,219 | 435,993 | 414,421 | 201,092 | 264,733 | 317,937 | |
| TOTAL | 13,551,784 | 12,770,520 | 12,099,043 | 11,528,385 | 11,629,163 | 8,964,585 | 3,480,360 | 7,338,280 | 6,672,849 |

MTD MONTHLY PASSENGER RIDERSHIP FY2016 - FY2023



Route Performance Report

March 2023

Weekdays

| | Passengers | Revenue Hours | Passengers Per Revenue Hour | Revenue Hour Performance Comparison + | Revenue Miles | Passengers Per Revenue Mile | Revenue Mile Performance Comparison + |
|--------------------------------------|----------------|------------------|-----------------------------|---------------------------------------|-------------------|-----------------------------|---------------------------------------|
| Daytime Campus Fixed Route | 308,951 | 3,357.53 | 92.02 | | 37,005.73 | 8.35 | |
| 1 Yellow Hopper | 17,712 | 171.58 | 103.23 | 1.12 | 1,647.02 | 10.75 | 1.29 |
| 10 Gold Hopper | 12,509 | 188.98 | 66.19 | 0.72 | 2,362.38 | 5.30 | 0.63 |
| 12 Teal | 64,039 | 677.72 | 94.49 | 1.03 | 7,237.99 | 8.85 | 1.06 |
| 13 Silver | 48,752 | 476.43 | 102.33 | 1.11 | 5,527.05 | 8.82 | 1.06 |
| 21 Raven | 9,079 | 218.88 | 41.48 | 0.45 | 2,313.88 | 3.92 | 0.47 |
| 22 Illini | 137,783 | 1,178.63 | 116.90 | 1.27 | 12,515.13 | 11.01 | 1.32 |
| 24 Link | 19,077 | 445.30 | 42.84 | 0.47 | 5,402.29 | 3.53 | 0.42 |
| Daytime Community Fixed Route | 332,609 | 11,297.80 | 29.44 | | 155,028.38 | 2.15 | |
| 1 Yellow | 47,020 | 1,187.98 | 39.58 | 1.34 | 15,462.23 | 3.04 | 1.42 |
| 2 Red | 34,278 | 1,159.19 | 29.57 | 1.00 | 15,270.07 | 2.24 | 1.05 |
| 3 Lavender | 16,362 | 656.93 | 24.91 | 0.85 | 8,911.47 | 1.84 | 0.86 |
| 4 Blue | 17,964 | 569.67 | 31.53 | 1.07 | 7,061.30 | 2.54 | 1.19 |
| 5 Green | 50,729 | 1,291.16 | 39.29 | 1.33 | 17,305.75 | 2.93 | 1.37 |
| 5 Green Express | 10,861 | 324.38 | 33.48 | 1.14 | 4,940.48 | 2.20 | 1.02 |
| 5 Green Hopper | 26,954 | 599.83 | 44.94 | 1.53 | 7,939.40 | 3.39 | 1.58 |
| 6 Orange | 14,221 | 782.20 | 18.18 | 0.62 | 9,984.17 | 1.42 | 0.66 |
| 6 Orange Hopper | 6,401 | 297.42 | 21.52 | 0.73 | 3,452.11 | 1.85 | 0.86 |
| 7 Grey | 23,039 | 1,038.20 | 22.19 | 0.75 | 14,220.78 | 1.62 | 0.76 |
| 8 Bronze | 6,483 | 332.60 | 19.49 | 0.66 | 4,928.54 | 1.32 | 0.61 |
| 9 Brown | 32,575 | 1,281.24 | 25.42 | 0.86 | 17,819.07 | 1.83 | 0.85 |
| 10 Gold | 35,750 | 1,020.45 | 35.03 | 1.19 | 14,088.47 | 2.54 | 1.18 |
| 11 Ruby | 325 | 123.30 | 2.64 | 0.09 | 2,345.02 | 0.14 | 0.06 |
| 14 Navy | 3,635 | 253.00 | 14.37 | 0.49 | 4,607.61 | 0.79 | 0.37 |
| 16 Pink | 6,012 | 380.26 | 15.81 | 0.54 | 6,691.93 | 0.90 | 0.42 |

* The Percent of Group Ridership shows how the ridership for the route compares to the group
 + Performance Comparison shows each Route's Passengers Per Revenue Hour or Mile compared to the Route Group's average
 Routes that are continually above 1.5 or below 0.5 may need to be examined as they are not performing within the Group Standards.

| | Passengers | Revenue Hours | Passengers Per Revenue Hour | Revenue Hour Performance Comparison + | Revenue Miles | Passengers Per Revenue Mile | Revenue Mile Performance Comparison + |
|--------------------------------------|----------------|------------------|-----------------------------|---------------------------------------|-------------------|-----------------------------|---------------------------------------|
| Evening Campus Fixed Route | 68,535 | 906.92 | 75.57 | | 10,661.70 | 6.43 | |
| 120 Teal | 18,756 | 293.72 | 63.86 | 0.85 | 3,432.95 | 5.46 | 0.85 |
| 130 Silver | 5,415 | 123.10 | 43.99 | 0.58 | 1,460.78 | 3.71 | 0.58 |
| 130 Silver Limited | 305 | 24.00 | 12.71 | 0.17 | 275.19 | 1.11 | 0.17 |
| 220 Illini | 43,248 | 420.78 | 102.78 | 1.36 | 4,991.32 | 8.66 | 1.35 |
| 220 Illini Limited | 811 | 45.32 | 17.90 | 0.24 | 501.45 | 1.62 | 0.25 |
| Evening Community Fixed Route | 43,835 | 1,626.73 | 26.95 | | 23,247.00 | 1.89 | |
| 50 Green | 17,196 | 454.72 | 37.82 | 1.40 | 6,417.30 | 2.68 | 1.42 |
| 50 Green Hopper | 7,114 | 174.42 | 40.79 | 1.51 | 2,342.24 | 3.04 | 1.61 |
| 70 Grey | 3,688 | 278.70 | 13.23 | 0.49 | 3,972.24 | 0.93 | 0.49 |
| 100 Yellow | 14,464 | 550.12 | 26.29 | 0.98 | 7,392.28 | 1.96 | 1.04 |
| 110 Ruby | 945 | 80.12 | 11.80 | 0.44 | 1,336.44 | 0.71 | 0.37 |
| 180 Lime | 428 | 88.67 | 4.83 | 0.18 | 1,786.50 | 0.24 | 0.13 |
| Total | 753,930 | 17,188.98 | 43.86 | | 225,942.82 | 3.34 | |

* The Percent of Group Ridership shows how the ridership for the route compares to the group
+ Performance Comparison shows each Route's Passengers Per Revenue Hour or Mile compared to the Route Group's average
Routes that are continually above 1.5 or below 0.5 may need to be examined as they are not performing within the Group Standards.

Champaign-Urbana Mass Transit District

April 19, 2023

Route Performance Report

March 2023

Weekends

| | Passengers | Revenue Hours | Passengers Per Revenue Hour | Revenue Hour Performance Comparison + | Revenue Miles | Passengers Per Revenue Mile | Revenue Mile Performance Comparison + |
|--------------------------------------|---------------|---------------|-----------------------------|---------------------------------------|------------------|-----------------------------|---------------------------------------|
| Saturday Daytime Campus Fixed | 13,100 | 224.23 | 58.42 | | 2,496.44 | 5.25 | |
| 120 Teal | 5,984 | 94.53 | 63.30 | 1.08 | 1,029.94 | 5.81 | 1.11 |
| 130 Silver | 1,871 | 51.37 | 36.42 | 0.62 | 601.87 | 3.11 | 0.59 |
| 220 Illini | 5,245 | 78.33 | 66.96 | 1.15 | 864.63 | 6.07 | 1.16 |
| Saturday Daytime Community | 21,156 | 753.99 | 28.06 | | 10,429.18 | 2.03 | |
| 20 Red | 2,369 | 99.20 | 23.88 | 0.85 | 1,296.85 | 1.83 | 0.90 |
| 30 Lavender | 1,571 | 86.73 | 18.11 | 0.65 | 1,343.28 | 1.17 | 0.58 |
| 50 Green | 6,842 | 148.87 | 45.96 | 1.64 | 1,920.23 | 3.56 | 1.76 |
| 70 Grey | 3,203 | 156.68 | 20.44 | 0.73 | 2,107.42 | 1.52 | 0.75 |
| 100 Yellow | 6,273 | 176.00 | 35.64 | 1.27 | 2,324.57 | 2.70 | 1.33 |
| 110 Ruby | 596 | 42.07 | 14.17 | 0.50 | 709.75 | 0.84 | 0.41 |
| 180 Lime | 302 | 44.44 | 6.80 | 0.24 | 727.08 | 0.42 | 0.20 |
| Saturday Evening Campus Fixed | 12,816 | 173.57 | 73.84 | | 1,994.71 | 6.43 | |
| 120 Teal | 2,716 | 48.60 | 55.88 | 0.76 | 533.02 | 5.10 | 0.79 |
| 130 Silver | 1,082 | 38.50 | 28.10 | 0.38 | 450.07 | 2.40 | 0.37 |
| 220 Illini | 9,018 | 86.47 | 104.29 | 1.41 | 1,011.61 | 8.91 | 1.39 |
| Saturday Evening Community | 8,717 | 310.30 | 28.09 | | 4,229.26 | 2.06 | |
| 50 Green | 3,299 | 77.30 | 42.68 | 1.52 | 1,059.16 | 3.11 | 1.51 |
| 50 Green Hopper | 1,883 | 40.00 | 47.08 | 1.68 | 516.04 | 3.65 | 1.77 |
| 70 Grey | 664 | 53.27 | 12.47 | 0.44 | 727.33 | 0.91 | 0.44 |
| 100 Yellow | 2,724 | 113.20 | 24.06 | 0.86 | 1,481.56 | 1.84 | 0.89 |
| 110 Ruby | 92 | 12.53 | 7.34 | 0.26 | 213.40 | 0.43 | 0.21 |
| 180 Lime | 55 | 14.00 | 3.93 | 0.14 | 231.76 | 0.24 | 0.12 |

* The Percent of Group Ridership shows how the ridership for the route compares to the group

+ Performance Comparison shows each Route's Passengers Per Revenue Hour or Mile compared to the Route Group's average
Routes that are continually above 1.5 or below 0.5 may need to be examined as they are not performing within the Group Standards.

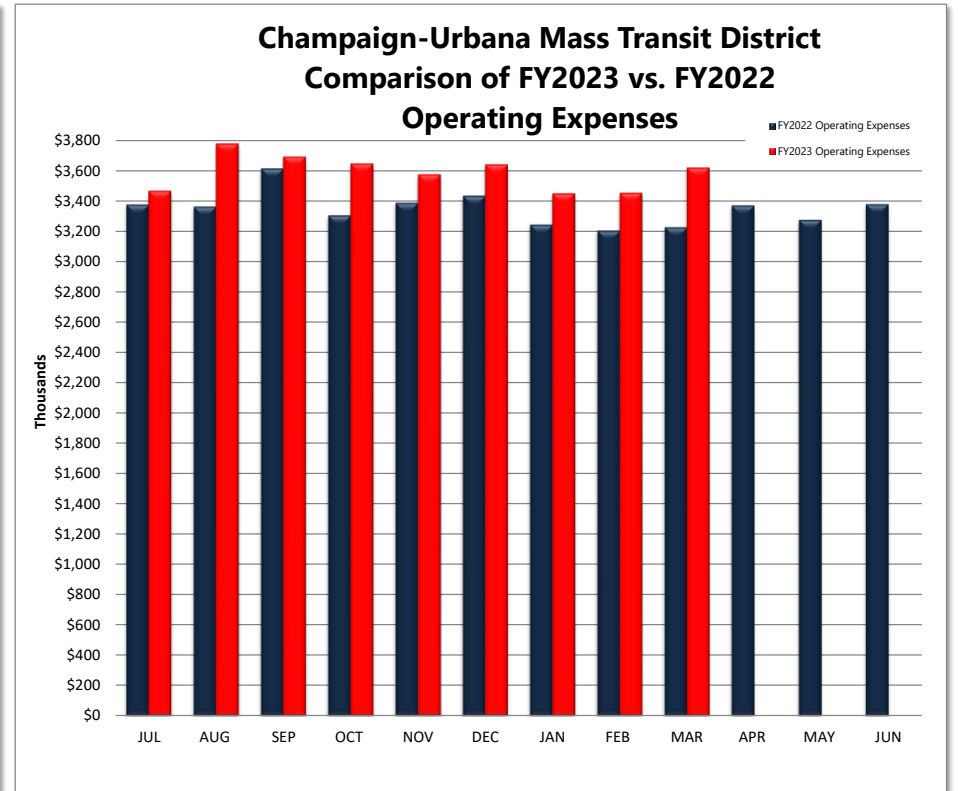
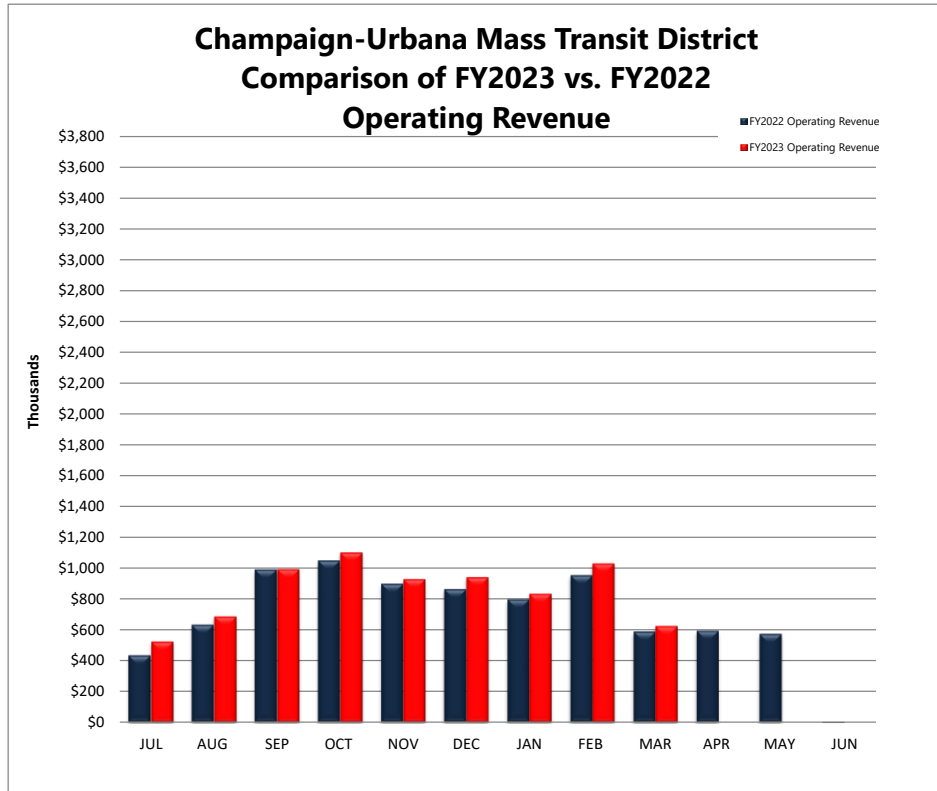
| | Passengers | Revenue Hours | Passengers Per Revenue Hour | Revenue Hour Performance Comparison + | Revenue Miles | Passengers Per Revenue Mile | Revenue Mile Performance Comparison + |
|---|---------------|-----------------|-----------------------------|---------------------------------------|------------------|-----------------------------|---------------------------------------|
| Sunday Daytime Campus Fixed Route | 8,753 | 137.13 | 63.83 | | 1,538.84 | 5.69 | |
| 120 Teal | 2,808 | 35.82 | 78.40 | 1.23 | 392.86 | 7.15 | 1.26 |
| 130 Silver | 1,742 | 34.65 | 50.27 | 0.79 | 409.43 | 4.25 | 0.75 |
| 220 Illini | 4,203 | 66.67 | 63.05 | 0.99 | 736.56 | 5.71 | 1.00 |
| Sunday Daytime Community Fixed Route | 14,677 | 570.95 | 25.71 | | 8,123.80 | 1.81 | |
| 30 Lavender | 1,064 | 71.47 | 14.89 | 0.58 | 1,104.92 | 0.96 | 0.53 |
| 50 Green | 5,817 | 136.35 | 42.66 | 1.66 | 1,756.03 | 3.31 | 1.83 |
| 70 Grey | 2,468 | 137.67 | 17.93 | 0.70 | 1,861.43 | 1.33 | 0.73 |
| 100 Yellow | 4,677 | 133.33 | 35.08 | 1.36 | 1,765.05 | 2.65 | 1.47 |
| 110 Ruby | 439 | 32.07 | 13.69 | 0.53 | 544.37 | 0.81 | 0.45 |
| 180 Lime | 212 | 60.07 | 3.53 | 0.14 | 1,092.00 | 0.19 | 0.11 |
| Sunday Evening Campus Fixed Route | 10,841 | 169.25 | 64.05 | | 1,962.59 | 5.52 | |
| 120 Teal | 3,622 | 52.35 | 69.19 | 1.08 | 568.09 | 6.38 | 1.15 |
| 130 Silver | 833 | 38.85 | 21.44 | 0.33 | 456.85 | 1.82 | 0.33 |
| 220 Illini | 6,386 | 78.05 | 81.82 | 1.28 | 937.65 | 6.81 | 1.23 |
| Sunday Evening Community Fixed Route | 2,579 | 42.50 | 60.68 | | 570.61 | 4.52 | |
| 50 Green | 1,532 | 21.00 | 72.95 | 1.20 | 273.75 | 5.60 | 1.24 |
| 100 Yellow | 1,047 | 21.50 | 48.70 | 0.80 | 296.87 | 3.53 | 0.78 |
| Total | 92,639 | 2,381.92 | 38.89 | | 31,345.43 | 2.96 | |

* The Percent of Group Ridership shows how the ridership for the route compares to the group
+ Performance Comparison shows each Route's Passengers Per Revenue Hour or Mile compared to the Route Group's average
Routes that are continually above 1.5 or below 0.5 may need to be examined as they are not performing within the Group Standards.

Champaign-Urbana Mass Transit District
 Comparison of FY2023 vs FY2022 Revenue and Expenses

April 19, 2023

| | JUL | AUG | SEP | OCT | NOV | DEC | JAN | FEB | MAR | APR | MAY | JUN |
|----------------------------------|-------------|-------------|-------------|-------------|-------------|-------------|-------------|-------------|-------------|-------------|-------------|-------------|
| FY2022 Operating Revenue | \$431,925 | \$630,757 | \$987,941 | \$1,045,828 | \$896,190 | \$860,757 | \$795,610 | \$951,191 | \$585,943 | \$591,962 | \$570,813 | -\$392,222 |
| FY2023 Operating Revenue | \$523,740 | \$685,651 | \$991,317 | \$1,099,592 | \$926,476 | \$939,010 | \$831,967 | \$1,027,710 | \$623,316 | | | |
| FY2022 Operating Expenses | \$3,376,362 | \$3,364,007 | \$3,616,199 | \$3,306,720 | \$3,389,381 | \$3,436,470 | \$3,244,660 | \$3,205,061 | \$3,226,832 | \$3,372,214 | \$3,275,499 | \$3,379,302 |
| FY2023 Operating Expenses | \$3,465,500 | \$3,778,872 | \$3,692,179 | \$3,646,228 | \$3,575,186 | \$3,641,176 | \$3,449,728 | \$3,452,404 | \$3,619,747 | | | |
| FY2022 Operating Ratio | 12.79% | 18.75% | 27.32% | 31.63% | 26.44% | 25.05% | 24.52% | 29.68% | 18.16% | 17.55% | 17.43% | -11.61% |
| FY2023 Operating Ratio | 15.11% | 18.14% | 26.85% | 30.16% | 25.91% | 25.79% | 24.12% | 29.77% | 17.22% | | | |



Champaign-Urbana Mass Transit District
 March 2023 Statistical Summary

| HOURS | Mar 2022 | Mar 2023 | % Change | FY2022 to Date | FY2023 to Date | % Change |
|------------------------------|-----------|------------------|--------------|----------------|-------------------|---------------|
| Passenger Revenue | 21,363.90 | 21,798.80 | 2.0% | 181,001.93 | 182,205.80 | 0.7% |
| Vacation/Holiday/Earned Time | 4,644.57 | 6,881.77 | 48.2% | 59,191.73 | 62,146.73 | 5.0% |
| Non-Revenue | 6,677.16 | 4,739.03 | -29.0% | 56,735.45 | 46,894.90 | -17.3% |
| TOTAL | 32,685.63 | 33,419.60 | 2.25% | 296,929.11 | 291,247.43 | -1.91% |

| REVENUE/EXPENSES | Mar 2022 | Mar 2023 | % Change | FY2022 to Date | FY2023 to Date | % Change |
|--|----------------|-----------------------|----------|-----------------|------------------------|----------|
| Operating Revenue | \$585,942.52 | \$623,315.88 | 6.4% | \$7,186,141.86 | \$7,648,779.10 | 6.4% |
| Operating Expenses | \$3,226,831.84 | \$3,619,747.45 | 12.2% | \$30,165,691.69 | \$32,321,020.65 | 7.1% |
| Operating Ratio | 18.16% | 17.22% | -5.2% | 23.82% | 23.67% | -0.7% |
| Passenger Revenue/Revenue Vehicle Hour | \$22.33 | \$22.41 | 0.4% | \$34.34 | \$35.59 | 3.6% |

| RIDERSHIP | Mar 2022 | Mar 2023 | % Change | FY2022 to Date | FY2023 to Date | % Change |
|-------------------|----------|----------------|----------|----------------|------------------|----------|
| Revenue Passenger | 752,657 | 838,312 | 11.4% | 5,623,841 | 6,537,056 | 16.2% |
| Transfers | 6,194 | 5,845 | -5.6% | 43,813 | 53,456 | 22.0% |
| Total Unlinked | 758,851 | 844,157 | 11.2% | 5,667,654 | 6,590,512 | 16.3% |
| ADA Riders | 7,769 | 11,283 | 45.2% | 52,993 | 81,244 | 53.3% |
| Half Fare Cab | 146 | 78 | -46.6% | 1,244 | 1,093 | -12.1% |
| TOTAL | 766,766 | 855,518 | 11.57% | 5,721,891 | 6,672,849 | 16.62% |

| PASSENGERS/REVENUE HOUR | Mar 2022 | Mar 2023 | % Change | FY2022 to Date | FY2023 to Date | % Change |
|--------------------------------|----------|--------------|----------|----------------|----------------|----------|
| Hour | 35.52 | 38.72 | 9.0% | 31.31 | 36.17 | 15.5% |

Champaign Urbana Mass Transit District Budget Analysis Report

From Fiscal Year: 2023 From Period 9
Thru Fiscal Year: 2023 Thru Period 9

Division: 00 Champaign Urbana Mass Transit District

As of: 3/31/2023

| Mar-2023 | Budget This Period | Mar-2022 | Act/Bgt Var % | | Actual Ytd | Jul-2022 thru Mar-2023 Budget Ytd | Last Ytd | Act/Bgt Var % |
|---|-----------------------|-------------------|------------------|---|---------------------|--------------------------------------|---------------------|------------------|
| 4000000000 **** R E V E N U E **** | | | | | | | | |
| 4000000099 ** TRANSPORTATION REVENUE | | | | | | | | |
| 4010000000 * PASSENGER FARES | | | | | | | | |
| 29,402.23 | 33,333.33 | 28,469.15 | -11.79% | 4010100000 FULL ADULT FARES | 264,860.32 | 299,999.97 | 214,649.87 | -11.71% |
| 220.00 | 833.33 | 320.00 | -73.60% | 4010300000 STUDENT FARES | 4,283.00 | 7,499.97 | 2,999.50 | -42.89% |
| -205.00 | 0.00 | -96.00 | -100.00% | 4010700000 FARE REFUNDS | -1,384.00 | 0.00 | -600.00 | -100.00% |
| 9,928.00 | 12,500.00 | 9,150.00 | -20.58% | 4010800000 ANNUAL PASS REVENUE | 86,020.00 | 112,500.00 | 56,301.00 | -23.54% |
| 521.00 | 2,916.67 | 987.00 | -82.14% | 4011000000 HALF FARE CAB | 8,156.50 | 26,250.03 | 8,305.50 | -68.93% |
| 5,283.00 | 3,333.33 | 3,497.00 | 58.49% | 4011100000 ADA TICKETS & FARES | 41,383.00 | 29,999.97 | 23,744.00 | 37.94% |
| 45,149.23 | 52,916.66 | 42,327.15 | -14.68% | 4019900099 * TOTAL PASSENGER FARES | 403,318.82 | 476,249.94 | 305,399.87 | -15.31% |
| 4020000000 * SPECIAL TRANSIT & SCHOOL FARE | | | | | | | | |
| 335,057.97 | 483,333.33 | 327,925.00 | -30.68% | 4020300000 U OF I CAMPUS SERVICE | 5,270,940.97 | 4,349,999.97 | 5,113,510.00 | 21.17% |
| 26,882.17 | 27,083.33 | 25,546.25 | -0.74% | 4020500000 ADA - U I & DSC CONTRACTS | 241,939.53 | 243,749.97 | 229,916.25 | -0.74% |
| 81,906.56 | 62,083.33 | 82,155.56 | 31.93% | 4030100000 SCHOOL SERVICE FARES | 573,321.92 | 558,749.97 | 574,899.92 | 2.61% |
| 443,846.70 | 572,499.99 | 435,626.81 | -22.47% | 4039999999 * TOTAL SPECIAL TRANSIT & SCHOO | 6,086,202.42 | 5,152,499.91 | 5,918,326.17 | 18.12% |
| 4060000000 *AUXILIARY TRANSPORTATION REVE | | | | | | | | |
| 1,914.12 | 2,083.33 | 1,675.09 | -8.12% | 4060100000 I.T. COMMISSIONS | 16,606.70 | 18,749.97 | 17,035.88 | -11.43% |
| 34,566.55 | 25,000.00 | 24,948.89 | 38.27% | 4060300000 ADVERTISING REVENUE | 307,587.95 | 225,000.00 | 234,739.88 | 36.71% |
| 36,480.67 | 27,083.33 | 26,623.98 | 34.70% | 4069900098 *TOTAL AUXILIARY TRANSPORTATIO | 324,194.65 | 243,749.97 | 251,775.76 | 33.00% |
| 525,476.60 | 652,499.98 | 504,577.94 | -19.47% | 4069900099 ** TOTAL TRANSPORTATION REVEN | 6,813,715.89 | 5,872,499.82 | 6,475,501.80 | 16.03% |
| 4070000000 ** NON-TRANSPORTATION REVENUE | | | | | | | | |
| 1,804.36 | 1,833.33 | 1,945.27 | -1.58% | 4070100000 SALE OF MAINTENANCE SERVICES | 15,057.39 | 16,499.97 | 14,652.61 | -8.74% |
| 0.00 | 0.00 | 0.00 | 0.00% | 4070200000 RENTAL OF REVENUE VEHICLES | 0.00 | 0.00 | 0.00 | 0.00% |
| 36,208.49 | 35,416.67 | 32,349.10 | 2.24% | 4070300000 BUILDING RENTAL - IL TERMINAL | 334,629.72 | 318,750.03 | 318,310.83 | 4.98% |
| 2,001.05 | 17,916.67 | 17,924.38 | -88.83% | 4070300002 BUILDING RENTAL - 801 & 1101 | 148,421.09 | 161,250.03 | 161,319.42 | -7.96% |
| 56,299.50 | 12,500.00 | 13,324.16 | 350.40% | 4070400000 INVESTMENT INCOME | 307,911.12 | 112,500.00 | 113,980.58 | 173.70% |
| 0.00 | 0.00 | -4,347.90 | 0.00% | 4070400002 +/- FAIR VALUE OF INVESTMENT | -2,160.00 | 0.00 | -38,874.15 | -100.00% |
| 0.00 | 0.00 | 31.84 | 0.00% | 4070800000 OVER OR SHORT | 3,755.45 | 0.00 | 449.66 | 100.00% |
| 0.00 | 0.00 | 11,134.70 | 0.00% | 4079800000 GAIN ON FIXED ASSET DISPOSAL | 2,500.00 | 0.00 | 20,397.70 | 100.00% |

Champaign Urbana Mass Transit District Budget Analysis Report

From Fiscal Year: 2023 From Period 9
Thru Fiscal Year: 2023 Thru Period 9

Division: 00 Champaign Urbana Mass Transit District

As of: 3/31/2023

| Mar-2023 | Budget This Period | Mar-2022 | Act/Bgt Var % | | Actual Ytd | Jul-2022 thru Mar-2023 Budget Ytd | Last Ytd | Act/Bgt Var % |
|---|-----------------------|---------------------|------------------|---|----------------------|--------------------------------------|----------------------|------------------|
| 1,525.88 | 0.00 | 9,003.03 | 100.00% | 4079900001 OTHER NON-TRANSPORTATION REV | 24,948.44 | 0.00 | 120,403.41 | 100.00% |
| 97,839.28 | 67,666.67 | 81,364.58 | 44.59% | 4079900099 ** TOTAL NON-TRANSPORTATION RE | 835,063.21 | 609,000.03 | 710,640.06 | 37.12% |
| 623,315.88 | 720,166.65 | 585,942.52 | -13.45% | 4079999999 *** TOTAL TRANS & NON-TRANS REV | 7,648,779.10 | 6,481,499.85 | 7,186,141.86 | 18.01% |
| 4080000000 ** TAX REVENUE | | | | | | | | |
| 816,666.00 | 816,666.67 | 784,600.00 | 0.00% | 4080100000 PROPERTY TAX REVENUE | 7,349,994.00 | 7,350,000.03 | 7,061,400.00 | 0.00% |
| 0.00 | 0.00 | 0.00 | 0.00% | 4080100001 PROPERTY TAX - UNCOLLECTIBLE R | 0.00 | 0.00 | -21,815.31 | 0.00% |
| 85,996.91 | 16,666.67 | 116,501.57 | 415.98% | 4080600000 REPLACEMENT TAX REVENUE | 463,016.41 | 150,000.03 | 417,155.31 | 208.68% |
| 0.00 | 0.00 | 0.00 | 0.00% | 4089900001 MISCELLANEOUS PROPERTY TAXES | 6,025.00 | 0.00 | 0.00 | 100.00% |
| 902,662.91 | 833,333.34 | 901,101.57 | 8.32% | 4089999999 ** TOTAL TAX REVENUE | 7,819,035.41 | 7,500,000.06 | 7,456,740.00 | 4.25% |
| 4110000000 ** STATE GRANTS & REIMBURSEME | | | | | | | | |
| 2,340,000.00 | 2,819,754.17 | 2,057,000.00 | -17.01% | 4110100000 OPERATING ASSISTANCE - STATE | 21,340,750.00 | 25,377,787.53 | 19,498,400.00 | -15.91% |
| 0.00 | 0.00 | 0.00 | 0.00% | 4110100001 OPERATING ASSIST - DEBT SERVICE | 6,078.80 | 0.00 | 0.00 | 100.00% |
| 0.00 | 175,750.00 | 55,560.00 | -100.00% | 4111000000 STATE GRANT REVENUE | 0.00 | 1,581,750.00 | 6,945,399.52 | -100.00% |
| 0.00 | 0.00 | 0.00 | 0.00% | 4111000001 STATE GRANT REVENUE - PASS TH | 0.00 | 0.00 | 0.00 | 0.00% |
| 0.00 | 0.00 | 5,255.54 | 0.00% | 4119900000 STATE REIMBURSEMENTS | 0.00 | 0.00 | 18,473.50 | 0.00% |
| 0.00 | 0.00 | 0.00 | 0.00% | 4119900001 STATE REIMB - PASS THRU \$ | 0.00 | 0.00 | 0.00 | 0.00% |
| 2,340,000.00 | 2,995,504.17 | 2,117,815.54 | -21.88% | 4119999999 ** TOTAL STATE GRANTS & REIMB | 21,346,828.80 | 26,959,537.53 | 26,462,273.02 | -20.82% |
| 4130000000 ** FEDERAL GRANTS & REIMBURSE | | | | | | | | |
| 0.00 | 250,000.00 | 0.00 | -100.00% | 4130100000 OPERATING ASSISTANCE - FEDERAL | 0.00 | 2,250,000.00 | 0.00 | -100.00% |
| 1,244,560.00 | 6,192,083.33 | 3,337,874.00 | -79.90% | 4130500000 FEDERAL GRANT REVENUE | 6,781,196.93 | 55,728,749.97 | 6,142,237.92 | -87.83% |
| 0.00 | 0.00 | 0.00 | 0.00% | 4130600000 FEDERAL GRANT PASS THRU \$ | 0.00 | 0.00 | 0.00 | 0.00% |
| 0.00 | 0.00 | 0.00 | 0.00% | 4139900000 FEDERAL REIMBURSEMENTS | 0.00 | 0.00 | 0.00 | 0.00% |
| 1,244,560.00 | 6,442,083.33 | 3,337,874.00 | -80.68% | 4139999999 ** TOTAL FEDERAL GRANTS & REIM | 6,781,196.93 | 57,978,749.97 | 6,142,237.92 | -88.30% |
| 4150000000 **OTHER AGENCY REVENUES | | | | | | | | |
| 0.00 | 0.00 | 0.00 | 0.00% | 4150130000 CONTRIBUTED CAPITAL - GOV'T | 0.00 | 0.00 | 0.00 | 0.00% |
| 0.00 | 0.00 | 0.00 | 0.00% | 4150130010 CONTRIBUTED CAPITAL - NON-GOV'T | 0.00 | 0.00 | 9,438.00 | 0.00% |
| 0.00 | 0.00 | 0.00 | 0.00% | 4159999999 ***TOTAL OTHER AGENCY REVENUE | 0.00 | 0.00 | 9,438.00 | 0.00% |
| 5,110,538.79 | 10,991,087.49 | 6,942,733.63 | -53.50% | 4999900099 **** TOTAL REVENUE **** | 43,595,840.24 | 98,919,787.41 | 47,256,830.80 | -55.93% |

Champaign Urbana Mass Transit District

Budget Analysis Report

From Fiscal Year: 2023 From Period 9
 Thru Fiscal Year: 2023 Thru Period 9

Division: 00 Champaign Urbana Mass Transit District

As of: 3/31/2023

| Mar-2023 | Budget This Period | Mar-2022 | Act/Bgt Var % | | Actual Ytd | Jul-2022 thru Mar-2023 Budget Ytd | Last Ytd | Act/Bgt Var % |
|--------------------------------------|-----------------------|---------------------|------------------|---|----------------------|--------------------------------------|----------------------|------------------|
| 5000000000 **** EXPENSES **** | | | | | | | | |
| 5010000000 ** LABOR | | | | | | | | |
| 1,005,389.34 | 916,666.67 | 840,448.12 | 9.68% | 5010101000 OPERATORS WAGES | 8,393,327.90 | 8,250,000.03 | 7,086,680.56 | 1.74% |
| 143,635.45 | 150,000.00 | 133,224.28 | -4.24% | 5010204000 MECHANICS WAGES - MAINT | 1,183,894.99 | 1,350,000.00 | 1,082,128.39 | -12.30% |
| 87,370.81 | 91,666.67 | 82,245.95 | -4.69% | 5010304000 MAINTENANCE WAGES - MAINT | 769,095.92 | 825,000.03 | 618,475.15 | -6.78% |
| 107,084.57 | 133,333.33 | 100,061.30 | -19.69% | 5010401000 SUPERVISORS SALARIES - OPS | 992,483.25 | 1,199,999.97 | 960,138.30 | -17.29% |
| 20,254.45 | 22,083.33 | 21,127.74 | -8.28% | 5010404000 SUPERVISORS SALARIES - MAINT | 193,007.03 | 198,749.97 | 175,943.01 | -2.89% |
| 69,227.03 | 95,833.33 | 84,942.08 | -27.76% | 5010501000 OVERHEAD SALARIES - OPS | 706,064.18 | 862,499.97 | 768,091.35 | -18.14% |
| 37,901.85 | 45,416.67 | 40,443.74 | -16.55% | 5010504000 OVERHEAD SALARIES - MAINT | 382,612.16 | 408,750.03 | 332,307.05 | -6.39% |
| 127,258.15 | 151,416.67 | 117,440.59 | -15.95% | 5010516000 OVERHEAD SALARIES - G&A | 1,362,496.50 | 1,362,750.03 | 1,136,729.19 | -0.02% |
| 31,592.14 | 22,916.67 | 17,350.84 | 37.86% | 5010516200 OVERHEAD SALARIES - IT | 186,044.72 | 206,250.03 | 150,162.02 | -9.80% |
| 15,859.43 | 27,083.33 | 13,943.23 | -41.44% | 5010601000 CLERICAL WAGES - OPS | 148,273.78 | 243,749.97 | 130,656.37 | -39.17% |
| 0.00 | 0.00 | 0.00 | 0.00% | 5010604000 CLERICAL WAGES - MAINT | 0.00 | 0.00 | 0.00 | 0.00% |
| 32,412.24 | 37,500.00 | 32,668.22 | -13.57% | 5010616000 CLERICAL WAGES - G&A | 301,693.08 | 337,500.00 | 310,039.31 | -10.61% |
| 10,316.49 | 11,833.33 | 9,971.62 | -12.82% | 5010616200 CLERICAL WAGES - IT | 96,736.58 | 106,499.97 | 80,862.85 | -9.17% |
| 11,106.79 | 17,500.00 | 10,141.36 | -36.53% | 5010716200 SECURITY WAGES - IT | 129,664.47 | 157,500.00 | 97,638.05 | -17.67% |
| -1,210.98 | 0.00 | -1,210.13 | -100.00% | 5010801000 LABOR CREDIT - OPS | -17,308.93 | 0.00 | -14,265.85 | -100.00% |
| -4,823.93 | 0.00 | -4,881.34 | -100.00% | 5010804000 LABOR CREDIT - MAINT | -38,690.28 | 0.00 | -24,325.99 | -100.00% |
| -1,177.44 | 0.00 | -3,280.08 | -100.00% | 5010806000 LABOR CREDIT - G&A | -11,221.59 | 0.00 | -16,983.48 | -100.00% |
| 12,893.58 | 14,166.67 | 5,842.63 | -8.99% | 5010816200 MAINTENANCE WAGES - IT | 105,531.22 | 127,500.03 | 91,904.14 | -17.23% |
| 0.00 | 0.00 | 0.00 | 0.00% | 5010901000 REDUCED/REASSIGNMNT PAY - OPS | 0.00 | 0.00 | 0.00 | 0.00% |
| 0.00 | 0.00 | 0.00 | 0.00% | 5010904000 REDUCED/REASSIGNMNT PAY - MAI | 0.00 | 0.00 | 0.00 | 0.00% |
| 0.00 | 0.00 | 0.00 | 0.00% | 5010916000 REDUCED/REASSIGNMNT PAY - G&A | 0.00 | 0.00 | 0.00 | 0.00% |
| 0.00 | 0.00 | 0.00 | 0.00% | 5010916200 REDUCED/REASSIGNMNT PAY - IT | 0.00 | 0.00 | 0.00 | 0.00% |
| 0.00 | 0.00 | 0.00 | 0.00% | 5011001000 MEAL DELIVERY WAGES - OPS (NON | 0.00 | 0.00 | 0.00 | 0.00% |
| 0.00 | 0.00 | 0.00 | 0.00% | 5012001000 U OF I COVID ROUTE WAGES | 0.00 | 0.00 | 0.00 | 0.00% |
| 0.00 | 0.00 | 285.54 | 0.00% | 5013001000 COVID VACCINE INCENTIVE WAGES | 0.00 | 0.00 | 25,285.54 | 0.00% |
| 0.00 | 0.00 | 5,363.28 | 0.00% | 5013016000 COVID TESTING WAGES | 0.00 | 0.00 | 13,816.69 | 0.00% |
| 1,705,089.97 | 1,737,416.67 | 1,506,128.97 | -1.86% | 5019999000 ** TOTAL LABOR | 14,883,704.98 | 15,636,750.03 | 13,005,282.65 | -4.82% |
| 5020000000 ** FRINGE BENEFITS | | | | | | | | |
| 97,025.30 | 112,500.00 | 89,721.59 | -13.76% | 5020101000 FICA - OPS | 865,721.05 | 1,012,500.00 | 824,559.39 | -14.50% |
| 23,413.05 | 24,166.67 | 23,760.43 | -3.12% | 5020104000 FICA - MAINT | 215,300.19 | 217,500.03 | 197,405.78 | -1.01% |
| 12,033.10 | 13,333.33 | 10,205.32 | -9.75% | 5020116000 FICA - G&A | 110,971.06 | 119,999.97 | 92,731.30 | -7.52% |
| 6,212.14 | 4,583.33 | 3,669.17 | 35.54% | 5020116200 FICA - IT | 44,045.44 | 41,249.97 | 34,938.04 | 6.78% |
| 154,002.50 | 195,833.33 | 110,235.47 | -21.36% | 5020201000 IMRF - OPS | 1,218,600.81 | 1,762,499.97 | 1,541,704.78 | -30.86% |
| 37,027.86 | 43,750.00 | 27,360.26 | -15.36% | 5020204000 IMRF - MAINT | 366,457.94 | 393,750.00 | 422,429.46 | -6.93% |

Champaign Urbana Mass Transit District Budget Analysis Report

From Fiscal Year: 2023 From Period 9
Thru Fiscal Year: 2023 Thru Period 9

Division: 00 Champaign Urbana Mass Transit District

As of: 3/31/2023

| Mar-2023 | Budget | | Act/Bgt Var % | | Jul-2022 thru Mar-2023 | | | Act/Bgt Var % |
|------------|-------------|------------|------------------|--|------------------------|--------------|--------------|------------------|
| | This Period | Mar-2022 | | | Actual Ytd | Budget Ytd | Last Ytd | |
| 18,764.72 | 19,583.33 | 13,025.92 | -4.18% | 5020216000 IMRF - G&A | 167,304.20 | 176,249.97 | 158,332.14 | -5.08% |
| 7,835.80 | 6,250.00 | 4,920.67 | 25.37% | 5020216200 IMRF - IT | 58,488.24 | 56,250.00 | 52,150.27 | 3.98% |
| 319,434.64 | 333,333.33 | 296,081.64 | -4.17% | 5020301000 MEDICAL INSURANCE - OPS | 2,762,656.71 | 2,999,999.97 | 2,680,486.29 | -7.91% |
| 73,828.08 | 75,000.00 | 71,439.08 | -1.56% | 5020304000 MEDICAL INSURANCE - MAINT | 662,610.95 | 675,000.00 | 632,532.58 | -1.84% |
| 34,502.40 | 40,000.00 | 30,036.20 | -13.74% | 5020316000 MEDICAL INSURANCE - G&A | 349,296.60 | 360,000.00 | 282,712.80 | -2.97% |
| 21,808.00 | 18,750.00 | 15,492.00 | 16.31% | 5020316200 MEDICAL INSURANCE - IT | 175,769.00 | 168,750.00 | 139,428.00 | 4.16% |
| 0.00 | 0.00 | 0.00 | 0.00% | 5020401000 DENTAL INSURANCE - OPS | 0.00 | 0.00 | 0.00 | 0.00% |
| 0.00 | 0.00 | 0.00 | 0.00% | 5020404000 DENTAL INSURANCE - MAINT | 0.00 | 0.00 | 0.00 | 0.00% |
| 0.00 | 0.00 | 0.00 | 0.00% | 5020416000 DENTAL INSURANCE - G&A | 0.00 | 0.00 | 0.00 | 0.00% |
| 1,656.69 | 2,083.33 | 1,684.13 | -20.48% | 5020501000 LIFE INSURANCE - OPS | 13,187.40 | 18,749.97 | 14,032.34 | -29.67% |
| 515.97 | 500.00 | 545.37 | 3.19% | 5020504000 LIFE INSURANCE - MAINT | 4,932.93 | 4,500.00 | 4,348.36 | 9.62% |
| 163.17 | 583.33 | 169.54 | -72.03% | 5020516000 LIFE INSURANCE - G&A | 1,972.50 | 5,249.97 | 4,163.07 | -62.43% |
| 166.60 | 166.67 | 127.40 | -0.04% | 5020516200 LIFE INSURANCE - IT | 1,342.60 | 1,500.03 | 1,058.40 | -10.50% |
| 0.00 | 0.00 | 0.00 | 0.00% | 5020601000 OPEB EXPENSE - OPS | 0.00 | 0.00 | 0.00 | 0.00% |
| 0.00 | 0.00 | 0.00 | 0.00% | 5020604000 OPEB EXPENSE - MAINT | 0.00 | 0.00 | 0.00 | 0.00% |
| 0.00 | 0.00 | 0.00 | 0.00% | 5020616000 OPEB EXPENSE - G&A | 0.00 | 0.00 | 0.00 | 0.00% |
| 0.00 | 0.00 | 0.00 | 0.00% | 5020616200 OPEB EXPENSE - IT | 0.00 | 0.00 | 0.00 | 0.00% |
| 6,793.24 | 4,166.67 | 32,624.36 | 63.04% | 5020701000 UNEMPLOYMENT INSURANCE - OPS | 38,323.66 | 37,500.03 | 41,260.73 | 2.20% |
| 0.00 | 833.33 | 6,899.72 | -100.00% | 5020704000 UNEMPLOYMENT INSURANCE - MAIN | 485.77 | 7,499.97 | 8,560.72 | -93.52% |
| 0.00 | 250.00 | 3,069.49 | -100.00% | 5020716000 UNEMPLOYMENT INSURANCE - G&A | 275.00 | 2,250.00 | 3,717.49 | -87.78% |
| 0.00 | 250.00 | 1,213.15 | -100.00% | 5020716200 UNEMPLOYMENT INSURANCE - IT | 503.89 | 2,250.00 | 2,147.15 | -77.60% |
| 17,008.00 | 15,416.67 | 23,429.69 | 10.32% | 5020801000 WORKERS COMP INSURANCE - OPS | 142,614.63 | 138,750.03 | 140,744.16 | 2.79% |
| 3,571.00 | 10,416.67 | 3,220.00 | -65.72% | 5020804000 WORKERS COMP INSURANCE - MAIN | 29,039.00 | 93,750.03 | 25,502.29 | -69.03% |
| 2,204.00 | 1,666.67 | 1,824.67 | 32.24% | 5020816000 WORKERS COMP INSURANCE - G&A | 15,757.63 | 15,000.03 | 22,128.63 | 5.05% |
| 613.00 | 2,083.33 | 546.00 | -70.58% | 5020816200 WORKERS COMP INSURANCE - IT | 4,741.00 | 18,749.97 | 5,066.85 | -74.71% |
| 1,797.84 | 17,083.33 | 0.00 | -89.48% | 5021001000 HOLIDAYS - OPS | 103,069.36 | 153,749.97 | 95,412.00 | -32.96% |
| 0.00 | 5,416.67 | 0.00 | -100.00% | 5021004000 HOLIDAYS - MAINT | 51,024.88 | 48,750.03 | 34,455.76 | 4.67% |
| 0.00 | 0.00 | 0.00 | 0.00% | 5021016000 HOLIDAYS - G&A | 3,134.09 | 0.00 | 0.00 | 100.00% |
| 0.00 | 833.33 | 0.00 | -100.00% | 5021016200 HOLIDAYS - IT | 13,793.73 | 7,499.97 | 5,743.92 | 83.92% |
| 51,617.96 | 55,000.00 | 40,956.00 | -6.15% | 5021101000 VACATIONS - OPS | 480,901.07 | 495,000.00 | 458,074.72 | -2.85% |
| 9,041.74 | 15,000.00 | 5,618.56 | -39.72% | 5021104000 VACATIONS - MAINT | 119,510.33 | 135,000.00 | 101,064.59 | -11.47% |
| 0.00 | 0.00 | 0.00 | 0.00% | 5021116000 VACATION - G&A | 0.00 | 0.00 | 0.00 | 0.00% |
| 857.20 | 1,666.67 | 2,732.40 | -48.57% | 5021116200 VACATIONS - IT | 15,133.04 | 15,000.03 | 13,147.92 | 0.89% |
| 3,371.79 | 5,416.67 | 3,497.34 | -37.75% | 5021201000 OTHER PAID ABSENCES - OPS | 41,612.71 | 48,750.03 | 41,418.80 | -14.64% |
| 2,024.24 | 1,250.00 | 1,186.96 | 61.94% | 5021204000 OTHER PAID ABSENCES - MAINT | 11,903.70 | 11,250.00 | 6,828.00 | 5.81% |
| 0.00 | 83.33 | 0.00 | -100.00% | 5021216000 OTHER PAID ABSENCES - G&A | 0.00 | 749.97 | 641.28 | -100.00% |
| 1,521.53 | 166.67 | 144.48 | 812.90% | 5021216200 OTHER PAID ABSENCES - IT | 2,847.43 | 1,500.03 | 1,341.11 | 89.82% |
| 575.96 | 5,416.67 | 4,740.76 | -89.37% | 5021301000 UNIFORM ALLOWANCES - OPS | 34,764.54 | 48,750.03 | 49,467.22 | -28.69% |

Champaign Urbana Mass Transit District Budget Analysis Report

From Fiscal Year: 2023 From Period 9
Thru Fiscal Year: 2023 Thru Period 9

Division: 00 Champaign Urbana Mass Transit District

As of: 3/31/2023

| Mar-2023 | Budget This Period | Mar-2022 | Act/Bgt Var % | | Actual Ytd | Jul-2022 thru Mar-2023 Budget Ytd | Last Ytd | Act/Bgt Var % |
|-------------------------------|-----------------------|-------------------|------------------|---|---------------------|--------------------------------------|---------------------|------------------|
| 2,547.07 | 2,250.00 | 453.93 | 13.20% | 5021304000 UNIFORM ALLOWANCES - MAINT | 20,241.48 | 20,250.00 | 8,196.96 | -0.04% |
| -43.99 | 500.00 | 264.62 | -108.80% | 5021316200 UNIFORM ALLOWANCES - IT | 2,223.05 | 4,500.00 | 3,557.11 | -50.60% |
| 0.00 | 416.67 | 0.00 | -100.00% | 5021401000 OTHER FRINGE BENEFITS - OPS | 800.00 | 3,750.03 | 0.00 | -78.67% |
| 0.00 | 833.33 | 130.00 | -100.00% | 5021404000 OTHER FRINGE BENEFITS - MAINT | 632.95 | 7,499.97 | 724.00 | -91.56% |
| 663.00 | 5,000.00 | 620.00 | -86.74% | 5021416000 OTHER FRINGE BENEFITS - G&A | 20,754.85 | 45,000.00 | 32,999.28 | -53.88% |
| 0.00 | 208.33 | 0.00 | -100.00% | 5021416200 OTHER FRINGE BENEFITS - IT | 0.00 | 1,874.97 | 0.00 | -100.00% |
| 48,719.54 | 162,500.00 | 102,802.00 | -70.02% | 5021501000 EARNED TIME - OPS | 711,596.42 | 1,462,500.00 | 1,323,635.44 | -51.34% |
| 9,128.55 | 29,166.67 | 35,602.86 | -68.70% | 5021504000 EARNED TIME - MAINT | 185,988.63 | 262,500.03 | 291,410.55 | -29.15% |
| 2,141.97 | 2,916.67 | 3,121.37 | -26.56% | 5021516200 EARNED TIME - IT | 31,760.51 | 26,250.03 | 26,608.01 | 20.99% |
| 0.00 | 1,500.00 | 0.00 | -100.00% | 5021604000 TOOL ALLOWANCE - MAINT | 0.00 | 13,500.00 | 11,713.91 | -100.00% |
| 3,279.88 | 3,750.00 | 2,529.93 | -12.54% | 5021701000 DISABILITY - OPS | 20,825.07 | 33,750.00 | 20,015.14 | -38.30% |
| 0.00 | 416.67 | 0.00 | -100.00% | 5021704000 DISABILITY - MAINT | 1,669.50 | 3,750.03 | 0.00 | -55.48% |
| 0.00 | 83.33 | 0.00 | -100.00% | 5021716200 DISABILITY - IT | 0.00 | 749.97 | 0.00 | -100.00% |
| 0.00 | 0.00 | 0.00 | 0.00% | 5021801000 WORKERS COMP - PAYROLL - OPS | 0.00 | 0.00 | 3,134.42 | 0.00% |
| 0.00 | 0.00 | 0.00 | 0.00% | 5021804000 WORKERS COMP - PAYROLL - MAINT | 0.00 | 0.00 | 946.24 | 0.00% |
| 0.00 | 0.00 | 0.00 | 0.00% | 5021816200 WORKERS COMP - PAYROLL - IT | 0.00 | 0.00 | 0.00 | 0.00% |
| 0.00 | 0.00 | 0.00 | 0.00% | 5021901000 ROTATION BOARD PAY - OPS | 0.00 | 0.00 | 0.00 | 0.00% |
| 0.00 | 0.00 | 0.00 | 0.00% | 5021904000 ROTATION BOARD PAY - MAINT | 0.00 | 0.00 | 0.00 | 0.00% |
| 0.00 | 0.00 | 0.00 | 0.00% | 5021916000 ROTATION BOARD PAY - G&A | 0.00 | 0.00 | 0.00 | 0.00% |
| 0.00 | 0.00 | 0.00 | 0.00% | 5021916200 ROTATION BOARD PAY - IT | 0.00 | 0.00 | 0.00 | 0.00% |
| 1,229.00 | 16,666.67 | 0.00 | -92.63% | 5022001000 EARLY RETIREMENT PLAN - OPS | 23,575.06 | 150,000.03 | 74,002.00 | -84.28% |
| 0.00 | 2,916.67 | 0.00 | -100.00% | 5022004000 EARLY RETIREMENT PLAN - MAINT | 0.00 | 26,250.03 | 0.00 | -100.00% |
| 0.00 | 2,083.33 | 0.00 | -100.00% | 5022016000 EARLY RETIREMENT PLAN - G&A | 0.00 | 18,749.97 | 0.00 | -100.00% |
| 0.00 | 0.00 | 0.00 | 0.00% | 5022016200 EARLY RETIREMENT PLAN - IT | 0.00 | 0.00 | 0.00 | 0.00% |
| 0.00 | 0.00 | 0.00 | 0.00% | 5023001000 "SICK BANK" EXPENSES - OPS | 0.00 | 0.00 | 55,693.98 | 0.00% |
| 0.00 | 0.00 | 0.00 | 0.00% | 5023004000 "SICK BANK" EXPENSES - MAINT | 0.00 | 0.00 | 6,040.28 | 0.00% |
| 0.00 | 0.00 | 0.00 | 0.00% | 5023016000 "SICK BANK" EXPENSES - G&A | 0.00 | 0.00 | 0.00 | 0.00% |
| 0.00 | 0.00 | 0.00 | 0.00% | 5023016200 "SICK BANK" EXPENSES - IT | 0.00 | 0.00 | 954.16 | 0.00% |
| 977,052.54 | 1,264,041.67 | 975,702.48 | -22.70% | 5029999900 ** TOTAL FRINGE BENEFITS | 9,148,160.60 | 11,376,375.03 | 9,999,367.82 | -19.59% |
| 5030000000 ** SERVICES | | | | | | | | |
| 27,116.76 | 68,750.00 | 24,962.17 | -60.56% | 5030316000 PROFESSIONAL SERVICES - G&A | 345,125.34 | 618,750.00 | 379,545.43 | -44.22% |
| 1,761.32 | 208.33 | 0.00 | 745.45% | 5030316200 PROFESSIONAL SERVICES - IT | 7,079.27 | 1,874.97 | 115.22 | 277.57% |
| 0.00 | 833.33 | 0.00 | -100.00% | 5030316300 PROFESSIONAL SERVICES - IT - NON | 0.00 | 7,499.97 | 11,186.58 | -100.00% |
| 5,914.00 | 16,666.67 | 9,238.00 | -64.52% | 5030316400 PROFESSIONAL SERVICES - G&A - N | 69,167.00 | 150,000.03 | 65,328.00 | -53.89% |
| 0.00 | 0.00 | 0.00 | 0.00% | 5030404000 TEMPORARY HELP - MAINT | 0.00 | 0.00 | 0.00 | 0.00% |
| 0.00 | 4,166.67 | 0.00 | -100.00% | 5030416000 TEMPORARY HELP - G&A | 0.00 | 37,500.03 | 0.00 | -100.00% |
| 3,407.37 | 6,666.67 | 412.36 | -48.89% | 5030501000 CONTRACT MAINTENANCE - OPS | 35,906.78 | 60,000.03 | -22,967.80 | -40.16% |

Champaign Urbana Mass Transit District

Budget Analysis Report

From Fiscal Year: 2023 From Period 9
 Thru Fiscal Year: 2023 Thru Period 9

Division: 00 Champaign Urbana Mass Transit District

As of: 3/31/2023

| Mar-2023 | Budget This Period | Mar-2022 | Act/Bgt Var % | | Actual Ytd | Jul-2022 thru Mar-2023 Budget Ytd | Last Ytd | Act/Bgt Var % |
|--|-----------------------|------------------|------------------|--|---------------------|--------------------------------------|---------------------|------------------|
| 36,561.29 | 13,333.33 | 9,847.89 | 174.21% | 5030504000 CONTRACT MAINTENANCE - MAINT | 127,704.88 | 119,999.97 | 113,311.58 | 6.42% |
| 30,587.47 | 50,833.33 | 18,879.87 | -39.83% | 5030516000 CONTRACT MAINTENANCE - G&A | 394,703.01 | 457,499.97 | 334,296.03 | -13.73% |
| 751.04 | 2,916.67 | 3,574.23 | -74.25% | 5030516200 CONTRACT MAINTENANCE - IT | 7,898.01 | 26,250.03 | 16,249.09 | -69.91% |
| 0.00 | 0.00 | 0.00 | 0.00% | 5030516300 CONTRACT MAINTENANCE - IT - NON | 154.22 | 0.00 | 0.00 | 100.00% |
| 0.00 | 0.00 | 0.00 | 0.00% | 5030604000 CUSTODIAL SERVICES - MAINT | 0.00 | 0.00 | 0.00 | 0.00% |
| 0.00 | 3,750.00 | 0.00 | -100.00% | 5030801000 PRINTING SERVICES - OPS | 24,480.42 | 33,750.00 | 894.06 | -27.47% |
| 0.00 | 83.33 | 0.00 | -100.00% | 5030804000 PRINTING SERVICES - MAINT | 0.00 | 749.97 | 0.00 | -100.00% |
| 0.00 | 416.67 | 0.00 | -100.00% | 5030816000 PRINTING SERVICES - G&A | 794.00 | 3,750.03 | 46,546.14 | -78.83% |
| 0.00 | 83.33 | 0.00 | -100.00% | 5030816200 PRINTING SERVICES - IT | 0.00 | 749.97 | 0.00 | -100.00% |
| 0.00 | 0.00 | 0.00 | 0.00% | 5030816300 PRINTING SERVICES - IT - NON-REIM | 0.00 | 0.00 | 0.00 | 0.00% |
| 1,042.00 | 8,333.33 | 1,974.00 | -87.50% | 5031216000 CABS | 16,313.00 | 74,999.97 | 16,127.00 | -78.25% |
| 5,133.79 | 3,750.00 | 5,562.48 | 36.90% | 5039901000 OTHER SERVICES - OPS | 51,230.22 | 33,750.00 | 30,412.98 | 51.79% |
| 562.78 | 1,250.00 | 957.10 | -54.98% | 5039904000 OTHER SERVICES - MAINT | 6,566.76 | 11,250.00 | 10,429.93 | -41.63% |
| 1,526.15 | 8,333.33 | 7,048.38 | -81.69% | 5039916000 OTHER SERVICES - G&A | 21,000.51 | 74,999.97 | 21,294.58 | -72.00% |
| 43.06 | 333.33 | 91.56 | -87.08% | 5039916200 OTHER SERVICES - IT | 780.57 | 2,999.97 | 678.90 | -73.98% |
| 0.00 | 0.00 | 0.00 | 0.00% | 5039916300 OTHER SERVICES - IT - NON-REIMB | 0.00 | 0.00 | 0.00 | 0.00% |
| 0.00 | 0.00 | 0.00 | 0.00% | 5039916400 OTHER SERVICES - G&A - NON-REIM | 0.00 | 0.00 | 1,570.27 | 0.00% |
| 114,407.03 | 190,708.32 | 82,548.04 | -40.01% | 5039999900 ** TOTAL SERVICES | 1,108,903.99 | 1,716,374.88 | 1,025,017.99 | -35.39% |
| 5040000000 ** MATERIALS & SUPPLIES CONSUM | | | | | | | | |
| 151,803.18 | 229,166.67 | 166,988.66 | -33.76% | 5040101000 FUEL & LUBRICANTS - OPS | 1,584,570.67 | 2,062,500.03 | 1,184,943.75 | -23.17% |
| 15,211.10 | 14,583.33 | 16,476.95 | 4.30% | 5040104000 FUEL & LUBRICANTS - MAINT | 155,870.86 | 131,249.97 | 119,283.31 | 18.76% |
| 14,012.77 | 13,750.00 | 11,599.37 | 1.91% | 5040201000 TIRES & TUBES - OPS - MB DO | 119,463.51 | 123,750.00 | 112,409.11 | -3.46% |
| 258.89 | 916.67 | 2,644.58 | -71.76% | 5040204000 TIRES & TUBES - MAINT - DR DO | 9,348.42 | 8,250.03 | 7,415.26 | 13.31% |
| 0.00 | 0.00 | 0.00 | 0.00% | 5040206000 TIRES & TUBES - NON-REVENUE VEH | 343.78 | 0.00 | 0.00 | 100.00% |
| 1,829.19 | 4,166.67 | 3,858.64 | -56.10% | 5040304000 GARAGE EQUIPMENT REPAIRS - MAI | 10,442.40 | 37,500.03 | 24,603.94 | -72.15% |
| 32,583.08 | 14,583.33 | 12,880.86 | 123.43% | 5040404000 BLDG & GROUND REPAIRS - MAINT - | 219,995.21 | 131,249.97 | 128,144.76 | 67.62% |
| 18,450.11 | 4,166.67 | 478.50 | 342.80% | 5040404001 BLDG & GROUND REPAIRS - MAINT - | 52,687.02 | 37,500.03 | 10,851.63 | 40.50% |
| 45.77 | 83.33 | 0.00 | -45.07% | 5040404002 BLDG & GROUND REPAIRS - MAINT - | 1,459.52 | 749.97 | 0.00 | 94.61% |
| 13,165.25 | 10,833.33 | 908.00 | 21.53% | 5040416200 BLDG & GROUND REPAIRS - IT | 78,537.03 | 97,499.97 | 31,464.15 | -19.45% |
| 0.00 | 1,250.00 | 925.00 | -100.00% | 5040416300 BLDG & GROUND REPAIRS - IT - NON | 15,710.46 | 11,250.00 | 12,791.78 | 39.65% |
| 1,228.91 | 416.67 | 2,302.12 | 194.94% | 5040416400 BLDG & GROUND REPAIRS - G&A - N | 2,250.37 | 3,750.03 | 7,918.33 | -39.99% |
| -2,915.85 | 0.00 | 0.00 | -100.00% | 5040500001 REVENUE VEHICLE REPAIRS - CORE | -4,095.57 | 0.00 | -14.30 | -100.00% |
| 146,410.99 | 200,000.00 | 124,727.71 | -26.79% | 5040504000 REVENUE VEHICLE REPAIRS | 1,132,235.82 | 1,800,000.00 | 1,229,735.25 | -37.10% |
| 6,215.67 | 2,083.33 | 4,947.14 | 198.35% | 5040604000 NON-REVENUE VEHICLE REPAIRS | 72,217.30 | 18,749.97 | 18,789.06 | 285.16% |
| 8,290.43 | 8,333.33 | 17,588.63 | -0.51% | 5040704000 SERVICE SUPPLIES - MAINT | 83,080.48 | 74,999.97 | 89,743.63 | 10.77% |
| 1,788.99 | 2,333.33 | 441.18 | -23.33% | 5040716200 SERVICE SUPPLIES - IT | 18,221.53 | 20,999.97 | 14,216.00 | -13.23% |
| 3,376.72 | 3,750.00 | 2,535.65 | -9.95% | 5040801000 OFFICE SUPPLIES - OPS | 18,605.43 | 33,750.00 | 34,345.96 | -44.87% |

Champaign Urbana Mass Transit District Budget Analysis Report

From Fiscal Year: 2023 From Period 9
Thru Fiscal Year: 2023 Thru Period 9

Division: 00 Champaign Urbana Mass Transit District

As of: 3/31/2023

| Mar-2023 | Budget | | Act/Bgt Var % | | Jul-2022 thru Mar-2023 | | | Act/Bgt Var % |
|---|-------------------|-------------------|------------------|---|------------------------|---------------------|---------------------|------------------|
| | This Period | Mar-2022 | | | Actual Ytd | Budget Ytd | Last Ytd | |
| 1,449.80 | 1,416.67 | 743.44 | 2.34% | 5040804000 OFFICE SUPPLIES - MAINT | 12,391.79 | 12,750.03 | 12,064.12 | -2.81% |
| 4,285.00 | 1,333.33 | -1,126.45 | 221.38% | 5040816000 OFFICE SUPPLIES - G&A | 9,274.87 | 11,999.97 | 9,948.32 | -22.71% |
| 408.87 | 416.67 | 128.97 | -1.87% | 5040816200 OFFICE SUPPLIES - IT | 2,039.54 | 3,750.03 | 838.94 | -45.61% |
| 5,841.40 | 1,666.67 | 0.00 | 250.48% | 5040901000 COMPUTER & SERVER - MISC EXP'S | 8,710.26 | 15,000.03 | 1,820.17 | -41.93% |
| 1,128.73 | 1,666.67 | 0.00 | -32.28% | 5040904000 COMPUTER & SERVER - MISC EXP'S | 2,130.44 | 15,000.03 | 15,617.90 | -85.80% |
| 8,419.36 | 7,500.00 | 12,246.02 | 12.26% | 5040916000 COMPUTER & SERVER - MISC EXP'S | 148,836.15 | 67,500.00 | 63,602.62 | 120.50% |
| 0.00 | 416.67 | 0.00 | -100.00% | 5040916200 COMPUTER & SERVER - MISC EXP'S | 490.64 | 3,750.03 | 2,405.79 | -86.92% |
| 86.20 | 833.33 | 167.45 | -89.66% | 5041001000 SAFETY & TRAINING - OPS | 3,782.82 | 7,499.97 | 2,031.01 | -49.56% |
| 0.00 | 833.33 | 0.00 | -100.00% | 5041004000 SAFETY & TRAINING - MAINT | 2,191.61 | 7,499.97 | 88.34 | -70.78% |
| 1,332.56 | 7,083.33 | 12,534.78 | -81.19% | 5041104000 PASSENGER SHELTER REPAIRS | 61,889.56 | 63,749.97 | 61,177.79 | -2.92% |
| 0.00 | 833.33 | -75.62 | -100.00% | 5041201000 SMALL TOOLS & EQUIP - OPS | 359.38 | 7,499.97 | 22,497.48 | -95.21% |
| 19,635.40 | 5,416.67 | 257.07 | 262.50% | 5041204000 SMALL TOOLS & EQUIP - MAINT | 40,036.45 | 48,750.03 | 18,119.00 | -17.87% |
| 0.00 | 6,250.00 | 0.00 | -100.00% | 5041216000 SMALL TOOLS & EQUIP - G&A | 725.90 | 56,250.00 | 0.00 | -98.71% |
| 115.00 | 833.33 | 0.00 | -86.20% | 5041216200 SMALL TOOLS & EQUIP - IT | 736.85 | 7,499.97 | 5,526.21 | -90.18% |
| 1,599.00 | 0.00 | 0.00 | 100.00% | 5041216300 SMALL TOOLS & EQUIP - IT - NON-RE | 1,724.94 | 0.00 | 29.94 | 100.00% |
| 0.00 | 0.00 | 0.00 | 0.00% | 5041216400 SMALL TOOLS & EQUIP - G&A - NON- | 0.00 | 0.00 | 0.00 | 0.00% |
| 0.00 | 83.33 | 0.00 | -100.00% | 5041304000 FAREBOX REPAIRS | 961.36 | 749.97 | 0.00 | 28.19% |
| 484.95 | 5,416.67 | 53.96 | -91.05% | 5041404000 CAD/AVL,CAMERA,RADIO REPAIRS - | 84,755.47 | 48,750.03 | 40,169.91 | 73.86% |
| 2,560.72 | 1,250.00 | 4,086.31 | 104.86% | 5041504000 ADA VEHICLE REPAIRS - MAINT | 26,801.04 | 11,250.00 | 13,789.33 | 138.23% |
| 459,102.19 | 553,666.66 | 398,318.92 | -17.08% | 5049999900 ** TOTAL MATERIAL & SUPPLIES | 3,978,783.31 | 4,982,999.94 | 3,296,368.49 | -20.15% |
| 5050000000 **UTILITIES | | | | | | | | |
| 105,676.75 | 75,000.00 | 51,193.20 | 40.90% | 5050216000 ** UTILITIES - G&A | 738,668.61 | 675,000.00 | 503,790.44 | 9.43% |
| 11,763.11 | 12,500.00 | 3,978.05 | -5.90% | 5050216200 ** UTILITIES - IT | 115,331.13 | 112,500.00 | 84,709.33 | 2.52% |
| 4,126.69 | 5,416.67 | 570.87 | -23.82% | 5050216300 ** UTILITIES - IT - NON-REIMB | 50,443.64 | 48,750.03 | 35,871.16 | 3.47% |
| 5,556.14 | 416.67 | 460.95 | > 999.99% | 5050216400 ** UTILITIES - G&A - NON-REIMB | 39,870.60 | 3,750.03 | 2,679.35 | 963.21% |
| 127,122.69 | 93,333.34 | 56,203.07 | 36.20% | 5059999900 **TOTAL UTILITIES | 944,313.98 | 840,000.06 | 627,050.28 | 12.42% |
| 5060000000 ** CASUALTY & LIABILITY COSTS | | | | | | | | |
| 7,984.86 | 7,916.67 | 7,429.28 | 0.86% | 5060104000 PHYSICAL DAMAGE PREMIUMS - MAI | 72,186.74 | 71,250.03 | 66,863.52 | 1.31% |
| 0.00 | 0.00 | 0.00 | 0.00% | 5060116200 PHYSICAL DAMAGE PREMIUMS - IT | 0.00 | 0.00 | 0.00 | 0.00% |
| -745.97 | -2,916.67 | -1,809.25 | -74.42% | 5060204000 PHYSICAL DAMAGE RECOVERIES - M | -27,945.65 | -26,250.03 | -22,600.19 | 6.46% |
| 39,636.12 | 50,000.00 | 33,626.26 | -20.73% | 5060316000 PL & PD INSURANCE PREMIUMS - G& | 364,751.08 | 450,000.00 | 303,655.34 | -18.94% |
| 0.00 | 0.00 | 0.00 | 0.00% | 5060316200 PL & PD INSURANCE PREMIUMS - IT | 0.00 | 0.00 | 0.00 | 0.00% |
| 30,042.31 | 50,000.00 | 29,345.64 | -39.92% | 5060416000 UNINSURED PL & PD PAYOUTS - G&A | 264,995.19 | 450,000.00 | 258,703.81 | -41.11% |
| 3,766.98 | 4,166.67 | 3,710.65 | -9.59% | 5060816000 PREMIUMS-OTHER COPORATE INS. | 34,985.82 | 37,500.03 | 33,395.85 | -6.70% |
| 80,684.30 | 109,166.67 | 72,302.58 | -26.09% | 5069999900 ** TOTAL CASUALTY & LIABILITY | 708,973.18 | 982,500.03 | 640,018.33 | -27.84% |

Champaign Urbana Mass Transit District Budget Analysis Report

From Fiscal Year: 2023 From Period 9
Thru Fiscal Year: 2023 Thru Period 9

Division: 00 Champaign Urbana Mass Transit District

As of: 3/31/2023

| Mar-2023 | Budget This Period | Mar-2022 | Act/Bgt Var % | | Actual Ytd | Jul-2022 thru Mar-2023 Budget Ytd | Last Ytd | Act/Bgt Var % |
|---|-----------------------|------------------|------------------|---|-------------------|--------------------------------------|-------------------|------------------|
| 5070000000 ** TAXES | | | | | | | | |
| 0.00 | 416.67 | 0.00 | -100.00% | 5070316000 PROPERTY TAXES | 0.00 | 3,750.03 | 10,500.00 | -100.00% |
| 312.50 | 333.33 | 312.50 | -6.25% | 5070316400 PROPERTY TAXES - NON-REIMB | 2,812.50 | 2,999.97 | 2,812.50 | -6.25% |
| 489.00 | 250.00 | 234.00 | 95.60% | 5070401000 VEHICLE LICENSING FEES - OPS | 512.00 | 2,250.00 | 1,588.00 | -77.24% |
| 0.00 | 0.00 | 0.00 | 0.00% | 5070416000 VEHICLE LICENSING FEES - G&A | 0.00 | 0.00 | 0.00 | 0.00% |
| 2,609.49 | 3,333.33 | 4,891.64 | -21.72% | 5070501000 FUEL TAX | 22,547.77 | 29,999.97 | 22,954.09 | -24.84% |
| 3,410.99 | 4,333.33 | 5,438.14 | -21.28% | 5079999900 ** TOTAL TAXES | 25,872.27 | 38,999.97 | 37,854.59 | -33.66% |
| 5080100000 ** PURCHASED TRANSPORTATION | | | | | | | | |
| 0.00 | 0.00 | 0.00 | 0.00% | 5080116000 CABS (Closed - See GL 5031216000) | 0.00 | 0.00 | 0.00 | 0.00% |
| 76,805.83 | 77,500.00 | 72,988.83 | -0.90% | 5080216000 ADA CONTRACTS | 691,255.47 | 697,500.00 | 656,904.47 | -0.90% |
| 76,805.83 | 77,500.00 | 72,988.83 | -0.90% | 5089999900 **TOTAL PURCHASED TRANSPORTA | 691,255.47 | 697,500.00 | 656,904.47 | -0.90% |
| 5090000000 ** MISCELLANEOUS EXPENSES | | | | | | | | |
| 6,447.16 | 9,166.67 | 2,958.33 | -29.67% | 5090116000 DUES & SUBSCRIPTIONS - G&A | 87,679.69 | 82,500.03 | 68,747.43 | 6.28% |
| 9,293.58 | 10,416.67 | 1,591.69 | -10.78% | 5090216000 TRAVEL & MEETINGS - G&A | 93,253.29 | 93,750.03 | 115,660.45 | -0.53% |
| 0.00 | 0.00 | 0.00 | 0.00% | 5090716000 BAD DEBT EXPENSE | 0.00 | 0.00 | 0.00 | 0.00% |
| 6,520.86 | 16,666.67 | 4,356.22 | -60.87% | 5090816000 ADVERTISING EXPENSES - G&A | 108,165.00 | 150,000.03 | 102,929.95 | -27.89% |
| 0.00 | 0.00 | -280.00 | 0.00% | 5090816200 ADVERTISING EXPENSES - IT | 0.00 | 0.00 | 0.00 | 0.00% |
| 0.00 | 666.67 | 0.00 | -100.00% | 5090916000 TRUSTEE COMPENSATION | 4,750.00 | 6,000.03 | 2,950.00 | -20.83% |
| 168.43 | 583.33 | 146.31 | -71.13% | 5091016000 POSTAGE | 4,567.31 | 5,249.97 | 4,430.58 | -13.00% |
| 0.00 | 0.00 | 0.00 | 0.00% | 5091516000 LOSS/DISPOSAL FIXED ASSETS | 0.00 | 0.00 | 0.00 | 0.00% |
| 2,803.00 | 8,333.33 | 1,018.50 | -66.36% | 5091616000 ADVERTISING SERVICES EXPENSE | 41,322.65 | 74,999.97 | 52,295.25 | -44.90% |
| 0.00 | 0.00 | 0.00 | 0.00% | 5091716000 SUBSTANCE ABUSE PROGRAM | 0.00 | 0.00 | 0.00 | 0.00% |
| 0.00 | 1,666.67 | 1,652.50 | -100.00% | 5099901000 OTHER MISC EXPENSES - OPS | 3,544.32 | 15,000.03 | 2,710.53 | -76.37% |
| 210.59 | 1,666.67 | 0.00 | -87.36% | 5099904000 OTHER MISC EXPENSES - MAINT | 11,309.30 | 15,000.03 | 4,798.88 | -24.60% |
| 4,307.13 | 8,333.33 | 2,639.64 | -48.31% | 5099916000 OTHER MISC EXPENSES - G&A | 40,591.01 | 74,999.97 | 39,517.91 | -45.88% |
| 1,042.49 | 1,250.00 | 926.89 | -16.60% | 5099916200 OTHER MISC EXPENSES - IT | 10,377.54 | 11,250.00 | 7,492.56 | -7.76% |
| 0.00 | 83.33 | 0.00 | -100.00% | 5099916300 OTHER MISC EXPENSES - IT - NON-R | 0.00 | 749.97 | 2,109.20 | -100.00% |
| 404.99 | 2,083.33 | 1,744.25 | -80.56% | 5099916400 OTHER MISC EXPENSES - G&A - NON | 33,832.04 | 18,749.97 | 82,784.89 | 80.44% |
| -3,198.61 | 0.00 | 3,530.11 | -100.00% | 5099926000 UNALLOCATED EXPENSES | 17,068.78 | 0.00 | 29,543.51 | 100.00% |
| 27,999.62 | 60,916.67 | 20,284.44 | -54.04% | 5099999900 ** TOTAL MISCELLANEOUS EXPENS | 456,460.93 | 548,250.03 | 515,971.14 | -16.74% |
| 5110000000 ** INTEREST EXPENSES | | | | | | | | |

Champaign Urbana Mass Transit District Budget Analysis Report

From Fiscal Year: 2023 From Period 9
Thru Fiscal Year: 2023 Thru Period 9

Division: 00 Champaign Urbana Mass Transit District

As of: 3/31/2023

| Mar-2023 | Budget This Period | Mar-2022 | Act/Bgt Var % | | Actual Ytd | Jul-2022 thru Mar-2023 Budget Ytd | Last Ytd | Act/Bgt Var % |
|--|-----------------------|---------------------|------------------|--|----------------------|--------------------------------------|----------------------|------------------|
| 0.00 | 0.00 | 0.00 | 0.00% | 5110116000 INTEREST - LONG-TERM DEBTS | 0.00 | 0.00 | 0.00 | 0.00% |
| 285.55 | 4,166.67 | 2,518.76 | -93.15% | 5110216000 INTEREST - SHORT-TERM DEBTS | 1,178.44 | 37,500.03 | 56,149.09 | -96.86% |
| 285.55 | 4,166.67 | 2,518.76 | -93.15% | 5119999900 ** TOTAL INTEREST | 1,178.44 | 37,500.03 | 56,149.09 | -96.86% |
| 5120000000 ** LEASE & RENTALS | | | | | | | | |
| 12,240.35 | 12,500.00 | 3,164.70 | -2.08% | 5120401000 PASSENGER REVENUE VEHICLES - | 102,888.48 | 112,500.00 | 28,482.30 | -8.54% |
| 4,031.42 | 4,166.67 | 706.04 | -3.25% | 5120516000 SERVICE VEHICLE LEASES | 9,679.74 | 37,500.03 | 6,354.36 | -74.19% |
| 0.00 | 8,333.33 | 805.99 | -100.00% | 5120704000 GARAGE EQUIPMENT LEASES - MAIN | 0.00 | 74,999.97 | 7,253.91 | -100.00% |
| 0.00 | 0.00 | 0.00 | 0.00% | 5120901000 RADIO EQUIPMENT LEASES - OPS | 0.00 | 0.00 | 0.00 | 0.00% |
| 12,638.93 | 12,500.00 | 15,552.32 | 1.11% | 5121216000 G&A FACILITIES LEASES | 116,663.76 | 112,500.00 | 139,970.88 | 3.70% |
| 83.30 | 18,750.00 | 81.44 | -99.56% | 5121301000 MISC LEASES - OPS | 3,837.09 | 168,750.00 | 64,593.33 | -97.73% |
| 17,678.89 | 18,750.00 | 15,237.72 | -5.71% | 5121304000 MISC LEASES - MAINT | 126,828.27 | 168,750.00 | 103,100.75 | -24.84% |
| 1,332.77 | 3,333.33 | 1,303.00 | -60.02% | 5121316000 MISC LEASES - G&A | 11,994.93 | 29,999.97 | 10,307.81 | -60.02% |
| 66.63 | 1,250.00 | 65.16 | -94.67% | 5121316200 MISC LEASES - IT | 599.67 | 11,250.00 | 305.09 | -94.67% |
| 0.00 | 0.00 | 0.00 | 0.00% | 5121316300 MISC LEASES - IT - NON-REIMB | 0.00 | 0.00 | 2,100.00 | 0.00% |
| 0.00 | 83.33 | 0.00 | -100.00% | 5121316400 MISC LEASES - G&A - NON-REIMB | 2,100.00 | 749.97 | -612.50 | 180.01% |
| 48,072.29 | 79,666.66 | 36,916.37 | -39.66% | 5129999900 ** TOTAL LEASE & RENTALS | 374,591.94 | 716,999.94 | 361,855.93 | -47.76% |
| 5130000000 ** DEPRECIATION | | | | | | | | |
| 22,861.78 | 0.00 | 23,532.26 | 100.00% | 5130201000 PASSENGER SHELTER DEPRECIATI | 207,407.29 | 0.00 | 212,115.85 | 100.00% |
| 459,870.10 | 0.00 | 475,655.87 | 100.00% | 5130401000 REVENUE VEHICLE DEPRECIATION | 4,327,897.12 | 0.00 | 4,003,472.31 | 100.00% |
| 6,028.69 | 0.00 | 7,039.02 | 100.00% | 5130516000 SERVICE VEHICLE DEPRECIATION | 56,453.10 | 0.00 | 63,351.17 | 100.00% |
| 5,904.06 | 0.00 | 5,904.07 | 100.00% | 5130704000 GARAGE EQUIP DEPRECIATION | 53,136.54 | 0.00 | 53,136.51 | 100.00% |
| 1,469.50 | 0.00 | 926.67 | 100.00% | 5130901000 REVENUE VEHICLE RADIO EQUIP DE | 13,225.50 | 0.00 | 30,704.02 | 100.00% |
| 6,328.80 | 0.00 | 7,959.78 | 100.00% | 5131016000 COMPUTER EQUIP DEPRECIATION | 56,959.09 | 0.00 | 74,072.96 | 100.00% |
| 0.00 | 0.00 | 0.00 | 0.00% | 5131116000 REVENUE COLLECTION EQUIP DEPR | 0.00 | 0.00 | 0.00 | 0.00% |
| 138,987.27 | 0.00 | 140,513.86 | 100.00% | 5131216000 G&A FACILITIES DEPRECIATION | 1,250,885.25 | 0.00 | 1,266,264.14 | 100.00% |
| 3,121.70 | 0.00 | 3,121.70 | 100.00% | 5131316000 G&A SYSTEM DEVELOPMENT DEPR | 28,095.30 | 0.00 | 28,095.30 | 100.00% |
| 253.57 | 0.00 | 253.57 | 100.00% | 5131416000 MISCELLANEOUS EQUIP DEPR | 2,282.13 | 0.00 | 2,282.12 | 100.00% |
| 0.00 | 0.00 | 0.00 | 0.00% | 5131516000 OFFICE EQUIP DEPRECIATION | 0.00 | 0.00 | 0.00 | 0.00% |
| 644,825.47 | 0.00 | 664,906.80 | 100.00% | 5139999900 ** TOTAL DEPRECIATION | 5,996,341.32 | 0.00 | 5,733,494.38 | 100.00% |
| 0.00 | 0.00 | 0.00 | 0.00% | 5170116000 DEBT SERVICE ON EQUIPMENT & FA | 0.00 | 0.00 | 0.00 | 0.00% |
| 4,264,858.47 | 4,174,916.66 | 3,894,257.40 | 2.15% | 5999990000 **** TOTAL EXPENSES **** | 38,318,540.41 | 37,574,249.94 | 35,955,335.16 | 1.98% |

Champaign Urbana Mass Transit District Budget Analysis Report

From Fiscal Year: 2023 From Period 9
Thru Fiscal Year: 2023 Thru Period 9

Division: 00 Champaign Urbana Mass Transit District

As of: 3/31/2023

| Mar-2023 | Budget This Period | Mar-2022 | Act/Bgt Var % | | Actual Ytd | Jul-2022 thru Mar-2023 Budget Ytd | Last Ytd | Act/Bgt Var % |
|------------|-----------------------|--------------|------------------|----------------------------------|--------------|--------------------------------------|---------------|------------------|
| 845,680.32 | 6,816,170.83 | 3,048,476.23 | -87.59% | 5999999800 NET SURPLUS (DEFICIT) | 5,277,299.83 | 61,345,537.47 | 11,301,495.64 | -91.40% |

Champaign-Urbana Mass Transit District
Accounts Payable Check Disbursement List
 BUSEY BANK OPERATING ACCOUNT

From Date: 3/1/2023

Thru Date: 3/31/2023

| CheckNo | ReferenceDate | Reference | Payee | CheckAmount | C-CARTS Portion | MTD Portion | Voided |
|---------|---------------|-----------|--------------------------------------|-------------|--------------------|----------------|--------|
| 159054 | 02-Mar-23 | A1933 | ADVANCED COMMERCIAL ROOFING | \$774.93 | | \$774.93 | |
| 159055 | 02-Mar-23 | A5085 | AMERENIP | \$634.22 | | \$634.22 | |
| 159056 | 02-Mar-23 | A7545 | ILLINI GLASS SOLUTIONS | \$333.10 | | \$333.10 | |
| 159057 | 02-Mar-23 | A8006 | AT & T MOBILITY LLC | \$180.78 | | \$180.78 | |
| 159058 | 02-Mar-23 | A8007 | AT & T | \$1,352.43 | | \$1,352.43 | |
| 159059 | 02-Mar-23 | A8011 | AT&T MOBILITY-CC | \$2,586.44 | | \$2,586.44 | |
| 159060 | 02-Mar-23 | A85755 | AUTOMOTIVE COLOR & SUPPLY CORP | \$274.75 | | \$274.75 | |
| 159061 | 02-Mar-23 | B0240 | BALLARD POWER SYSTEMS INC. | \$1,545.80 | | \$1,545.80 | |
| 159062 | 02-Mar-23 | B2005 | VICTORIA BEACH | \$950.00 | | \$950.00 | |
| 159063 | 02-Mar-23 | B2227 | BERG TANKS | \$270.00 | | \$270.00 | |
| 159064 | 02-Mar-23 | B3555 | BIRKEY'S FARM STORE, INC. | \$797.28 | | \$797.28 | |
| 159065 | 02-Mar-23 | C6258 | COLUMBIA STREET ROASTERY | \$425.10 | | \$425.10 | |
| 159066 | 02-Mar-23 | C6259 | COMMERCE BANK CREDIT CARD | \$9,900.26 | | \$9,900.26 | |
| 159067 | 02-Mar-23 | C7290 | KEIFER CRAMER | \$135.31 | | \$135.31 | |
| 159068 | 02-Mar-23 | C8450 | CU HARDWARE COMPANY | \$62.35 | | \$62.35 | |
| 159069 | 02-Mar-23 | C8500 | CUMMINS INC. | \$1,499.46 | | \$1,499.46 | |
| 159070 | 02-Mar-23 | D0426 | DAVIS-HOUK MECHANICAL, INC | \$3,147.86 | | \$3,147.86 | |
| 159071 | 02-Mar-23 | D3575 | DIRECT ENERGY BUSINESS | \$9,513.72 | | \$9,513.72 | |
| 159072 | 02-Mar-23 | D7700 | DS SERVICES OF AMERICA, INC. | \$9.00 | | \$9.00 | |
| 159073 | 02-Mar-23 | D8520 | DUNCAN SUPPLY CO. INC. | \$126.96 | | \$126.96 | |
| 159074 | 02-Mar-23 | F2014 | F.E. MORAN, INC. FIRE PROTECTION | \$1,293.75 | | \$1,293.75 | |
| 159075 | 02-Mar-23 | F6367 | FORD CITY | \$761.89 | | \$761.89 | |
| 159076 | 02-Mar-23 | G2287 | GFL ENVIRONMENTAL HOLDINGS (US), INC | \$1,329.00 | | \$1,329.00 | |
| 159077 | 02-Mar-23 | G3102 | GHR ENGINEERS & ASSOCIATES, INC. | \$0.00 | | \$0.00 | X |
| 159078 | 02-Mar-23 | G4290 | GLOBAL INDUSTRIAL | \$227.50 | | \$227.50 | |
| 159079 | 02-Mar-23 | G6300 | GOODYEAR TIRE & RUBBER CO | \$13,875.48 | | \$13,875.48 | |
| 159080 | 02-Mar-23 | G7308 | GRAINGER | \$2,391.13 | | \$2,391.13 | |
| 159081 | 02-Mar-23 | G73301 | GRAYBAR ELECTRIC COMPANY | \$90.20 | | \$90.20 | |
| 159082 | 02-Mar-23 | I4747 | ILLINI FS, INC. | \$52,128.43 | | \$52,128.43 | |
| 159083 | 02-Mar-23 | I4790 | ILLINOIS-AMERICAN WATER | \$367.16 | | \$367.16 | |
| 159084 | 02-Mar-23 | I8235 | I3 BROADBAND - CU | \$654.99 | | \$654.99 | |
| 159085 | 02-Mar-23 | J0320 | JANITOR & MAINTENANCE SUPPLIES, INC. | \$395.07 | | \$395.07 | |
| 159086 | 02-Mar-23 | K2000 | KECdesign | \$560.80 | | \$560.80 | |
| 159087 | 02-Mar-23 | K8564 | KURLAND STEEL COMPANY | \$150.00 | | \$150.00 | |
| 159088 | 02-Mar-23 | M1090 | MCCORMICK DISTRIBUTION & SERVICE | \$153.00 | | \$153.00 | |
| 159089 | 02-Mar-23 | M2179 | MENARD'S | \$489.71 | | \$489.71 | |
| 159090 | 02-Mar-23 | N2292 | THE AFTERMARKET PARTS COMPANY, LLC. | \$15,023.40 | | \$15,023.40 | |
| 159091 | 02-Mar-23 | Q8455 | QUILL | \$232.74 | | \$232.74 | |
| 159092 | 02-Mar-23 | R2175 | RELIABLE PLUMBING & HEATING COMPANY | \$599.80 | | \$599.80 | |
| 159093 | 02-Mar-23 | S0060 | SAFEWORKS ILLINOIS | \$130.00 | | \$130.00 | |
| 159094 | 02-Mar-23 | S1143 | SCHINDLER ELEVATOR CORP. | \$2,137.19 | | \$2,137.19 | |
| 159095 | 02-Mar-23 | S3086 | SHERWIN-WILLIAMS | \$119.26 | | \$119.26 | |
| 159096 | 02-Mar-23 | S6235 | SOUTHERN BUS & MOBILITY INC | \$180.57 | | \$180.57 | |
| 159097 | 02-Mar-23 | S9020 | SYN-TECH SYSTEMS, INC. | \$2,475.50 | | \$2,475.50 | |
| 159098 | 02-Mar-23 | T2064 | TEE JAY CENTRAL, INC. | \$869.50 | | \$869.50 | |
| 159099 | 02-Mar-23 | U5180 | UNITED PARCEL SERVICE | \$756.73 | | \$756.73 | |
| 159100 | 02-Mar-23 | U5998 | UNIVERSITY OF ILLINOIS | \$32,732.83 | | \$32,732.83 | |
| 159101 | 02-Mar-23 | U60295 | ULINE | \$1,077.09 | | \$1,077.09 | |
| 159102 | 02-Mar-23 | U7357 | CITY OF URBANA | \$1,946.16 | | \$1,946.16 | |
| 159103 | 02-Mar-23 | U7385 | URBANA TRUE TIRES | \$954.95 | | \$954.95 | |
| 159104 | 02-Mar-23 | V2233 | VERIZON WIRELESS | \$360.10 | \$360.10 | \$0.00 | |
| 159105 | 09-Mar-23 | A2488 | AFLAC GROUP INSURANCE | \$223.36 | | \$223.36 | |
| 159106 | 09-Mar-23 | A5085 | AMERENIP | \$8,444.52 | | \$8,444.52 | |
| 159107 | 09-Mar-23 | A5108 | AMERICAN DOWELL SIGN CO., INC. | \$2,883.05 | | \$2,883.05 | |
| 159108 | 09-Mar-23 | A8007 | AT & T | \$930.02 | | \$930.02 | |
| 159109 | 09-Mar-23 | A8155 | ATLAS CAB | \$1,280.00 | | \$1,280.00 | |
| 159110 | 09-Mar-23 | B3555 | BIRKEY'S FARM STORE, INC. | \$666.96 | | \$666.96 | |
| 159111 | 09-Mar-23 | B4909 | JEREMY BLUNIER | \$65.39 | | \$65.39 | |
| 159112 | 09-Mar-23 | C3512 | CINTAS FIRST AID & SAFETY | \$65.57 | | \$65.57 | |
| 159113 | 09-Mar-23 | C6263 | COMCAST CABLE | \$524.27 | | \$524.27 | |
| 159114 | 09-Mar-23 | C6475 | COX ELECTRIC MOTOR SERV. | \$3,125.00 | | \$3,125.00 | |
| 159115 | 09-Mar-23 | D0271 | DANVILLE MASS TRANSIT | \$738.00 | | \$738.00 | |
| 159116 | 09-Mar-23 | D0426 | DAVIS-HOUK MECHANICAL, INC | \$4,770.45 | | \$4,770.45 | |

Champaign-Urbana Mass Transit District
Accounts Payable Check Disbursement List
 BUSEY BANK OPERATING ACCOUNT

From Date: 3/1/2023

Thru Date: 3/31/2023

| CheckNo | ReferenceDate | Reference | Payee | CheckAmount | C-CARTS Portion | MTD Portion | Voided |
|---------|---------------|-----------|--|--------------|--------------------|----------------|--------|
| 159117 | 09-Mar-23 | D2850 | DEVELOPMENTAL SERVICES | \$44,073.00 | | \$44,073.00 | |
| 159118 | 09-Mar-23 | D3630 | DIXON GRAPHICS | \$300.00 | \$300.00 | \$0.00 | |
| 159119 | 09-Mar-23 | F0365 | FASTENAL COMPANY | \$779.38 | | \$779.38 | |
| 159120 | 09-Mar-23 | F2014 | F.E. MORAN, INC. FIRE PROTECTION | \$800.00 | | \$800.00 | |
| 159121 | 09-Mar-23 | G4293 | GLOBAL TECHNICAL SYSTEMS, INC. | \$2,340.98 | | \$2,340.98 | |
| 159122 | 09-Mar-23 | G7308 | GRAINGER | \$774.72 | | \$774.72 | |
| 159123 | 09-Mar-23 | I4745 | ILLINI CONTRACTORS SUPPLY | \$523.00 | | \$523.00 | |
| 159124 | 09-Mar-23 | I5904 | INTERSTATE BATTERIES | \$274.46 | | \$274.46 | |
| 159125 | 09-Mar-23 | I8250 | IVEY AUTO BODY SPECIALIST | \$334.11 | | \$334.11 | |
| 159126 | 09-Mar-23 | J0320 | JANITOR & MAINTENANCE SUPPLIES, INC. | \$298.20 | | \$298.20 | |
| 159127 | 09-Mar-23 | K8564 | KURLAND STEEL COMPANY | \$120.00 | | \$120.00 | |
| 159128 | 09-Mar-23 | L2005 | DONALD DAVID OWEN | \$5,275.00 | | \$5,275.00 | |
| 159129 | 09-Mar-23 | L6446 | LOWE'S | \$179.52 | | \$179.52 | |
| 159130 | 09-Mar-23 | M0175 | QUADIENT FINANCE USA, INC. | \$500.00 | | \$500.00 | |
| 159131 | 09-Mar-23 | M2179 | MENARD'S | \$59.94 | | \$59.94 | |
| 159132 | 09-Mar-23 | N0320 | NAPA AUTO PARTS | \$2.69 | | \$2.69 | |
| 159133 | 09-Mar-23 | N2292 | THE AFTERMARKET PARTS COMPANY, LLC. | \$23,422.55 | | \$23,422.55 | |
| 159134 | 09-Mar-23 | P2255 | PETTY CASH (GENERAL FUND) | \$181.06 | | \$181.06 | |
| 159135 | 09-Mar-23 | P2257 | PETTY CASH (MAINTENANCE) | \$77.21 | | \$77.21 | |
| 159136 | 09-Mar-23 | P4521 | CYNTHIA HOYLE | \$1,137.50 | | \$1,137.50 | |
| 159137 | 09-Mar-23 | Q8455 | QUILL | \$135.98 | | \$135.98 | |
| 159138 | 09-Mar-23 | S0060 | SAFEWORKS ILLINOIS | \$325.00 | | \$325.00 | |
| 159139 | 09-Mar-23 | S3003 | RUSSELL E SHAFFER III | \$396.00 | | \$396.00 | |
| 159140 | 09-Mar-23 | S5516 | SNAP-ON INDUSTRIAL | \$1,319.90 | | \$1,319.90 | |
| 159141 | 09-Mar-23 | S6235 | SOUTHERN BUS & MOBILITY INC | \$193.68 | | \$193.68 | |
| 159142 | 09-Mar-23 | S8027 | STATE FIRE MARSHALL | \$150.00 | | \$150.00 | |
| 159143 | 09-Mar-23 | S8061 | STERICYCLE, INC. | \$186.58 | | \$186.58 | |
| 159144 | 09-Mar-23 | S8165 | STOCKS, INC. | \$461.00 | | \$461.00 | |
| 159145 | 09-Mar-23 | S823190 | STUARD & ASSOCIATES, INC. | \$75.00 | | \$75.00 | |
| 159146 | 09-Mar-23 | T2205 | CONSOLIDATED ELECTRICAL DISTRIBUTORS, IN | \$1,519.08 | | \$1,519.08 | |
| 159147 | 09-Mar-23 | U5180 | UNITED PARCEL SERVICE | \$152.33 | | \$152.33 | |
| 159148 | 09-Mar-23 | U5996 | UNIVERSITY OF ILLINOIS | \$433.00 | | \$433.00 | |
| 159149 | 09-Mar-23 | U7653 | US BANK VENDOR SERVICES | \$1,827.61 | \$161.65 | \$1,665.96 | |
| 159150 | 09-Mar-23 | V2233 | VERIZON WIRELESS | \$2,368.64 | | \$2,368.64 | |
| 159151 | 09-Mar-23 | W6270 | LEROY WOLFE | \$89.93 | | \$89.93 | |
| 159152 | 16-Mar-23 | A5085 | AMERENIP | \$11,616.04 | | \$11,616.04 | |
| 159153 | 16-Mar-23 | A7545 | ILLINI GLASS SOLUTIONS | \$393.08 | | \$393.08 | |
| 159154 | 16-Mar-23 | A8012 | AT&T | \$157.05 | | \$157.05 | |
| 159155 | 16-Mar-23 | B3555 | BIRKEY'S FARM STORE, INC. | \$1,635.18 | | \$1,635.18 | |
| 159156 | 16-Mar-23 | B4788 | BLOSSOM BASKET FLORIST | \$140.00 | | \$140.00 | |
| 159157 | 16-Mar-23 | C2172 | CMS/LGHP | \$485,631.00 | \$3,710.00 | \$481,921.00 | |
| 159158 | 16-Mar-23 | C4511 | CLARKE POWER SERVICES, INC. | \$2,185.02 | | \$2,185.02 | |
| 159159 | 16-Mar-23 | C6258 | COLUMBIA STREET ROASTERY | \$476.60 | | \$476.60 | |
| 159160 | 16-Mar-23 | C6263 | COMCAST CABLE | \$304.85 | | \$304.85 | |
| 159161 | 16-Mar-23 | C8450 | CU HARDWARE COMPANY | \$24.72 | | \$24.72 | |
| 159162 | 16-Mar-23 | D2851 | ROBERT L. DEVAULT | \$49.04 | | \$49.04 | |
| 159163 | 16-Mar-23 | D3575 | DIRECT ENERGY BUSINESS | \$705.85 | | \$705.85 | |
| 159164 | 16-Mar-23 | F6367 | FORD CITY | \$2,593.02 | | \$2,593.02 | |
| 159165 | 16-Mar-23 | G3102 | GHR ENGINEERS & ASSOCIATES, INC. | \$5,469.22 | | \$5,469.22 | |
| 159166 | 16-Mar-23 | H0980 | HDA LIFTS LLC | \$1,615.00 | | \$1,615.00 | |
| 159167 | 16-Mar-23 | I4745 | ILLINI CONTRACTORS SUPPLY | \$230.00 | | \$230.00 | |
| 159168 | 16-Mar-23 | I5562 | INDIANA STANDARDS LABORATORY | \$516.00 | | \$516.00 | |
| 159169 | 16-Mar-23 | J8850 | JX ENTERPRISES, INC. | \$1,735.77 | | \$1,735.77 | |
| 159170 | 16-Mar-23 | L6285 | LOOMIS | \$205.24 | | \$205.24 | |
| 159171 | 16-Mar-23 | M0377 | MARTIN ONE SOURCE | \$658.35 | | \$658.35 | |
| 159172 | 16-Mar-23 | M2179 | MENARD'S | \$849.36 | | \$849.36 | |
| 159173 | 16-Mar-23 | M2310 | MEYER CAPEL | \$67.50 | | \$67.50 | |
| 159174 | 16-Mar-23 | N0320 | NAPA AUTO PARTS | \$820.41 | | \$820.41 | |
| 159175 | 16-Mar-23 | N2292 | THE AFTERMARKET PARTS COMPANY, LLC. | \$43,068.50 | | \$43,068.50 | |
| 159176 | 16-Mar-23 | S0078 | SAFETY-KLEEN CORP. | \$923.31 | | \$923.31 | |
| 159177 | 16-Mar-23 | S6235 | SOUTHERN BUS & MOBILITY INC | \$198.24 | | \$198.24 | |
| 159178 | 16-Mar-23 | U5180 | UNITED PARCEL SERVICE | \$72.35 | | \$72.35 | |
| 159179 | 16-Mar-23 | U7357 | CITY OF URBANA | \$2,248.19 | | \$2,248.19 | |

Champaign-Urbana Mass Transit District
Accounts Payable Check Disbursement List
 BUSEY BANK OPERATING ACCOUNT

From Date: 3/1/2023

Thru Date: 3/31/2023

| CheckNo | ReferenceDate | Reference | Payee | CheckAmount | C-CARTS Portion | MTD Portion | Voided |
|---------|---------------|-----------|--------------------------------------|-------------|--------------------|----------------|--------|
| 159180 | 16-Mar-23 | U7385 | URBANA TRUE TIRES | \$39.95 | | \$39.95 | |
| 159181 | 16-Mar-23 | W3586 | BRADLEY P. WITT | \$913.52 | | \$913.52 | |
| 159182 | 23-Mar-23 | A5085 | AMERENIP | \$6,873.36 | | \$6,873.36 | |
| 159183 | 23-Mar-23 | A7545 | ILLINI GLASS SOLUTIONS | \$286.98 | | \$286.98 | |
| 159184 | 23-Mar-23 | A8007 | AT & T | \$454.76 | | \$454.76 | |
| 159185 | 23-Mar-23 | B0240 | BALLARD POWER SYSTEMS INC. | \$4,433.60 | | \$4,433.60 | |
| 159186 | 23-Mar-23 | B3555 | BIRKEY'S FARM STORE, INC. | \$1,837.02 | | \$1,837.02 | |
| 159187 | 23-Mar-23 | C0350 | CARDMEMBER SERVICE | \$27,164.30 | | \$27,164.30 | |
| 159188 | 23-Mar-23 | C0372 | LOGAN CARR | \$847.35 | | \$847.35 | |
| 159189 | 23-Mar-23 | C6259 | COMMERCE BANK CREDIT CARD | \$7,782.37 | | \$7,782.37 | |
| 159190 | 23-Mar-23 | C6263 | COMCAST CABLE | \$349.82 | | \$349.82 | |
| 159191 | 23-Mar-23 | D0426 | DAVIS-HOUK MECHANICAL, INC | \$7,803.77 | | \$7,803.77 | |
| 159192 | 23-Mar-23 | D6380 | BRIAN DOUBEK | \$138.98 | | \$138.98 | |
| 159193 | 23-Mar-23 | D6449 | AUSTIN DOWNEN | \$133.43 | | \$133.43 | |
| 159194 | 23-Mar-23 | F6367 | FORD CITY | \$749.85 | | \$749.85 | |
| 159195 | 23-Mar-23 | G0350 | QUINTON GARRETT | \$508.72 | | \$508.72 | |
| 159196 | 23-Mar-23 | G2283 | GIBBS TECHNOLOGY COMPANY | \$270.00 | | \$270.00 | |
| 159197 | 23-Mar-23 | G6300 | GOODYEAR TIRE & RUBBER CO | \$13,556.77 | | \$13,556.77 | |
| 159198 | 23-Mar-23 | G7308 | GRAINGER | \$839.75 | | \$839.75 | |
| 159199 | 23-Mar-23 | H0200 | ALLISON HAINES | \$1,321.65 | | \$1,321.65 | |
| 159200 | 23-Mar-23 | H2015 | MICHAEL HEALEA | \$271.86 | | \$271.86 | |
| 159201 | 23-Mar-23 | I1595 | IDENTISYS INCORPORATED | \$2,384.80 | | \$2,384.80 | |
| 159202 | 23-Mar-23 | I4747 | ILLINI FS, INC. | \$22,433.05 | | \$22,433.05 | |
| 159203 | 23-Mar-23 | I4790 | ILLINOIS-AMERICAN WATER | \$2,887.31 | | \$2,887.31 | |
| 159204 | 23-Mar-23 | J0320 | JANITOR & MAINTENANCE SUPPLIES, INC. | \$96.26 | | \$96.26 | |
| 159205 | 23-Mar-23 | J8850 | JX ENTERPRISES, INC. | \$4,877.90 | | \$4,877.90 | |
| 159206 | 23-Mar-23 | L0440 | LAWSON PRODUCTS, INC. | \$70.80 | | \$70.80 | |
| 159207 | 23-Mar-23 | M2179 | MENARD'S | \$518.40 | | \$518.40 | |
| 159208 | 23-Mar-23 | M2310 | MEYER CAPEL | \$6,836.00 | | \$6,836.00 | |
| 159209 | 23-Mar-23 | M9548 | MYERS TIRE SUPPLY | \$165.33 | | \$165.33 | |
| 159210 | 23-Mar-23 | N0320 | NAPA AUTO PARTS | \$468.84 | | \$468.84 | |
| 159211 | 23-Mar-23 | R2175 | RELIABLE PLUMBING & HEATING COMPANY | \$571.49 | | \$571.49 | |
| 159212 | 23-Mar-23 | R6375 | ROSS & WHITE COMPANY | \$5,380.00 | | \$5,380.00 | |
| 159213 | 23-Mar-23 | S0078 | SAFETY-KLEEN CORP. | \$1,247.47 | | \$1,247.47 | |
| 159214 | 23-Mar-23 | S1143 | SCHINDLER ELEVATOR CORP. | \$4,716.75 | | \$4,716.75 | |
| 159215 | 23-Mar-23 | S1148 | MICHAEL D. SCHLOSSER | \$1,000.00 | | \$1,000.00 | |
| 159216 | 23-Mar-23 | S2040 | SECRETARY OF STATE | \$163.00 | | \$163.00 | |
| 159217 | 23-Mar-23 | S3487 | SILVER MACHINE SHOP | \$180.00 | | \$180.00 | |
| 159218 | 23-Mar-23 | S3635 | VALERIE SITTON | \$49.69 | | \$49.69 | |
| 159219 | 23-Mar-23 | S5516 | SNAP-ON INDUSTRIAL | \$822.33 | | \$822.33 | |
| 159220 | 23-Mar-23 | S6235 | SOUTHERN BUS & MOBILITY INC | \$1,343.62 | | \$1,343.62 | |
| 159221 | 23-Mar-23 | T0475 | GRANT TAYLOR | \$561.36 | | \$561.36 | |
| 159222 | 23-Mar-23 | U5180 | UNITED PARCEL SERVICE | \$130.46 | | \$130.46 | |
| 159223 | 23-Mar-23 | U7385 | URBANA TRUE TIRES | \$734.99 | | \$734.99 | |
| 159224 | 23-Mar-23 | W3586 | BRADLEY P. WITT | \$135.00 | | \$135.00 | |
| 159225 | 30-Mar-23 | A1150 | JEREMIAH ACKAH | \$65.39 | | \$65.39 | |
| 159226 | 30-Mar-23 | A5085 | AMERENIP | \$15,045.66 | | \$15,045.66 | |
| 159227 | 30-Mar-23 | A8006 | AT & T MOBILITY LLC | \$180.78 | | \$180.78 | |
| 159228 | 30-Mar-23 | A8007 | AT & T | \$772.41 | | \$772.41 | |
| 159229 | 30-Mar-23 | A8011 | AT&T MOBILITY-CC | \$554.36 | | \$554.36 | |
| 159230 | 30-Mar-23 | A85755 | AUTOMOTIVE COLOR & SUPPLY CORP | \$41.22 | | \$41.22 | |
| 159231 | 30-Mar-23 | B3555 | BIRKEY'S FARM STORE, INC. | \$879.31 | | \$879.31 | |
| 159232 | 30-Mar-23 | B4517 | BLAKE SALES TLP LLC | \$2,750.97 | | \$2,750.97 | |
| 159233 | 30-Mar-23 | C8450 | CU HARDWARE COMPANY | \$114.48 | | \$114.48 | |
| 159234 | 30-Mar-23 | D3575 | DIRECT ENERGY BUSINESS | \$9,236.78 | | \$9,236.78 | |
| 159235 | 30-Mar-23 | F6367 | FORD CITY | \$591.72 | | \$591.72 | |
| 159236 | 30-Mar-23 | G2287 | GFL ENVIRONMENTAL HOLDINGS (US), INC | \$2,558.11 | | \$2,558.11 | |
| 159237 | 30-Mar-23 | G7308 | GRAINGER | \$1,803.80 | | \$1,803.80 | |
| 159238 | 30-Mar-23 | I4790 | ILLINOIS-AMERICAN WATER | \$367.16 | | \$367.16 | |
| 159239 | 30-Mar-23 | I5562 | INDIANA STANDARDS LABORATORY | \$192.00 | | \$192.00 | |
| 159240 | 30-Mar-23 | J0320 | JANITOR & MAINTENANCE SUPPLIES, INC. | \$299.85 | | \$299.85 | |
| 159241 | 30-Mar-23 | J8850 | JX ENTERPRISES, INC. | \$9,118.56 | | \$9,118.56 | |
| 159242 | 30-Mar-23 | K8564 | KURLAND STEEL COMPANY | \$960.00 | | \$960.00 | |

Champaign-Urbana Mass Transit District
Accounts Payable Check Disbursement List
 BUSEY BANK OPERATING ACCOUNT

From Date: 3/1/2023

Thru Date: 3/31/2023

| CheckNo | ReferenceDate | Reference | Payee | CheckAmount | C-CARTS Portion | MTD Portion | Voided |
|---------|---------------|-----------|--|----------------|--------------------|----------------|--------|
| 159243 | 30-Mar-23 | M2179 | MENARD'S | \$133.74 | | \$133.74 | |
| 159244 | 30-Mar-23 | N0320 | NAPA AUTO PARTS | \$2,148.90 | | \$2,148.90 | |
| 159245 | 30-Mar-23 | N2193 | ANDREY NESBITT | \$223.13 | | \$223.13 | |
| 159246 | 30-Mar-23 | O8113 | OTIS ELEVATOR COMPANY | \$3,121.08 | | \$3,121.08 | |
| 159247 | 30-Mar-23 | P2256 | PETTY CASH (CHANGE FUND) | \$294.00 | | \$294.00 | |
| 159248 | 30-Mar-23 | P6385 | POTTER ELECTRIC SERVICE INC. | \$7,572.56 | | \$7,572.56 | |
| 159249 | 30-Mar-23 | P8690 | PYROLYX TIRE RECYCLING, LLC | \$456.00 | | \$456.00 | |
| 159250 | 30-Mar-23 | S0060 | SAFEWORKS ILLINOIS | \$285.85 | | \$285.85 | |
| 159251 | 30-Mar-23 | S2040 | SECRETARY OF STATE | \$163.00 | | \$163.00 | |
| 159252 | 30-Mar-23 | S3115 | DANIEL J. HARTMAN | \$232.00 | | \$232.00 | |
| 159253 | 30-Mar-23 | S6235 | SOUTHERN BUS & MOBILITY INC | \$1,165.18 | | \$1,165.18 | |
| 159254 | 30-Mar-23 | S6962 | SPX CORPORATION | \$9,367.93 | | \$9,367.93 | |
| 159255 | 30-Mar-23 | S8165 | STOCKS, INC. | \$646.00 | | \$646.00 | |
| 159256 | 30-Mar-23 | S8511 | SUNBELT RENTALS | \$2,002.10 | | \$2,002.10 | |
| 159257 | 30-Mar-23 | T2205 | CONSOLIDATED ELECTRICAL DISTRIBUTORS, IN | \$241.03 | | \$241.03 | |
| 159258 | 30-Mar-23 | T3063 | THERMO KING MIDWEST, INC. | \$10,011.88 | | \$10,011.88 | |
| 159259 | 30-Mar-23 | U5180 | UNITED PARCEL SERVICE | \$46.88 | | \$46.88 | |
| 159260 | 30-Mar-23 | U7385 | URBANA TRUE TIRES | \$149.92 | | \$149.92 | |
| 159261 | 30-Mar-23 | V2233 | VERIZON WIRELESS | \$360.10 | \$360.10 | \$0.00 | |
| 3012023 | 01-Mar-23 | D3100 | DIVVY | \$2,962.20 | | \$2,962.20 | |
| 3032023 | 03-Mar-23 | U7359 | URBANA MUNICIPAL EMPL. CREDIT UNION | \$40,977.01 | | \$40,977.01 | |
| 3052023 | 07-Mar-23 | I0025 | VANTAGEPOINT TRANSFER AGENTS - 301281 | \$7,083.92 | | \$7,083.92 | |
| 3062023 | 06-Mar-23 | A2487 | AFLAC | \$5,985.06 | | \$5,985.06 | |
| 3072023 | 07-Mar-23 | I0025 | VANTAGEPOINT TRANSFER AGENTS - 301281 | \$17,553.91 | | \$17,553.91 | |
| 3082023 | 08-Mar-23 | I4830 | I.M.R.F. | \$233,709.32 | | \$233,709.32 | |
| 3082310 | 08-Mar-23 | I4830 | I.M.R.F. | \$4,546.83 | \$3,016.48 | \$1,530.35 | |
| 3092023 | 09-Mar-23 | I0025 | VANTAGEPOINT TRANSFER AGENTS - 301281 | \$10,308.88 | | \$10,308.88 | |
| 3102023 | 01-Mar-23 | S8020 | STANDARD INSURANCE COMPANY | \$2,561.23 | \$58.80 | \$2,502.43 | |
| 3132023 | 17-Mar-23 | I0025 | VANTAGEPOINT TRANSFER AGENTS - 301281 | \$27.64 | | \$27.64 | |
| 3142023 | 17-Mar-23 | I0025 | VANTAGEPOINT TRANSFER AGENTS - 301281 | \$29.68 | | \$29.68 | |
| 3152023 | 17-Mar-23 | I0025 | VANTAGEPOINT TRANSFER AGENTS - 301281 | \$10,407.78 | | \$10,407.78 | |
| 3162023 | 17-Mar-23 | I0025 | VANTAGEPOINT TRANSFER AGENTS - 301281 | \$17,428.16 | | \$17,428.16 | |
| 3172023 | 17-Mar-23 | I0025 | VANTAGEPOINT TRANSFER AGENTS - 301281 | \$7,093.92 | | \$7,093.92 | |
| 3182023 | 16-Mar-23 | U7359 | URBANA MUNICIPAL EMPL. CREDIT UNION | \$41,634.90 | | \$41,634.90 | |
| 3192023 | 16-Mar-23 | C3560 | CIRCLE K FLEET | \$22,244.05 | \$8,531.15 | \$13,712.90 | |
| 3202023 | 20-Mar-23 | D3100 | DIVVY | \$2,627.67 | | \$2,627.67 | |
| 3302023 | 31-Mar-23 | U7359 | URBANA MUNICIPAL EMPL. CREDIT UNION | \$42,999.71 | | \$42,999.71 | |
| 3312023 | 31-Mar-23 | A2487 | AFLAC | \$5,675.70 | | \$5,675.70 | |
| | | | | \$1,542,740.28 | \$16,498.28 | \$1,526,242.00 | |

**Champaign-Urbana Mass Transit District
Accounts Payable ACH Disbursement List
BUSEY BANK OPERATING ACCOUNT**

From Date: 3/1/2023 Thru Date: 3/31/2023

| Pymt Type | Date | Reference | Payee | ACH Amount | C-CARTS Portion | MTD Portion |
|-----------|-----------|--------------|--------------------------------------|-------------|-----------------|-------------|
| ACH | 02-Mar-23 | 250197-A5002 | AMAZON | \$11,276.95 | | \$11,276.95 |
| ACH | 02-Mar-23 | 250197-C2231 | CERTIFIED LABORATORIES | \$1,773.92 | | \$1,773.92 |
| ACH | 02-Mar-23 | 250197-C3105 | CHEMICAL MAINTENANCE, INC. | \$1,603.57 | | \$1,603.57 |
| ACH | 02-Mar-23 | 250197-C4588 | CLEAN UNIFORM COMPANY | \$701.25 | | \$701.25 |
| ACH | 02-Mar-23 | 250197-C6282 | CONNOR COMPANY | \$84.08 | | \$84.08 |
| ACH | 02-Mar-23 | 250197-D2126 | DELL MARKETING LP | \$3,432.42 | | \$3,432.42 |
| ACH | 02-Mar-23 | 250197-D2250 | DELTA SAFETY SERVICES | \$630.00 | | \$630.00 |
| ACH | 02-Mar-23 | 250197-D8587 | DUST & SON OF CHAMPAIGN COUNTY, INC | \$235.13 | | \$235.13 |
| ACH | 02-Mar-23 | 250197-E0368 | EAST PENN MANUFACTURING CO. | \$3,239.40 | | \$3,239.40 |
| ACH | 02-Mar-23 | 250197-E8500 | EUN KYEONG ANNA HENNEQUET | \$2,500.00 | | \$2,500.00 |
| ACH | 02-Mar-23 | 250197-F0367 | FASTENERS ETC., INC. | \$662.46 | | \$662.46 |
| ACH | 02-Mar-23 | 250197-I5613 | INFOUSA MARKETING, INC | \$325.00 | | \$325.00 |
| ACH | 02-Mar-23 | 250197-J0375 | JASPER ENGINES & TRANSMISSIONS | \$4,482.00 | | \$4,482.00 |
| ACH | 02-Mar-23 | 250197-K2190 | KEN'S OIL SERVICE, INC. | \$20,582.74 | | \$20,582.74 |
| ACH | 02-Mar-23 | 250197-K3575 | KIRK'S AUTOMOTIVE | \$3,800.00 | | \$3,800.00 |
| ACH | 02-Mar-23 | 250197-K6269 | KONE INC. | \$260.90 | | \$260.90 |
| ACH | 02-Mar-23 | 250197-M1246 | MCMASTER-CARR SUPPLY CO. | \$1,781.35 | | \$1,781.35 |
| ACH | 02-Mar-23 | 250197-M3505 | MINDFIRE COMMUNICATIONS, INC. | \$2,250.00 | | \$2,250.00 |
| ACH | 02-Mar-23 | 250197-O7370 | O'REILLY AUTOMOTIVE, INC. | \$1,277.82 | | \$1,277.82 |
| ACH | 02-Mar-23 | 250197-P0015 | 3PLAY MEDIA, INC | \$163.25 | | \$163.25 |
| ACH | 02-Mar-23 | 250197-R6120 | ROGARDS OFFICE PRODUCTS | \$298.74 | | \$298.74 |
| ACH | 02-Mar-23 | 250197-S2046 | SECURITAS ELECTRONIC SECURITY INC. | \$491.60 | | \$491.60 |
| ACH | 02-Mar-23 | 250197-S5192 | S.J. SMITH WELDING SUPPLY | \$279.96 | | \$279.96 |
| ACH | 02-Mar-23 | 250197-T7510 | TROPHYTIME | \$210.00 | | \$210.00 |
| ACH | 02-Mar-23 | 250197-U5187 | USSC ACQUISITION CORP | \$53.79 | | \$53.79 |
| ACH | 09-Mar-23 | 250594-A8590 | AUVIK NETWORKS, INC. | \$5,532.00 | | \$5,532.00 |
| ACH | 09-Mar-23 | 250594-C0275 | CCMSI | \$670.00 | | \$670.00 |
| ACH | 09-Mar-23 | 250594-C2165 | CENTRAL ILLINOIS TRUCKS | \$4,046.73 | | \$4,046.73 |
| ACH | 09-Mar-23 | 250594-C3105 | CHEMICAL MAINTENANCE, INC. | \$1,961.53 | | \$1,961.53 |
| ACH | 09-Mar-23 | 250594-C4588 | CLEAN UNIFORM COMPANY | \$771.34 | | \$771.34 |
| ACH | 09-Mar-23 | 250594-C8510 | CURRENT SOLUTIONS OF THE MIDWEST LLC | \$1,320.00 | | \$1,320.00 |
| ACH | 09-Mar-23 | 250594-D2064 | DEEM LANDSCAPING, INC. | \$2,847.00 | | \$2,847.00 |
| ACH | 09-Mar-23 | 250594-D3225 | DH PACE COMPANY, INC. | \$16,285.00 | | \$16,285.00 |
| ACH | 09-Mar-23 | 250594-D8520 | DUNCAN SUPPLY CO. INC. | \$23.64 | | \$23.64 |
| ACH | 09-Mar-23 | 250594-E3390 | EIGHT 22, LLC | \$3,833.00 | | \$3,833.00 |

**Champaign-Urbana Mass Transit District
Accounts Payable ACH Disbursement List
BUSEY BANK OPERATING ACCOUNT**

From Date: 3/1/2023 Thru Date: 3/31/2023

| Pymt Type | Date | Reference | Payee | ACH Amount | C-CARTS Portion | MTD Portion |
|-----------|-----------|---------------|---------------------------------------|-------------|-----------------|-------------|
| ACH | 09-Mar-23 | 250594-E5900 | EAN SERVICES, LLC | \$1,184.02 | | \$1,184.02 |
| ACH | 09-Mar-23 | 250594-H2235 | HERITAGE PETROLEUM, LLC | \$20,776.71 | | \$20,776.71 |
| ACH | 09-Mar-23 | 250594-H3564 | HIRERIGHT GIS INTERMEDIATE CORP, INC. | \$604.45 | | \$604.45 |
| ACH | 09-Mar-23 | 250594-I7667 | ISAKSEN GLERUM WACHTER, LLC | \$700.00 | | \$700.00 |
| ACH | 09-Mar-23 | 250594-J6136 | JOHNSON CONTROLS FIRE PROTECTION LP | \$3,365.25 | | \$3,365.25 |
| ACH | 09-Mar-23 | 250594-K2166 | KEMPER INDUSTRIAL EQUIP. | \$621.00 | | \$621.00 |
| ACH | 09-Mar-23 | 250594-K2190 | KEN'S OIL SERVICE, INC. | \$23,233.22 | | \$23,233.22 |
| ACH | 09-Mar-23 | 250594-K3575 | KIRK'S AUTOMOTIVE | \$3,260.00 | | \$3,260.00 |
| ACH | 09-Mar-23 | 250594-K6269 | KONE INC. | \$1,741.73 | | \$1,741.73 |
| ACH | 09-Mar-23 | 250594-M1246 | MCMaster-CARR SUPPLY CO. | \$322.57 | | \$322.57 |
| ACH | 09-Mar-23 | 250594-O7370 | O'REILLY AUTOMOTIVE, INC. | \$1,100.83 | | \$1,100.83 |
| ACH | 09-Mar-23 | 250594-P4525 | NORMA MCFARLAND | \$463.82 | | \$463.82 |
| ACH | 09-Mar-23 | 250594-S2046 | SECURITAS ELECTRONIC SECURITY INC. | \$295.00 | | \$295.00 |
| ACH | 09-Mar-23 | 250594-T7510 | TROPHYTIME | \$13.00 | | \$13.00 |
| ACH | 09-Mar-23 | 250594-T9069 | TWILIO INC | \$1,308.39 | | \$1,308.39 |
| ACH | 09-Mar-23 | 250594-U60295 | ULINE | \$1,035.04 | | \$1,035.04 |
| ACH | 16-Mar-23 | 250871-A8576 | T & B AUTOMOTIVE EQUIPMENT SALES, INC | \$4,999.99 | | \$4,999.99 |
| ACH | 16-Mar-23 | 250871-C2165 | CENTRAL ILLINOIS TRUCKS | \$6,362.58 | | \$6,362.58 |
| ACH | 16-Mar-23 | 250871-C3105 | CHEMICAL MAINTENANCE, INC. | \$1,629.22 | | \$1,629.22 |
| ACH | 16-Mar-23 | 250871-C4588 | CLEAN UNIFORM COMPANY | \$709.62 | | \$709.62 |
| ACH | 16-Mar-23 | 250871-D2012 | DEAN'S GRAPHICS | \$516.00 | | \$516.00 |
| ACH | 16-Mar-23 | 250871-D8587 | DUST & SON OF CHAMPAIGN COUNTY, INC | \$172.68 | | \$172.68 |
| ACH | 16-Mar-23 | 250871-E0368 | EAST PENN MANUFACTURING CO. | \$882.76 | | \$882.76 |
| ACH | 16-Mar-23 | 250871-F0367 | FASTENERS ETC., INC. | \$9.24 | | \$9.24 |
| ACH | 16-Mar-23 | 250871-G2275 | GENERAL TRUCK PARTS | \$750.00 | | \$750.00 |
| ACH | 16-Mar-23 | 250871-H3564 | HIRERIGHT GIS INTERMEDIATE CORP, INC. | \$1,539.08 | | \$1,539.08 |
| ACH | 16-Mar-23 | 250871-K2190 | KEN'S OIL SERVICE, INC. | \$24,944.60 | | \$24,944.60 |
| ACH | 16-Mar-23 | 250871-K3575 | KIRK'S AUTOMOTIVE | \$1,900.00 | | \$1,900.00 |
| ACH | 16-Mar-23 | 250871-M0350 | MANSFIELD POWER & GAS LLC | \$92,613.74 | | \$92,613.74 |
| ACH | 16-Mar-23 | 250871-M1269 | MCS OFFICE TECHNOLOGIES | \$652.50 | | \$652.50 |
| ACH | 16-Mar-23 | 250871-M3490 | MILITARY MAKEOVER LLC | \$49,000.00 | | \$49,000.00 |
| ACH | 16-Mar-23 | 250871-O7370 | O'REILLY AUTOMOTIVE, INC. | \$1,184.43 | | \$1,184.43 |
| ACH | 16-Mar-23 | 250871-R6120 | ROGARDS OFFICE PRODUCTS | \$188.90 | | \$188.90 |
| ACH | 16-Mar-23 | 250871-S5192 | S.J. SMITH WELDING SUPPLY | \$85.39 | | \$85.39 |
| ACH | 16-Mar-23 | 250871-V3370 | VIA TRANSPORTATION, INC. | \$74,119.50 | | \$74,119.50 |

**Champaign-Urbana Mass Transit District
Accounts Payable ACH Disbursement List
BUSEY BANK OPERATING ACCOUNT**

From Date: 3/1/2023 Thru Date: 3/31/2023

| Pymt Type | Date | Reference | Payee | ACH Amount | C-CARTS Portion | MTD Portion |
|-----------|-----------|--------------|-------------------------------------|-------------|-----------------|-------------|
| ACH | 24-Mar-23 | 251135-C0340 | CARDINAL INFRASTRUCTURE, LLC | \$6,500.00 | | \$6,500.00 |
| ACH | 24-Mar-23 | 251135-C3105 | CHEMICAL MAINTENANCE, INC. | \$898.60 | | \$898.60 |
| ACH | 24-Mar-23 | 251135-C4588 | CLEAN UNIFORM COMPANY | \$824.48 | | \$824.48 |
| ACH | 24-Mar-23 | 251135-C6258 | COLUMBIA STREET ROASTERY | \$89.00 | | \$89.00 |
| ACH | 24-Mar-23 | 251135-D2064 | DEEM LANDSCAPING, INC. | \$1,500.00 | | \$1,500.00 |
| ACH | 24-Mar-23 | 251135-D2126 | DELL MARKETING LP | \$209.81 | | \$209.81 |
| ACH | 24-Mar-23 | 251135-D7700 | DS SERVICES OF AMERICA, INC. | \$9.00 | | \$9.00 |
| ACH | 24-Mar-23 | 251135-D8587 | DUST & SON OF CHAMPAIGN COUNTY, INC | \$83.86 | | \$83.86 |
| ACH | 24-Mar-23 | 251135-F2138 | FEHR GRAHAM & ASSOCIATES LLC | \$1,800.00 | | \$1,800.00 |
| ACH | 24-Mar-23 | 251135-G2320 | GETZ FIRE EQUIPMENT CO. | \$537.00 | | \$537.00 |
| ACH | 24-Mar-23 | 251135-G4293 | GLOBAL TECHNICAL SYSTEMS, INC. | \$5,909.55 | | \$5,909.55 |
| ACH | 24-Mar-23 | 251135-I4840 | ILLINOIS OIL MARKETING | \$566.94 | | \$566.94 |
| ACH | 24-Mar-23 | 251135-I5758 | INIT INC. | \$702.00 | | \$702.00 |
| ACH | 24-Mar-23 | 251135-I7667 | ISAKSEN GLERUM WACHTER, LLC | \$350.00 | | \$350.00 |
| ACH | 24-Mar-23 | 251135-K2190 | KEN'S OIL SERVICE, INC. | \$22,537.59 | | \$22,537.59 |
| ACH | 24-Mar-23 | 251135-M1246 | MCMASTER-CARR SUPPLY CO. | \$448.81 | | \$448.81 |
| ACH | 24-Mar-23 | 251135-M1269 | MCS OFFICE TECHNOLOGIES | \$30.00 | | \$30.00 |
| ACH | 24-Mar-23 | 251135-N2290 | NEW FLYER INDUSTRIES | \$13,294.80 | | \$13,294.80 |
| ACH | 24-Mar-23 | 251135-N2292 | THE AFTERMARKET PARTS COMPANY, LLC. | \$12,572.63 | | \$12,572.63 |
| ACH | 24-Mar-23 | 251135-O7370 | O'REILLY AUTOMOTIVE, INC. | \$749.72 | | \$749.72 |
| ACH | 24-Mar-23 | 251135-O7450 | ORKIN EXTERMINATING CO. | \$7,041.79 | | \$7,041.79 |
| ACH | 24-Mar-23 | 251135-P4500 | PLURALSIGHT, LLC | \$1,197.00 | | \$1,197.00 |
| ACH | 24-Mar-23 | 251135-R6120 | ROGARDS OFFICE PRODUCTS | \$152.55 | | \$152.55 |
| ACH | 24-Mar-23 | 251135-U7355 | U-C SANITARY DISTRICT | \$2,359.32 | | \$2,359.32 |
| ACH | 24-Mar-23 | 251135-W1025 | KARL CHANG | \$720.00 | | \$720.00 |
| ACH | 31-Mar-23 | 251427-A4804 | ALPHA CONTROLS & SERVICES LLC | \$1,520.00 | | \$1,520.00 |
| ACH | 31-Mar-23 | 251427-B2180 | BENEFIT PLANNING CONSULTANTS, INC. | \$663.00 | | \$663.00 |
| ACH | 31-Mar-23 | 251427-C2165 | CENTRAL ILLINOIS TRUCKS | \$3,205.25 | | \$3,205.25 |
| ACH | 31-Mar-23 | 251427-C3100 | CHELSEA FINANCIAL GROUP, LTD. | \$46,406.33 | | \$46,406.33 |
| ACH | 31-Mar-23 | 251427-C3105 | CHEMICAL MAINTENANCE, INC. | \$1,430.29 | | \$1,430.29 |
| ACH | 31-Mar-23 | 251427-C4588 | CLEAN UNIFORM COMPANY | \$788.57 | | \$788.57 |
| ACH | 31-Mar-23 | 251427-C6258 | COLUMBIA STREET ROASTERY | \$169.10 | | \$169.10 |
| ACH | 31-Mar-23 | 251427-D0423 | DAVE & HARRY LOCKSMITHS | \$40.50 | | \$40.50 |
| ACH | 31-Mar-23 | 251427-E4670 | ELEVATOR SAFETY GROUP | \$175.00 | | \$175.00 |
| ACH | 31-Mar-23 | 251427-F0365 | FASTENAL COMPANY | \$632.06 | | \$632.06 |

**Champaign-Urbana Mass Transit District
Accounts Payable ACH Disbursement List
BUSEY BANK OPERATING ACCOUNT**

From Date: 3/1/2023 Thru Date: 3/31/2023

| Pymt Type | Date | Reference | Payee | ACH Amount | C-CARTS Portion | MTD Portion |
|-----------|-----------|--------------|-------------------------------------|--------------|-----------------|--------------|
| ACH | 31-Mar-23 | 251427-G2275 | GENERAL TRUCK PARTS | \$975.00 | | \$975.00 |
| ACH | 31-Mar-23 | 251427-I4841 | ILLINOIS PUBLIC RISK FUND | \$23,218.00 | \$382.00 | \$22,836.00 |
| ACH | 31-Mar-23 | 251427-I5758 | INIT INC. | \$1,475.00 | | \$1,475.00 |
| ACH | 31-Mar-23 | 251427-J6136 | JOHNSON CONTROLS FIRE PROTECTION LP | \$7,696.07 | | \$7,696.07 |
| ACH | 31-Mar-23 | 251427-K2190 | KEN'S OIL SERVICE, INC. | \$43,448.63 | | \$43,448.63 |
| ACH | 31-Mar-23 | 251427-K3575 | KIRK'S AUTOMOTIVE | \$2,154.00 | | \$2,154.00 |
| ACH | 31-Mar-23 | 251427-M1246 | MCMASTER-CARR SUPPLY CO. | \$1,055.69 | | \$1,055.69 |
| ACH | 31-Mar-23 | 251427-M3505 | MINDFIRE COMMUNICATIONS, INC. | \$2,332.02 | | \$2,332.02 |
| ACH | 31-Mar-23 | 251427-N2292 | THE AFTERMARKET PARTS COMPANY, LLC. | \$20,404.34 | | \$20,404.34 |
| ACH | 31-Mar-23 | 251427-O7370 | O'REILLY AUTOMOTIVE, INC. | \$930.06 | | \$930.06 |
| ACH | 31-Mar-23 | 251427-R6120 | ROGARDS OFFICE PRODUCTS | \$803.02 | | \$803.02 |
| | | | | \$662,578.21 | \$382.00 | \$662,196.21 |

Champaign Urbana Mass Transit District
Accounts Payable Check Disbursement List

Checking Account #: 011-8189-0

FLEX CHECKING-BUSEY BANK

From Date: 3/31/2023

Thru Date: 3/31/2023

| Check # | Check Date | Ref # | Name | Amount | Voided |
|---------|------------|-------|----------------------|---------------|--------|
| 3312023 | 3/31/2023 | F4640 | FLEX-EMPLOYEE REIMB. | \$11,213.53 | |
| | | | | Total: | |
| | | | | \$11,213.53 | |



| Financial Information | Fiscal Year 2023 | | | | |
|--|------------------|--------------|--------------|-------------|---------------------|
| | 1st Quarter | 2nd Quarter | 3rd Quarter | 4th Quarter | Fiscal Year to Date |
| | Actual | Actual | Actual | Actual | Actual |
| Total Expenses (-) | \$220,040.29 | \$230,007.19 | \$222,305.24 | | \$672,352.72 |
| Passenger Revenue (+) | \$10,844.96 | \$10,991.86 | \$11,146.86 | | \$32,983.68 |
| Rantoul Service Contract (+) | \$25,784.19 | \$29,052.00 | \$29,100.00 | | \$83,936.19 |
| IDOT Reimbursement (+) (DOAP, 5311 & CARES Funding) | \$183,411.14 | \$189,963.33 | \$182,058.38 | | \$555,432.85 |
| Balance | \$0.00 | \$0.00 | \$0.00 | \$0.00 | \$0.00 |

| Other Information | Fiscal Year 2023 | | | | |
|-------------------|------------------|-------------|-------------|-------------|---------------------|
| | 1st Quarter | 2nd Quarter | 3rd Quarter | 4th Quarter | Fiscal Year to Date |
| CUMTD G&A Hours | 308 | 155 | 113 | | 576 |
| CUMTD G&A Cost | \$17,580.61 | \$8,287.00 | \$5,581.68 | | \$31,449.29 |
| Ridership | 5,302 | 6,518 | 6,199 | | 18,019 |
| Revenue Miles | 64,682 | 68,098 | 67,956 | | 200,736 |
| Revenue Hours | 3,120 | 3,222 | 3,620 | | 9,962 |

MTD - Bank & Investment Balances

| Financial Institution | Bank Bal @ 3/31/23 | Interest Rate | Maturity |
|--------------------------------|------------------------|---------------|----------|
| Busey Bank | | | |
| Payroll | \$5,000.00 | - | - |
| Illinois Terminal - Square POS | \$61,333.53 | - | - |
| Operating | \$350,000.00 | - | - |
| C-CARTS | \$82,904.13 | - | - |
| Sec 125 Flexible Spending Plan | \$52,284.37 | - | - |
| ATM | \$32,324.82 | - | - |
| Money Market | \$19,349,351.45 | 0.50% | - |
| First Mid Bank | \$12,995,551.61 | 1.50% | - |
| Prospect Bank | | | |
| MuniWise | \$1,457,405.05 | 1.19% | - |
| MuniWise Flex | \$8,103,839.27 | 4.61% | - |
| Total | \$42,489,994.23 | | |



To: Board of Trustees
From: Ashlee McLaughlin, External Affairs Director
Date: April 26, 2023
Subject: Approval of Davis-Houk Mechanical Contract for Bus Wash Improvements

- A. Introduction:** The District is in need of repairs and upgrades for the bus wash to improve its current condition and extend its useful life.
- B. Recommended Action:** Authorize Managing Director to execute a contract with Davis-Houk Mechanical (Davis-Houk) for \$135,000 to replace the wash bay’s makeup air unit, various exhaust fans, radiant tube heaters, and all associated electrical work.
- C. Prior Trustee Action:** None
- D. Summary:** Following the procurement requirements for federally funded projects between \$10,000 and \$250,000, the District requested quotes from three qualified contractors to perform the necessary work. On March 23, 2023, the three contractors were invited to the District’s Maintenance Facility at 803 E University Ave to see the wash bay and ask questions about the project. On April 4, 2023, three quotes were received from the following contractors: Davis-Houk Mechanical, Reliable Mechanical Company, and A & R Mechanical Contractors. It was determined that Davis-Houk’s proposal satisfied all the requirements and provided the lowest price to complete the requested work.
- E. Background:** MTD’s bus wash is 12 years old and has provided over 200,000 washes. A recent inspection indicated that with some repairs and upgrades, its useful life may last up to 400,000 washes. The current work being contracted includes replacing the wash bay’s makeup air unit, various exhaust fans, radiant tube heaters, and all associated electrical work.
- F. Advantages/disadvantages:** Approving the contract with Davis-Houk allows the District to improve the current condition of the bus wash and extend its useful life.
- G. Budget & Staffing Impacts:** This project is in the FY2023 budget and will be funded 100% (\$135,000) with Federal funds through the American Rescue Plan Act of 2021 (ARPA). The FY2023 budget and the Federal grant identify \$150,000 for this line item, both records will be updated to reflect the final price.

CONTRACT

1. Contract Documents

The Contract consists of the documents listed below. In case of any conflict among these documents, the order of precedence shall be:

1. Form of Contract
2. GHR No. 7506 Project Manual
3. Quote submitted by Davis-Houk Mechanical, Inc. on 04/04/2023
4. Federal Transit Administration (FTA) Requirements

A modification or change to any Contract document shall take its precedence from the term it amends. All other documents and terms and conditions shall remain unchanged.

2. Compensation

The Champaign-Urbana Mass Transit District shall pay \$128,700.00 for the base portion of this project and \$6,300.00 for the alternate portion of this project; and Davis-Houk Mechanical, Inc. shall accept the amount as full compensation for all costs and expenses of completing the Work as described in the project manual in accordance with the Contract, including but not limited to all labor and material required, overhead, shipping, risks and obligations, taxes (as applicable), fees and profit, and any unforeseen costs.

Method of payment

All costs charged to the Project shall be supported by properly executed payrolls, time records, invoices, contracts, or vouchers evidencing in detail the nature and propriety of the charges, in form and content satisfactory to MTD.

3. Contract Term and Period of Performance

The effective date of this Contract shall be the date in which the Contract is fully executed.

4. Notices

Any Notice legally required to be given by one party to another under the Contract shall be in writing, dated and signed by the party giving such Notice or by a duly authorized representative of such party. Notices shall not be effective unless transmitted by any method that provides confirmation of transmission and delivery, such as email with return receipt, fax, certified mail or registered mail and addressed to:

Champaign-Urbana Mass Transit District
1101 East University Avenue
Urbana, Illinois 61802
FAX: 217.384.8215

Davis-Houk Mechanical, Inc.
1801 East University Avenue – A
Urbana, Illinois 61802
FAX: 217.239.0042

5. Entire Agreement

This Contract constitutes the complete and entire agreement between the Champaign-Urbana Mass Transit District and Davis-Houk Mechanical, Inc. and supersedes any prior representations, understandings, communications, commitments, agreements or Proposals, oral or written, that are not incorporated as a part of the Contract.

| Champaign-Urbana Mass Transit District | Davis-Houk Mechanical, Inc. |
|---|---|
| _____ Signature of Authorized Official | _____ Signature of Authorized Official |
| _____ (Print or type name & title) | _____ (Print or type name & title) |
| _____ Date | _____ Date |
| 37-0925614 Tax ID Number | 20-5501978 Tax ID Number |



To: Board of Trustees
From: Ashlee McLaughlin, External Affairs Director
Date: April 26, 2023
Subject: Approval of Davis-Houk Mechanical Contract for Server Room Cooling

- A. Introduction:** The District’s server room in the Administration & Operations Building at 1101 East University Avenue in Urbana is in need of additional cooling to keep the equipment operational and in good working condition.
- B. Recommended Action:** Approve a budget revision so the Managing Director can execute a contract with Davis-Houk Mechanical (Davis-Houk) for \$84,900 to upgrade the cooling equipment for the server room at the Administration & Operations Building.
- C. Prior Trustee Action:** On May 25, 2022, the Board of Trustees provided approval to contract with Dell Technologies in the amount of \$147,631 to provide a new virtual server cluster after an HVAC failure caused the server room to overheat, damaging the server equipment.
- D. Summary:** Following the procurement requirements for locally funded projects over \$50,000, the District opened an Invitation for Bid (IFB) for the Server Room Cooling Upgrade from March 10, 2023 to April 4, 2023. The IFB was posted on mtd.org and sent to local contractors. A pre-bid meeting was held at the Administration & Operations Building on March 21, 2023. The contractors in attendance were able to see the server room and ask questions about the project. On April 4, 2023, five bids were submitted by the following contractors: Davis-Houk Mechanical, Reliable Mechanical Company, A & R Mechanical Contractors, Helm, and United Mechanical Group. It was determined that Davis-Houk’s proposal satisfied all the requirements and provided the lowest price to complete the requested work.
- E. Background:** MTD recently implemented a new virtual server cluster in the server room. The server equipment creates heat when in operation and can be damaged if the environment around it is too warm, as evidenced by the HVAC failure in 2022. Since the new equipment was installed, portable AC units have been utilized for backup cooling to ensure the temperature stays below a certain threshold. Installing permanent supplemental cooling equipment in the server room will more efficiently protect the new server equipment and provide backup if an AC unit fails. The current work includes adding mini-split HVAC units to the server room and protecting the existing server equipment in the process.
- F. Advantages/disadvantages:** Approving the contract with Davis-Houk allows the District to improve the server room’s climate control to protect the server equipment.
- G. Budget & Staffing Impacts:** This project is not currently in the FY2023 budget and will be funded with 100 percent local funds in the amount of \$84,900.

CONTRACT

1. Contract Documents

The Contract consists of the documents listed below. In case of any conflict among these documents, the order of precedence shall be:

1. Form of Contract
2. IFB: GHR No. 7482
3. Bid submitted by Davis-Houk Mechanical, Inc. on 04/04/2023

A modification or change to any Contract document shall take its precedence from the term it amends. All other documents and terms and conditions shall remain unchanged.

2. Compensation

The Champaign-Urbana Mass Transit District shall pay \$84,900.00 and Davis-Houk Mechanical, Inc. shall accept the amount as full compensation for all costs and expenses of completing the Work as described in the proposal in accordance with the Contract, including but not limited to all labor and material required, overhead, shipping, risks and obligations, taxes (as applicable), fees and profit, and any unforeseen costs.

Method of payment

All costs charged to the Project shall be supported by properly executed payrolls, time records, invoices, contracts, or vouchers evidencing in detail the nature and propriety of the charges, in form and content satisfactory to MTD.

3. Contract Term and Period of Performance

The effective date of this Contract shall be the date in which the Contract is fully executed.

4. Notices

Any Notice legally required to be given by one party to another under the Contract shall be in writing, dated and signed by the party giving such Notice or by a duly authorized representative of such party. Notices shall not be effective unless transmitted by any method that provides confirmation of transmission and delivery, such as email with return receipt, fax, certified mail or registered mail and addressed to:

Champaign-Urbana Mass Transit District
1101 East University Avenue
Urbana, Illinois 61802
FAX: 217.384.8215

Davis-Houk Mechanical, Inc.
1801 East University Avenue - A
Urbana, Illinois 61802
FAX: 217.239.0042

5. Entire Agreement

This Contract constitutes the complete and entire agreement between the Champaign-Urbana Mass Transit District and Davis-Houk Mechanical, Inc. and supersedes any prior representations, understandings, communications, commitments, agreements or Proposals, oral or written, that are not incorporated as a part of the Contract.

| Champaign-Urbana Mass Transit District | Davis-Houk Mechanical, Inc. |
|---|------------------------------------|
| Signature of Authorized Official | Signature of Authorized Official |
| (Print or type name & title) | (Print or type name & title) |
| Date | Date |
| 37-0925614 | 20-5501978 |
| Tax ID Number | Tax ID Number |



To: Karl Gnadt, Managing Director/CEO
 From: Ashlee McLaughlin, External Affairs Director
 Date: April 26, 2023
 Subject: Approval of Goodyear Lease Contract for Bus Tires

- A. Introduction:** The District is in need of a new contract for bus tire leasing services as the current contract will expire June 30, 2023.
- B. Recommended Action:** Authorize Managing Director to execute a contract with Goodyear Tire & Rubber Company (Goodyear) per the mileage rates reflected in item D for a period of three years with three one-year renewal options beginning July 1, 2023.
- C. Summary:** The District released a request for proposals (RFP) on January 23, 2023, and formed an evaluation committee to review the proposals received in response. On February 23, 2023, MTD received two proposals in response to RFP No. 2023-002 from the following companies: Bridgestone Corporation and the Goodyear Tire & Rubber Company. The Evaluation Committee independently reviewed and scored the proposals received. On March 21, 2023, the Evaluation Committee met to discuss their independent evaluations. It was determined that Goodyear would be the best fit to provide bus tire leasing services due to the experience, reporting processes, and competitive pricing described in Goodyear’s proposal. Goodyear’s pricing is shown below:

| | List Price per Tire | Rate per 32 nd of Tread Depth |
|---------------|---------------------|--|
| Years 1-3 | \$ 0.007889 | \$22.07 |
| Year 4 Option | \$ 0.007416 | \$22.07 |
| Year 5 Option | \$ 0.007194 | \$22.07 |
| Year 6 Option | \$ 0.007194 | \$22.07 |

- D. Background:** Leasing equipment, vehicles, and associated capital items qualifies as an eligible expense for the Illinois Downstate Operating Assistance Program (DOAP). Up to 65 percent of eligible expenses are reimbursed by the State through this program. The tire leasing entity will furnish tires in sufficient quantity to keep all vehicles fully equipped and to provide a reserve supply, at a maximum level determined by Goodyear, as spare stock inventory to be mounted on rims and kept in the District’s garage for use in case of emergency. Vehicles will be equipped with the sizes and types of rims of sufficient strength to permit inflation necessary for the load carrying capacity required and spaced to conform to the approved standards of The Tire & Rim Association of America, Inc. The District agrees to exclusively use Goodyear tires on the bus fleet; however, the District may use up to 5 percent of its fleet, for test purposes, on tires of other manufacturers.
- E. Advantages/disadvantages:** Approving the contract with Goodyear allows the District to maintain uninterrupted access to bus tires through a lease contract.
- F. Budget & Staffing Impacts:** This contract will be funded with 65 percent state funds through the Illinois Downstate Operating Assistance Program (DOAP) and 35 percent local funds.



To: Karl Gnadt, Managing Director
 From: Victoria Carrington, Finance & Procurement Specialist
 Date: April 13, 2023
 Subject: Bus Tire Leasing Contract

On January 23, 2023, MTD issued a request for proposals (RFP) for a Bus Tire Leasing Contract for MTD’s bus fleet for a period of three years with three one-year renewal options. An Evaluation Committee was formed to review the proposals received in response to RFP 2023-002. The Committee consisted of the following: Dutch Dowers, Maintenance Utility Worker; Josh Berbaum, Director of Maintenance & Facilities; Quincy Summers, Maintenance Utility Worker; and Rebekka Bolt, Assistant Director of Facilities. The Evaluation Committee based proposal evaluations on the criteria in Table 1.

Table 1: Evaluation Criteria

| | |
|--|-----|
| Qualifications, Related Experience, & References | 40% |
| Information Requirements from MTD | 30% |
| Cost | 30% |

On February 23, 2023, MTD received two proposals in response to RFP No. 2023-002 from the following companies: Bridgestone Corporation and the Goodyear Tire & Rubber Company. The Evaluation Committee independently reviewed and scored the proposals received. On March 21, 2023, the Evaluation Committee met to discuss their independent evaluations. The average scoring of the evaluations is shown in Table 2.

Table 2: Evaluation Scores

| Criteria (possible points) | Bridgestone | Goodyear |
|---|--------------------|-----------------|
| Qualifications, Related Experience, & References (40) | 30.5 | 37.5 |
| Information Requirements from MTD (30) | 22.5 | 27.75 |
| Cost (30) | 22.5 | 26.25 |
| Total | 75.5 | 91.5 |

Notes from the internal discussion are shown below.

Bridgestone

- Tire groove design is jagged, good for winter seasons
- Tires have 2/32nd more usable tread than Goodyear; however, concerns of clearance
- Provides QR code technology to manage inventory, not something MTD has experienced before but could help save time; concerns of QR codes being visible after sidewall wear
- Concerns of daily data reporting being too frequent for MTD’s processes and procedures and workforce availability

Goodyear

- Tires are lighter weight than Bridgestone, likely equating to better fuel economy
- Tire groove design is straight, wearing the tire more evenly
- Reporting frequency, processes and procedures align with MTD’s current process and workforce availability
- Provided referrals that reflected similarities in fleet size and range
- New tread depth size is accurate for MTD’s fleet needs

Table 3 shows the price proposal of tire cost provided by proposers.

Table 3: Price Proposals

| | List Price per Tire | | Rate per 32 nd of Tread Depth | |
|---------------|---------------------|-----------------|--|-----------------|
| | Bridgestone | Goodyear | Bridgestone | Goodyear |
| Years 1-3 | \$ 0.006327 | \$ 0.007889 | \$24.53 | \$22.07 |
| Year 4 Option | \$ 0.006327 | \$ 0.007416 | \$24.53 | \$22.07 |
| Year 5 Option | \$ 0.006327 | \$ 0.007194 | \$24.53 | \$22.07 |
| Year 6 Option | \$ 0.006327 | \$ 0.007194 | \$24.53 | \$22.07 |

Based on the evaluations, the Committee unanimously recommends the Goodyear Tire & Rubber Company for award of this contract.

CONTRACT

1. Contract Documents

This Contract Agreement (this "Agreement") effective July 1, 2023, by and between the CHAMPAIGN-URBANA MASS TRANSIT DISTRICT, of Urbana, Illinois ("MTD") and THE GOODYEAR TIRE & RUBBER COMPANY, a corporation of Akron, Ohio ("Goodyear").

The Contract consists of the documents listed below. In case of any conflict among these documents, the order of precedence shall be:

1. Form of Contract
2. RFP #2023-002
3. Proposal submitted by Goodyear Tire & Rubber Company on 02/23/2023

A modification or change to any Contract document shall take its precedence from the term it amends. All other documents and terms and conditions shall remain unchanged. Any modifications or alterations may only occur upon written consent of both parties or by special written document signed by both parties in like manner.

2. General Terms and Conditions

Goodyear will furnish MTD tires for use on vehicles currently owned/operated by MTD under the terms and conditions set forth below; however, MTD may use tires in its possession, not furnished by Goodyear under any similar mileage contract previously in effect, until such tires are unfit for further service.

A tire means a casing, for a tubeless tire; and a vehicle means any vehicle of seven or more passenger carrying capacity, designed for operation on pneumatic tires and used publicly for the transportation of passengers.

Tires furnished shall be in sufficient quantity to keep all vehicles fully equipped and to provide a reserve supply, at a maximum level determined by Goodyear, as spare stock inventory to be mounted on rims and kept in MTD's garage for use in case of emergency. To assure its effective use, existing spare stock shall be applied prior to application of new inventory.

Vehicles will be equipped with the sizes and types of rims of sufficient strength to permit inflation necessary for the load carrying capacity required and spaced to conform to the approved standards of The Tire & Rim Association of America, Inc.

MTD agrees to use exclusively tires furnished by Goodyear; however, MTD may use up to 5% of its fleet, for test purposes, on tires of other manufacturers. MTD will not transfer, sublet, or lend the tires furnished by Goodyear, or permit the tires to be used by anyone other than MTD, without the prior written consent of Goodyear.

3. Compensation

The Champaign-Urbana Mass Transit District shall pay the Effective Rate per tire mile as described in the proposal and detailed in the table below. Goodyear Tire & Rubber Company shall accept the amount as full compensation for all costs and expenses of completing the Work as

described in the proposal in accordance with the Contract, including but not limited to all labor and material required, overhead, shipping, risks and obligations, taxes (as applicable), fees and profit, and any unforeseen costs.

Rates and Adjustment

On all mileage run on and after the dates specified, the rate(s) per tire mile shall be as follows:

| Period | Effective From | Effective To | Price per Tire Mile | Rate Group | Tire Size(s) |
|---------------|----------------|--------------|---------------------|------------|--------------|
| Year 1 | 07/01/2023 | 06/30/2024 | \$0.007889 | A | B305/70R22.5 |
| Year 2 | 07/01/2024 | 06/30/2025 | \$0.007889 | A | B305/70R22.5 |
| Year 3 | 07/01/2025 | 06/30/2026 | \$0.007889 | A | B305/70R22.5 |
| Year 4 Option | 07/01/2026 | 06/30/2027 | \$0.007416 | A | B305/70R22.5 |
| Year 5 Option | 07/01/2027 | 06/30/2028 | \$0.007194 | A | B305/70R22.5 |
| Year 6 Option | 07/01/2028 | 06/30/2029 | \$0.007194 | A | B305/70R22.5 |

Such tire rate(s) shall be referred to as the "Effective Rate(s)."

Method of Payment

All costs charged to the Project shall be supported by properly executed payrolls, time records, invoices, contracts, or vouchers evidencing in detail the nature and propriety of the charges, in form and content satisfactory to MTD.

Payment

MTD shall pay Goodyear for mileage run on the leased tires during the month immediately preceding, and for any tires invoiced in accordance with Articles 4 and 6, at the effective rate per tire mile for vehicles as shown in the attached Exhibit B. Billing terms on invoices shall be net 30 days. A separate rate and value shall apply to any other make/model vehicles not shown on Exhibit B placed in operation during the term of this Agreement or one requiring a different size and/or construction type of tire.

Taxes

In addition to the effective mileage rate, MTD shall pay Goodyear an amount to compensate for the current Manufacturers' Excise Tax under the U.S. Revenue Act of 1932, as amended, and for any business, sales, excise, use, processing or similar tax imposed upon the goods leased or sold, or service rendered, or upon the manufacture, sale, delivery or disposal, or whenever any tax, excise, levy, law, or governmental regulation shall have the effect directly or indirectly of increasing the cost of manufacture, sale, delivery or disposal of such goods or service. MTD will furnish tax exemption certificates and will be exempt from all taxes covered. MTD will be responsible for all property taxes on the tires, making any required listing for taxation in its own name as Bailee.

Right to Audit

Upon request, and at reasonable times during normal business hours, MTD shall make available to Goodyear or its designated representative all applicable records for review and audit.

4. Term of Agreement & Disposition of Tires at Termination

This Agreement is effective on the 1st day of July 2023 and will terminate on the 30th day of June 2026; subject, however, to automatic renewal for three additional twelve (12) month periods, unless either party notifies the other in writing of their decision to terminate this Agreement no less than thirty (30) calendar days prior to commencement of any such twelve (12) month renewal period.

At such termination date, unless the parties enter into a new mileage agreement to become immediately effective, MTD will provide Goodyear with an inventory of all consigned tires, complete with remaining tread depths. Such inventory will be subject to Goodyear's verification and approval. MTD will, within 30 days after submission of statement by Goodyear, pay for the residual value in each consigned tire at prices to be computed as set forth in Article 6, plus any applicable taxes.

Title to all tires and tubes shall remain with Goodyear until all such statements and billings have been paid in full, at which time MTD will acquire each such remaining used tire as is, and Goodyear makes no warranties as to the condition or fitness for continued use of such tires.

5. Mileage Reports and Tire Records; Calculation of Miles Run

MTD shall keep an accurate record of the total number of miles run by each vehicle during the term of this Agreement and submit a report of such total mileage on each vehicle prior to the 10th day of the month following the month the miles were run. Vehicle mileage shall be determined either by means of an instrument that will accurately record mileage being run on each vehicle, or by multiplying the number of trips of each vehicle by the number of miles over the route it is driven and adding all miscellaneous mileage that may be run to and from the routes, such as in testing vehicles and instructing drivers. If the latter method is used, MTD shall furnish Goodyear a schedule of the established routes covered by its vehicles and shall advise Goodyear of any changes, additions, or deletions in such routes. Goodyear shall have access to such recording instruments and/or mileage records at all times.

On a monthly basis, concurrently with providing vehicle mileage as required by this Article 5, MTD will provide to Goodyear the following information with respect to the month for which vehicle mileage is being reported:

- a. the number of Goodyear leased tires newly applied or removed by vehicle during such month, and at the discretion of MTD, subject to the calculation provision below, date of application or removal;
- b. for each vehicle the number and tire size of all leased tires equipped (whether newly applied or already equipped) on such vehicle during such month;

- c. total spare stock tire inventory as of the end of such month, indicating number of tires by size, type, and, if applicable, location; and (d) the date of receipt of tire deliveries during such month.

Mileage run will be calculated on the basis of the foregoing information, provided that if in any month a tire is reported as equipped on a vehicle, but the date of tire application or removal is not provided, mileage will be calculated on the assumption that the tire was equipped on the vehicle throughout the relevant month. For any tires delivered to MTD but not reported by MTD to be in spare stock in a given month (and not previously removed from service) to the extent vehicles are reported for such month as having tire positions not equipped with Goodyear leased tires, Goodyear will have the right to:

- i. calculate miles run for such month on the assumption that such tires were applied to MTD's most active vehicles with such non-equipped positions as of the beginning of the report month or
- ii. invoice MTD for tire loss in accordance with Article 6.

6. Use, Care, & Storage of Tires

MTD agrees to provide a safe, suitable place in an enclosed building for storage of spare tires and tires unfit for further service so that such tires are not subject to damage by the elements; to either keep each vehicle equipped with at least one properly inflated spare tire or provide adequate road service for its fleet; and to pay Goodyear for any damage or loss resulting from accident, fire, adverse mechanical conditions, improper or negligent use, loss, theft or fraudulent conversion of said tires, or from the operation of a vehicle with an underinflated or flat tire. The value of original tread and retread tires shall be determined by multiplying the number of 32nds of an inch of tread rubber remaining on each tire by the applicable cost per 32nd then in effect, and show on Exhibit C, plus applicable current casing value.

If a tire is sold or damaged, payment will be of the residual value of the tire, subject to the terms of this Article 6. Such residual value will be calculated and invoiced based on remaining tread depth value at date of sale, or as of date of damage, and determined as set forth above. MTD shall provide Goodyear with access to damaged tires for purposes of determining each tire's brand number and corresponding tread depth. In the case of sold tires, MTD shall provide to Goodyear the brand number and corresponding tread depth reading, provided that if requested by Goodyear, MTD shall provide Goodyear with access to such sold tires. If MTD does not provide such access to tires damaged or, if applicable, sold, or if a tire is lost, stolen or otherwise unavailable for inspection to determine remaining tread depth, MTD will be invoiced at an amount not to exceed 50% of applicable new tire residual value (determined as set forth above, except based on the number of 32nds of an inch of tread rubber on an applicable new tire), unless verifiable documentation can be provided as to value in excess of 50%.

7. Service

MTD agrees to apply to, remove from, and remount on rims or wheels tires furnished, and to perform all other tire service, including regrooving and repair of flat tires, as required by Goodyear to keep them in proper operating condition. MTD will install and maintain in its garage suitable facilities for inflation of tires and will keep said tires inflated to conform to the approved standards

of The Tire & Rim Association of America, Inc. MTD will determine at all times when tires are to be removed from vehicles. Goodyear will determine the fitness for return to service of a particular tire or tires; however, MTD will not be obliged to use tires which, because of their condition, interfere unreasonably with the use and operation of vehicles. All tires determined by Goodyear to be permanently unfit for further service shall be returned to Goodyear promptly by MTD.

8. Vehicles

Additional Vehicles

If MTD acquires new vehicles, MTD agrees:

1. to acquire such vehicles less tires,
2. to give Goodyear ample notice of such acquisition, and
3. to have such vehicles equipped with Goodyear tires of sufficient carrying capacity to conform to the approved standards of The Tire & Rim Association of America, Inc.

Upon Goodyear's delivery of the tires to the North American OE Manufacturer, refurbisher, or other outside source designated by MTD, MTD agrees to assume responsibility for such consigned tires in accordance with all terms of this Agreement. If such vehicles equipped with Goodyear's tires are driven overland during delivery, Goodyear shall receive payment at the usage rate specified in accordance with Articles 3, 4 and 6.

Sale or Disposition of Vehicles

If MTD sells or in any manner disposes of any vehicles which shall have been equipped with tires supplied under this Agreement, MTD shall be obligated to provide the brand numbers of sold tires and corresponding tread depth, or if MTD places tires in storage or renders a vehicle inactive through discontinuance of its business or discontinuance of the use of any such tires or vehicles for a period exceeding ninety (90) days, MTD shall provide Goodyear prompt notice thereof and Goodyear shall have the option to require MTD to:

- a. remove tires from inactive vehicles or spare stock inventory and reapply on active wheel positions, or
- b. pay Goodyear for the residual value in each such tire, including spares and/or obsolete spare stock, at prices to be computed as set forth in Article 6, plus any applicable taxes.

Leased Vehicles

MTD represents and warrants that it owns outright or has legal possession of all vehicles comprising the fleet operated by it. If MTD acquires the right to operate any vehicles not owned by it ("Leased Vehicles"), MTD agrees:

- a. to notify Goodyear of the details of such arrangement,
- b. that all Leased Vehicles will be furnished to MTD by the owner without tires so that they may be equipped with tires furnished by Goodyear under this Agreement, and

- c. to obtain an agreement acceptable to and for the benefit of Goodyear, whereby the owner acknowledges Goodyear's ownership and right to possession of all tires supplied by it and waives all rights by virtue of their use on Leased Vehicles or otherwise.

Should MTD surrender or otherwise lose possession of any of the Leased Vehicles equipped with tires supplied by Goodyear, MTD shall purchase each tire (including spares) in accordance with this Article 8. The term "Leased Vehicles" shall not apply to any vehicle rented or borrowed for temporary use for a period not to exceed 120 days.

9. Run-Out Option

Notwithstanding any provision to the contrary contained herein, Goodyear hereby grants to MTD, the following option:

- a. Upon the expiration of the term, as extended and amended, and only in the event MTD wishes to change supplier, MTD has the right to further extend this Agreement and continue to use all tires furnished by Goodyear in MTD's possession on the expiration date for a period of thirty-six (36) months from said expiration date.
- b. All terms, conditions and provisions of this Agreement, as previously amended and extended, shall remain in full force and effect during said thirty-six (36) month period, except that Goodyear shall be relieved of any requirement to furnish MTD with tires, repair material, equipment, or tire service during said thirty-six (36) month period unless requested by MTD and agreed to by Goodyear.
- c. The rate or rates per tire mile in effect during such thirty-six (36) month period shall be the rate or rates in effect immediately preceding the commencement date of such thirty-six (36) month period.
- d. It is understood that MTD shall continuously use such tires insofar as practicable on its highest mileage runs until such tires are rendered permanently unfit for service during said thirty-six (36) month period.
- e. Upon expiration of said thirty-six (36) month period, MTD shall pay for any unused mileage remaining in such tires at the rate set forth in paragraph (c) above. MTD will acquire each such used tire as is, and Goodyear makes no warranties as to the condition or fitness for continued use of such tires. The amount of the unused mileage shall be determined as set forth in Article 4 of this Agreement.
- f. The option granted herein is exercisable upon thirty (30) calendar days prior written notice to the expiration date of the term, as extended and amended. It is MTD's responsibility to provide written notification to Goodyear per Article 17 of this Agreement.

10. Title to Tires & Liens on Vehicles; Security Agreement

Title to all tires furnished shall remain with Goodyear or its assignees and, upon purchase by MTD in accordance with Article 4, shall continue to remain with Goodyear until Goodyear has received full payment of all sums owed by MTD under the terms of this Agreement. MTD will indemnify and hold Goodyear harmless against any claim on Goodyear's tires made by any holder of a lien on any vehicles on which MTD uses such tires. MTD agrees to keep Goodyear advised of such liens, giving Goodyear any and all information, that Goodyear may request.

If, for any reason, any of the tires or equipment furnished to MTD by Goodyear pursuant to this Agreement is determined to be property of MTD, notwithstanding the provisions of this Article 10 or otherwise in this Agreement, MTD shall be deemed to have hereby granted, and hereby does grant to Goodyear a security interest in all such tires and equipment furnished by Goodyear to MTD, wherever located, whether now or hereafter acquired, and all proceeds and products thereof, to secure the repayment of all of MTD's indebtedness to Goodyear, whether now existing or hereafter arising, without regard to the form of such indebtedness, whether on open account, promissory note, or otherwise, and to secure the performance by MTD of its obligations to Goodyear pursuant to this Agreement. The security interests granted herein may include, but shall not be limited to, a purchase money security interest securing obligations incurred to purchase the tires or equipment from Goodyear, or any obligations substituted, therefore.

11. Possession & Cancellation

Should MTD breach the terms of this Agreement through non-payment, non-payment on total amount due at termination, impaired credit standing, assignment for the benefit of creditors, failure to report miles operated, application of Goodyear leased tires, spare stock inventory or receipt of tires, in accordance with Article 5, or erroneous reporting of miles run, or is placed in receivership or adjudicated bankrupt, then, under any of the above conditions, Goodyear shall have the right, at its option, without prejudice to any other rights and remedies, to stop shipping tires, take possession of inventory whether or not the inventory is applied on vehicles without being deemed guilty of trespass, and bill MTD for all costs of removing tires and/or terminate this Agreement in accordance with Article 4.

Should Goodyear exercise any of these options, Goodyear shall be relieved from any further obligation under this Agreement; however, this shall not relieve MTD from its obligation to pay for the use of the tires furnished or from its liability for all damages caused by such breach. MTD specifically agrees to be responsible for and pay any and all attorney fees, court costs and other expenses incurred by Goodyear in collecting amounts owed by MTD or in enforcing any other right under this Agreement.

Goodyear's failure to exercise any or all of the above options upon MTD's default shall not constitute a waiver by Goodyear of its right to exercise any or all of the above options upon any subsequent default by MTD.

12. Uniform Commercial Code Financing Statements

MTD specifically and expressly authorizes Goodyear to prepare, sign, and record or file such financing statements and/or other documents, or take any other action, it may deem necessary or prudent to perfect or protect its rights as owner of the furnished tires and equipment, and its security interests in the furnished tires and equipment, as set forth in this Agreement.

13. Access to Documents & Information

All access to documents and information hereunder will be reasonable access. MTD will use reasonable efforts to preserve the confidentiality of documents and information submitted hereunder to the extent permitted by applicable law.

14. Damage to Persons or Property

MTD will indemnify and hold Goodyear harmless against all claims, action or causes of action for damage or injury arising out of the use of or possession of any tires furnished, except for any claims, action, or causes of action arising solely out of a defect in material or workmanship of any tire manufactured and furnished by Goodyear under this Agreement. In no event shall Goodyear be liable to MTD for any incidental or consequential damages.

15. Contingencies

Goodyear shall be excused from deliveries or delay in deliveries if such failure to deliver or delay shall be caused by war, acts of terrorism, strikes, lockouts or other labor disturbances, fires, interruptions of transportation facilities, accidents, inability to obtain merchandise, shortage of energy source or raw material, or other similar causes beyond Goodyear's control. This Agreement is subject to applicable restrictions imposed by any Federal agency or by any other governmental authority.

16. Miscellaneous

The terms and provisions set forth in Exhibit D and Exhibit E are hereby incorporated in this Agreement by reference and made a part hereof. If any provision hereof is held to be illegal or invalid, the validity of the remaining portions of the Agreement shall not be affected and the rights and obligations of the parties shall be construed and enforced as if the Agreement did not contain the particular provision held to be illegal or invalid. The terms and conditions of this Agreement shall be construed under and governed by the laws of the State of Illinois without giving effect to the principles of conflict of laws thereof. Any action to enforce any of the terms and provisions of this Agreement shall be filed in state or federal court in Champaign County, Illinois.

17. Notices

Unless otherwise provided in this Agreement, any Notice legally required to be given by one party to another under the Contract shall be in writing, dated and signed by the party giving such Notice or by a duly authorized representative of such party. Notices shall not be effective unless transmitted by any method that provides confirmation of transmission and delivery, such as email with return receipt, fax, certified mail or registered mail and addressed to:

| If to MTD: | If to Goodyear: |
|---|---|
| Champaign-Urbana Mass Transit District ATTN: Managing Director & Director of Maintenance 1101 East University Avenue Urbana, Illinois 61802 FAX: 217.384.8215 | The Goodyear Tire & Rubber Company ATTN: Manager Business Operations 200 Innovation Way D/710 Akron, Ohio 44316-0001 |

Any party may change the address at which they are to receive notices hereunder by notice in writing in the foregoing manner given to the other party.

18. Entire Agreement

This Contract constitutes the complete and entire agreement between the Champaign-Urbana Mass Transit District and The Goodyear Tire & Rubbery Company and supersedes any prior representations, understandings, communications, commitments, agreements or Proposals, oral or written, that are not incorporated as a part of the Contract.

| Champaign-Urbana Mass Transit District | Goodyear Tire & Rubber Company |
|---|---|
| Signature of Authorized Official | Signature of Authorized Official |
| (Print or type name & title) | (Print or type name & title) |
| Date | Date |
| 37-0925614 | 34-0253240 |
| Tax ID Number | Tax ID Number |

Exhibit A
ILLINOIS DEPARTMENT OF TRANSPORTATION
STANDARD CLAUSES & PROVISIONS

A. Termination

- i. Termination for Convenience: The Champaign-Urbana Mass Transit District (MTD) may terminate this Contract, in whole or in part, at any time by written notice to the Contractor when it is in the Illinois Department of Transportation's best interest. The Contractor shall be paid its costs, including Contract close-out costs, and profit on work performed up to the time of termination. The Contractor shall promptly submit its termination claim to MTD to be paid to the Contractor. If the Contractor has any property in its possession belonging to MTD, the Contractor will account for the same, and return it or dispose of it in the manner the MTD directs.
- ii. Termination for Default: If the Contractor does not deliver supplies in accordance with the contract delivery schedule, or, if the Contract is for services, the Contractor fails to perform in the manner called for in the Contract, or if the Contractor fails to comply with any other provisions of the contract, MTD may terminate this contract for default. Termination shall be effected by serving a notice of termination on the Contractor setting forth the manner in which the Contractor is in default. The Contractor will only be paid the Contract price for supplies delivered and accepted, or services performed in accordance with the manner of performance set forth in the Contract. If it is later determined by MTD that the Contractor had an excusable reason for not performing, such as a strike, fire, or flood, events which are not the fault of or are beyond the control of the Contractor, MTD, after setting up a new delivery of performance schedule, may allow the Contractor to continue work, or treat the termination as a termination for convenience.

B. Financial assistance

This contract is subject to financial assistance contracts between MTD (and the United States Department of Transportation) and the Illinois Department of Transportation.

C. Interest of Members of Congress

No member of or delegate to the Illinois General Assembly (or the Congress of the United States) shall be admitted to any share or part of this contract or to any benefit arising therefrom.

D. Prohibited Interests

No member, or officer, or employee of MTD a local public body with financial interest or control in this contract during his tenure or for one year thereafter shall have any interest, direct or indirect, in this contract or the proceeds thereof.

E. Contract Changes

Any proposed change in this contract shall be submitted to the MTD for its prior approval and will only become effective once in writing and signed by both parties.

F. Audit and Inspection of Records

The contractor shall permit the authorized representatives of MTD and the State of Illinois to inspect and audit all data and records of the contractor relating to his performance under the contract.

G. Subcontracts

The contractor shall not enter into any sub-contracts or agreements or start any work by the work forces of the third party or use any materials from the stores, of the third party, with respect to this contract, without the prior concurrence of the Illinois Department of Transportation. All such subcontracts, agreements, and force work and materials shall be handled as prescribed for third-party contracts, agreements, and force-account work by the IDOT manual for Public Transportation Capital Improvement Grants. All requests for concurrence shall be submitted to the Champaign-Urbana Mass Transit District for approval prior to submittal to IDOT.

H. Assignment

Assignment of any portion of the work by subcontract must be approved in advance in writing by MTD.

I. Lobbying

MTD prohibits Contractors and subcontractors from hiring the then-serving Governor's family members to lobby procurement activities of the State, or any other unit of government in Illinois including local governments. This prohibition also applies to hiring for that same purpose any former State employee who had procurement authority at any time during the one-year period preceding the procurement lobbying activity.

The Contractor must sign the provided Lobbying Certification and require a certification from its subcontractors.

J. Retention of Records

The Contractor shall maintain records to show actual time devoted to the project and cost incurred.

K. Equal Employment Opportunity

In the event of the contractor's non-compliance with the provisions of this Equal Employment Opportunity Clause, the Illinois Human Rights Act or the Rules and Regulations of the Illinois Department of Human Rights ("Department"), the contractor may be declared ineligible for future contracts or subcontracts with the State of Illinois or any of its political subdivisions or municipal corporations, and the contract may be cancelled or voided in whole or in part, and such other sanctions or penalties may be imposed or remedies invoked as provided by statute or regulation. During the performance of this contract, the contractor agrees as follows:

(1) That it will not discriminate against any employee or applicant for employment because of race, color, religion, sex, marital status, national origin or ancestry, age, physical or mental handicap unrelated to ability, or an unfavorable discharge from military service; and further that it will examine all job classifications to determine if

minority persons or women are underutilized and will take appropriate affirmative action to rectify any such underutilization.

(2) That, if it hires additional employees in order to perform this contract or any portion thereof, it will determine the availability (in accordance with the Department's Rules and Regulations) of minorities and women in the area(s) from which it may reasonably recruit and it will hire for each job classification for which employees are hired in such a way that minorities and women are not underutilized.

(3) That, in all solicitations or advertisements for employees placed by it or on its behalf, it will state that all applicants will be afforded equal opportunity without discrimination because of race, color, religion, sex, marital status, national origin or ancestry, age, physical or mental handicap unrelated to ability, or an unfavorable discharge from military service.

(4) That it will send to each labor organization or representative of workers with which it has or is bound by a collective bargaining or other agreement or understanding, a notice advising such labor organization or representative of the contractor's obligations under the Illinois Human Rights Act and the Department's Rules and Regulations. If any such labor organization or representative fails or refuses to cooperate with the contractor in its efforts to comply with such Act and Rules and Regulations, the contractor will promptly so notify the Department and the contracting agency and will recruit employees from other resources when necessary to fulfill its obligations thereunder.

(5) That it will submit reports as required by the Department's Rules and Regulations, furnish all relevant information as may from time to time be requested by the Department or the contracting agency, and in all respects comply with the Illinois Human Rights act and the Department's Rules and Regulations.

(6) That it will permit access to all relevant books, records, accounts and work sites by personnel of the contracting agency and the Department for purposes of investigation to ascertain compliance with the Illinois Human Rights Act and the Department's Rules and Regulations.

(7) That it will include verbatim or by reference the provisions of this clause in every subcontract it awards under which any portion of the contract obligations are undertaken or assumed, so that such provisions will be binding upon such subcontractor. In the same manner as with other provisions of this contract, the contractor will be liable for compliance with the applicable provisions of this clause by such subcontractors; and further it will promptly notify the contracting agency and the Department in the event of any subcontractor fails or refuses to comply therewith. In addition, the contractor will not utilize any subcontractor declared by the Illinois Human Rights Commission to be ineligible for contracts or subcontracts with the State of Illinois or any of its political subdivisions or municipal corporations.

Exhibit B
SCHEDULE OF VEHICLES

| Rate Group | Number of Vehicles | Make of Vehicle | Model | Tire Size | Number of Wheels |
|-------------------|---------------------------|------------------------|-----------------|------------------|-------------------------|
| A | 19 | New Flyer | 60' Articulated | B305/70R22.5 | Ten (10) |
| | 99 | New Flyer | 40' Low-Floor | B305/70R22.5 | Six (6) |

Exhibit C
SCHEDULE OF VALUE

July 1, 2023 – June 30, 2029

Original Tread Tires

| Tire Size | Description | Billable Tread Depth | Billing Price per 32nd | Casing Value |
|------------------|--------------------|-----------------------------|--|---------------------|
| B305/70R22.5 | H MM G152 TL | 27 | \$22.07 | \$0.00 |
| B305/70R22.5 | L MM G652 RTB | 25 | \$22.07 | \$0.00 |

* or equivalent

Exhibit D
THE GOODYEAR TIRE & RUBBER COMPANY
STANDARD RIDER FOR MILEAGE CONTRACTS

The following rider contains standard terms and conditions that The Goodyear Tire & Rubber Company (Goodyear) requires in all mileage contracts and must be incorporated into the terms and provisions of the Contract that governs the relationship between Goodyear and the entity soliciting the bid (MTD). It is in addition to more specific revisions which may be necessary upon review of the bid package, and in the event of any conflict, the terms hereof shall prevail.

Notwithstanding anything to the contrary set forth in the Contract or bid specifications:

1. References in this Contract to Goodyear's compliance with laws, rules or regulations shall be deemed to refer to Goodyear's compliance with applicable laws, rules or regulations in connection with Goodyear's performance of this Contract, and nothing herein expands the scope of such laws, rules or regulations.
2. References to in this Contract to indemnifiable fees and expenses shall be deemed to refer to reasonable fees and expenses. Indemnification requirements set forth herein shall not include indemnification for MTD's own acts or omissions. Neither party will be liable for any special, exemplary, consequential, indirect, incidental, punitive or non-economic damages hereunder.
3. To the extent continued performance by MTD is subject to funding availability, MTD will promptly terminate in the event of funding unavailability and will, upon termination, pay for all unused mileage in the relevant tires, and take title to such tires, "as-is".
4. This Contract will be granted, and may be terminated, in whole and not in part.
5. Goodyear's obligations as to tax exemptions are subject to MTD providing Goodyear with proper exemption certificates.
6. If laws, changes in vehicles, governmental regulations or requirements or other causes beyond Goodyear's reasonable control, including additions or deletions made by MTD, require any change in applicable materials, performance or methods that reduce the mileage available from the tires covered by this Contract or that increase Goodyear's cost of performance under, or the time required for performance of, this Contract, MTD agrees that Goodyear shall be given reasonable prior written notice thereof (including in respect of any requirement not set forth herein) and that an equitable adjustment shall be made to the terms hereof, including, without limitation, the rates specified hereunder.
7. Any delivery of tires to original equipment manufacturers from which MTD purchases any new vehicles covered hereby shall be limited to deliveries in the United States and Canada.
8. Disclosures of documents or information hereunder are subject to Goodyear's standard confidentiality policy (attached).
9. The parties agree that, because this Contract is not a construction contract, the Davis-Bacon and Copeland Acts, and related rules and regulations, do not apply. Requirements relating to equal opportunity notices shall be deemed to be satisfied by notices substantially similar thereto and/or in compliance with applicable federal requirements.

10. Applicable requirements relating to transportation by sea or air shall apply where those methods of transportation or shipment are used by Goodyear for tires identified to this Contract.
11. The parties agree that the purpose of this Contract is not to finance the development of a product or information.
12. No termination will affect MTD's responsibility for obligations incurred hereunder
 - a. through the date of termination (including payment for services provided through the effective time of termination) or
 - b. of a nature that would survive termination.
13. Goodyear may, in connection with any services provided hereunder, use MTD's on-site punch clocks.
14. If any liquidated damages are payable hereunder,
 - a. Goodyear's performance and liability are subject to applicable force majeure, contingency or like limitations,
 - b. such damages will not be assessed after this Contract has been substantially completed,
 - c. such damages will be in lieu of actual damages and
 - d. such damages will not be assessed after procurement has been or should have been effected by MTD, procurement to be effected promptly by MTD.

The Goodyear Tire & Rubber Company Mileage Sales Confidentiality Policy (Referenced in Rider 8 Previous Page)

Confidential Information is information in Goodyear's possession that is not generally available to the public. Confidential Information may include, by way of example, without limitation, data, photographs, plans, reports, specifications and pricing information. The party receiving any such Confidential Information shall exercise care to prevent the disclosure of Confidential Information to any third party, using the same standards of care which it employs with its own confidential information of similar character. Said party shall limit internal dissemination of Confidential Information within its own organization to individuals whose duties justify the need to know such information, and then only provided there is a clear understanding by such individuals of their obligation to maintain the confidential status of such information and to restrict its use solely to the purpose specified herein. The party receiving such Confidential Information shall be under no obligation with respect to any Confidential Information: (a) which is, at the time of disclosure, available to the general public; or (b) which becomes at a later date available to the general public through no fault of the receiving party and then only after such date; or (c) which receiving party can demonstrate was in its possession before receipt; or (d) which is disclosed to receiving party without restriction on disclosure by a third party who has the lawful right to disclose such information. Information shall not be deemed to be available to the general public for the purposes of the above exceptions (i) merely because it is embraced by more general information in the prior possession of receiving party or of others, or (ii) merely because it is expressed in public literature in general terms not specifically in accordance with the Confidential Information. Goodyear does not disclose information subject to obligations of confidence to third parties, nor does it disclose privileged information, or, as to a contract, information not reasonably related thereto. Goodyear permits site access only upon reasonable notice, during normal business hours and subject to Goodyear's site access policies.

Exhibit E
USE OF NO VALUE TIRES OR SCRAP TIRES
FOR DISPOSING OR STORAGE OF BUSES

1. Goodyear will furnish "No-Value Tires" to MTD (upon availability basis) for the sole and exclusive purpose of equipping MTD's obsolete or out-of-service vehicles. It is understood that a "No-Value Tire" means any tire furnished under the Agreement which has been determined by Goodyear to be permanently unfit for further service under the Agreement. Each "No-Value Tire" furnished under this Agreement shall be listed on the document entitled **710-15 Mileage Tire Disposition** and shall reflect the tire as "**uncut-60**", under casing disposition. It is also understood that obsolete or out-of-service vehicle means any vehicle furnished with tires under the Agreement which has been determined by MTD to be unfit for further service under the Agreement and which will not, under any circumstances, be used on any public road or highway or on any public property of any kind and will not be used to transport any person.
2. In consideration of the accommodation and benefit given MTD, MTD agrees to use the "No-Value Tires" furnished for the sole and exclusive purpose of equipping MTD's obsolete or out-of-service vehicles and further agrees to ensure that such "No-Value Tires" are properly disposed of if and when they are removed from such obsolete or out-of-service vehicles.
 - a. MTD will acquire each "No-Value Tire" as is, and Goodyear makes no warranties as to the condition or fitness for continued use of such tire. MTD further agrees to assume all liability for use of, possession of, or disposal of any "No-Value Tires" furnished hereunder.
 - b. MTD agrees not to file or assert against Goodyear any claim, action or cause of action for loss, liability or damage arising out of MTD's use of, possession of, or disposal of "No-Value Tires" furnished under this Agreement.
 - c. MTD agrees to indemnify, defend and hold Goodyear harmless against all claims of any party for loss, liability or damage, including injury, resulting from Goodyear's furnishing of "No-Value Tires" to MTD hereunder, including any and all costs, legal fees, expenses and attorneys' fees resulting from such claims.
 - d. MTD agrees to dispose of each "No-Value Tire" in full compliance with applicable Federal, State and local laws, rules and regulations. MTD agrees to indemnify, save harmless and defend Goodyear from and against any and all liabilities, claims, penalties, forfeitures, suits and the costs and expenses incident thereto, (including costs of defense, settlement and reasonable attorneys' fees), which Goodyear may hereafter incur, become responsible for or pay out as a result of death or bodily injuries to any person, destruction or damage to any property, contamination of or adverse effects on the environment, or any violation of governmental laws, regulations or orders, caused, in whole or in part, by the disposal by MTD of "No-Value Tires" furnished to MTD hereunder.
 - e. Title and all other incidents of ownership to the "No-Value Tire" shall be transferred from Goodyear and vested in MTD at the time Goodyear delivers to MTD a copy of the **710-15 Mileage Tire Disposition** designating the tires as "**uncut-60**."

3. It is further agreed that Goodyear and MTD shall have the right, at their option, without prejudice to any other rights and remedies, to decline to further provide/utilize “No-Value Tires”.
4. Paragraph 2 of this Exhibit shall survive termination of this Agreement.